

ONE - VESSEL MK: V24

NOTE!
NOZZLE BOLT HOLES TO STRADDLE
NATURAL VESSEL CENTER LINES.

AS BUILT

REVISIONS
DATE 11-13-90
DATE 12-13-90

CH. ENG.	Q.C. MGR.	DATE	DESCRIPTION
JTC	JTC	12-13-90	MOVED NOZZ. H FROM 270° TO 90° ORIENT.
JTC	JTC	12-17-90	CHANGED S.F. FROM 2" TO 1 1/2"
JTC	JTC	12-18-90	MOVED NOZZ. B AND ADDED NOZZ. U
JTC	JTC	2-27-91	ADDED LUGS
JTC	JTC	2-27-91	AS BUILT ADDED NAME R BRKT.

BILL OF MATERIALS					
PCNO	QTY	DESCRIPTION	LENGTH	WEIGHT	
1	2	3/8" O.D. A.S.M.E. F4D MIN. THK. SA-240 304L SS			
		W/ 1/2 S.F. AND 1/4" LAND x 30° BEVEL O.D.		200	M/L
2	2	R 1/2" THK. 8'-0" x 9'-4 1/2" SA-240 304L SS	150"	1674	M/L
3	1	R 1/2" THK. 6'-7 1/2" x 9'-4 1/2" -DD-	143"	1684	M/L
4	1	R 1/2" THK. 3'-5 1/4" x 9'-4 1/2" -DD-	322"	359	M/L
5	1	R 1/2" THK. 2'-7 1/2" x 9'-4 1/2" -DD-	241"	268	M/L
6	2	R 1/2" THK. 2'-11 3/8" O.D. x 2'-4 1/2" I.D. -DD-	53"	59	M/L
7	4	1/2" 150# R.F. W.N. FLG. x 9" L4 SA-182 F 304L		53	M/L
8	2	3" 150# R.F. W.N. FLG. x 5ch 40 BORE -DD-		26	M/L
9	3	6" 150# R.F. W.N. FLG. x 5ch 40 BORE -DD-		84	M/L
10	3	10" 150# R.F. W.N. FLG. x 5ch 40 BORE -DD-		178	M/L
11	4	3/8" 150# R.F. W.N. FLG. x 5ch 40 BORE -DD-		211	M/L
12	1	1/2" 150# R.F. RED. FLG. -DD-		10	M/L
13	1	10" 150# R.F. RED. FLG. -DD-		74	M/L
14	1	10" 150# R.F. BLIND FLG. -DD-		74	M/L
15	1	PIPE 1 1/2" 145 W.T. x 3'-0" SA-312 TP 304L SS	3'	24	M/L
16	1	PIPE 3/4" 212 W.T. x 3'-0" -DD-	3'	24	M/L
17	1	PIPE 1/2" 200 W.T. x 4'-0" -DD-	4'	33	M/L
18	1	PIPE 10" 365 W.T. x 2'-0" -DD-	2'	89	M/L
19	1	3" 150# R.F. SPIRAL WOUND GRAPHITE FILLER 304 SS TAPE STYL. CG			M/L
20	2	10" 150# R.F. -DD-			M/L
21	2	3/8" 150# R.F. -DD-			M/L
22	24	1/2" x 5/16" CAP STDS SA-193 B72-3A-194-2H Nuts EX			M/L
23	4	3/8" x 1/4" -DD-			M/L
24	80	3/8" x 5/16" -DD-			M/L
25	1	1/2" 570 W.T. S.R. 90° ELL. SA-403 304L SS		20	M/L
26	1	1/2" 3000# S.R. 90° SOCKET WELD ELL. -DD-		2	M/L
27	1	R 1/2" THK. x 3'-0" I.D. x 4'-6" O.D. SA-240 304L SS	88"	191	M/L
28	1	R 1/2" THK. x 3'-0" I.D. x 3'-0" O.D. -DD-		96	M/L
29	8	R 1/2" THK. x 8" x 8" -DD-	39"	84	M/L
30	1	1/2" 150# R.F. SOCKET WELD FLG. SA-182 F 304L		3	M/L
31	4	R 1/2" THK. x 2" x 3" SA-240 304L SS			M/L
32	1	R 10GA x 8" x 1-1/2" T304 SS			M/L

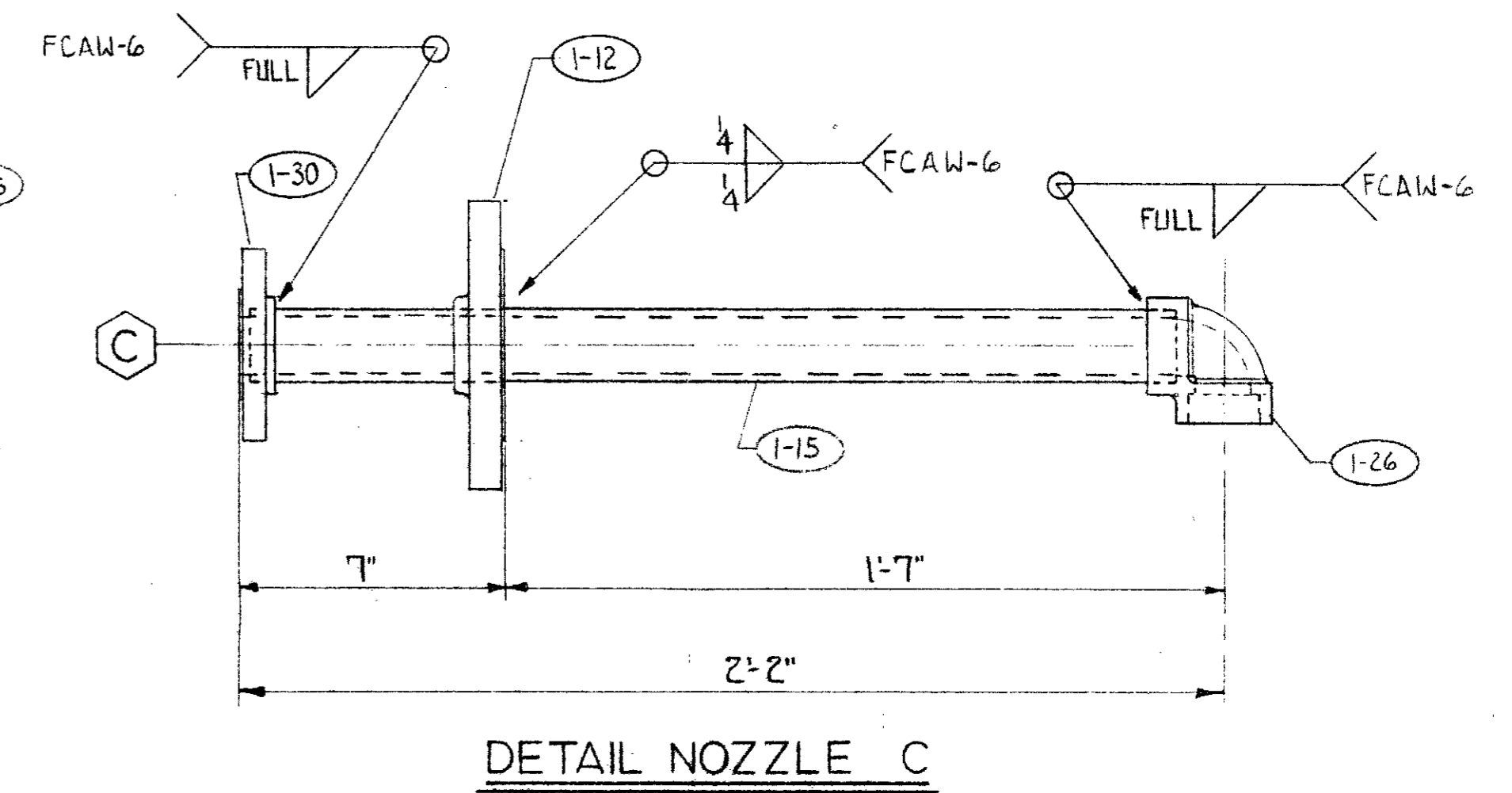
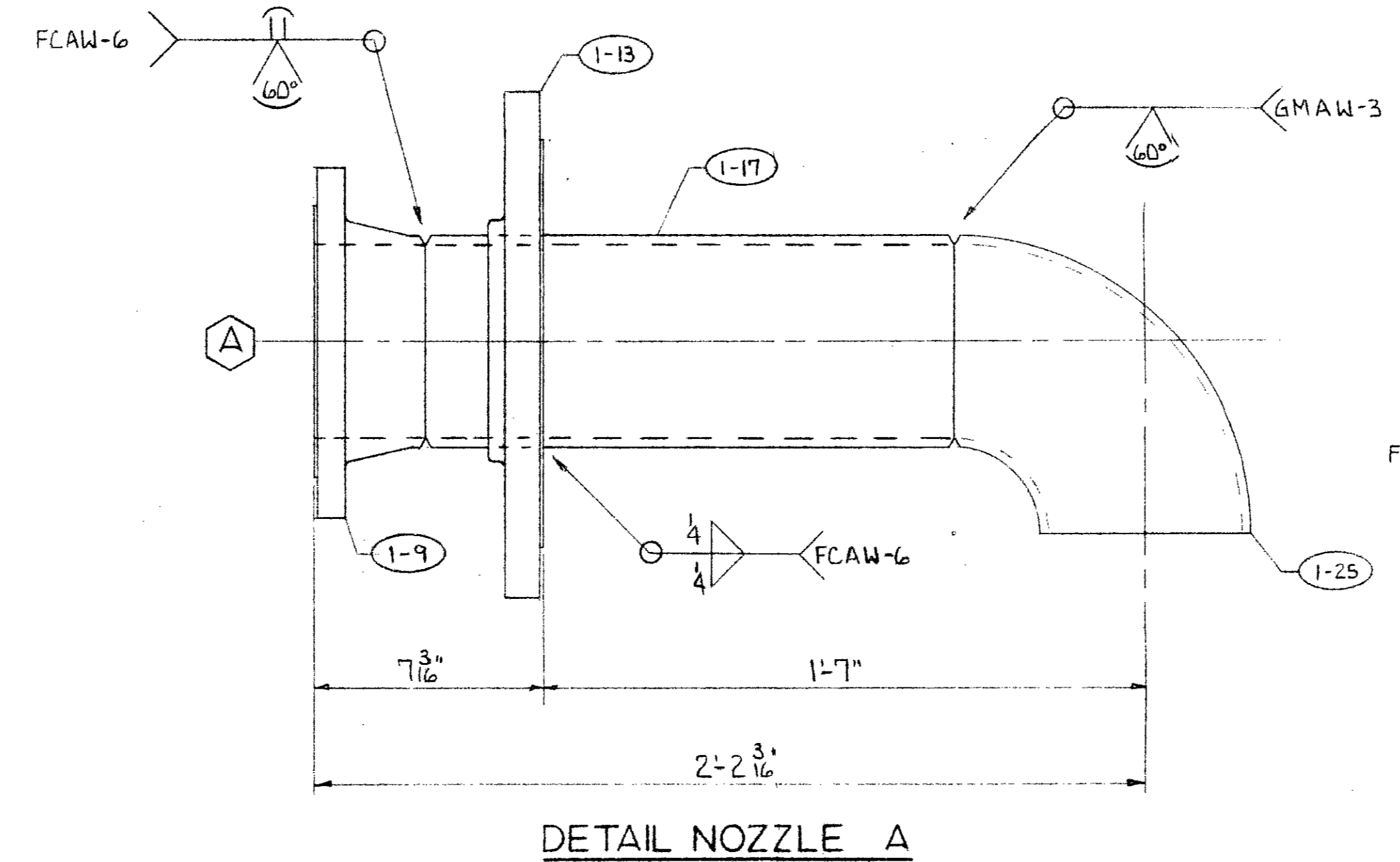
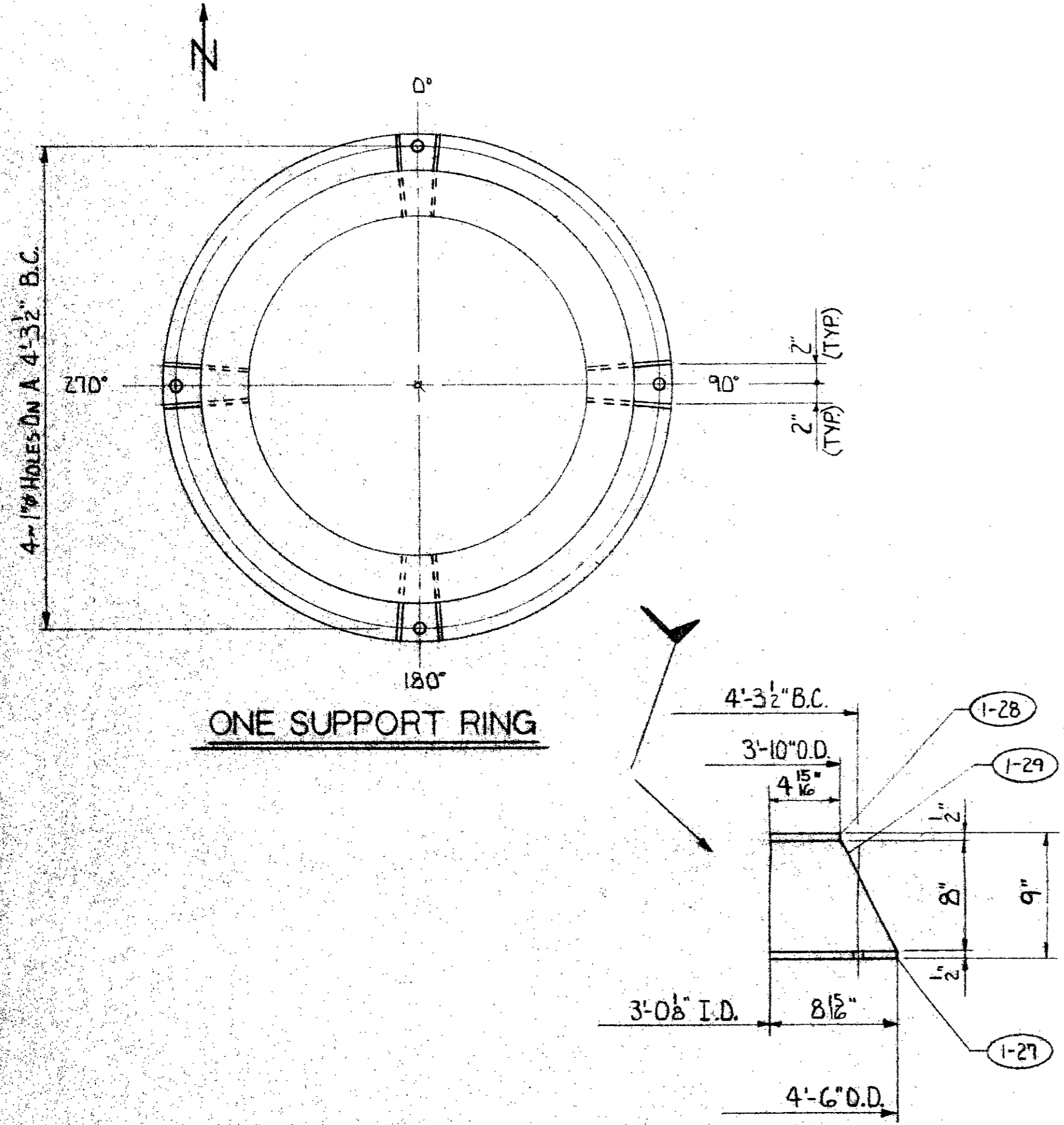
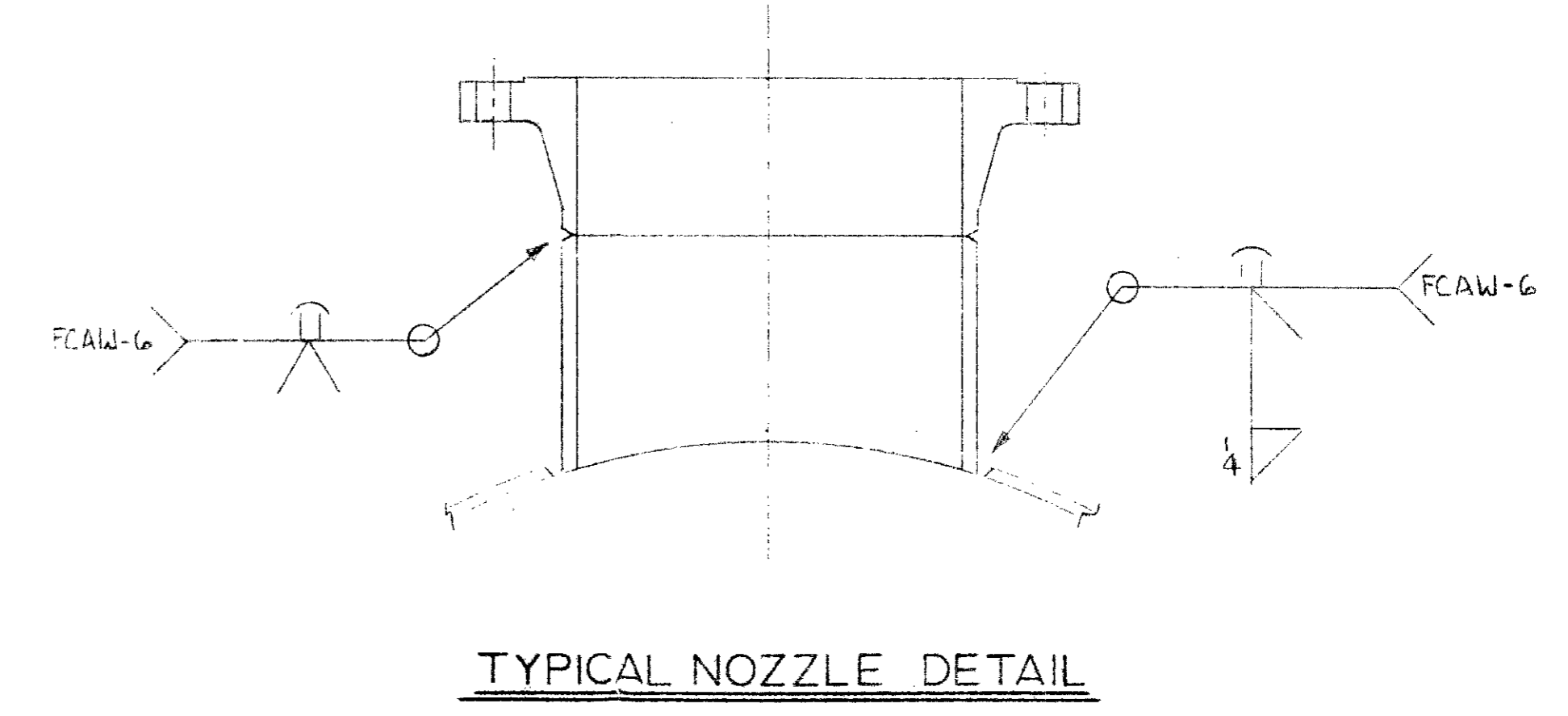
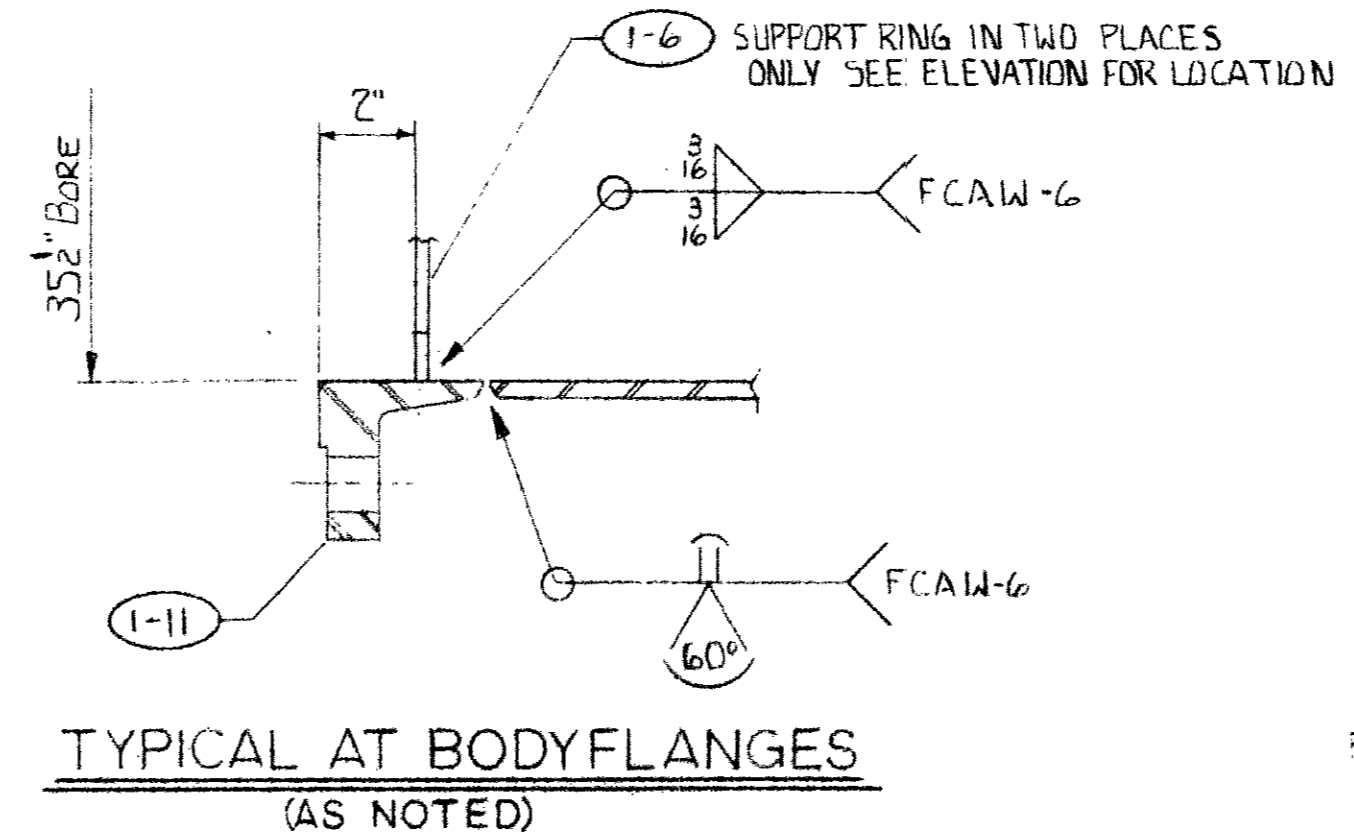
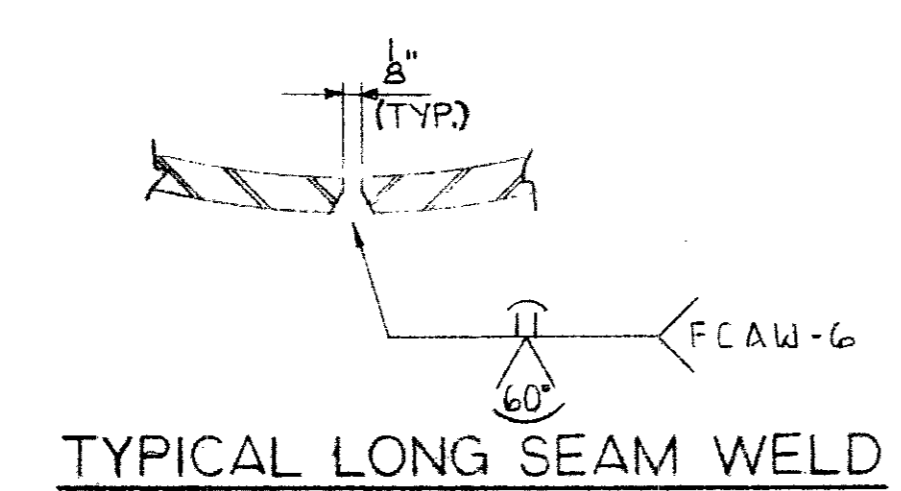
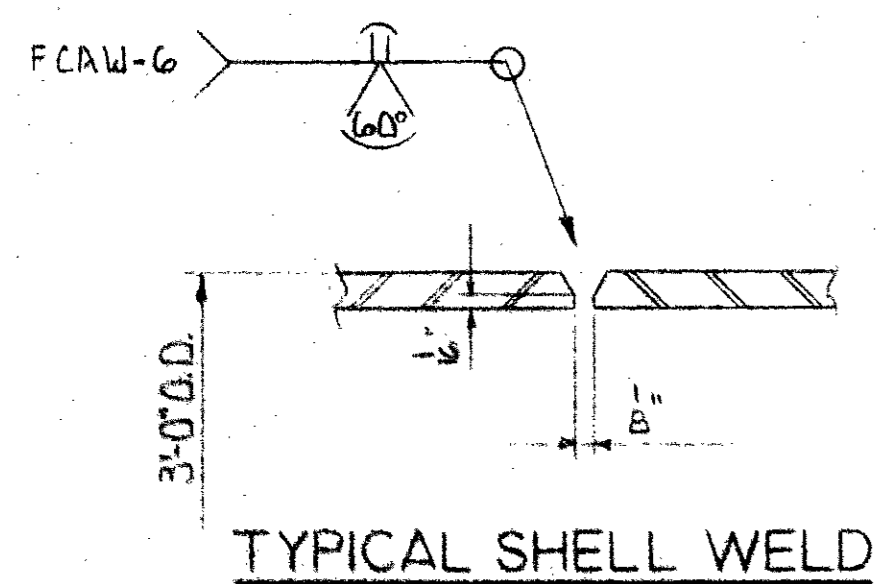
DESIGN CONDITIONS					
EDITION: 1989 ADDENDUM A-93					
A.S.M.E. CODE: SECTION VIII DIVISION 1					
M.A.W.P.: 75 PSIG AT 300° F					
M.D.M.T.: -20° F AT 75 PSIG					
EXTERNAL PRESSURE: NONE					
HYDROTEST PRESSURE: 138 PSI HORIZONTAL					
RADIOGRAPHY: SPOT (RT-3)					
P.W.H.T.: NONE					
CORROSION ALLOWANCE: NONE					

LETTER	QTY	SIZE	RTG	FACE	PROJECTION	SERVICE
U	1	3"	150#	R.F.W.N.	SEE ELE.	TEMPERATURE
T	1	1 1/2"	150#	R.F.W.N.	SEE ELE.	PRESSURE
P	1	1 1/2"				LEVEL
L2	1	1 1/2"				LEVEL
L1	1	1 1/2"				LEVEL
H	1	10"		R.F.W.N.		HANDHOLE/BLIND
G	1	8"				LIQUID OUT
F	1	10"				VAPOR IN
E	1	8"				VAPOR OUT
D	1	3"				REFLUX MOUNT
C	1	1 1/2"		R.F.S.W.		REFLUX IN
B	1	10"		R.F.W.N.		REFLUX MOUNT
A	1	6"		150#	R.F.W.N.	SEE ELE. FEED IN

SUPERIOR FABRICATORS, INC.					
BALDWIN, LA.					
DETAILS OF ELEVATION AND ORIENTATION					
FOR V24 VESSEL - AS BUILT					
LOCATION					
OWNER: GAYLORD CHEMICAL CORP.					
ARCHITECT					
CONTRACTOR					
DRAWN BY: A.D. CHECKED BY: DATE 11-29-90					
SHOP CODE: CUST. ORDER NO. JOB NO. DWG. NO. OF					
#99945					

BILL OF MATERIALS

PcNo	QTY	DESCRIPTION	LENGTH	WEIGHT



REVISIONS
12-13-90
12-13-90

CH. ENG.		Q.C. MGR.		DATE		DESCRIPTION	

UNLESS NOTED
HOLES
RIVETS
SHOP PAINT

SUPERIOR FABRICATORS, INC.
BALDWIN, LA.
DETAILS OF WELD, DETAILS SUPPORT RING AND NOZZLE DETAILS
FOR VZ4 VESSEL

LOCATION
OWNER: GAYLORD CHEMICAL CORP.
ARCHITECT
CONTRACTOR
DRAWN BY: A.D. CHECKED BY: DATE: 11-30-90

SHOP COM. CUST. ORDER NO. JOB NO. DWG. NO.
PO#000479-00 J90 209 2 2

99945