

1/8" F.P.T. FLUSHING CONNS
2 @ 90° APART

USE THIS NUMBER
81-211V
WHEN CORRESPONDING
OR ORDERING PARTS

4	10-28-73	GLR
3	8-28-73	WPC
2	12-28-73	WCL
1	5-10-73	WPC

This unit is the property of the Votator Division and shall not be reproduced, lent, or disposed of directly or indirectly for any purpose other than that for which it is specifically furnished except by written permission of the Votator Division.

VOTATOR DIVISION
LOUISVILLE, KENTUCKY
**CYLINDER ASSEMBLY
16" "R" MIXER**

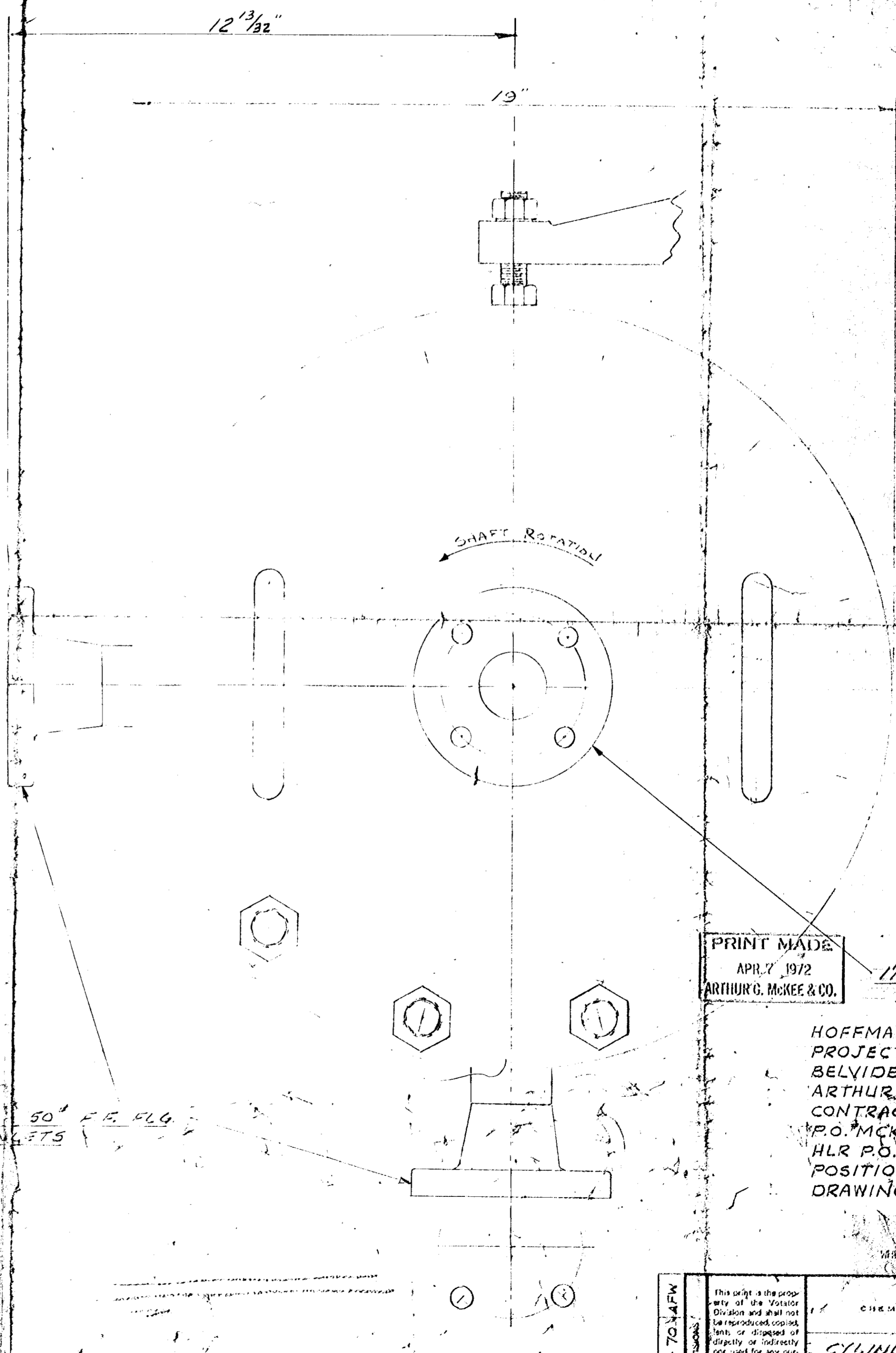
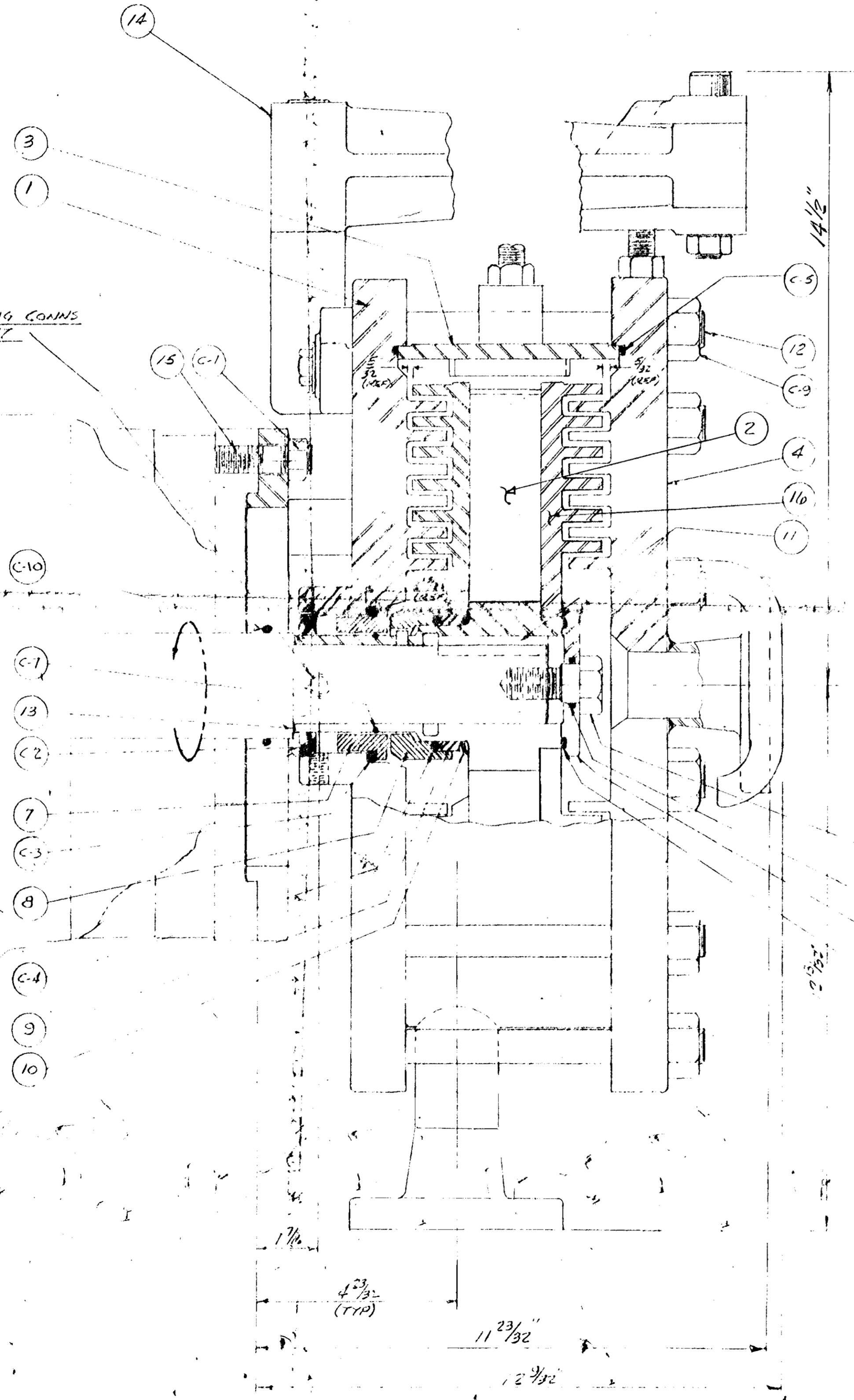
Scale: NAL	Checked By:
Date: 12-26-73	Approved By:
Drawn By: MP	App'd By:
Parts List: <input checked="" type="checkbox"/> R, P, List <input type="checkbox"/> Packing List <input type="checkbox"/>	

402158-G2

MXR-23016

242158-51

1/8" FPT. FLUSHING CONNS.
2 @ 90° APART



PRINT MADE
APR. 7, 1972
ARTHUR G. MCKEE & CO.

1 1/2" 150# F.F. FLG.
OUTLET

HOFFMAN-LA ROCHE
PROJECT 66
BELVIDERE, N.J.
ARTHUR G. MCKEE & CO.
CONTRACT 3726
P.O. MCK-3726-36
HLR P.O. 226549
POSITION - B3-3341
DRAWING 3341-2

B3-3341

RECEIVED
APR 13 1972
HLR Construction

111-2-704FW

This print is the property of the Votator Division and shall not be reproduced, copied, lent, or disposed of directly or indirectly for any purpose other than that for which it is specifically furnished except by written permission of the Votator Division.

VOTATOR DIVISION
CHEMURION CORPORATION
LOUISVILLE, KENTUCKY
CYLINDER ASSEMBLY
1 1/2" CR. M.I. 150#

Checked By	APR 13 1972
Drawn By	APR 13 1972
Part No.	402158-9