

- Notes:
- 1) FOR THE ORIENTATION OF COILS SEE VIEW (A.A)
  - 2) MAXIMUM HEIGHT OF COILS TO BE 10 FT. ABOVE TRAYS
  - 3) SEE ELEVATION FOR PIPE SIZES, TYPES & SERVICES TO COILS
  - 4) SEE VIEWS (B) THROUGH (Q) FOR COILS

DATE: 7/10/79  
 DRAWN BY: [Signature]  
 CHECKED BY: [Signature]

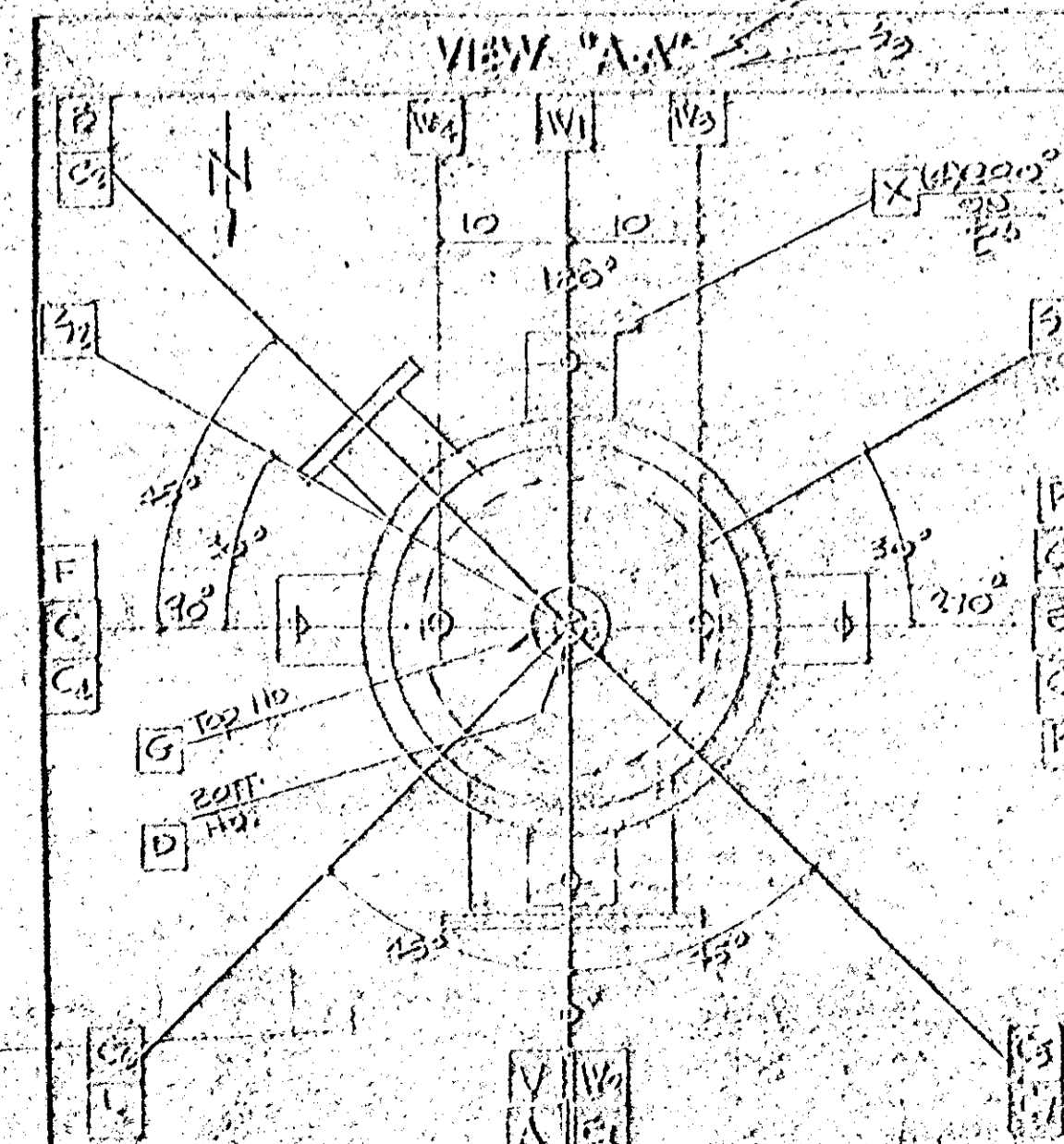
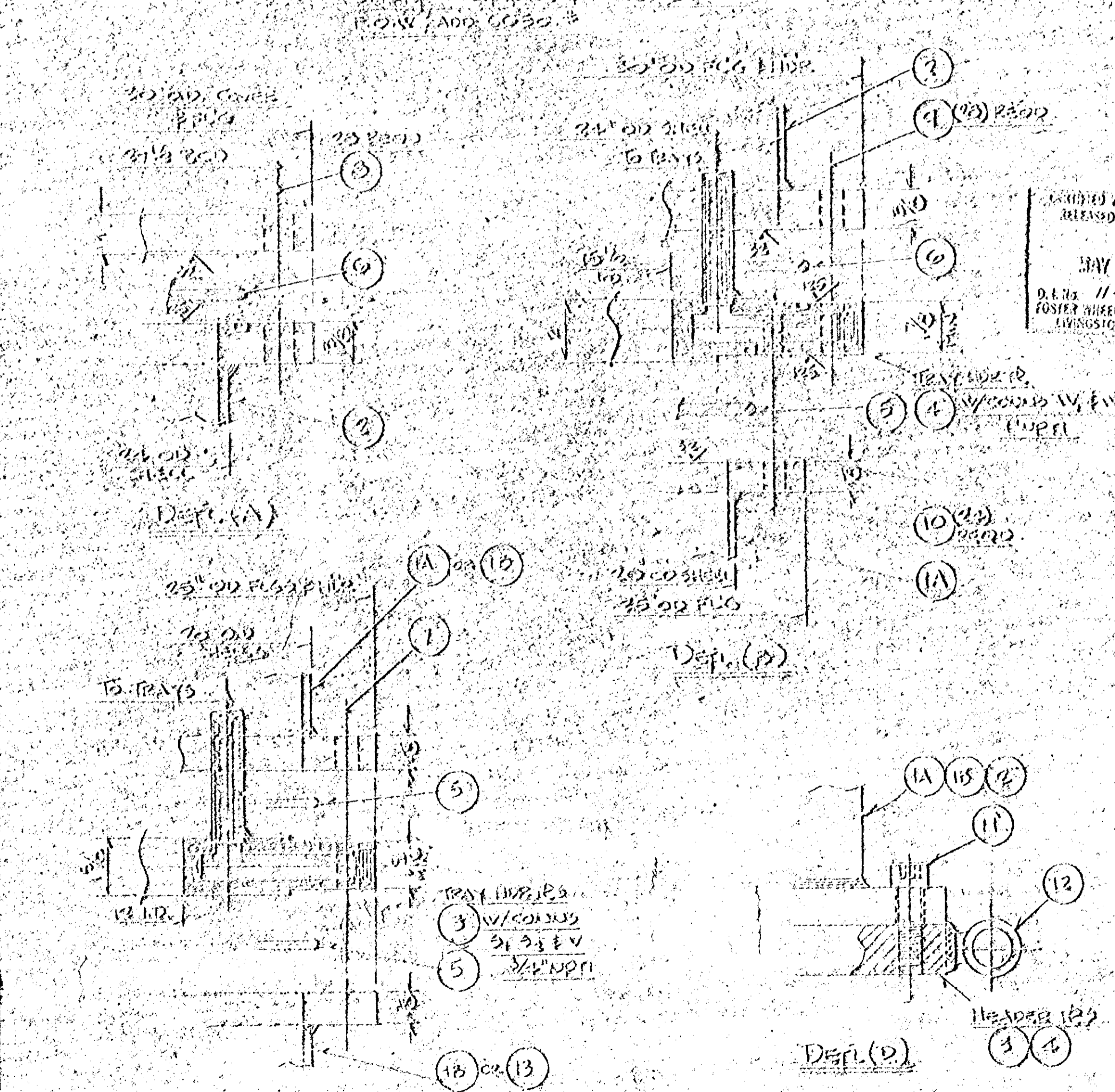
NOTE: CUSTOMER TO SUPPORT EXTERNAL PIPING TO VESSEL, SO AS TO PREVENT EXCESSIVE LOADING AT VESSEL NOZZLES.

U	MAXIMUM SHELL	1 1/2"	SA-516
U	TEMPERATURE	150°	SA-516
U	PRESSURE	100	SA-516
U	WINDING	1 1/2"	SA-516
U	HEAD	1 1/2"	SA-516
U	FRAMING	1 1/2"	SA-516
U	YEAR BUILT	1979	

ARTISAN INDUSTRIES INC., WALTHAM, MASS.  
 CODE NAMEPLATE

ITEM	QTY	MAFL	DESCRIPTION
1	1	1/2"	STAINLESS STEEL VESSEL
2	1	1/2"	STAINLESS STEEL VESSEL
3	1	1/2"	STAINLESS STEEL VESSEL
4	1	1/2"	STAINLESS STEEL VESSEL
5	1	1/2"	STAINLESS STEEL VESSEL
6	1	1/2"	STAINLESS STEEL VESSEL
7	1	1/2"	STAINLESS STEEL VESSEL
8	1	1/2"	STAINLESS STEEL VESSEL
9	1	1/2"	STAINLESS STEEL VESSEL
10	1	1/2"	STAINLESS STEEL VESSEL
11	1	1/2"	STAINLESS STEEL VESSEL
12	1	1/2"	STAINLESS STEEL VESSEL
13	1	1/2"	STAINLESS STEEL VESSEL
14	1	1/2"	STAINLESS STEEL VESSEL
15	1	1/2"	STAINLESS STEEL VESSEL
16	1	1/2"	STAINLESS STEEL VESSEL
17	1	1/2"	STAINLESS STEEL VESSEL
18	1	1/2"	STAINLESS STEEL VESSEL
19	1	1/2"	STAINLESS STEEL VESSEL
20	1	1/2"	STAINLESS STEEL VESSEL
21	1	1/2"	STAINLESS STEEL VESSEL
22	1	1/2"	STAINLESS STEEL VESSEL
23	1	1/2"	STAINLESS STEEL VESSEL
24	1	1/2"	STAINLESS STEEL VESSEL
25	1	1/2"	STAINLESS STEEL VESSEL
26	1	1/2"	STAINLESS STEEL VESSEL
27	1	1/2"	STAINLESS STEEL VESSEL
28	1	1/2"	STAINLESS STEEL VESSEL
29	1	1/2"	STAINLESS STEEL VESSEL
30	1	1/2"	STAINLESS STEEL VESSEL
31	1	1/2"	STAINLESS STEEL VESSEL
32	1	1/2"	STAINLESS STEEL VESSEL
33	1	1/2"	STAINLESS STEEL VESSEL
34	1	1/2"	STAINLESS STEEL VESSEL
35	1	1/2"	STAINLESS STEEL VESSEL
36	1	1/2"	STAINLESS STEEL VESSEL
37	1	1/2"	STAINLESS STEEL VESSEL
38	1	1/2"	STAINLESS STEEL VESSEL
39	1	1/2"	STAINLESS STEEL VESSEL
40	1	1/2"	STAINLESS STEEL VESSEL
41	1	1/2"	STAINLESS STEEL VESSEL
42	1	1/2"	STAINLESS STEEL VESSEL
43	1	1/2"	STAINLESS STEEL VESSEL
44	1	1/2"	STAINLESS STEEL VESSEL
45	1	1/2"	STAINLESS STEEL VESSEL
46	1	1/2"	STAINLESS STEEL VESSEL
47	1	1/2"	STAINLESS STEEL VESSEL
48	1	1/2"	STAINLESS STEEL VESSEL
49	1	1/2"	STAINLESS STEEL VESSEL
50	1	1/2"	STAINLESS STEEL VESSEL

ITEM	QTY	MAFL	DESCRIPTION	REMARKS
A	1	1/2"	STAINLESS STEEL VESSEL	
B	1	1/2"	STAINLESS STEEL VESSEL	
C	1	1/2"	STAINLESS STEEL VESSEL	
D	1	1/2"	STAINLESS STEEL VESSEL	
E	1	1/2"	STAINLESS STEEL VESSEL	
F	1	1/2"	STAINLESS STEEL VESSEL	
G	1	1/2"	STAINLESS STEEL VESSEL	
H	1	1/2"	STAINLESS STEEL VESSEL	
I	1	1/2"	STAINLESS STEEL VESSEL	
J	1	1/2"	STAINLESS STEEL VESSEL	
K	1	1/2"	STAINLESS STEEL VESSEL	
L	1	1/2"	STAINLESS STEEL VESSEL	
M	1	1/2"	STAINLESS STEEL VESSEL	
N	1	1/2"	STAINLESS STEEL VESSEL	
O	1	1/2"	STAINLESS STEEL VESSEL	
P	1	1/2"	STAINLESS STEEL VESSEL	
Q	1	1/2"	STAINLESS STEEL VESSEL	
R	1	1/2"	STAINLESS STEEL VESSEL	
S	1	1/2"	STAINLESS STEEL VESSEL	
T	1	1/2"	STAINLESS STEEL VESSEL	
U	1	1/2"	STAINLESS STEEL VESSEL	
V	1	1/2"	STAINLESS STEEL VESSEL	
W	1	1/2"	STAINLESS STEEL VESSEL	
X	1	1/2"	STAINLESS STEEL VESSEL	
Y	1	1/2"	STAINLESS STEEL VESSEL	
Z	1	1/2"	STAINLESS STEEL VESSEL	



GENERAL NOTES:

- 1) ALL VESSELS TO BE MADE W/ 304 SS
- 2) ALL TRAYS TO BE MADE W/ 304 SS
- 3) ALL COILS TO BE MADE W/ 304 SS

DESIGN: [Signature]  
 OPERATING: [Signature]  
 CONSTRUCTION: [Signature]  
 CORROSION ALLOWANCE: [Signature]  
 FINISH: [Signature]  
 HYDRO TEST: [Signature]  
 MATERIAL TEST REPORTS: [Signature]  
 INSPECTION & STAMPING: [Signature]

REMARKS:

POSITION NO. 13000  
 PROJECT NO. 13000  
 DRAWING NO. 13000  
 HIR CHARGE CODE C01  
 EQUIP. CODE NO. CME 100  
 HOFFMAN L. ROCHE, INC., BELVIDERE, N. J.

NO.	REVISION	DATE	BY	CHKD.
1				
2				
3				
4				
5				
6				
7				
8				
9				
10				
11				
12				
13				
14				
15				
16				
17				
18				
19				
20				
21				
22				
23				
24				
25				
26				
27				
28				
29				
30				
31				
32				
33				
34				
35				
36				
37				
38				
39				
40				
41				
42				
43				
44				
45				
46				
47				
48				
49				
50				

ARTISAN INDUSTRIES INC., WALTHAM, MASS.  
 ASSEMBLY  
 APPOINTED TO TRAY EVAPORATION, HOFFMAN L. ROCHE, INC., BELVIDERE, N. J.

DATE: 7/10/79  
 DRAWN BY: [Signature]  
 CHECKED BY: [Signature]

THIS DRAWING AND THE DESIGN ON DESIGNER'S CONCEPT THROUGH ARE THE EXCLUSIVE PROPERTY OF ARTISAN INDUSTRIES INC. IT MAY NOT BE REPRODUCED, COPIED, OR TRANSMITTED IN ANY FORM OR BY ANY MEANS, ELECTRONIC OR MECHANICAL, INCLUDING PHOTOCOPYING, RECORDING, OR BY ANY INFORMATION STORAGE AND RETRIEVAL SYSTEM, WITHOUT THE WRITTEN PERMISSION OF SAID ARTISAN INDUSTRIES INC.