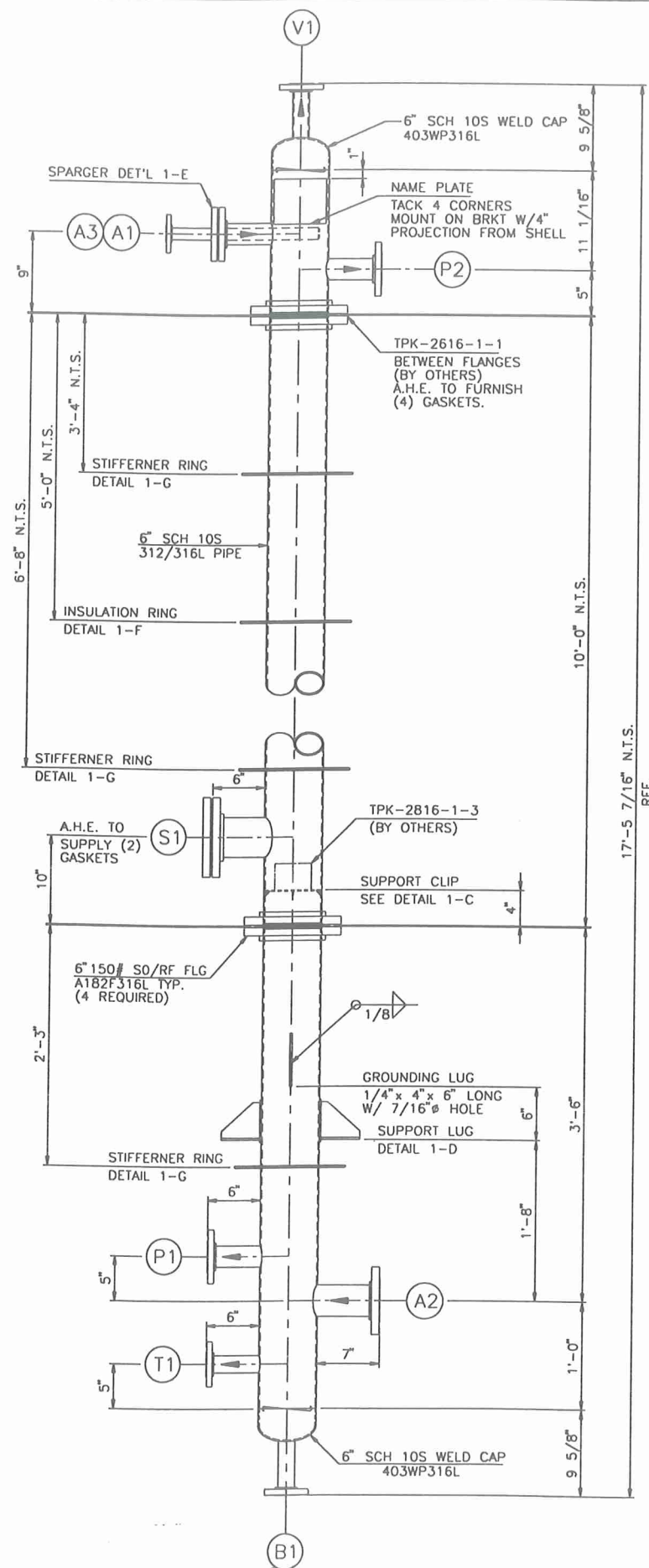
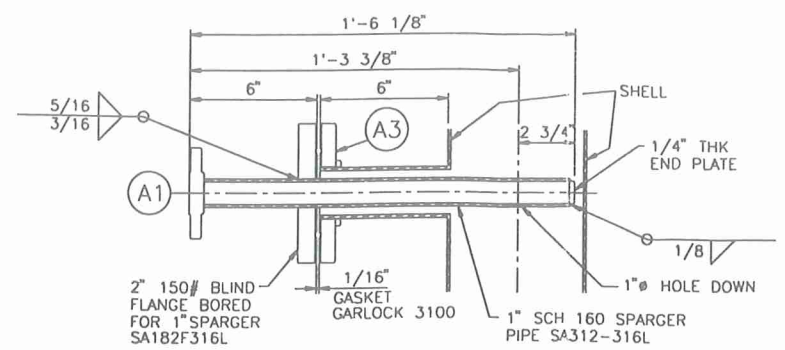


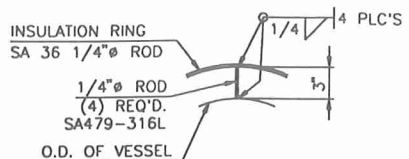
#99054



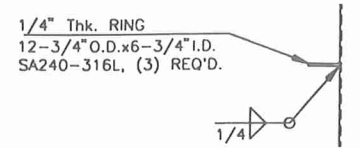
VESSEL SIDE ELEVATION



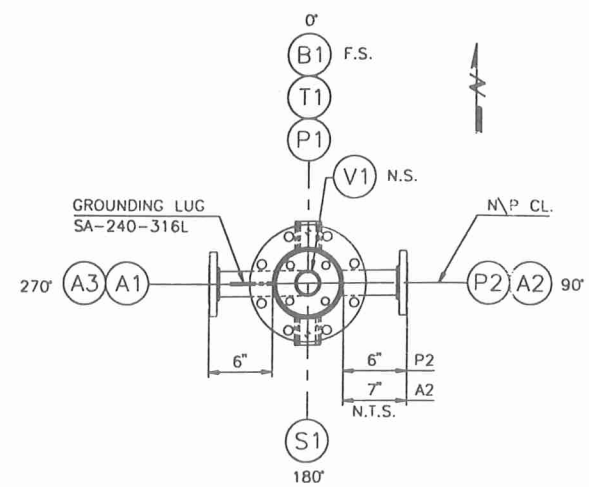
DETAIL 1-E REMOVABLE SPARGER



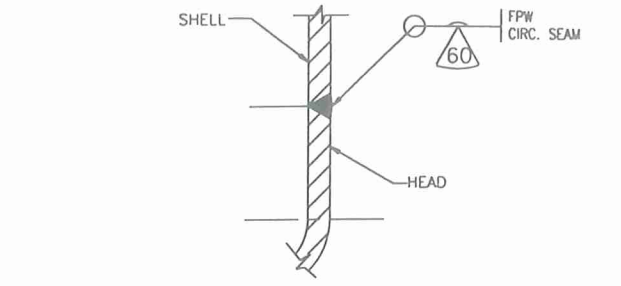
DETAIL 1-F INSULATION RING, (1) REQ'D.



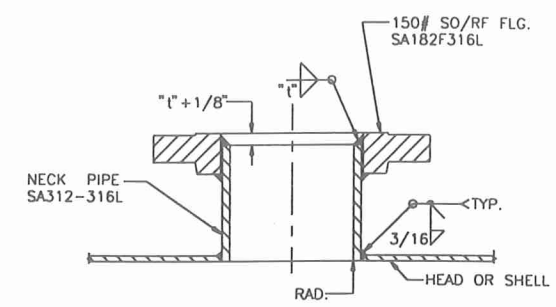
DETAIL 1-G STIFFENER RING, (3) REQ'D.



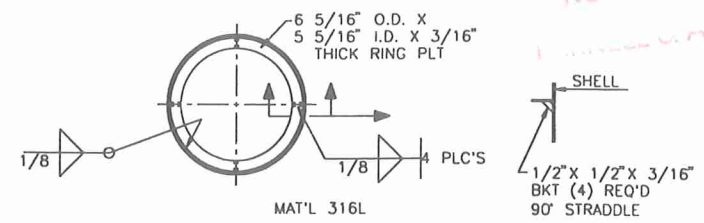
PLAN AT TOP



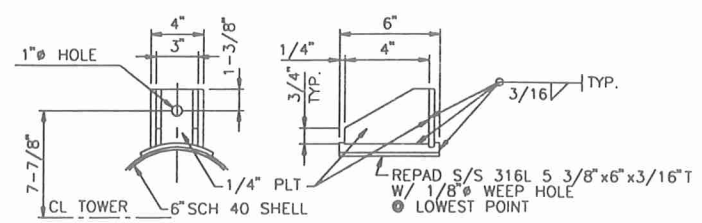
DETAIL 1-A HEAD TO SHELL WELD



DETAIL 1-B MISC. NOZZLES



DETAIL 1-C SUPPORT CLIP



MATERIAL: SA36 U.N.O.  
DETAIL 1-D SUPPORT LUG

NOZZLE SCHEDULE									
MARK	NOZZLE			FLANGE			SERVICE		
	SIZE	SCH	THK	PRES	TYPE	FACE	FIN.		
A1	1"	160	.250	150	SO	RF	STD	PROCESS LIQUID INLET	
A2	3"	40	.216	150	SO	RF	STD	PROCESS LIQUID / VAPOR INLET	
A3	2"	40	.154	150	SO	RF	STD	PROCESS VAPOR INLET	
B1	1 1/2"	40	.145	150	SO	RF	STD	PROCESS VAPOR OUTLET	
P1	2"	40	.154	150	SO	RF	STD	DIFFERENTIAL PRESSURE TRANSMITTER	
P2	2"	40	.154	150	SO	RF	STD	DIFFERENTIAL PRESSURE TRANSMITTER	
S1	4"	40	.237	150	SO	RF	STD	CLEAN OUT W/ BLD FLG.	
T1	1 1/2"	40	.145	150	SO	RF	STD	TEMPERATURE ELEMENT	
V1	2"	40	.154	150	SO	RF	STD	PROCESS VAPOR OUTLET	

- NOTES:
- VESSEL FABRICATED PER ASME SECT. VIII DIV. 1, 1992 ED.; 1994 ADDENDA.
  - ALL BOLT HOLES SHALL STRADDLE VESSEL MAJOR CENTERLINES.
  - ALL C/S WELDS PER AHE-100. ALL S/S WELDS PER AHE-800. ALL C/S TO S/S WELDS PER AHE-803.
  - SHOP HYDRO SHELL SIDE @ 75 PSI.

DESIGN DATA		
DESCRIPTION	INTERNAL - PSIG	EXTERNAL - PSIG
DESIGN PRESSURE	50	15
DESIGN TEMPERATURE	INTERNAL °F	EXTERNAL °F
	356 F	
MAWP	50/FV	
CORR. ALLOW.	.0625"	
HYDRO. PRESS. PSIG.	75	
WELD PROCEDURE	SEE NOTE 3	
RADIOGRAPHY PER CODE	SEE WELD DET'L.	
HEAT TREATMENT	NOT REQUIRED	

MATERIAL SPECIFICATIONS ASME	
DESCRIPTION	VESEL
SHELL	SA312TP316L
HEADS	SA403WP316L
SUPPORTS	SA36/SA516-70
FLANGES	SA182F316L
PIPE	SA312TP316L
TUBES	
TUBE SHEETS	
BOLTS/NUTS	SA193-BB/SA194-8
GASKETS	GARLOCK 3100 1/8" THK.
BODY FLG.	SA182F316L
W/FLG / TUBE SUPP.	

NAT'L. BD. No. 141

CERTIFIED BY ALABAMA HEAT EXCHANGERS, INC.

MAWP 50/FV PSIG @ 356 F

MDMT -20 °F @ 50/FV PSIG

MFG. SERIAL NO. AHE-385

YEAR BUILT 1996

EQUIPMENT NO. T-2816-1

I.D. NO. \_\_\_\_\_

WEIGHT: EMPTY 650 FULL 1000

ADDITIONAL N/P. DATA PER CUST. SPEC.		
MAWP 50/FV PSIG @ 356 F		
HYDRO TEST PR.: 75 PSIG		
CORR. ALLOW.: 0.0625"		
WATER PHASE STRIPPING COLUMN		
AHE JOB. No.: 3356B	CUST. PO No.: 08000155	
REVISIONS	ALABAMA HEAT EXCHANGERS, INC.	
1. REVISED & RESUBMIT PER CUSTOMER DWG. DATED 1/22/96 JMP 3/6/96	MOBILE, ALABAMA	
2. AS BUILT DATED 8/2/96 MLB 8/2/96	T-2816-1	
	WATER PHASE STRIPPING COLUMN HULS AMERICA	
CUST. ORDER NO. 08000155	JOB NO. 3356B	DRAWING NO. 3356B951
DRAWN BY EJA	DATE 9/18/95	SHT 1 OF 1
APPROV BY	DATE	SCALE: 1" = 1'-6"