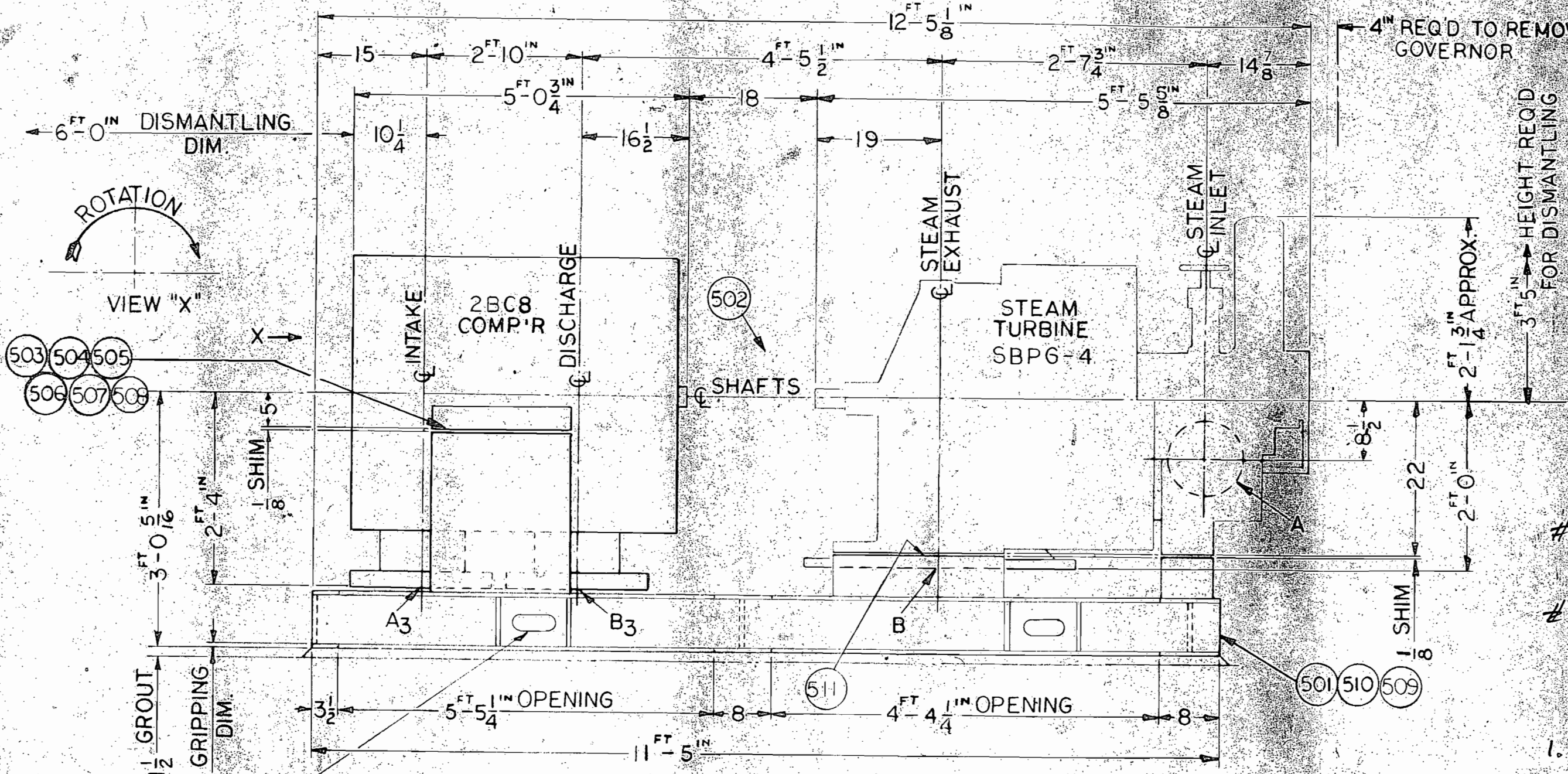


- NOTES: 1. FOR CUST. CONN. LETTER DESCRIPTION SEE DWG #451-157-601
 2. FOR FOUND'N & COMP'R FLG. LOADING SEE DWG #450-055-601
 3. APPROX. WEIGHTS 2BC8 COMP'R 12,200 LBS
 TURBINE 7,750 "
 BASE 1,000 "
 TOTAL 20,950 "
 4. HEAVIEST WEIGHT FOR MAINTANCE COMP'R ROTOR 2785 LBS
 5. ALL ENCLOSED ITEM NO'S ARE FOR CLARK BROS USE ONLY



94649
 # 946497
 1.1-166-1010

SHEET 1 OF 3
 OUTLINE, FOUNDATION
 & CONNECTIONS

| REV. NO. 4 | | REV. NO. 3 | | REV. NO. 2 | | REV. NO. 1 | | CLARK BROS. CO. | |
|---|-------------|--|--------------|-------------------------------|-------------|--|-------------|---------------------------------|--|
| DRAWN | PDV 2-11-67 | DRAWN | JAM 10-22-66 | DRAWN | Z.D. 8/6/66 | DRAWN | CRB 9/27/66 | DIV. OF DRESSER INDUSTRIES INC. | |
| DRAWING CHK | JLF 2-10-67 | DRAWING CHK | HFG 10/26/66 | DRAWING CHK | DEW 8/8/66 | DRAWING CHK | MTZ 9/30/66 | OLEAN, N.Y. USA | |
| DESIGN CHK | OF | DESIGN CHK. | | DESIGN CHK. | MTZ 8/10/66 | DESIGN CHK. | MTZ 9/30/66 | SCALE | |
| APPROVED | OF | APPROVED | | APPROVED | | APPROVED | LAN | BILL OF MATL | |
| ADDED CUST. CONNS. AM3, AN3, AR3, AQ3, AT3 BO3, BP3, BN3, & BH3 | | ADDED (TR) 508, 509 & 511. ADDED CONNS. C AS, AT3, BH3 RELOCATED | | REDRAWN & ADDED SHEET No 3 | | REVISED CONN. LETTERS FOR COMP'R & TURBINE | | | |