

UNIT 1.2

1.2-16-2018
1.2-16-2019
1.2-84-3010

FLUOR DANIELS WILLIAMS BROS.
FOR PHILLIPS PUERTO RICO CORE
AROMAX REVAMP PROJECT, NO. 82600
ITEM NO. 1.2-16-2018/2019
P.O. NO. 8260-101
D-R CT. 21,747A

NOTICE
THIS DOCUMENT CONTAINS CONFIDENTIAL AND TRADE SECRET
INFORMATION AND IS THE PROPERTY OF DRESSER-RAND COMPANY
AND IS PROVIDED TO THE RECEIVER IN CONFIDENCE

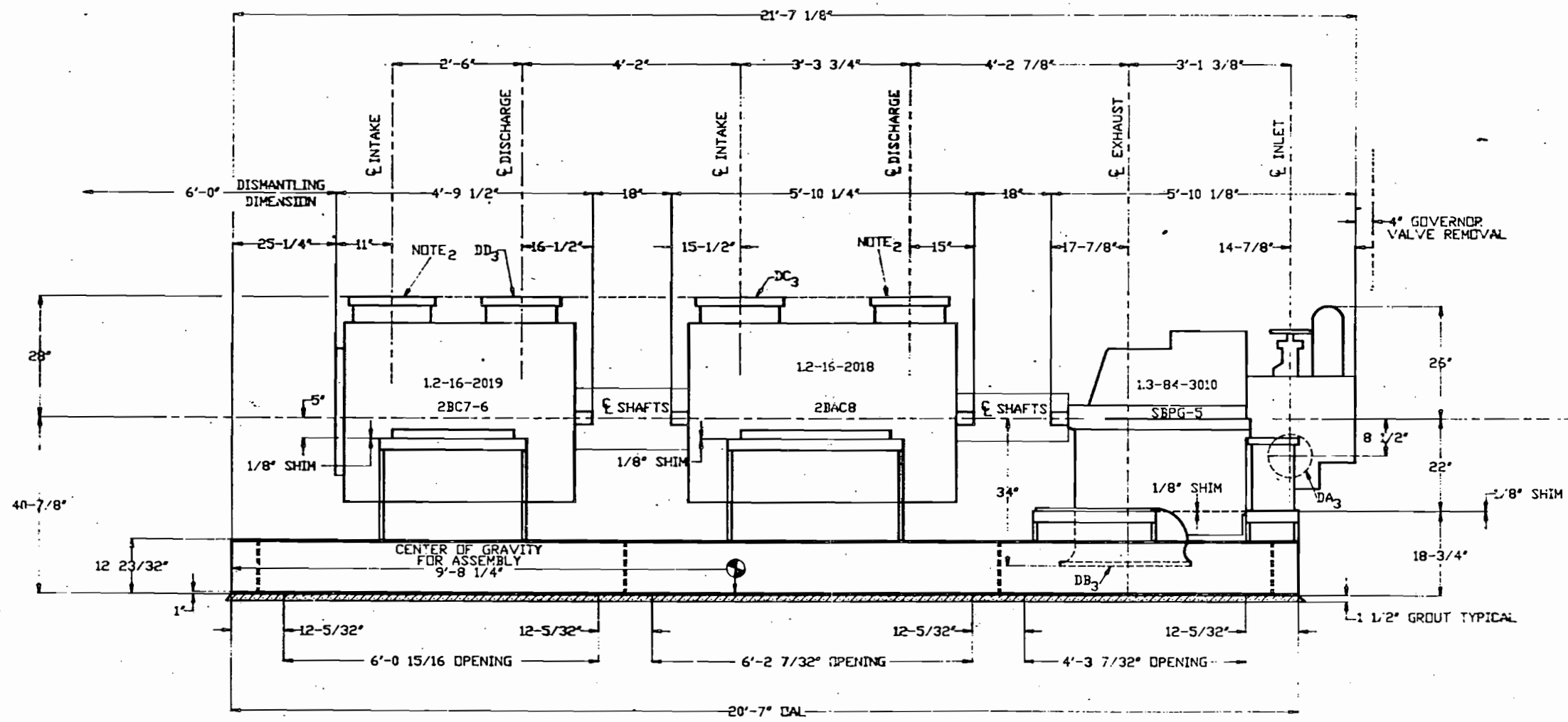
- NOTES: 1. FOR CUSTOMER CONNECTION LETTER DESCRIPTION SEE DWG. NO. 479-331-601
2. INTERCONNECTING PIPING BETWEEN 29AC8 DISCHARGE AND 28C7-6 INTAKE SUPPLIED BY DRESSER-RAND REF. PART NO. 479-994-201
3. FOR ADDITIONAL SBPG-5 TURBINE CUSTOMER CONNECTIONS REFER TO ELLIOTT DWG. NO. R-608223

4. APPROXIMATE WEIGHTS:	BASEPLATE	15,500 LBS.
	DRESSER-RAND 28C7-6 COMPRESSOR	16,740 LBS.
	DRESSER-RAND 28AC-8 COMPRESSOR	19,300 LBS.
	ELLIOTT SBPG-5 TURBINE	8,750 LBS.
	AUXILIARY ITEMS	3,030 LBS.

APPROXIMATE TOTAL WEIGHT 63,400 LBS.

5. HEAVIEST WEIGHTS FOR MAINTENANCE:	DRESSER-RAND 28C7-6 BUNDLE	4,000 LBS.
	DRESSER-RAND 28AC-8 BUNDLE	4,500 LBS.
	ELLIOTT SBPG TURBINE UPPER HALF	3,350 LBS.

ISSUED
DEC 15 1993



#94646
#94647
#94648

CERTIFIED - ISSUED FOR CONSTRUCTION

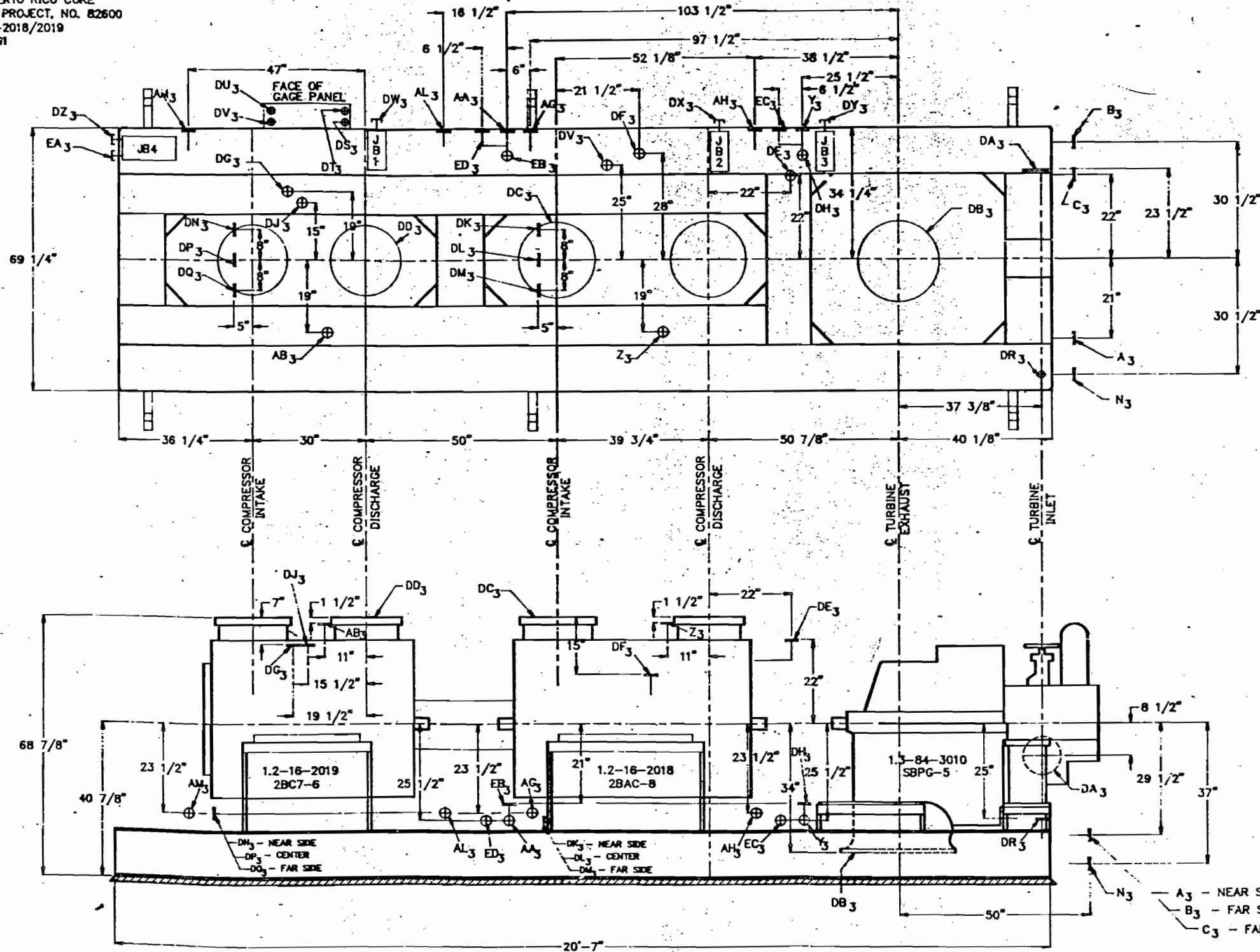
REFERENCE	DATE	BY

CONTRACT NO. 21,747A	BY DATE	OUTLINE, FOUNDATION, & CONNECTION
TYPE 28	VR 12/04/93	DRESSER-RAND TURBO PRODUCTS DIVISION CLEAN, N.Y. USA
SCALE NTS	CHECKED DK 12/04/93	
MANUFACTURED BY	DRESSER-RAND	SHT. REV.
PRODUCT SUPPORT DIVISION HOUSTON, TX, USA	479-478	1 of 3 0

C B A

FLUOR DANIELS WILLIAMS BROS.
FOR PHILLIPS PUERTO RICO CORE
AROMAX REVAMP PROJECT, NO. 82600
ITEM NO. 1.2-16-2018/2019
P.O. NO. 8260-101
D-R CT. 21,747A

THIS DOCUMENT CONTAINS CONFIDENTIAL AND TRADE SECRET INFORMATION AND IS THE PROPERTY OF DRESSER-RAND COMPANY AND IS PROVIDED TO THE RECIPIENT IN CONFIDENCE.



CONNECTION	DESCRIPTION	SIZE & RATING
A3	SUPPLY - LUBE OIL	1"-150# ANS RF FLD.
B3	SUPPLY - SEAL OIL 2BAC8 COMPRESSOR	1-1/2"-300# ANS RF FLD.
C3	SUPPLY - SEAL OIL 2BC7-6 COMPRESSOR	1-1/2"-300# ANS RF FLD.
D3	DRAIN - LUBE OIL	1"-150# ANS RF FLD.
E3	SUPPLY - SEAL OIL FROM OVERHEAD TANK-2BAC8	1"-300# ANS RF FLD.
F3	SEAL REFERENCE PRESS. TO OVERHEAD TANK-2BAC8	1-1/2"-300# ANS RF FLD.
G3	SUPPLY - SEAL OIL FROM OVERHEAD TANK-2BC7-6	1"-300# ANS RF FLD.
H3	SEAL REFERENCE PRESS. TO OVERHEAD TANK-2BC7-6	1-1/2"-300# ANS RF FLD.
I3	DRAIN-SEAL OIL TO TRAP-2BAC8 DISCHARGE	1"-300# ANS RF FLD.
J3	DRAIN-SEAL OIL TO TRAP-2BAC8 INTAKE	1"-300# ANS RF FLD.
K3	DRAIN-SEAL OIL TO TRAP-2BC7-6 DISCHARGE	1"-300# ANS RF FLD.
L3	DRAIN-SEAL OIL TO TRAP-2BC7-6 INTAKE	1"-300# ANS RF FLD.
M3	SBPG-5 TURBINE INLET	4"-800# ANS RF FLD.
N3	SBPG-5 TURBINE EXHAUST	30"-125# ANS RF FLD.
O3	2BAC8 COMPRESSOR INLET	10"-800# ANS RF FLD.
P3	2BC7-6 COMPRESSOR DISCHARGE	10"-800# ANS RF FLD.
Q3	2BAC8 INLET CONNECTOR	1-1/2"-300# ANS RF FLD.
R3	BEARING ATMOSPHERIC VENT-2BAC8	3/4"-150# ANS RF FLD.
S3	BEARING ATMOSPHERIC VENT-2BC7-6	3/4"-150# ANS RF FLD.
T3	SEAL OIL PRESSURE TO CUSTOMER PRESSURE DIFFERENTIAL 2BL-2BAC8	3/4"-150# ANS RF FLD.
U3	SEAL VENT TO ATMOSPHERE-2BC7-6	3/4"-150# ANS RF FLD.
V3	CASING 2BAC8	1"-800# ANS RF FLD.
W3	CASING 2BC7-6	1"-800# ANS RF FLD.
X3	CASING 2BC7-6	1"-800# ANS RF FLD.
Y3	CASING 2BC7-6	1"-800# ANS RF FLD.
Z3	CASING 2BC7-6	1"-800# ANS RF FLD.
AA3	LUBE OIL SUPPLY PRESSURE	3/4"-150# ANS RF FLD.
AB3	CONDUIT CONNECTION HIGH DISCHARGE TEMPERATURE ALARM SWITCH-2BAC8	3/4" NPT FEMALE
AC3	CONDUIT CONNECTION HIGH DISCHARGE TEMPERATURE SHUTDOWN SWITCH-2BAC8	3/4" NPT FEMALE
AD3	CONDUIT CONNECTION HIGH DISCHARGE TEMPERATURE ALARM SWITCH-2BC7-6 (CUSTOMER SUPPLY)	3/4" NPT FEMALE
AE3	CONDUIT CONNECTION HIGH DISCHARGE TEMPERATURE SHUTDOWN SWITCH-2BC7-6 (CUSTOMER SUPPLY)	3/4" NPT FEMALE
AF3	CONDUIT CONNECTION - FROM POWER SUPPLY TO PROTECTORS - JB1	1-1/2" NPT FEMALE
AG3	CONDUIT CONNECTION - FROM POWER SUPPLY TO PROTECTORS - JB2	1-1/2" NPT FEMALE
AH3	CONDUIT CONNECTION - FROM POWER SUPPLY TO PROTECTORS - JB3	1-1/2" NPT FEMALE
AI3	CONDUIT CONNECTION - FROM POWER SUPPLY TO RTD TERMINAL STRIP - JB4	1-1/2" NPT FEMALE
AJ3	CONDUIT CONNECTION - SPARE TO RTD TERMINAL STRIP - JB4	1-1/2" NPT FEMALE
AK3	SEAL OIL PRESSURE TO CUSTOMER PRESSURE DIFFERENTIAL 2BL-2BC7-6	3/4"-300# ANS RF FLD.
AL3	SEAL OIL SUPPLY PRESSURE-2BAC8 TO LOCAL GAGE PANEL	3/4"-300# ANS RF FLD.
AM3	SEAL OIL SUPPLY PRESSURE-2BC7-6 TO LOCAL GAGE PANEL	3/4"-300# ANS RF FLD.

94646
94647
94648

FOR ADDITIONAL ELLIOTT SBPG-5 TURBINE CONNECTIONS, SEE ELLIOTT DWG. R-608223

ISSUED
DEC 15 1993

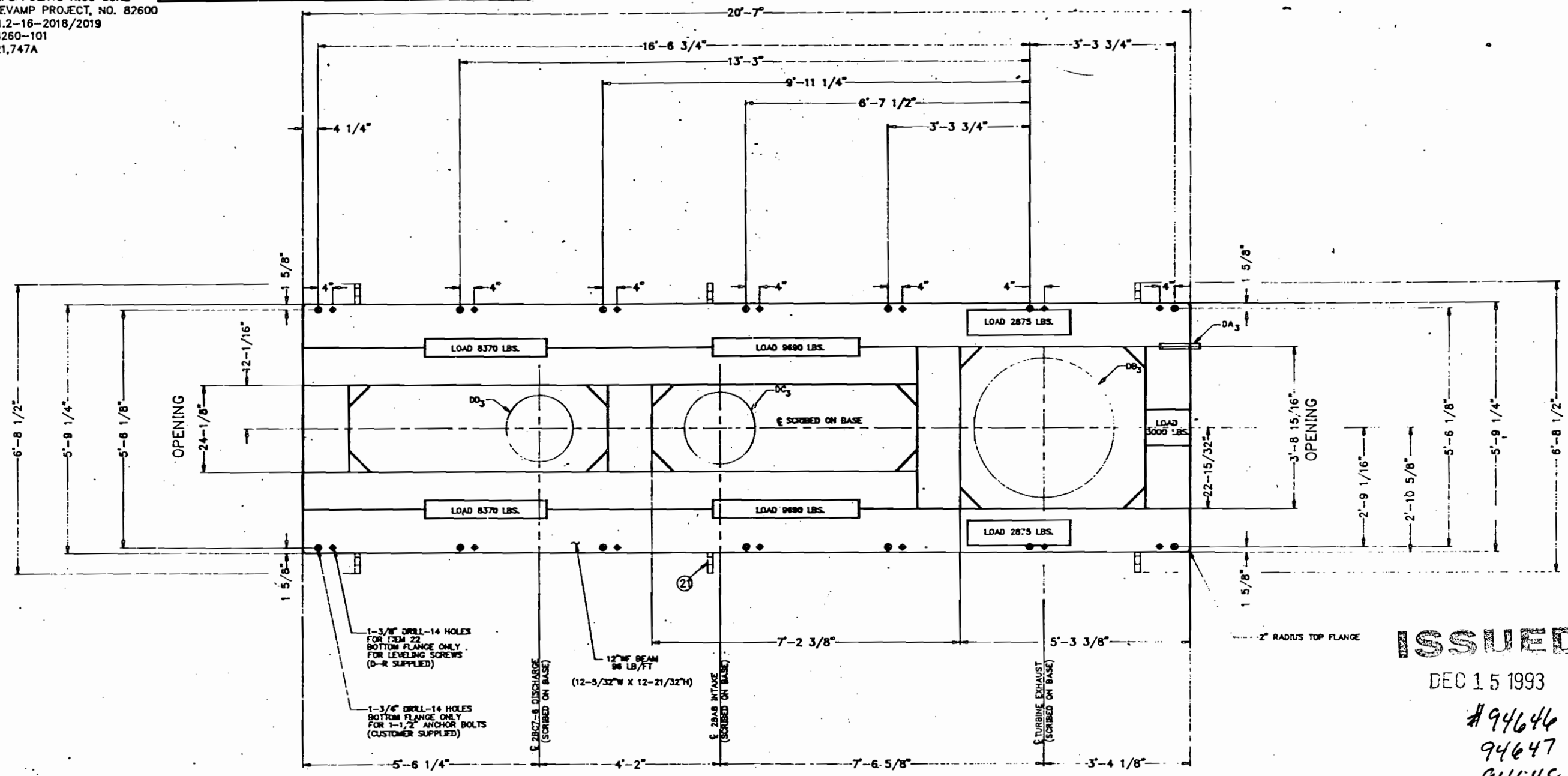
CERTIFIED - ISSUED FOR CONSTRUCTION

REFERENCE	DATE	BY

CONTRACT NO.	21,747A	BY	DATE	OUTLINE, FOUNDATION, & CONNECTION
TYPE	3B	DRAWN	12/04/93	DRESSER-RAND TURBINE PRODUCTS DIVISION GLENN, N.Y. USA
SCALE	NES	CHECKED	12/04/93	
MANUFACTURED BY				SHT. REV. 3 of 3 0
DRESSER-RAND PRODUCT SUPPORT DIVISION HOUSTON, TX USA				

FLUOR DANIELS WILLIAMS BROS.
 FOR PHILLIPS PUERTO RICO CORE
 AROMAX REVAMP PROJECT, NO. 82600
 ITEM NO. 1.2-16-2018/2019
 P.O. NO. 8260-101
 D-R CT. 21,747A

NOTICE
 THIS DOCUMENT CONTAINS CONFIDENTIAL AND TRADE SECRET
 INFORMATION AND IS THE PROPERTY OF DRESSER-RAND COMPANY
 AND IS PROVIDED TO THE RECEIVER IN CONFIDENCE.



ISSUED

DEC 15 1993

#94646
 94647
 94648

CERTIFIED - ISSUED FOR CONSTRUCTION

REFERENCE	CONTRACT NO. 21,747A	BY DATE	OUTLINE, FOUNDATION, AND CONNECTION
ALTERNATIONS	TYPE 2B	VR 12/04/93	DRESSER-RAND
SCALE NTS	CHECKED DK	12/04/93	TURBO PRODUCTS DIVISION
MANUFACTURED BY	DRESSER-RAND	HOUSTON, TX, USA	CLEAN, N.Y. USA
PRODUCT SUPPORT DIVISION	479-478	SHT. 2	REV. 0

FLOUR DANIELS WILLIAMS BROS.
 FOR PHILLIPS PUERTO RICO CORE
 AROMAX REVAMP PROJECT, NO. 82600
 ITEM NO. 1.2-16-2018/2019
 P.O. NO. 8260-101
 D-R CT. 21,747A

CERTIFIED - AS BUILT

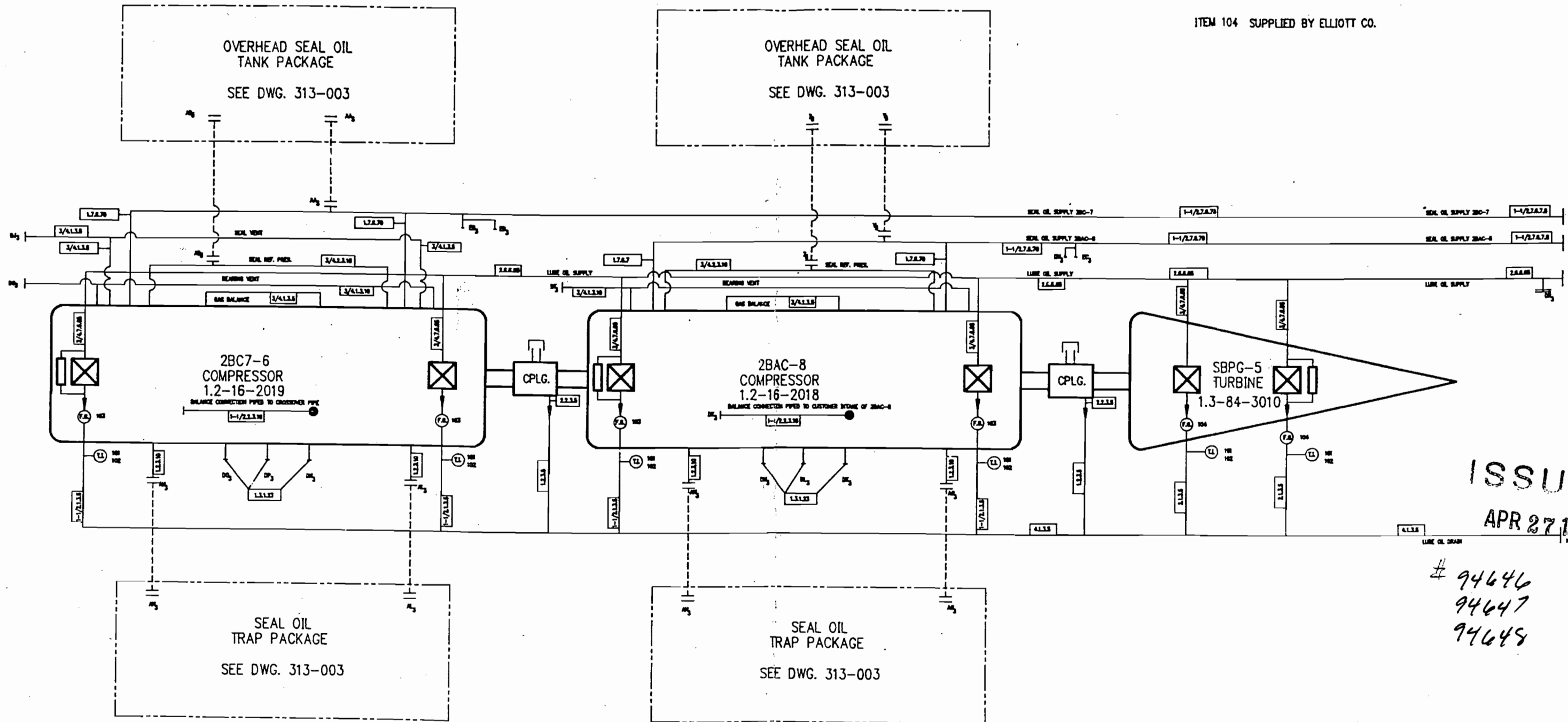
NOTICE
 THIS DOCUMENT CONTAINS CONFIDENTIAL AND TRADE SECRET
 INFORMATION AND IS THE PROPERTY OF DRESSER-RAND COMPANY
 AND IS PROVIDED TO THE RECEIVER IN CONFIDENCE.

NOTES: ITEM 101 WELL-THERMOMETER #693, MODEL C
 2-1/2" INSERTION/1" PROCESS CONNECTION

ITEM 102 THERMOMETER - ASHCROFT 0-250°F EVERY ANGLE
 1/2" NPT, 3" DIAL, 18-8SS
 4" STEM LENGTH

ITEM 103 SIGHT GLASS - JP #910F, 2" X 150# RF FLG.
 CARBON STEEL, NO FLAPPER

ITEM 104 SUPPLIED BY ELLIOTT CO.



ISSUED
 APR 27 1994

94646
 94647
 94648

REFERENCE	DATE	BY

<small> CHECK ENGINE SPECIFICATIONS ALL DIMENSIONS ARE IN INCHES UNLESS OTHERWISE SPECIFIED ALL THREADS OR OTHER HARDWARE CONFORM TO ASME AND ANSI SPECIFICATIONS UNLESS OTHERWISE SPECIFIED ALL DIMENSIONS ARE IN INCHES UNLESS OTHERWISE SPECIFIED ALL THREADS OR OTHER HARDWARE CONFORM TO ASME AND ANSI SPECIFICATIONS </small>	CONTRACT NO. 21,747A BY DATE TYPE 20 DRAWN MR 02/14/94 SCALE NTS CHECKED JK 02/14/94	AUXILIARY ARRANGEMENT DRESSER-RAND TURBO PRODUCTS DIVISION CLERMONT, N.Y. USA
MANUFACTURED BY DRESSER-RAND PRODUCT SUPPORT DIVISION HOUSTON, TX USA		SHT. REV. 479-895 1 of 1

C B A A B C