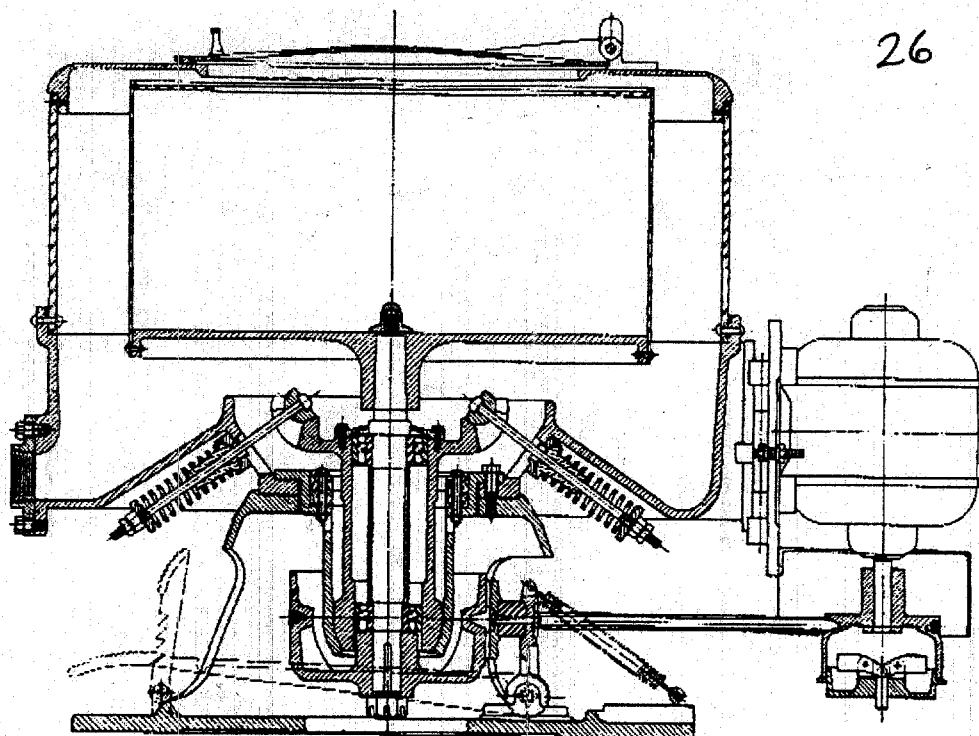


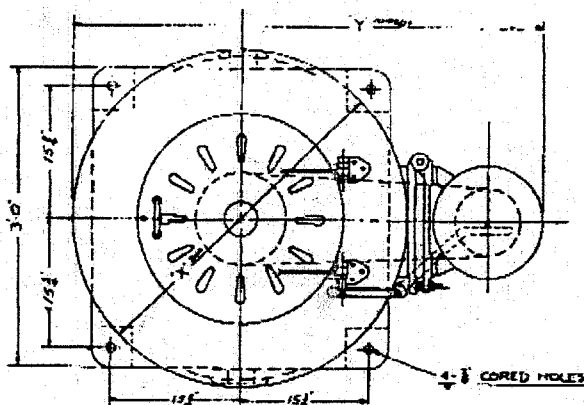
Fletcher Jr

26 1200 RPM 859.5



SECTIONAL VIEW OF 30" "JUNIOR" EXTRACTOR

#93865

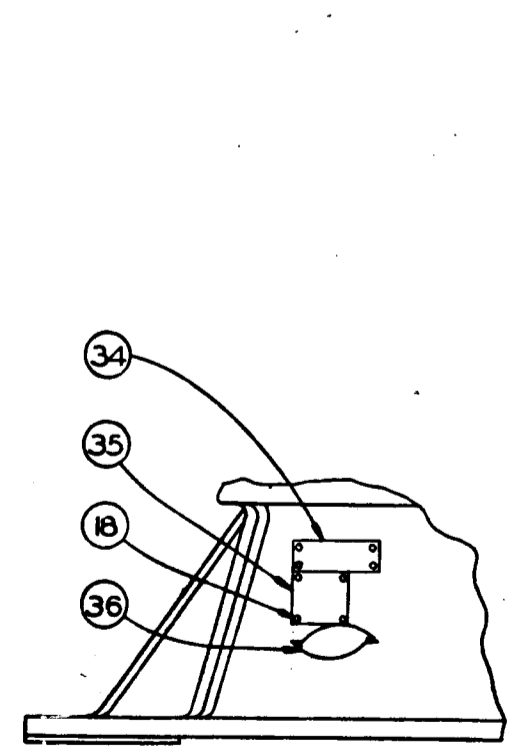
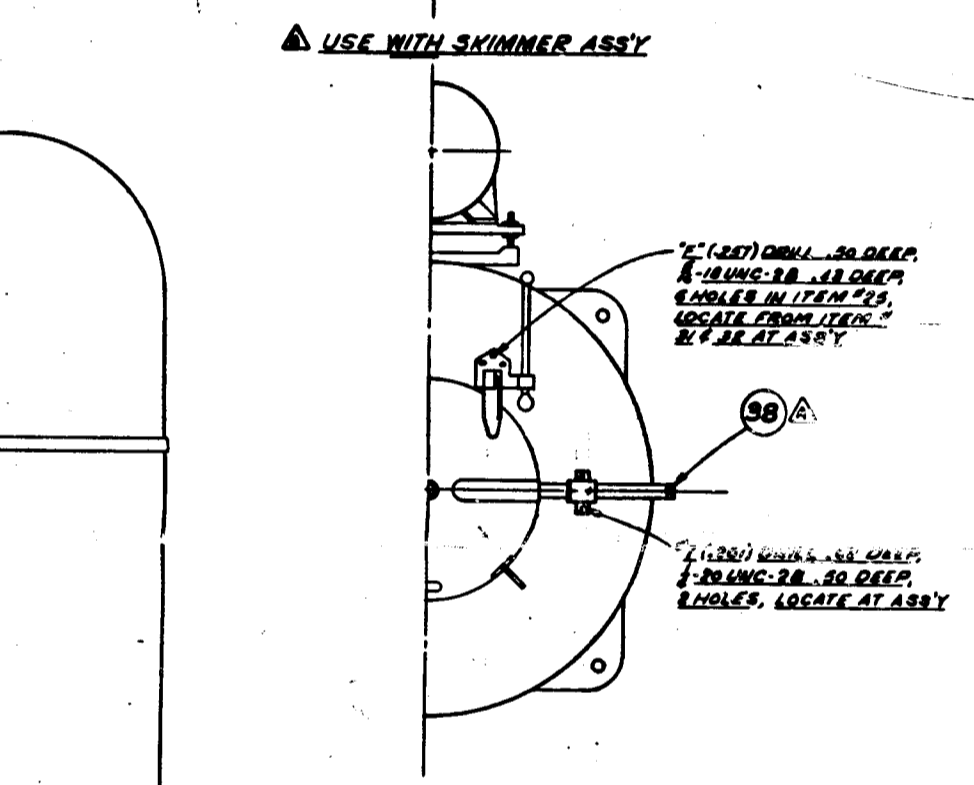
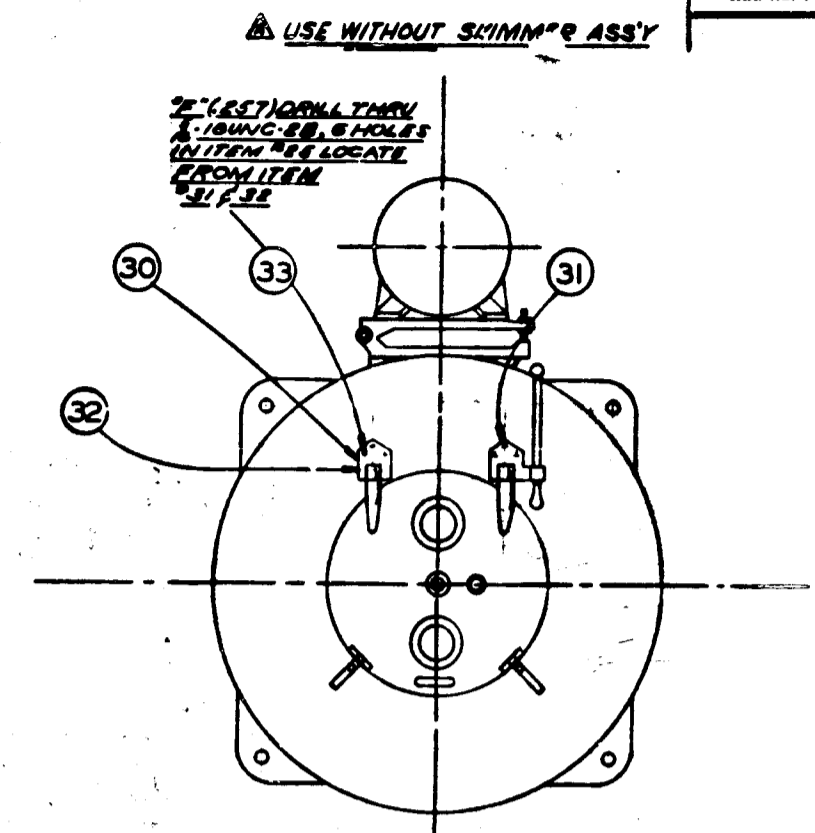
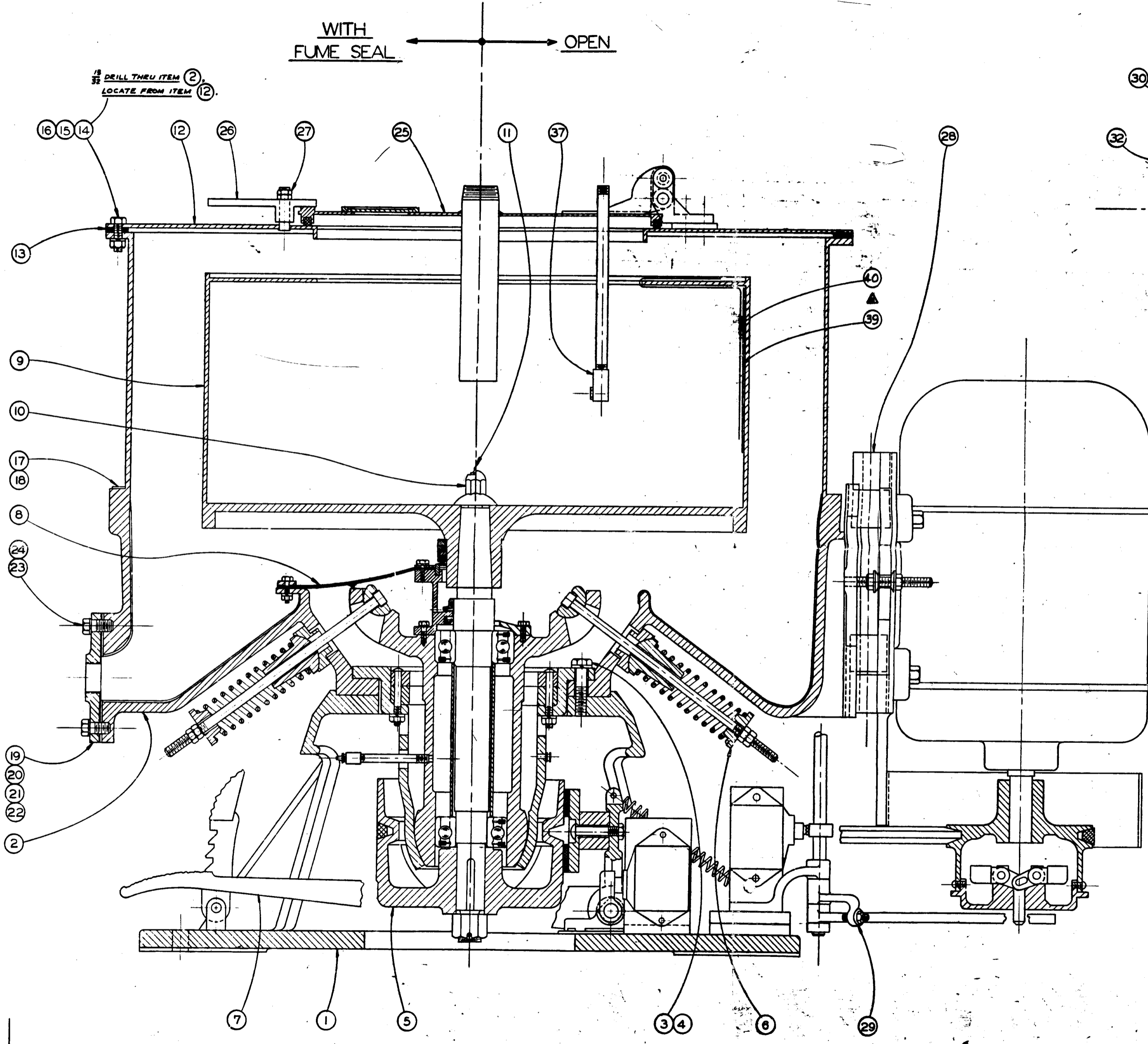


FLOOR PLAN OF "JUNIOR" EXTRACTOR

| SIZE | "X"  | "Y"   |
|------|------|-------|
| 30"  | 3'4" | 4'7"  |
| 33"  | 3'5" | 4'7"  |
| 36"  | 3'8" | 4'10" |

SPECIFICATIONS

| BASKET     |         |             |            | MOTOR | Revolutions Per Minute | Centrifugal Force (Times Gravity) | WEIGHTS (Approximate) |          |
|------------|---------|-------------|------------|-------|------------------------|-----------------------------------|-----------------------|----------|
| DIMENSIONS |         | CAPACITY    |            |       |                        |                                   | Nominal H. P.         | Basket   |
| Width      | Depth   | Total       | Wall       |       |                        |                                   |                       |          |
| 30"        | 14"     | 5.5 c. ft.  | 2.8 c. ft. | 3     | 1100                   | 490                               | 2000                  | 2200 lb. |
| 33"        | 18 3/4" | 8.5 c. ft.  | 5.5 c. ft. | 3     | 900                    | 380                               | 2100                  | 2300 lb. |
| 36"        | 18 3/4" | 10.0 c. ft. | 6.2 c. ft. | 3     | 900                    | 420                               | 2300                  | 2600 lb. |



SCALE: 1/4

#93865

| REVISION | DATE | BY | APPROVALS |
|----------|------|----|-----------|
|          |      |    |           |
|          |      |    |           |

|   |  |  |  |                                    |                                |
|---|--|--|--|------------------------------------|--------------------------------|
| <b>SHARPLES - STOKES</b><br><b>FLETCHER - MERRILL</b><br>Equipment Division - General Chemicals Corporation<br>Wilmington, DE 19804 |  | GEOMETRIC LIMITS<br>UNLESS OTHERWISE SPECIFIED                     | DIMENSIONAL LIMITS<br>UNLESS OTHERWISE SPECIFIED                   | TITLE<br><b>HURRICANE ASSEMBLY</b> | DRAWN BY<br>CHECKED BY<br>DATE |
| A. FINISH<br>B. DIMENSIONS<br>C. TOLERANCES<br>D. UNFINISHED<br>E. SURFACE FINISH   | DIMENSIONS<br>FINISH<br>TOLERANCES<br>UNFINISHED<br>SURFACE FINISH | DIMENSIONS<br>FINISH<br>TOLERANCES<br>UNFINISHED<br>SURFACE FINISH | DIMENSIONS<br>FINISH<br>TOLERANCES<br>UNFINISHED<br>SURFACE FINISH | PART NO.<br>F-F1284                | APPROVALS<br>DATE<br>BY        |

THIS PRINT REPRESENTS DESIGN AND DIMENSIONAL SPECIFICATIONS OF THE HURRICANE ASSEMBLY. IT IS LOANED BY CONFIDENCE AND MUST BE RETURNED ON DEMAND. ANY USE DETRIMENTAL TO THE INTERESTS OF THE FURNISHING ORGANIZATION IS PROHIBITED. IF THIS PRINT IS LAMINATED, COVERED OR REPRODUCED WITHOUT PERMISSION.

| LINE NO. | S. OR REQ. NO. | IN STK. | QUAN. PER ORDER | QUAN. PER MACH. | PART NO. | SYMBOL NO.  | DESCRIPTION                             | DW ITE |
|----------|----------------|---------|-----------------|-----------------|----------|-------------|---|--------|
| 1        |                |         |                 | 1               |          | F-N14506-1  | Support, Motor Plate                    | 1      |
| 2        |                |         |                 | 1               |          | F-H2186-174 | Pin, Hinge                              | 2      |
| 3        |                |         |                 | 1               |          | F-N14364-1  | Plate, Motor                            | 3      |
| 4        |                |         |                 | 2               |          | 1DC68A      | Screw, Socket Set<br>5/16 - 18 x 3/8    | 4      |
| 5        |                |         |                 | 2               |          | F-S58374-1  | Washer, Spherical                       | 5      |
| 6        |                |         |                 | 1               |          | F-C12048-8  | Stud                                    | 6      |
| 7        |                |         |                 | 2               |          | 1FE6A       | Nut, Hex Check 1/2 - 13                 | 7      |
| 8        |                |         |                 | 1               |          | F-S34386-1  | Guard, Pulley                           | 8      |
| 9        |                |         |                 | 4               |          | 1CB47A      | Screw, Rd. Hd. Mach.<br>1/4 - 20 x 3/4  | 9      |
| 10       |                |         |                 | 4               |          | 1MB10A      | Washer, Spring Lock 1/4                 | 1      |
| 11       |                |         |                 | 1               |          | F-D8482/1   | Pulley, Motor                           | ** 1   |
| 12       |                |         |                 | 2               |          |             | Block, Filler                           | * 1    |
| 13       |                |         |                 | 3               |          | 1BC94A      | Screw, Hex. Hd. Cap<br>5/8 - 11 x 3 1/2 | 1      |
| 14       |                |         |                 | 1               |          | 1BF84A      | Screw, Fl Hd. Cap<br>5/8 - 11 x 3 1/2   | 1      |
| 15       |                |         |                 | 1               |          |             | Belt                                    | * 1    |
| 16       |                |         |                 | 1               |          |             | Motor                                   | * 1    |
| 17       |                |         |                 |                 |          |             |   |        |
| 18       |                |         |                 |                 |          |             |   |        |
| 19       |                |         |                 |                 |          |             |   |        |
| 20       |                |         |                 |                 |          |             |   |        |
| 21       |                |         |                 |                 |          |             | * To Be Specified                       | 900    |
| 22       |                |         |                 |                 |          |             | ** Specify & attach B/M                 | 901    |

|                    |  |  |  |  |  |  |  |           |        |      |              |         |  |
|--------------------|--|--|--|--|--|--|--|-----------|--------|------|--------------|---------|--|
| REV. NO.           |  |  |  |  |  |  |  | ACCT. NO. |        |      |              |         |  |
|                    |  |  |  |  |  |  |  | BASIC     |        |      |              |         |  |
| DESCRIPTION        |  |  |  |  |  |  |  | DELETE    |        |      |              |         |  |
| Drive Assembly     |  |  |  |  |  |  |  |           |        |      |              |         |  |
| 30" Junior Textile |  |  |  |  |  |  |  |           |        |      |              |         |  |
| 215 Fr. Motor      |  |  |  |  |  |  |  |           |        |      |              |         |  |
|                    |  |  |  |  |  |  |  | ADD       |        |      |              |         |  |
|                    |  |  |  |  |  |  |  | TOTAL     |        |      |              |         |  |
|                    |  |  |  |  |  |  |  | MACHINE   | B/M BY |      | ASSEMBLY NO. |         |  |
|                    |  |  |  |  |  |  |  | F         | CL     |      | F-E6523/2    |         |  |
|                    |  |  |  |  |  |  |  | SHEET 1   |        | OF 1 |              | DATE    |  |
|                    |  |  |  |  |  |  |  |           |        |      |              | 2/14/68 |  |

DRAWING NUMBER  
F-E6523

DRAWING NUMBER  
PLAN HOLD CORPORATION - IRVINE, CALIFORNIA  
REORDER BY NUMBER 10/247

DRAWING NUMBER  
PLAN HOLD CORPORATION - IRVINE, CALIFORNIA  
REORDER BY NUMBER 10/247

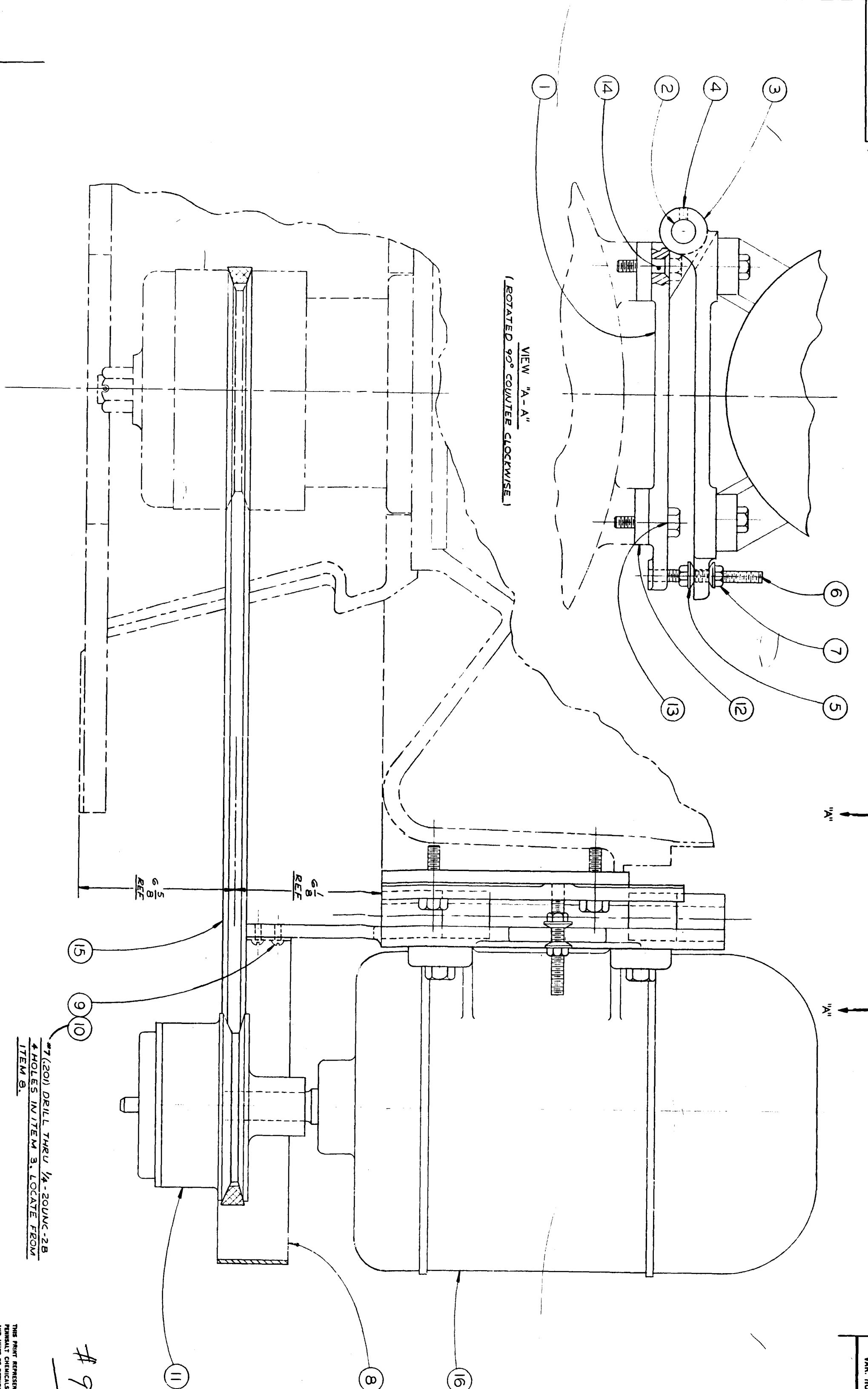
DRAWING NUMBER  
PLAN HOLD CORPORATION - IRVINE, CALIFORNIA  
REORDER BY NUMBER 10/247

DRG. NO.

REVISION

|  |  |
|--|--|
|  |  |
|  |  |
|  |  |
|  |  |
|  |  |
|  |  |
|  |  |
|  |  |
|  |  |
|  |  |

DETRENCH - PLAN - 127 Ditching Training Club 09/81



1/2"  
1/2"

#7 (20) DRILL THRU 1/4-20UNC-2B  
#4 HOLES IN ITEM 3, LOCATE FROM  
ITEM 9.

#93865

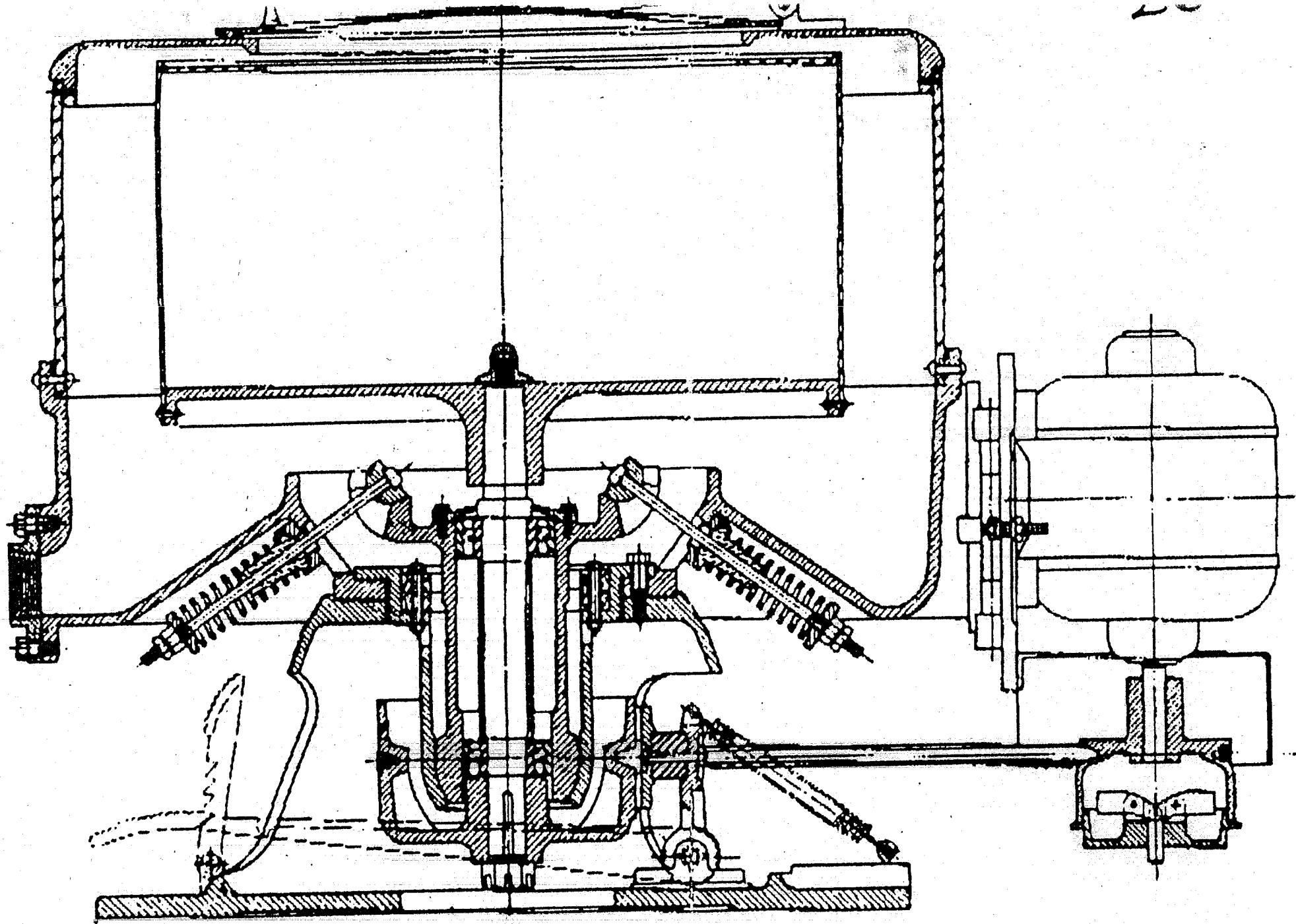
SHARPLES - STOKES  
FLETCHER - MERRILL  
Equipment Division - Pennsalt Chemicals Corporation  
WARMINSTER, PA. 18074

| GEOMETRIC LIMITS           |                            | DIMENSION LIMITS           |                            | TITLES       |                            |
|----------------------------|----------------------------|----------------------------|----------------------------|--------------|----------------------------|
| UNLESS OTHERWISE SPECIFIED | UNLESS OTHERWISE SPECIFIED | UNLESS OTHERWISE SPECIFIED | UNLESS OTHERWISE SPECIFIED |              |                            |
| 1. FINISH                  | AS MANUFACTURED            | 0.015                      | 0.005                      | ASSEMBLY     | DRIVE ASSEMBLY             |
| 2. TOLERANCES              | FRACTIONAL                 | 0.005                      | 0.005                      | DRAWING      | (HURRICANE)                |
| 3. ANGULARITY              | 1/2°                       | 0.005                      | 0.005                      | FRIST USER   | JUN/78                     |
| 4. CONCENTRICITY           | 1/2 TYPICAL 200% TOL       | 0.005                      | 0.005                      | DATE         | 2/20/59                    |
| 5. SURFACE FINISH          | 125 RA (320) 200% TOL      | 0.005                      | 0.005                      | PROJECT CODE | HURRICANE ASSEMBLY F-F1284 |
| 6. PART NUMBER             | 320% TOL                   | 0.005                      | 0.005                      | DATE         | 2/20/59                    |
| 7. PART NUMBER             | 320% TOL                   | 0.005                      | 0.005                      | DATE         | 2/20/59                    |
| 8. PART NUMBER             | 320% TOL                   | 0.005                      | 0.005                      | DATE         | 2/20/59                    |
| 9. PART NUMBER             | 320% TOL                   | 0.005                      | 0.005                      | DATE         | 2/20/59                    |
| 10. PART NUMBER            | 320% TOL                   | 0.005                      | 0.005                      | DATE         | 2/20/59                    |
| 11. PART NUMBER            | 320% TOL                   | 0.005                      | 0.005                      | DATE         | 2/20/59                    |
| 12. PART NUMBER            | 320% TOL                   | 0.005                      | 0.005                      | DATE         | 2/20/59                    |
| 13. PART NUMBER            | 320% TOL                   | 0.005                      | 0.005                      | DATE         | 2/20/59                    |
| 14. PART NUMBER            | 320% TOL                   | 0.005                      | 0.005                      | DATE         | 2/20/59                    |
| 15. PART NUMBER            | 320% TOL                   | 0.005                      | 0.005                      | DATE         | 2/20/59                    |
| 16. PART NUMBER            | 320% TOL                   | 0.005                      | 0.005                      | DATE         | 2/20/59                    |

THIS PRINT REPRESENTS DESIGN AND ENGINEERING EFFORTS OF THE PENNSALT CHEMICALS CORPORATION. IT IS LOANED IN CONFIDENCE AND MUST BE RETURNED ON DEMAND. ANY USE DETERMINED TO THE COMPANY BY PENNSALT CHEMICALS CORPORATION IS PROHIBITED. IT MUST NOT BE REPRODUCED OR REPRODUCED WITHOUT PERMISSION.

DATE: 2/20/59  
DRAWN BY: J.F.C.  
CHECKED BY: J.F.C.  
APPROVALS:  
F-F1284

VAR. NO. 1  
REV. 1  
NO. 1  
DESCRIPTION



SECTIONAL VIEW OF 30" "JUNIOR" EXTRACTOR

# 93865