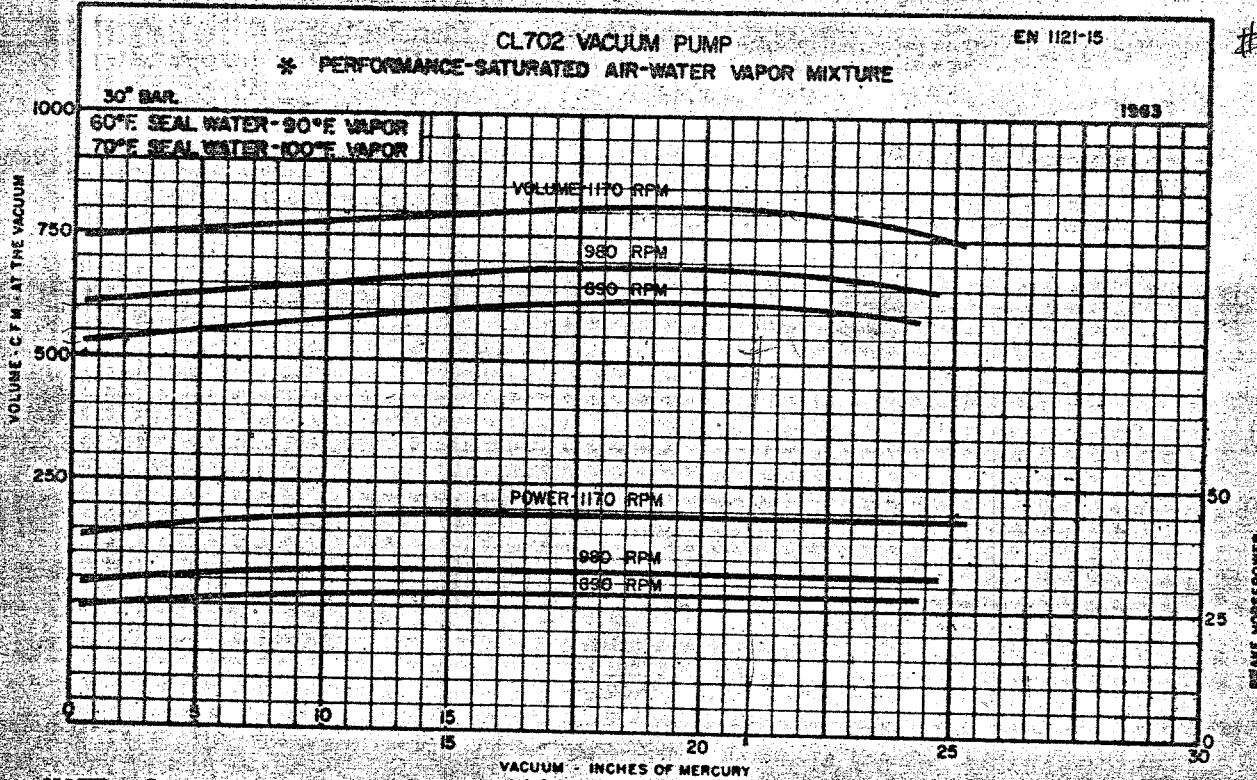
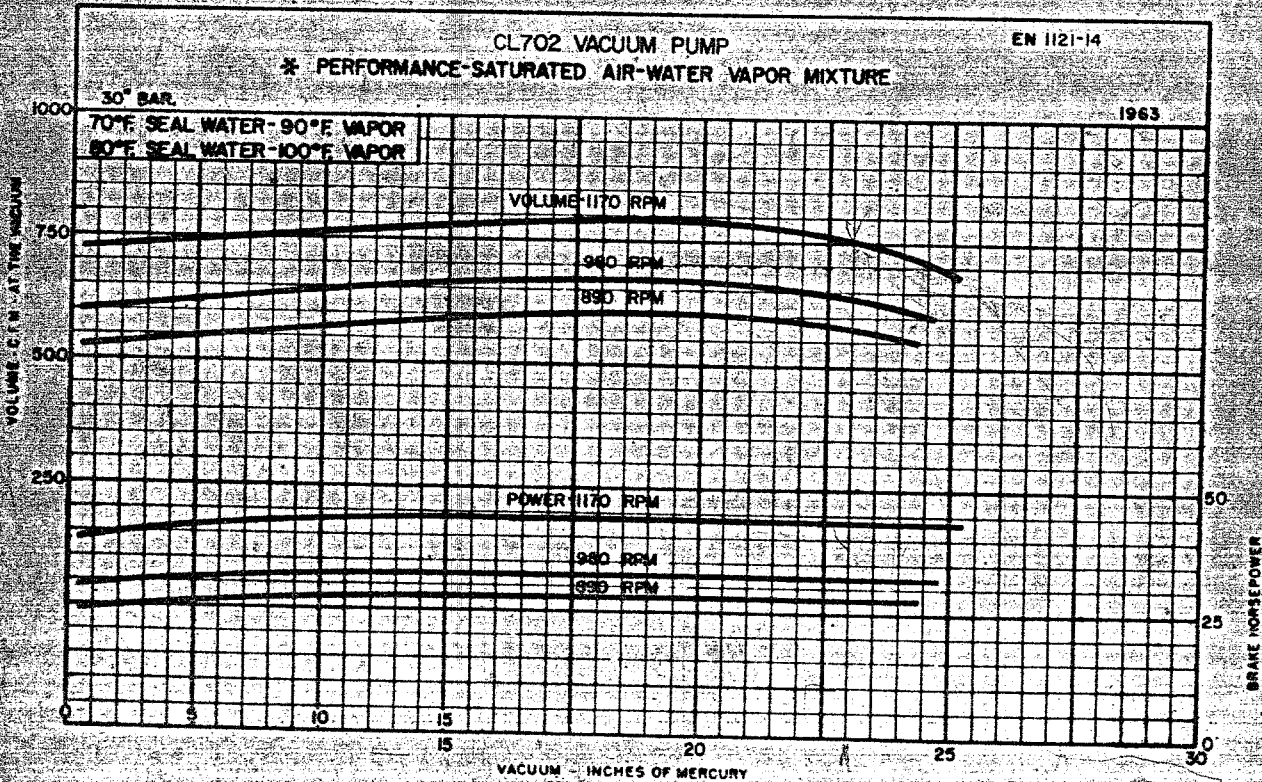


1990
1991

#93118
- 2
93119



* NOTE: Capacity to be reduced 5% @ 20", 8% @ 22", and 11% @ 24" Hg. Vacuum, and Brake Horsepower is to be increased 3% for Stainless Steel Vacuum Pumps.



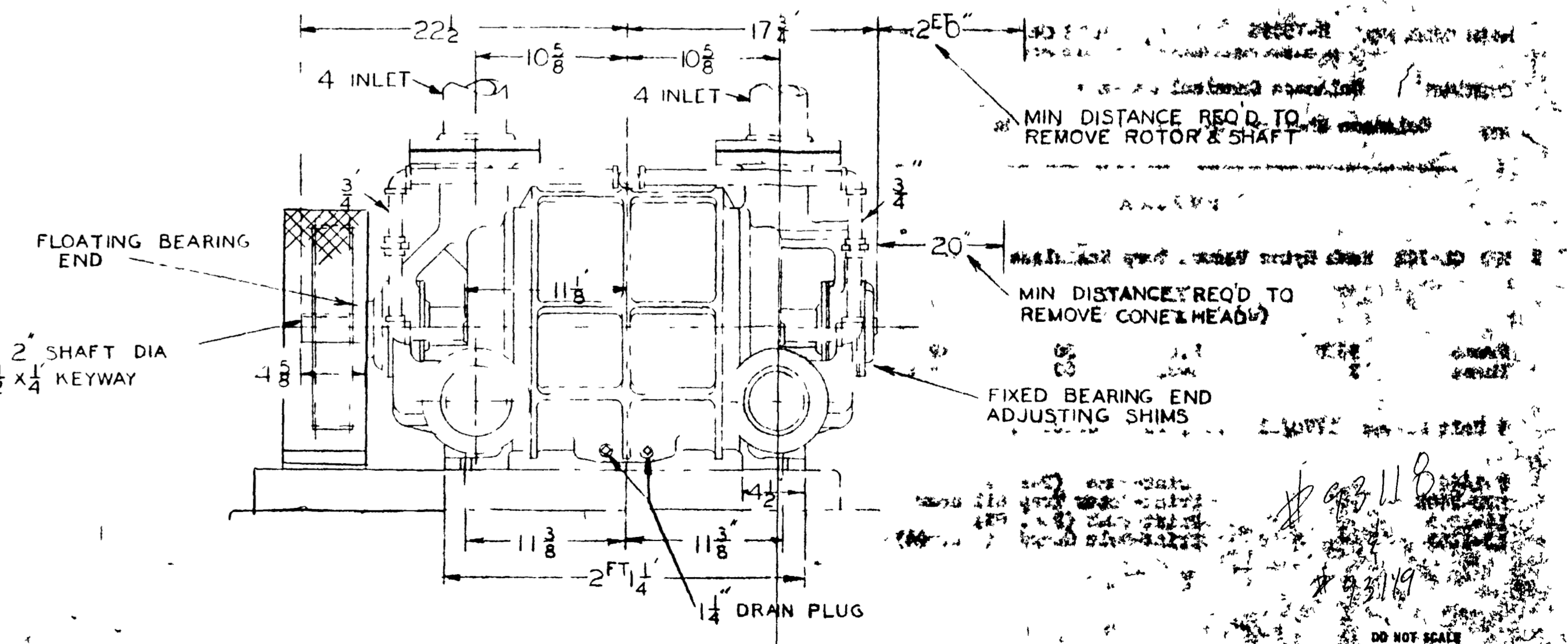
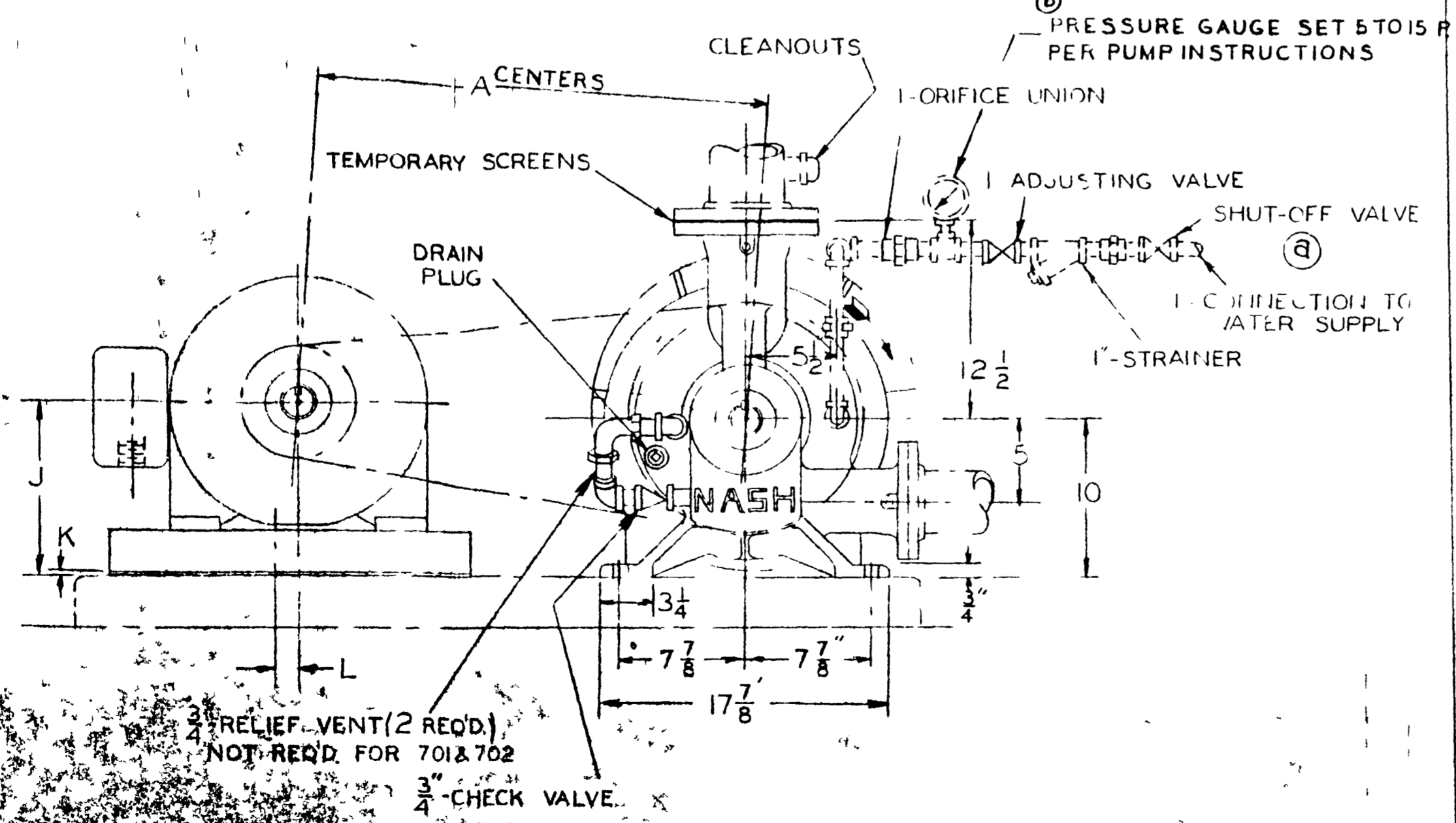
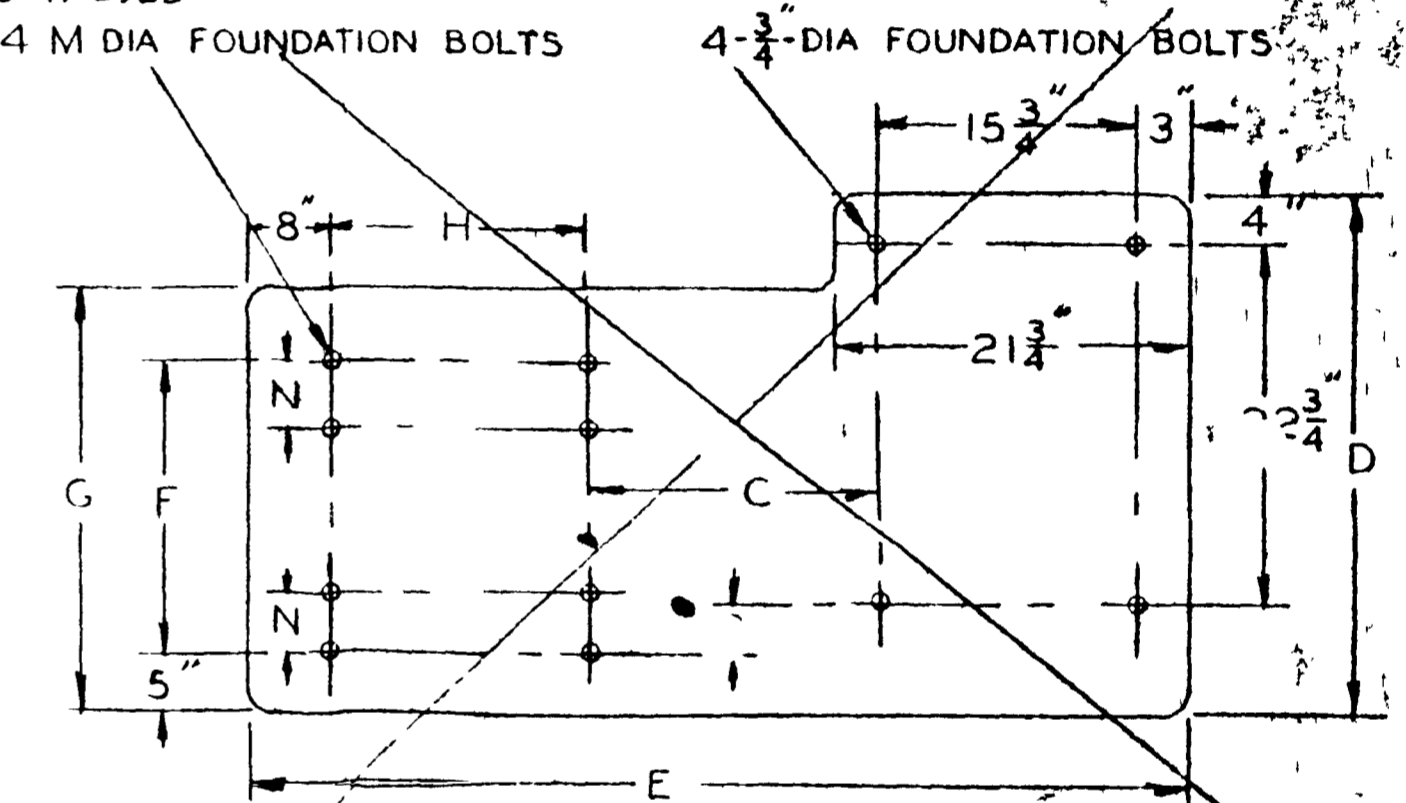
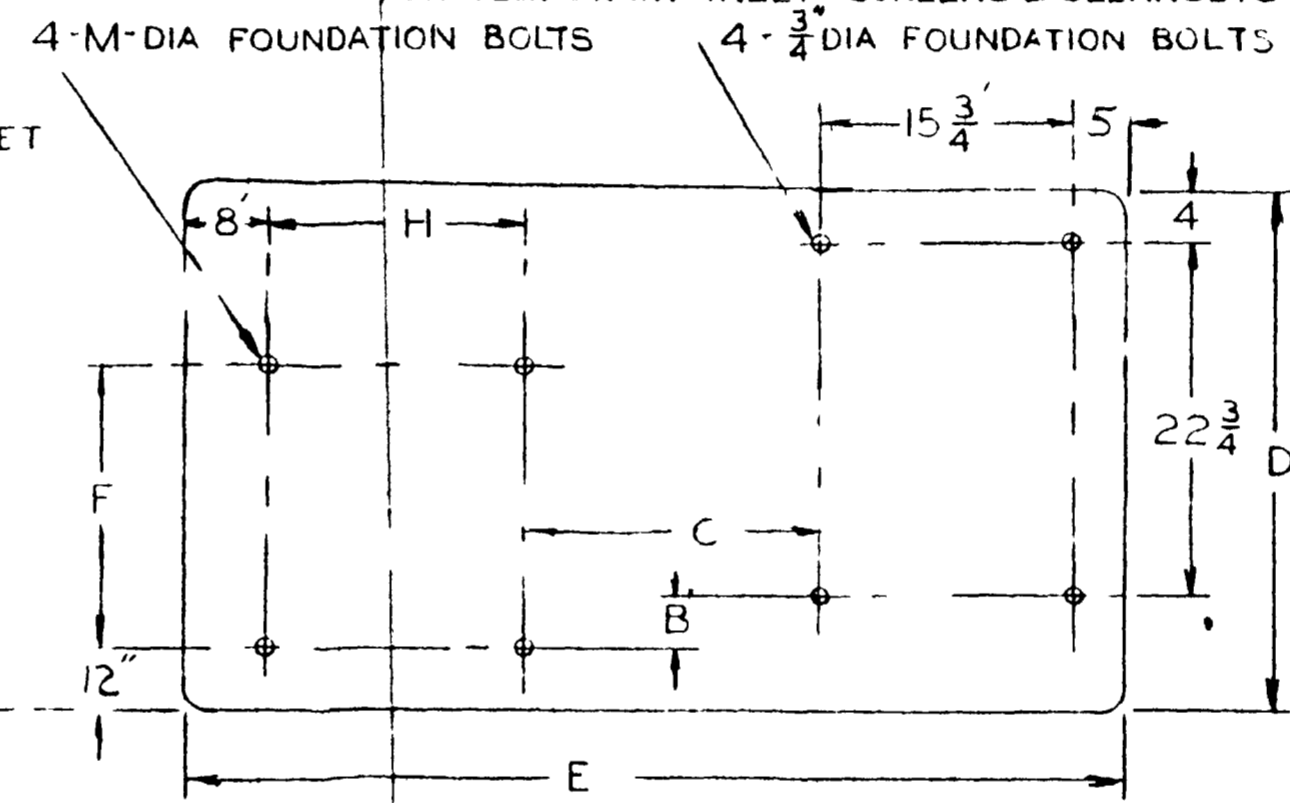
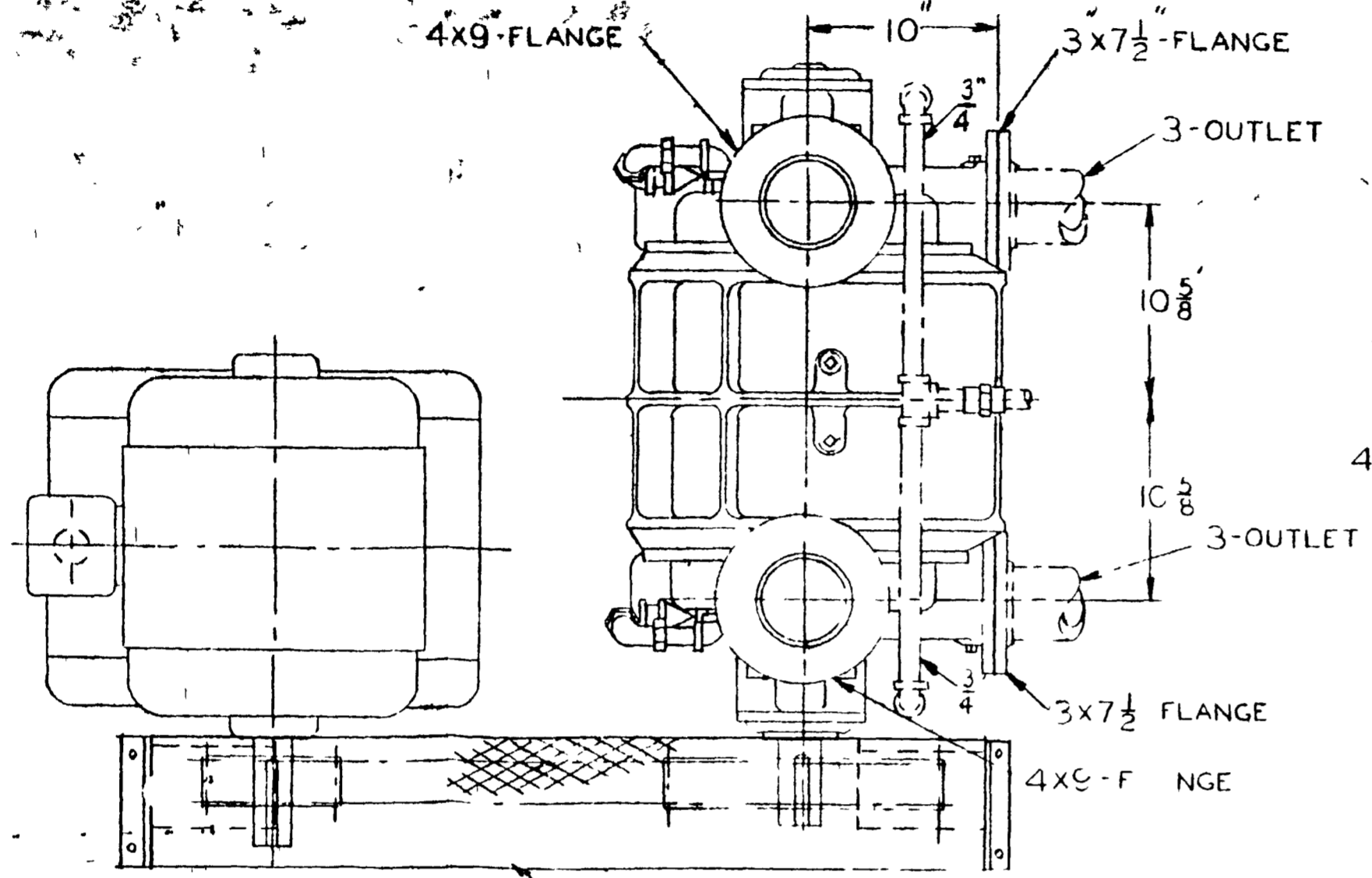
MOTOR FRAME	FIG-1 MOTOR RAILS, AND FOUNDATION DIMENSIONS IN INCHES												
	A	B	C	D	E	F	G	H	J	K	L	M	N
286 U						16 1/2	26 1/2	14	9	3/16		1/2	
324 U						17	27	16	10 1/2	3/16		5/8	
326 U						18 1/2	28 1/2	16	10 1/2	3/16		5/8	
364 U						18 1/4	28 1/4	18	11 1/2	1/4		5/8	
365 U	25 5/8	4 1/8	9 5/8	4 3/8	56 3/8	19 1/4		18	11 1/2	1/4	1"	5/8	

MOTOR FRAME	FIG 2 MOTOR, BASE AND FOUNDATION DIMENSIONS IN INCHES												
	A	B	C	D	E	F	G	H	J	K	L	M	N
286 U						16 1/2	26 1/2	14	9	3/16		1/2	
324 U						17	27	16	10 1/2	3/16		5/8	
326 U						18 1/2	28 1/2	16	10 1/2	3/16		5/8	
364 U						18 1/4	28 1/4	18	11 1/2	1/4		5/8	
365 U	25 5/8	4 1/8	9 5/8	4 3/8	56 3/8	19 1/4		18	11 1/2	1/4	1"	5/8	

NOTE - DO NOT USE THIS DRAWING FOR INSTALLATION UNLESS CERTIFIED CORRECT FOR YOUR ORDER

ORIFICE UNION & ADJUSTING VALVE IS FURNISHED BY NASH ENGR CO. ALL OTHER PIPING, VALVES, FITTINGS & COMPANION FLANGES 125 LBS SHOWN IN DOT DASH LINES & FOUNDATION BOLTS NOT FURNISHED

FOR TEMPORARY INLET SCREENS & CLEANOUTS SEE DWG H 2923 (C)



REV	DATE	BY	CHK'D	APP'D	REV
1					
2	3-7	TJS			
3	3-24				

SCALE: 3/8" = 1"

REV: 466

LET: WAS ZONE BY DATE LET: WAS ZONE BY DATE

NASH ENGINEERING CO. - 20 NORMAN CONN. USA