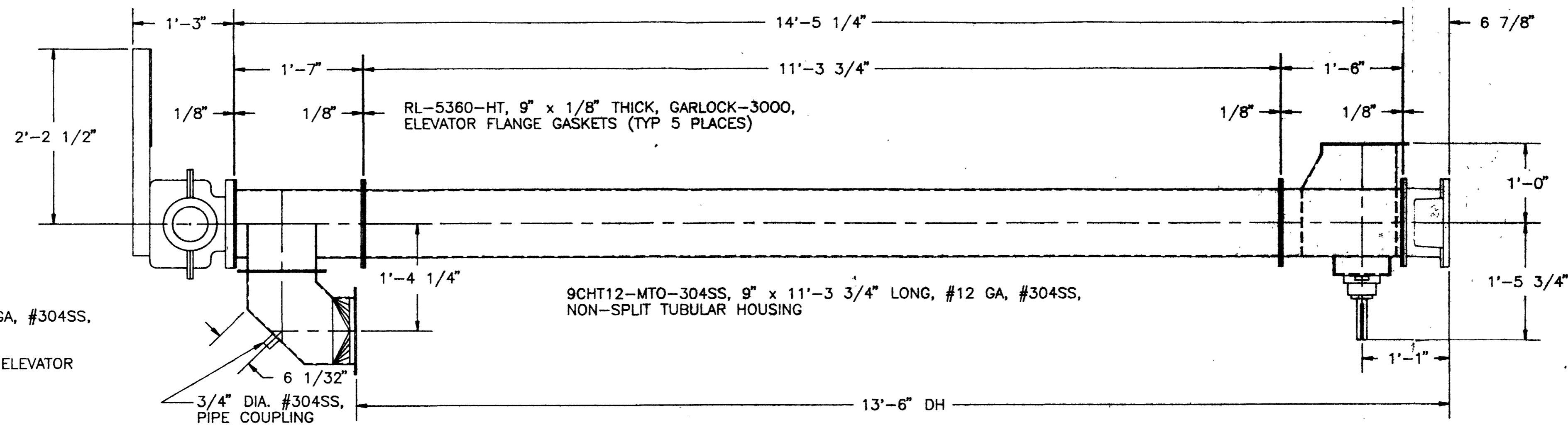
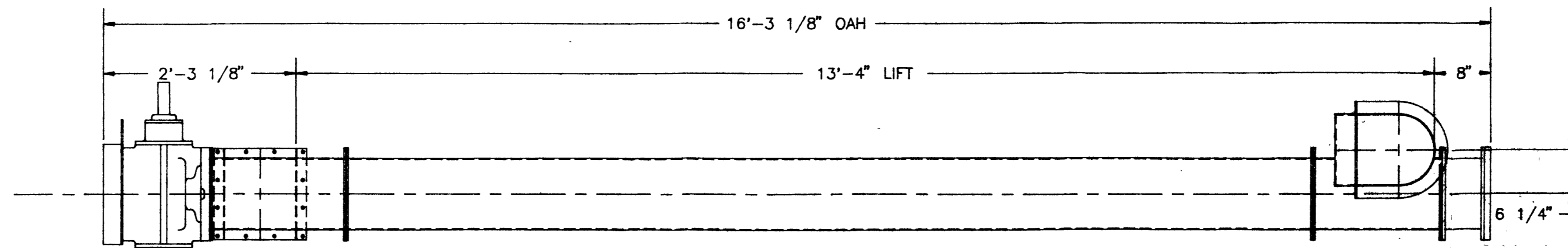


9.5S412-L-9-304SS, 9" x 2" 14'-5" LONG, LEFT HAND, 3/16" THICK, 9" PITCH, #304SS, SECTIONAL SCREW WITH 8" OF BARE PIPE & (2) KICKER BARS ON DISCHARGE END. FLIGHTS TO BE CONTINUOUSLY WELDED BOTH SIDES TO 3 1/2" SCH 40 PIPE, BUSHED & DRILLED STANDARD FOR 2" DIA SHAFT



XXRL-5087-304SS, 9" x 1'-7" LONG, #12 GA, #304SS, MODEL #4, SCREW ELEVATOR TOP HOUSING

MTO, 10" SQ x 10" DIA x #12 GA, #304SS, ELEVATOR TRANSFER SPOUT

9CHT12-MTO-304SS, 9" x 11'-3 3/4" LONG, #12 GA, #304SS, NON-SPLIT TUBULAR HOUSING

XXRL-5183A-304SS, 9" x 1'-6" LONG, 3/16" THICK, MODEL #4, SCREW ELEVATOR BOTTOM HOUSING, OFFSET TO THE LEFT WITH 1 1/2" DIA, PACKING GLAND SEAL

TEB3R, 1 1/2" DIA, FLANGED ROLLER BEARING

MTO, 1 1/2" DIA x 2'-3 1/2" LONG, #304SS, FEEDER DRIVE SHAFT WITH STANDARD TWO HOLE DRILLING, TRU-ARC GROOVES & 1 7/16" DIA x 5 3/4" LONG, TURN-DOWN WITH 3/8" x 3/16" x 5 1/2" LONG, KEYWAY

(2) #5100-150, 1 1/2" DIA, TRU-ARC RINGS

XRL-5658, 9" x 2", PEDESTAL BASE ASSEMBLY WITH CHROME PLATING IN PRODUCT ZONE & WITH #304SS, VERTICAL SHAFT

7 1/2 HP @ 170 RPM DRIVE

- 1) XRL-5149A, 9" x 2", ELEVATOR TOP DRIVE WITH #304SS VERTICAL SHAFT & WITH CHROME PLATING IN THE PRODUCT ZONE
- 1) MTO, #213-T, MILD STEEL, MOTOR BASE (C-3641A)
- 1) 2 B 50 SDS, QD SHEAVE
- 1) SDS 1 3/8, QD BUSHING
- 1) 2 B 250 SF, QD SHEAVE
- 1) SF 1 5/8, QD BUSHING
- 2) B-90, V-BELTS (MATCHED SET)
- 1) MTO, #14 GA, MILD STEEL, TOTALLY ENCLOSED BELT GUARD, PAINTED SAFETY YELLOW
- 1) 7 1/2 HP, 1750 RPM, 3/60/230-460 VOLT, TEFC, MOTOR, FRAME #213-T

GENERAL NOTES:

- 1) SHOP TEST ASSEMBLE WITH DRIVE
- 2) MTO, 5/8" x 4 3/4" LONG, #304SS, COUPLING BOLTS WITH LOCKNUTS (2 REQ'D)
- 3) MTO, 5/8" x 1 3/4" LONG, #304SS, TEE HEAD BOLTS WITH LOCKNUTS (4 REQ'D)
- 4) ALL ASSEMBLY BOLTS TO BE #304SS
- 5) 9CHT12-10-304SS, 9" x 10'-0" LONG, #12 GA, #304SS, NON-SPLIT TUBULAR HOUSING WITH (2) LOOSE END FLANGES (1 REQ'D) (SHIP LOOSE)

TOLERANCES				NOTES:			
DECIMAL DIMENSIONS AS SPECIFIED ALL OTHERS AS FOLLOWS UNLESS OTHERWISE SPECIFIED				1. REMOVE ALL SHARP AND UNNECESSARY SHARP CORNERS			
FRACTIONAL DIMENSIONS FOR FINISHING ± 1/64"				2. DO NOT SCALE DIMENSIONS			
FRACTIONAL DIMENSIONS FOR FABRICATION ± 1/16"				3. RIGHT IS RESERVED TO MAKE CHANGES AT OUR OPTION			
ANGULAR DIMENSIONS ± 1/2 DEGREE				THIS DRAWING IS BEING AND SHALL BE OUR PROPERTY AND MUST NOT BE LOANED, COPIED, OR REPRODUCED WITHOUT OUR WRITTEN PERMISSION. ALL RIGHTS OF DESIGN OR INVENTION ARE RESERVED.			
2	ADDED PIPE COUPLING	ROD 2/92					
1	13'-8" WAS 15'-10"	ROD 2/92		DRAWN: ROD DATE: 2/5/92 REFERENCE: APPROVED: DATE: TITLED: 9" x 2" x 13'-4" LIFT, TYPE #2 MODEL #4, #304SS, SCREW ELEVATOR ASSEMBLY W/ 7 1/2 HP DRIVE ORDER NO. 22-56032 SCALE 1" = 1'-0" SHEET OF PART NO. SD-22-56032-2			

#93093

BRANCE KRACHY COMPANY INC.
329 WEST WESTCHESTER
CORPUS CHRISTI, TEXAS, 78408
CUSTOMER P/O #339200128