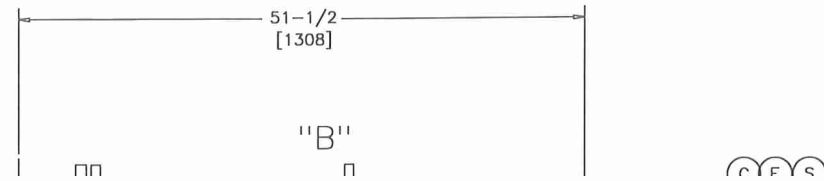


ITEM "P" REWORK NOTES.

CONTACT ENGINEERING BEFORE REWORK.

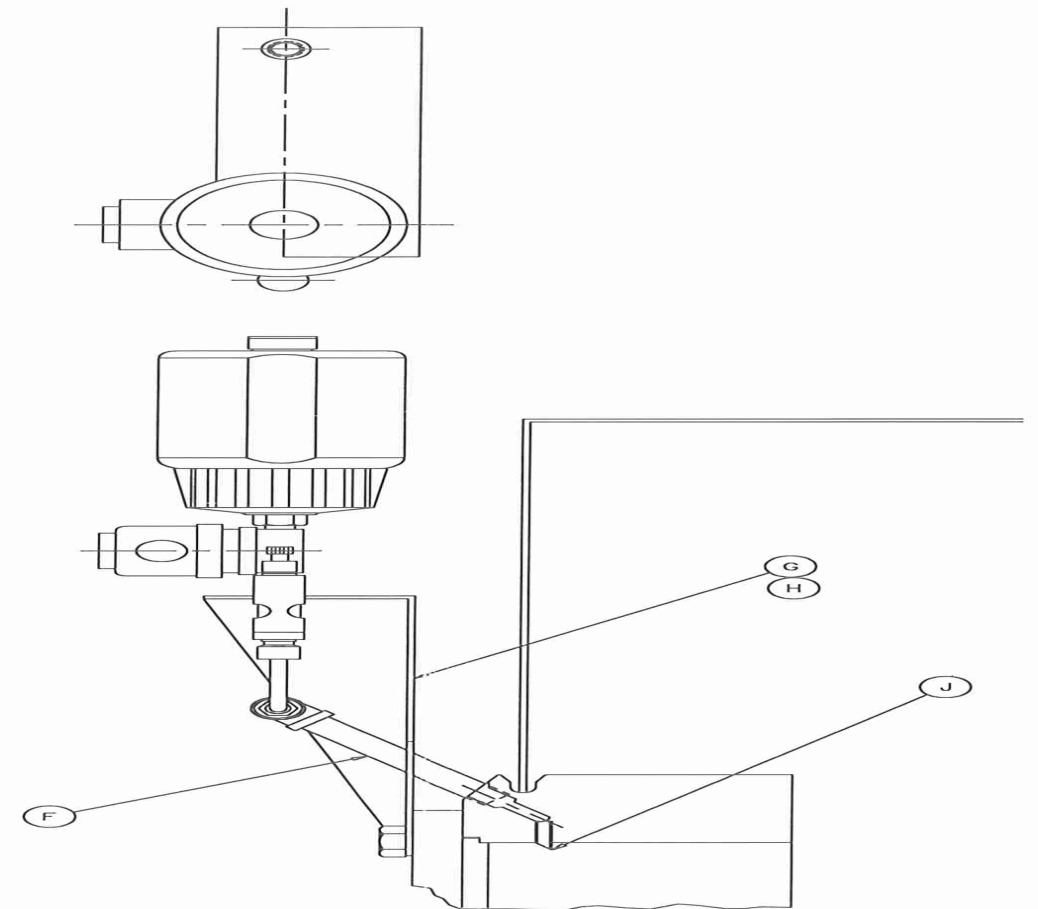
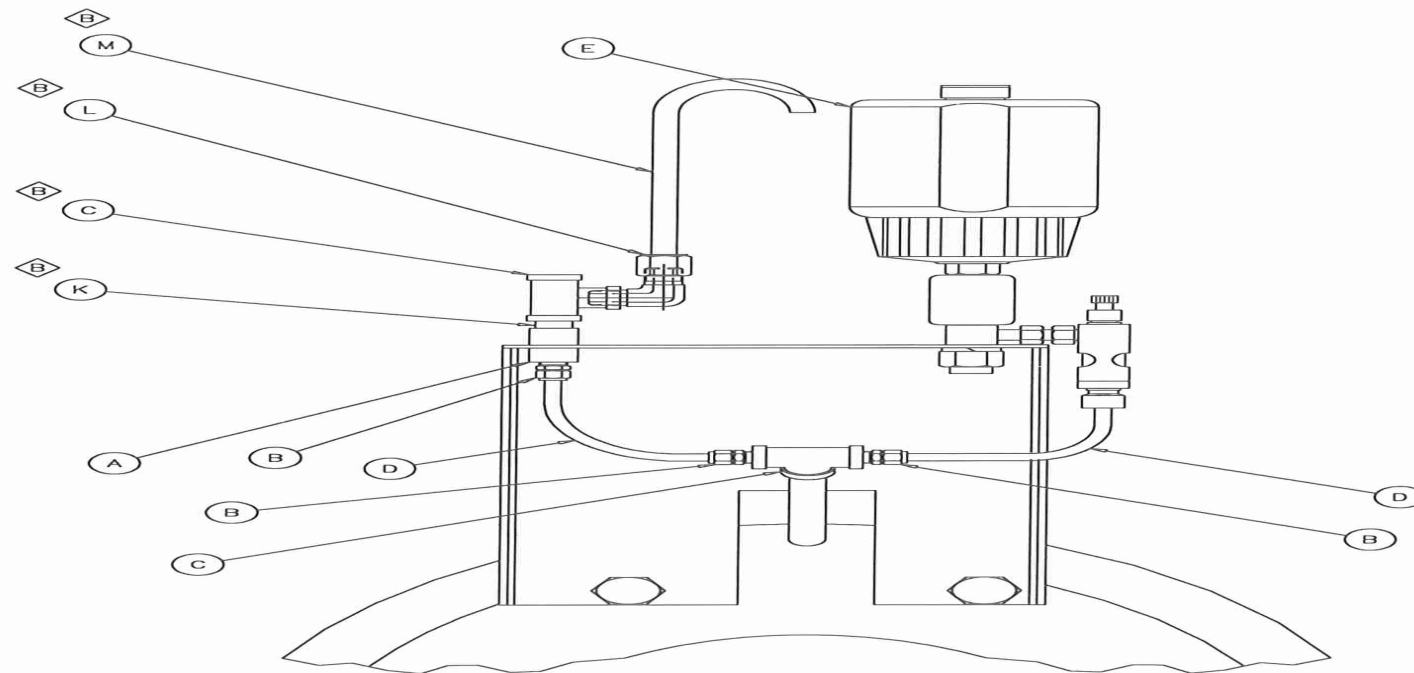
1. ITEM "P" TO BE REWORKED AT ASSEMBLY.
2. DRILL (1) HOLE FOR ITEM "L". REFERENCE DRAWING FOR LOCATION.
3. DRILL (2) HOLES FOR ITEM "E". REFERENCE DRAWING FOR LOCATION.
4. WELD IN ITEM "L" IN ITEM "P". WELDS MUST BE LEAK TIGHT.
5. INSTALL ITEM "M" IN ITEM "P".
6. INSTALL ITEM "E", QTY: 2 IN ITEM "P".
7. PAINT ITEM "P" PER PAINT SPEC. DO NOT PAINT MOTOR OR ELECTRICAL COMPONENTS.



ITEM	CODE OR PART NO.	QTY	MATERIAL	DESCRIPTION
A	350X5-19	1	*	TUBE FITTING PART KIT
B	*	REF.	BRASS	90° ELBOW, 3/8 NPT X 1/2 TUBE (QTY: 2, REF. A)
C	*	REF.	BRASS	90° ELBOW, 1/2 TUBE X 1/2 TUBE (QTY: 4, REF. A)
D	*	REF.	NYLON	1/2 TUBE OD. CLEAR TUBING (QTY: 20 FT, REF. A)
E	*	REF.	BRASS	1/2 TUBE X 1/2 TUBE BULKHEAD (QTY: 2, REF. A)
F	223X2299	12	*	1/2 TUBE CLIPS
G	405X0575	24	SST	SHCS 1/4-20 X 1/2 LG.
H	*	REF.	NYLON	8 MM CLEAR TUBING (QTY: 20 FT, REF. A)
J	223X235	12	NYLON	5/16 NYLON CABLE LOOP CONNECTORS
K	211X0589	2	*	METERING VALVE
L	401X0890	2	SST-304	PIPE PUSHING HEX HEAD, 1/4 X 1/8
M	400X0520	2	SST-304	CLOSE NIPPLE 1/8 NPT
N	*	*	*	*
P	211X0590	REF	STL	VOGEL RECIRCUTATING LUBE SYSTEM (ORDER ENTRY)
R	*	REF.	*	MALE CON. 1/8 NPT TO 8MM TUBE (QTY: 2, REF. A)
S	*	REF.	*	DOUBLE MALE, 1/2 TUBE TO 1/2 TUBE(QTY: 2 REF A)
T	*	REF.	*	TUBE TEE, 8MM TUBE (QTY: 1 REF A)
U	220X0277	1	*	TEMPERATURE GAUGE & THERMOWELL

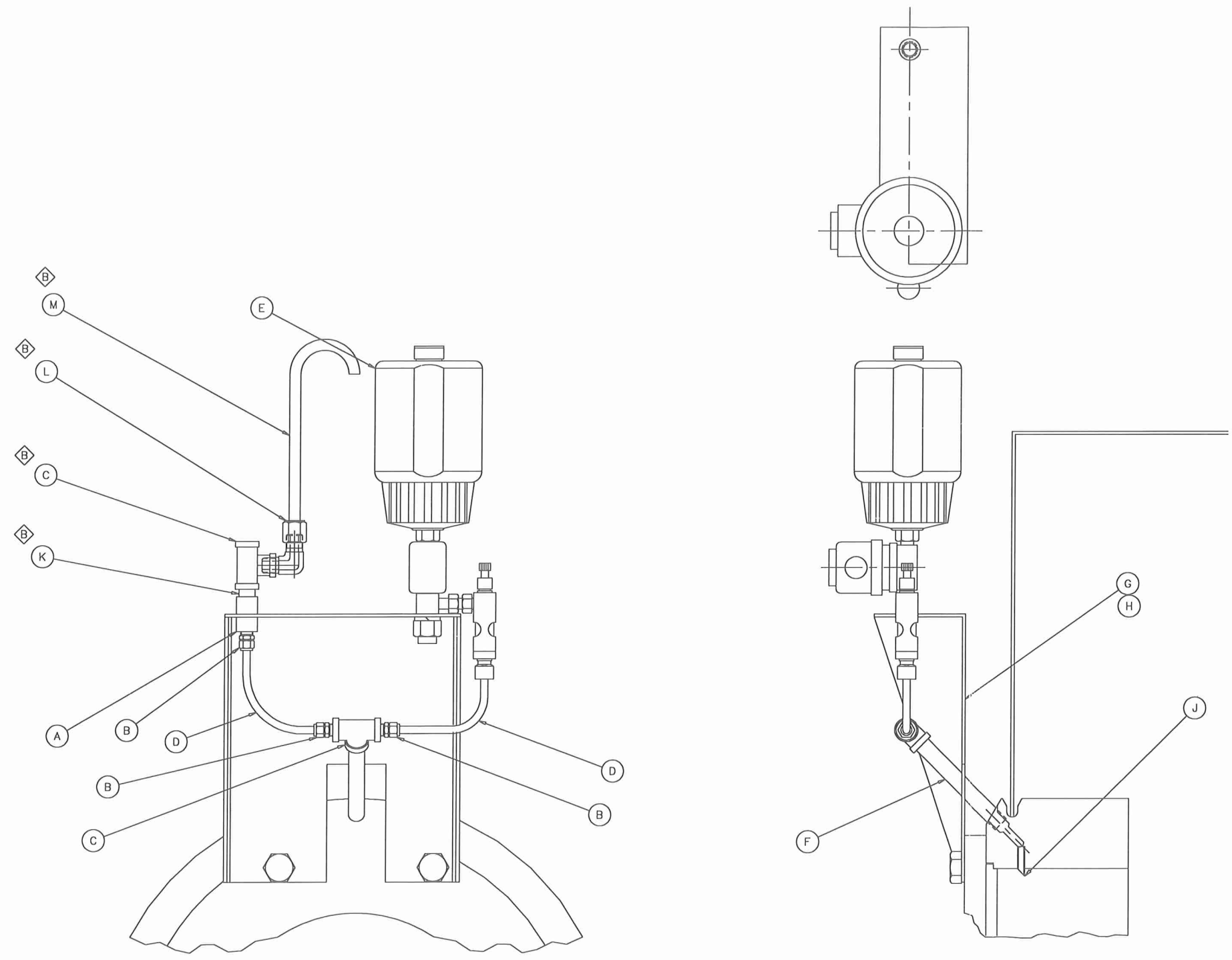
NOTES:

1. ITEM "A" IS A KIT OF PARTS. REFERENCE BILL OF MATERIAL TO SEE WHAT ITEMS AND QUANTITY ARE SUPPLIED IN ITEM "A".




ITEM	CODE OR PART NO.	QTY	MATERIAL	DESCRIPTION
A	401X0354	2	SST	COUPLING 1/4 NPT
B	223X1961	6	NYLON	MALE CONNECTOR 1/4 TUBE X 1/4 NPT
C	401X0889	4	SST	TEE 1/4 NPT (150#)
D	298X0193	4 FT	NYLON	TUBING 1/4 O.D. X .033 WALL
E	211X0545	2	*	DROP FEED ELECTRO OILER (120VAC/60HZ/1PH)
F	400X0344	2	SST	NIPPLE 1/4 NPT X 4 LG.
G	566-049-1	1	SST	OILER MOUNTING BRACKET, D-36, L.H.
H	566-049-2	1	SST	OILER MOUNTING BRACKET, D-36, R.H.
J	243-049-1	2	SST	DRIPPER
K	400X0360	2	SST	CLOSE NIPPLE 1/4
L	223X0821	2	SST	MALE 90 DEGREE ELBOW, 1/4 NPT X 3/8 TUBE
M	298X0195	2 FT	SST	3/8 TUBING
N	*	*	*	*

- NOTE:
1. REDUCE LENGTH OF ITEM "F" IF NEEDED.
 2. TACK WELD ITEM "A" INTO BRACKETS. GLASS BEAD.
 3. BEND 3/8 TUBING INTO A LETTER J.



TOLERANCES UNLESS OTHERWISE SPECIFIED
 ALL FRACTIONS: ± 1/32
 ALL DECIMALS: ± .010
 ALL ANGLES: ± 0.5°
 BREAK ALL EDGES .015" MAX

D		*	*	*	*	BACK-UP OILERS				
C		*	*	*	*	FOR A D-36 POD				
B		SEE EN#	N11225	2/23/99	TGM	RHH				
A		SEE EN#	N11157	1/15/99	TGM	*	SCALE	HALF	DR.	TGM
SYM	REVISIONS	DATE	BY	APP	DATE	9/7/98	CK	*	APPR.	


Manufacturers of Polar Parting Machinery
 BAP PROCESS EQUIPMENT AND SYSTEMS
 100 WEST STREET
 WARREN, RI 02891
 THIS DRAWING AND COPIES THEREOF REMAIN THE PROPERTY OF BAP PROCESS EQUIPMENT AND SYSTEMS, LLC. ALL RIGHTS ARE RESERVED FOR ITS USE IN LAYOUT, DESIGN, & DETAIL. COPYING OR REPRODUCTION IS PROHIBITED WITHOUT WRITTEN PERMISSION OF BAP PROCESS EQUIPMENT AND SYSTEMS, LLC.