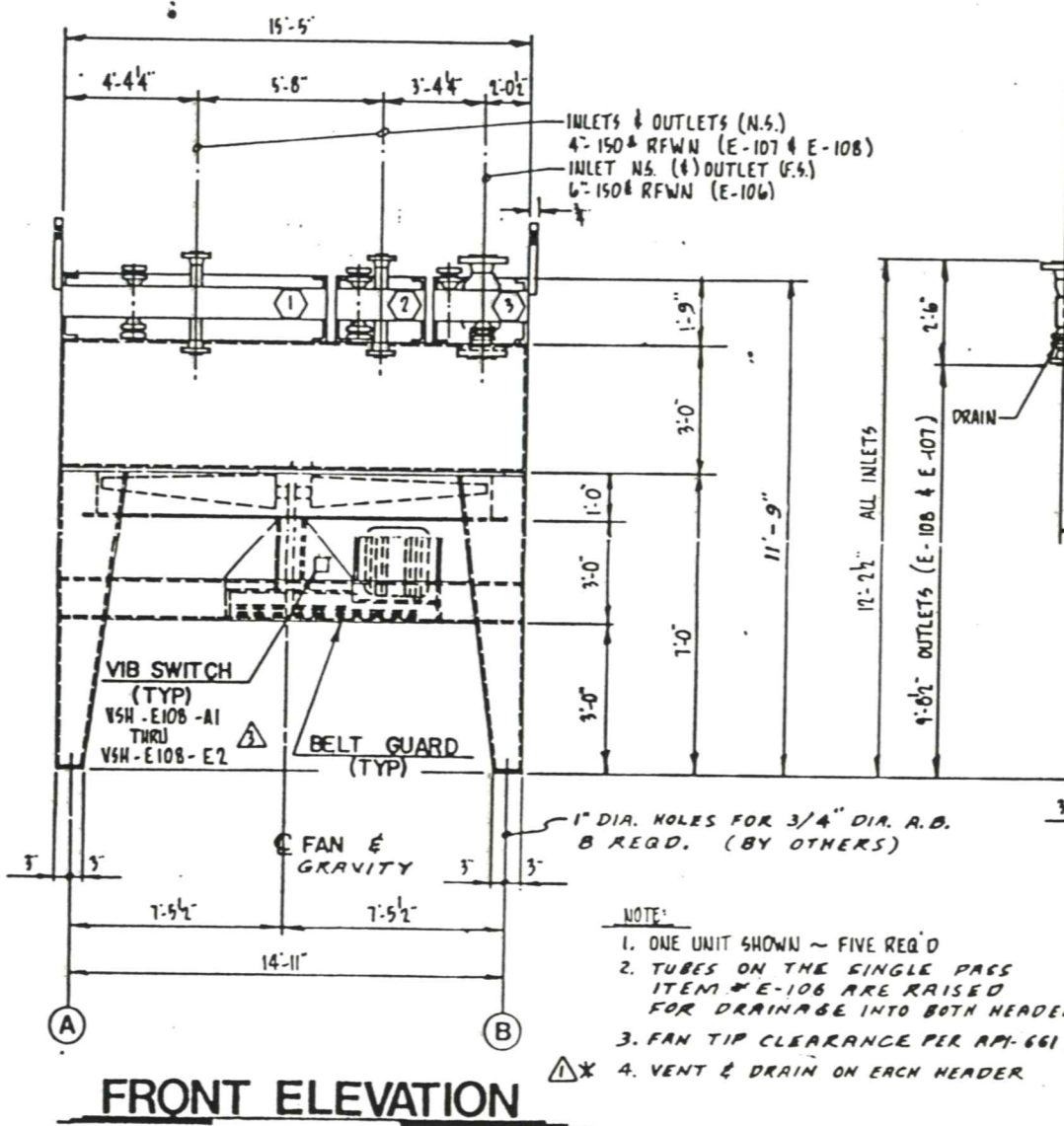
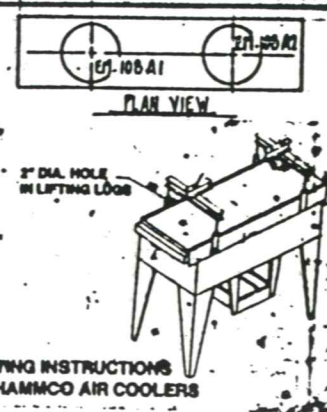


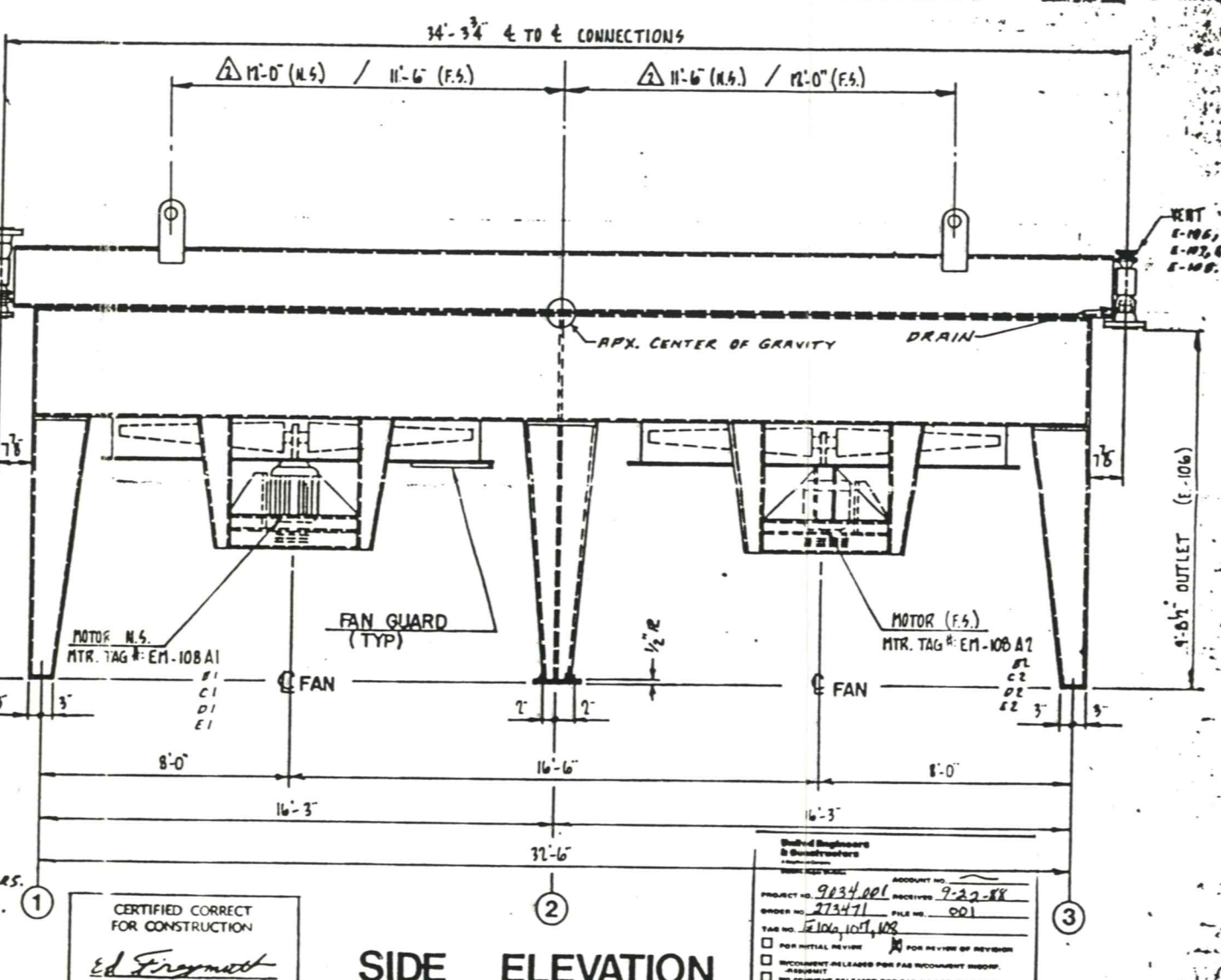
COLUMN LOADINGS IN KIPS	A1 OR A3	A2 OR B2	B1 OR B3
DEAD LOAD (WET) ↓	8.5	17.0	8.5
WIND LOAD ↓	1.0	2.0	1.0
TOTAL VERT. LOAD ↓	9.5	19.0	9.5
WIND SHEAR SIDE →	.9	1.7	.9
SEISMIC SHEAR ZONE ¹ →	.5	.9	.5

WIND LOADS CALCULATED USING A WIND LOAD OF 40 P.S.F.

ITEM NO.	E-108 A/E (1)	E-107 A/E (2)	E-106 A/E (3)
DESIGN PRESSURE	125 P.S.I.	125 P.S.I.	125 P.S.I.
DESIGN TEMP.	MIN. 0°F, MAX. 200°F	MIN. 0°F, MAX. 200°F	MIN. 0°F, MAX. 200°F
TEST PRESSURE	188 P.S.I.	188 P.S.I.	188 P.S.I.
CORR. ALLOWANCE	.0625"	.0625"	.0625"
INLET NOZZLE	(1) 4"-150 ⁴ RFWN	(1) 4"-150 ⁴ RFWN	(1) 6"-150 ⁴ RFWN
OUTLET NOZZLE	(1) 4"-150 ⁴ RFWN	(1) 4"-150 ⁴ RFWN	(1) 6"-150 ⁴ RFWN
* VENT & DRAIN	1 1/2" Ø-150 ⁴ RFWN Y BLIND FLG.	1 1/2" Ø-150 ⁴ RFWN Y BLIND FLG.	1 1/2" Ø-150 ⁴ RFWN Y BLIND FLG.
HEADER MATERIAL	SA-516-70	SA-516-70	SA-516-70
SERVICE	COMPRESSOR COOLING WATER	COMP. CYLINDER WATER CLR.	50/50 ETHYLENE GLYCOL/WATER



FRONT ELEVATION



SIDE ELEVATION

CERTIFIED CORRECT FOR CONSTRUCTION
Ed Frymuth
 SIGNED
 AUG. 26, 1988
 DATE

FOR INITIAL REVIEW
 FOR REVIEW BY REVISOR
 INCUMBENT RELEASED FOR FAB INCUMBENT REQD.
 NO COMMENT RELEASED FOR FAB. NO RETURN REQD.
 NOT RELEASED FOR FAB. REVISE & RESUBMIT FOR REVIEW
 FOR INFIELD RETURN REQUIRED

REV	DATE	BY	DESCRIPTION
1	9-21-88	LR	RELOCATED LIFTING LUGS
2	9-26-88	LR	REV. PER CUST'S RETURN DWG DATED 8-21-88

FINISH: HEADERS-SSPC-G & PAINT PER SPEC. NWE-9P-614
 BUNDLE FRAMES & STRUCTURE-SSPC-G & PAINT
 PER SPEC. NWE-9P-614.
 DESIGNED & CONSTRUCTED IN ACCORDANCE WITH THE LATEST EDITION OF THE ASME CODE (SECTION VIII, DIV. I), API 661, PROJECT SPEC. NWE-9P-506 AND 507 STAMPED.

FANS: MOORE SERIES 60 13 FT. DIA. 7 BLADES, MANUAL PITCH.
 MOTORS: 40 H.P., 1150 RPM, 314 T FR., TEFC, M & C, RI-EFF. 460/3/60, MFG: MARATHON
 VIB. SWITCHES: PMC/BETA MODEL 4505 EXP. PROOF. INCLUDES 120 VAC/60 HZ POWER, ONE SOLID STATE TRIAC FIELD SETTABLE NORMALLY OPEN OR NORMALLY CLOSED.

CUSTOMERS: CHEVRON USA, INC.
 SHIP TO: CHEVRON USA, INC., WICKETT, TEXAS
 P.O. NO.: PHAA-273471
 EST. SHIPPING WEIGHT: 92000⁴ PER UNIT

P.O. BOX 341		HAMMCO, INC		OWASO OGA	
ELEVATIONS					
DWG BY	CHK BY	DATE	APP BY	ITEM NO	DWG NO
LARRY	Ed	7-14-88	FEF	E-106, 107, 108	08-168-1

