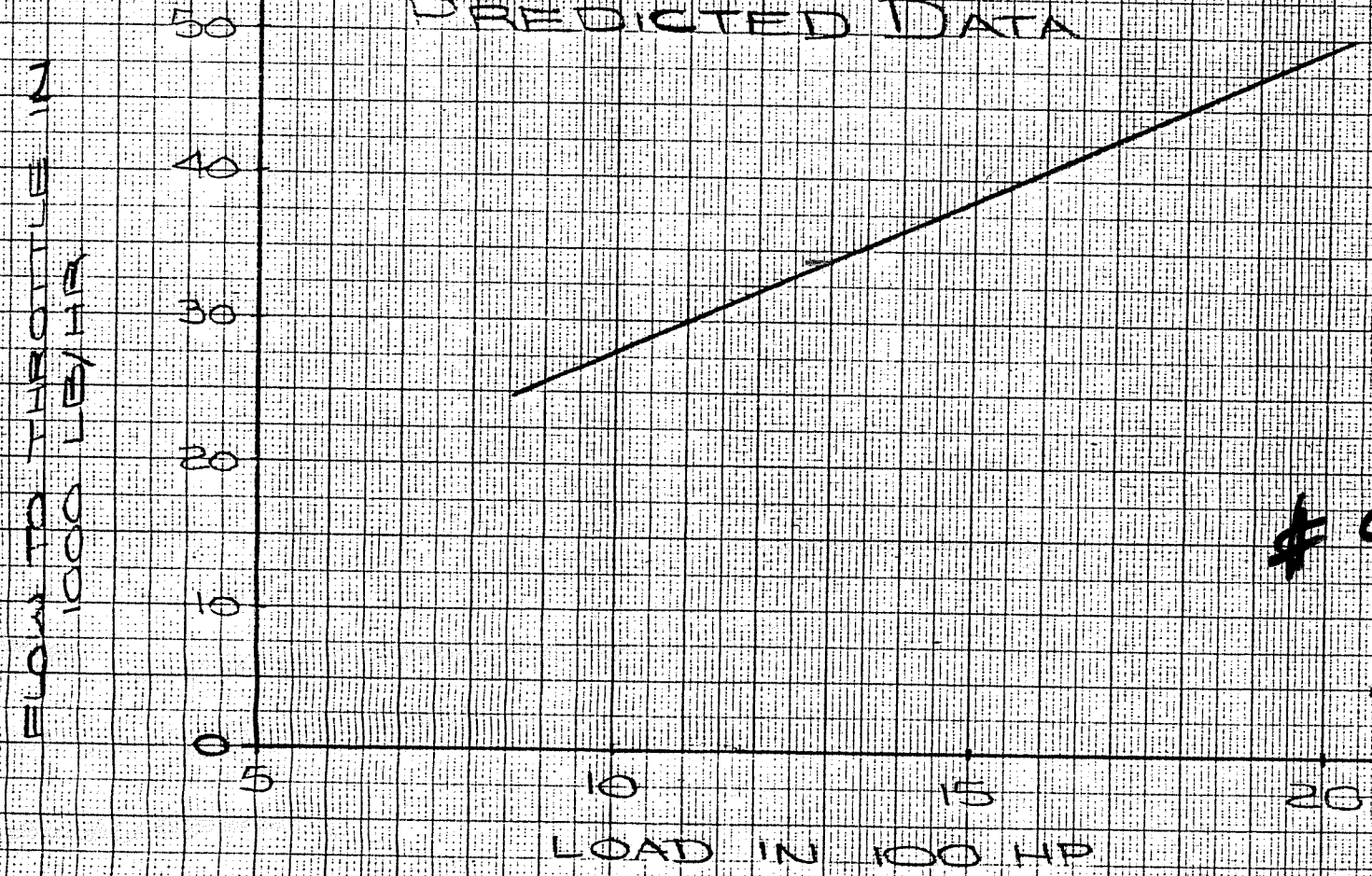


# FLOW VS. HORSEPOWER

S.D. 427128

TURBINE NO: 123186  
STEAM CONDITIONS: 65 PSIA - 750° FTT - 65 PSIA  
RATING: 1967 HP AT 4860 RPM

PREDICTED DATA



#90787

JL CORRADO  
12-1-82

PT-944 UPRATE 4/83

GENERAL ELECTRIC  
STEAM TURBINE

SERIAL NO.	123186	
MODEL	UY125R6	Inventory
RATING	11967dHP	MM Gals.
R.P.M.	4860	
// NOMINAL STEAM CONDITIONS		
INLET PRESS.	600/635MAX	PSIG
INLET TEMP.	750	FTT
EXHAUST PRESS.	50	PSIG
		GEK-5743



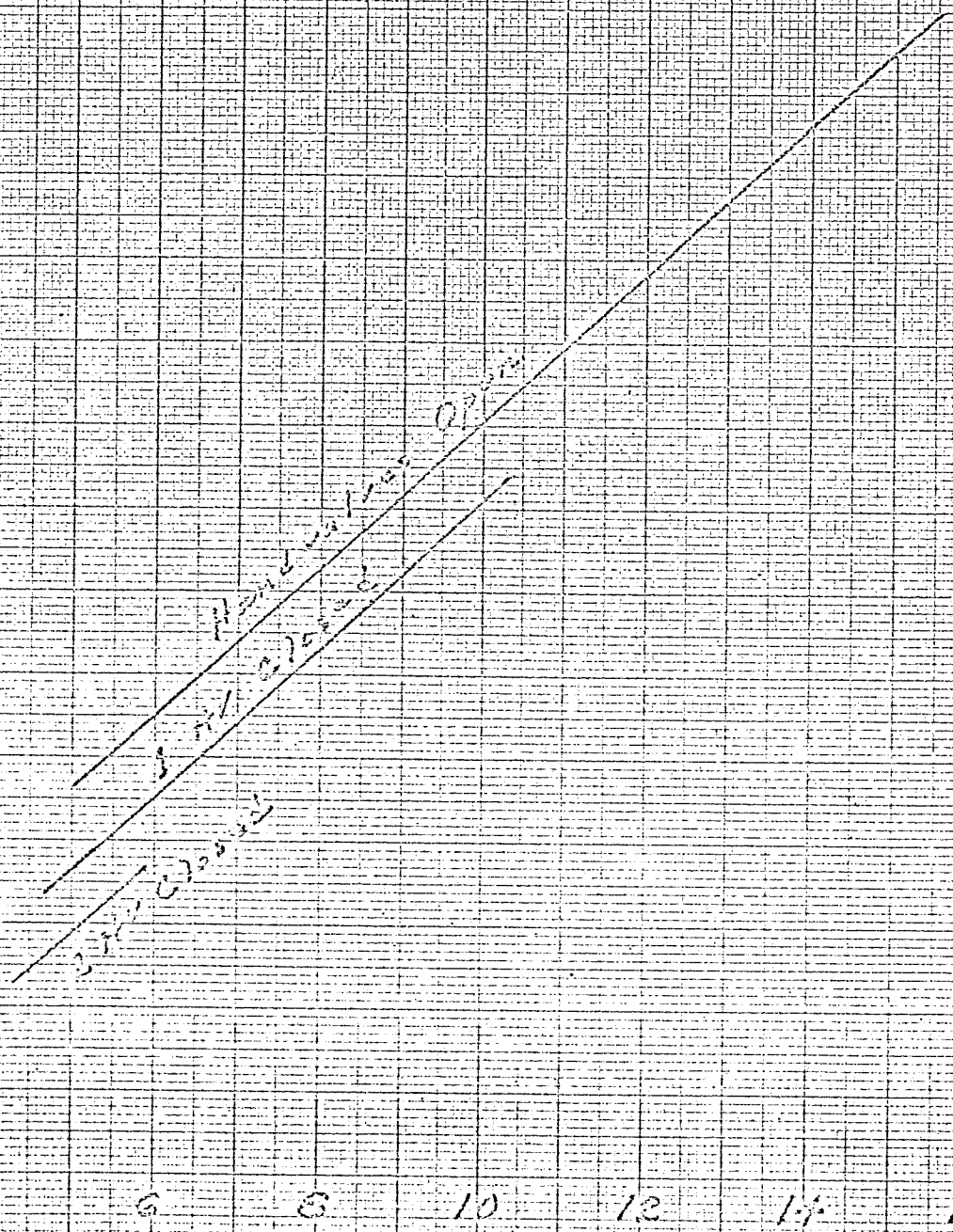
# 90787

Expected performance reduction all 100's, 100's  
 with hand valves added. No change  
 in color or size.

600 PSI @ 750°F - 40 PSI @

1000 HP @ 1000 PSI

35  
 30  
 25  
 20  
 15  
 10



HORSEPOWER 100's

25  
 10

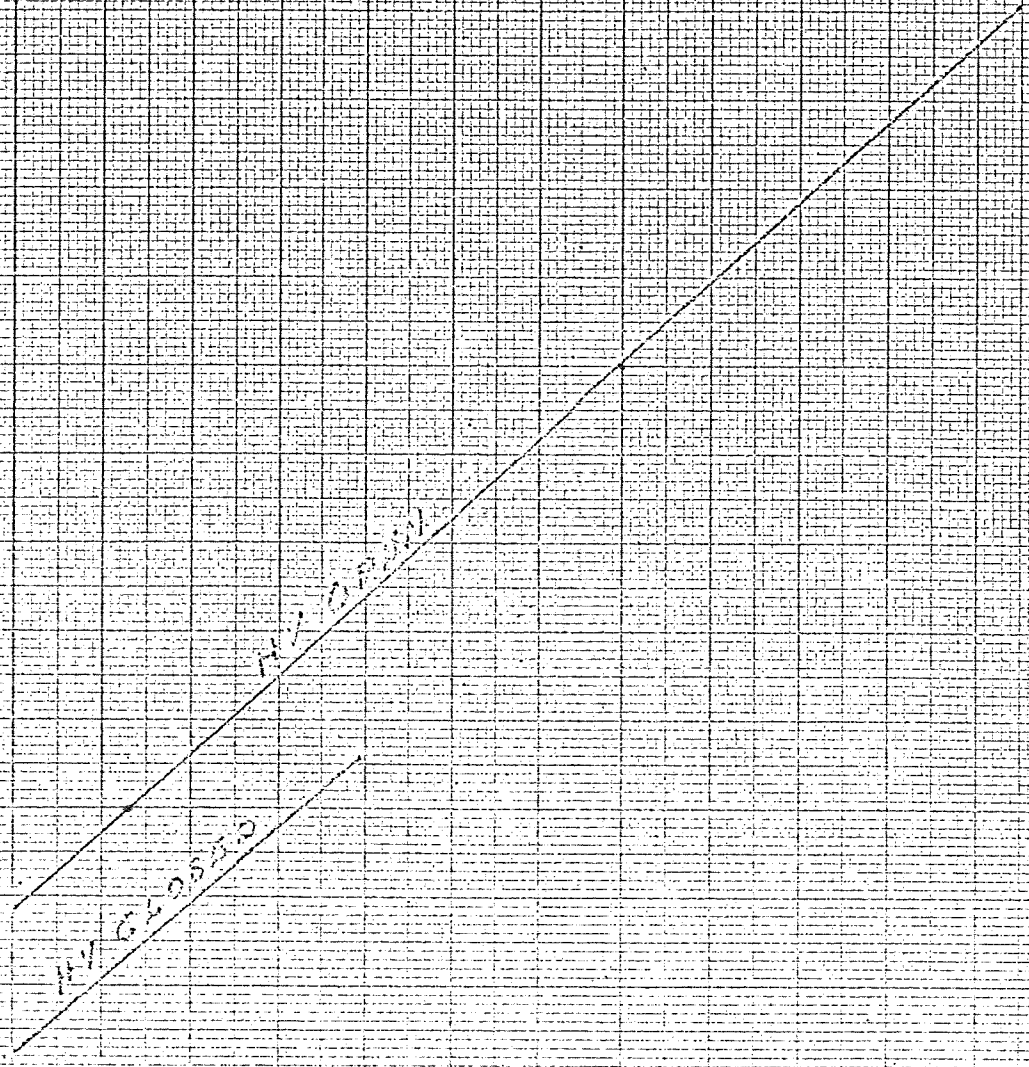
1/10  
 75 = 2400/100  
 75 = 2400

Expected performance section till 1935, 1936  
based on new 1/32 in. bushings, valves & valve seats

600 PSIG - 750°F - 40 PSIG

STEAM FLOW 1000 LBS/HR

30  
35  
40  
45  
50  
55  
60  
65  
70  
75  
80  
85  
90  
95  
100



HORSEPOWER, 100'S

10/17/35

2000 2286 #26