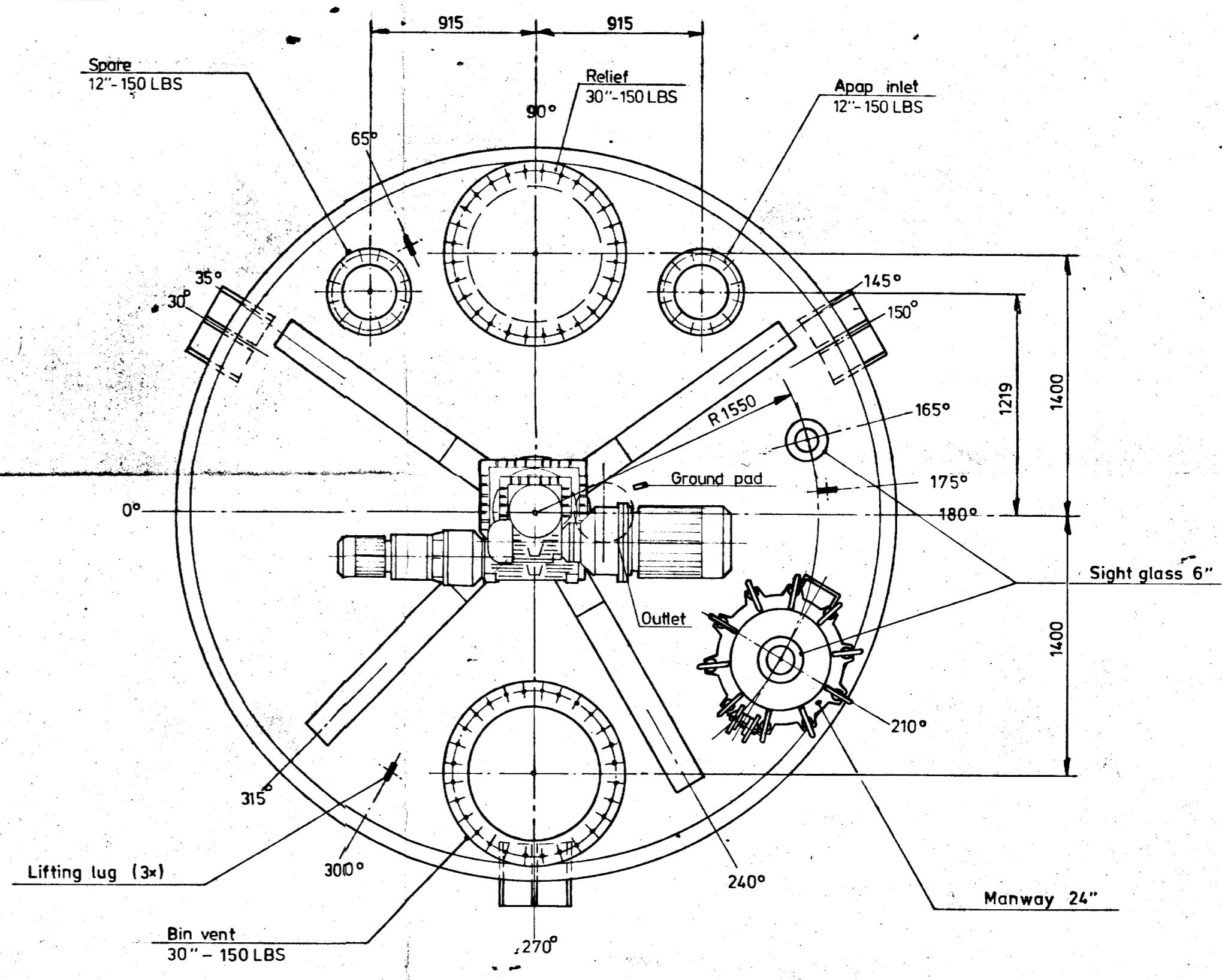
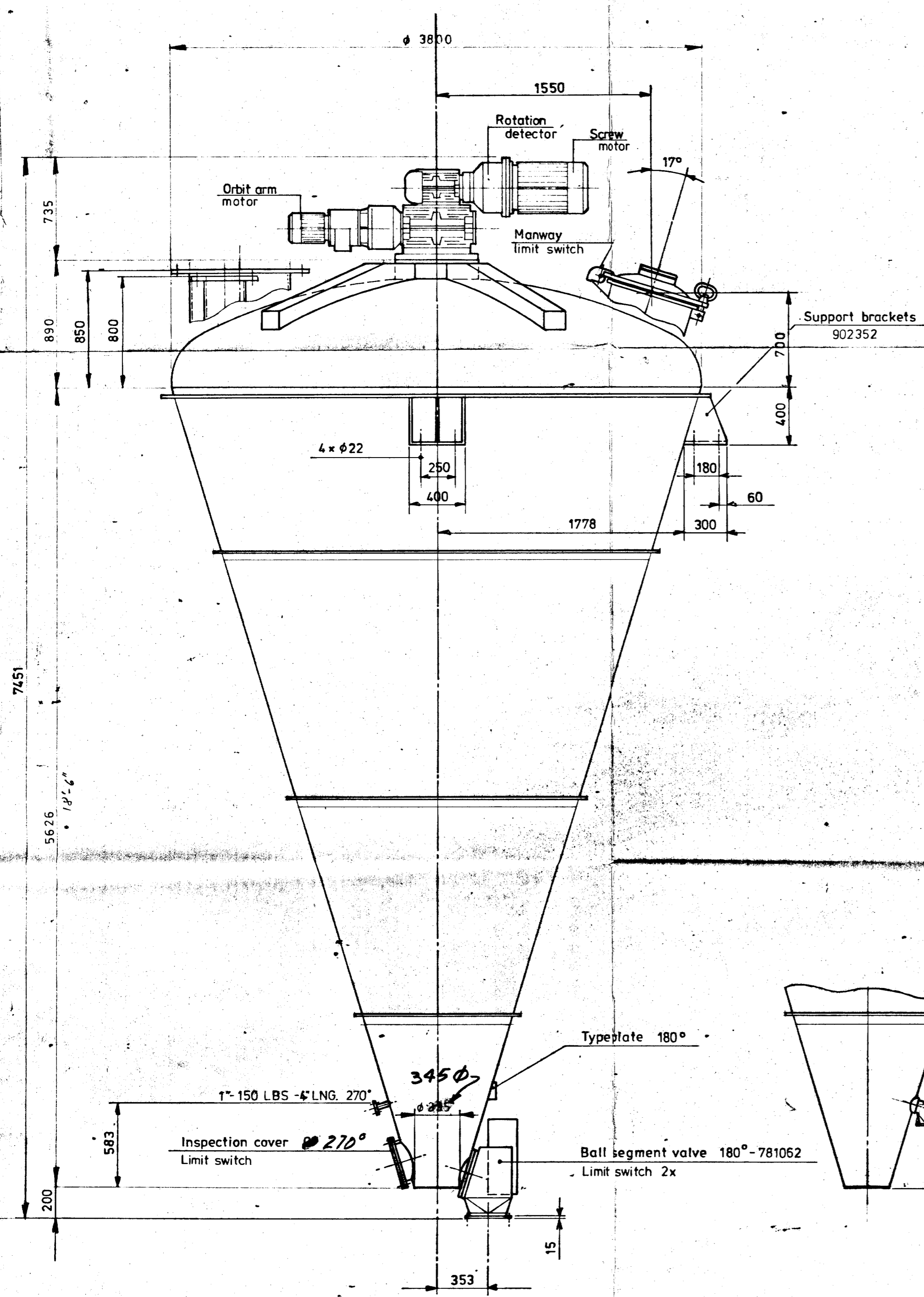


For the right location see top view

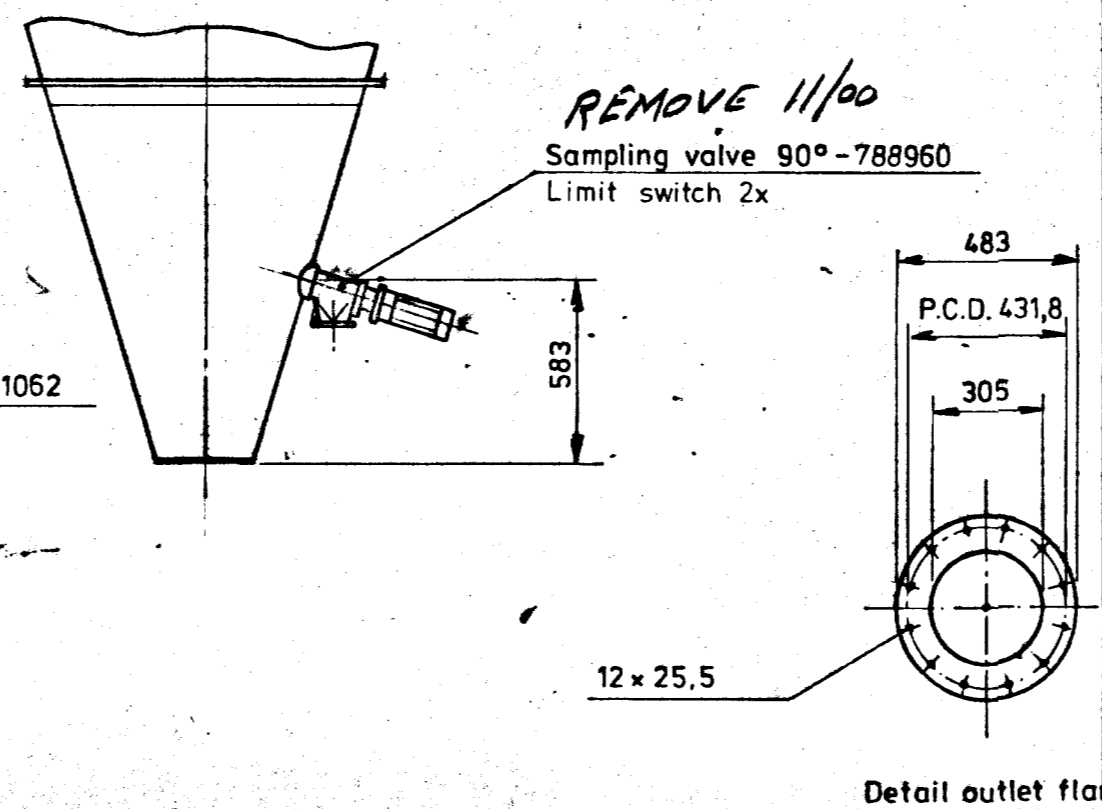


Design pressure : 45 PSIG for vessel + int.seals 9 PSIA
 Design temperature : 275°F
 ASME-code with US-stamp
 Mat. of constr. 304 SS
 Internal finish : 180 grit All welds ground smooth and flush to 180 grit
 Polish on screw 180 grit
 External finish : Polish with Scotch Brite
 Working capacity : 543 cu.ft. @ 25% F₇₃ x 543 ft³ = 13,575 ft³
 Motor Hp : 30 Screw
 3 Arm
 Unit to be shipped fully assembled
 Weight : ± 6500 kg

Customer : Hoechst Celanese
 Engineer : John Brown E & C
 Customer P.O. No. 050-40044-8
 J.B. REQ No. 86067-27.85
 Item No's MX-1205
 MS-1956

89935

Tolerances shall be in accordance with J.B. STD. SV 20



Schaal	1 25	Mat	Verv. uit	880929	
Get	J.B.	Mat	Verv. uit	880914	F.V.
Dat	880317	Opn	JAYGO-HOECHST	880530	
Get		REV.	Dat	Get	Get

OUTLINE DRAWING 150 RB-5

Auteursrechten volgens de wet voorbehouden
 MACHINEFABRIEK VRIECO ZELHEM B.V.
 ZELHEM - HOLLAND

Nr. 100944
 R.S. N. 8310061