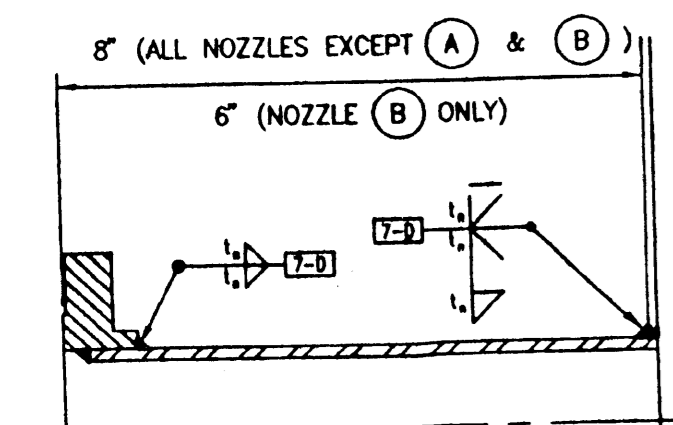
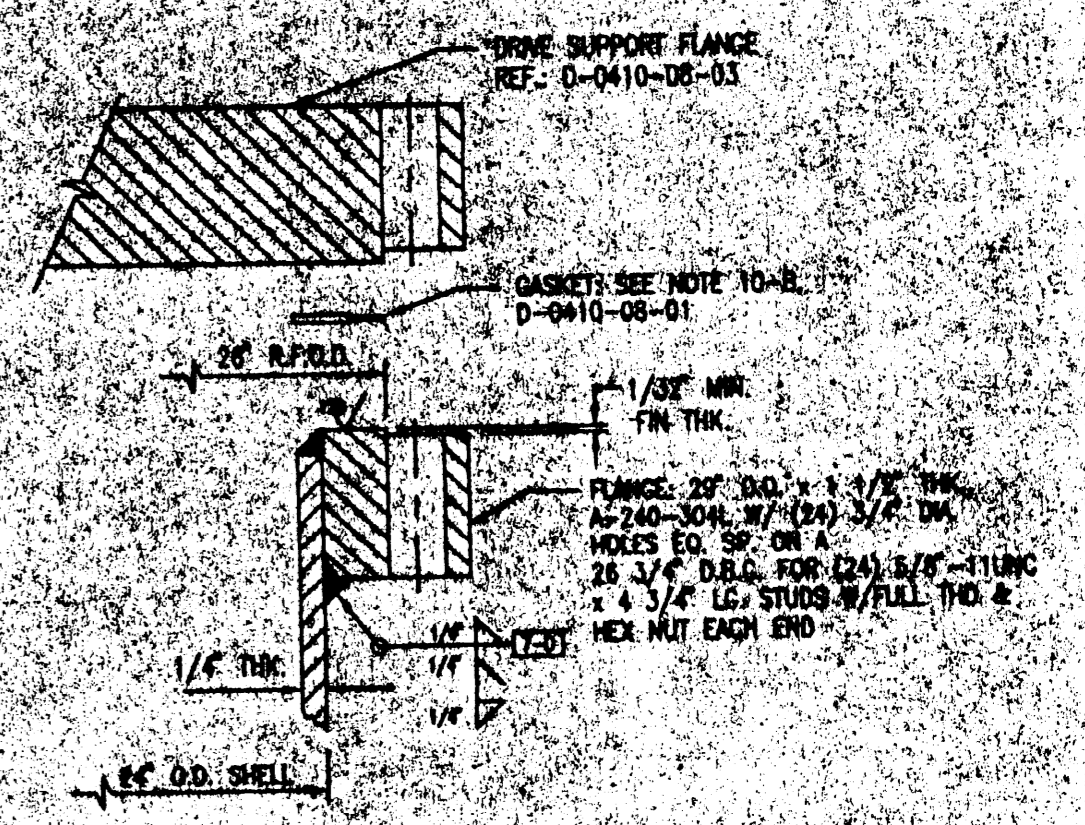
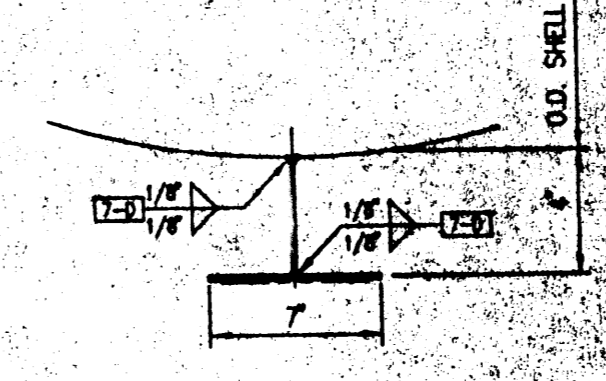
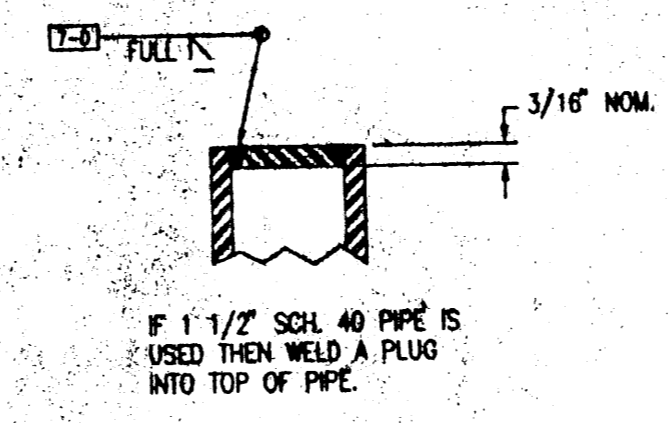
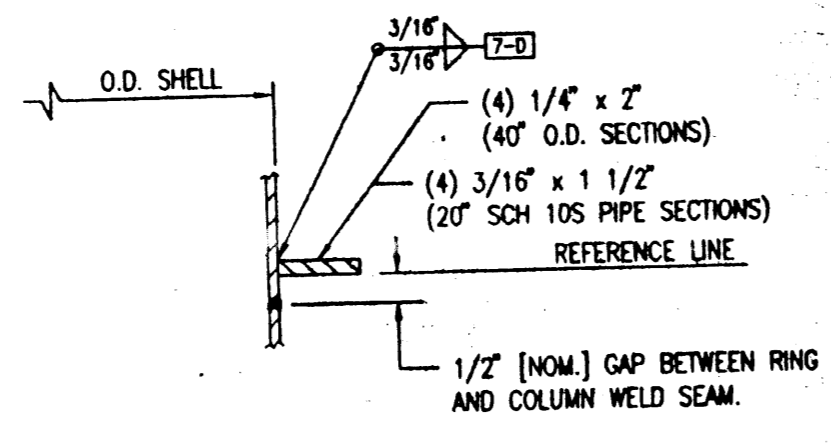
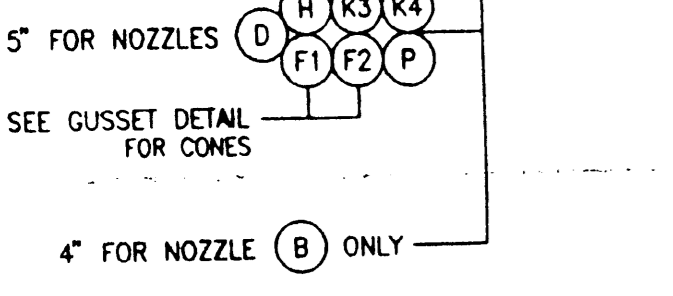
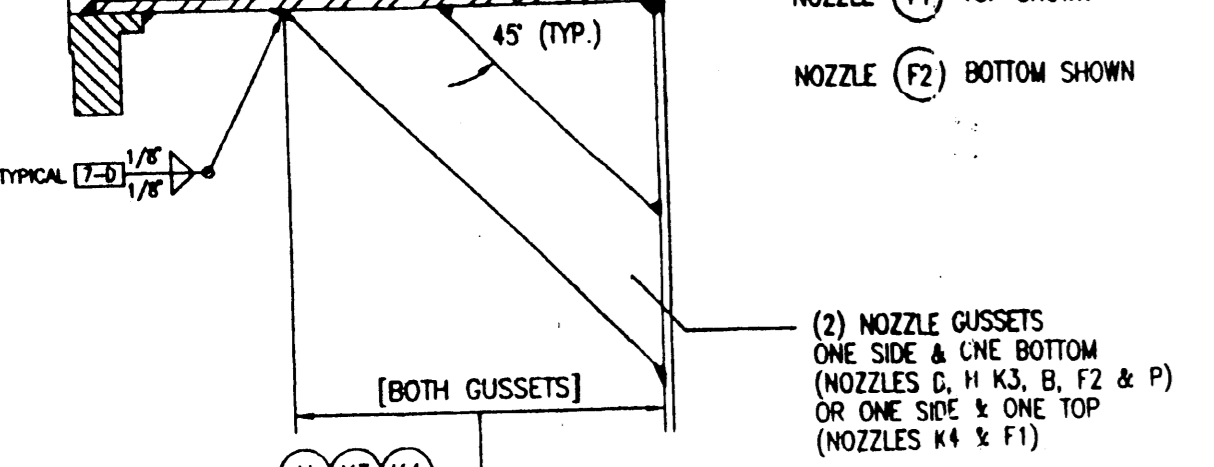


LONG WELD SEAM ORIENTATIONS

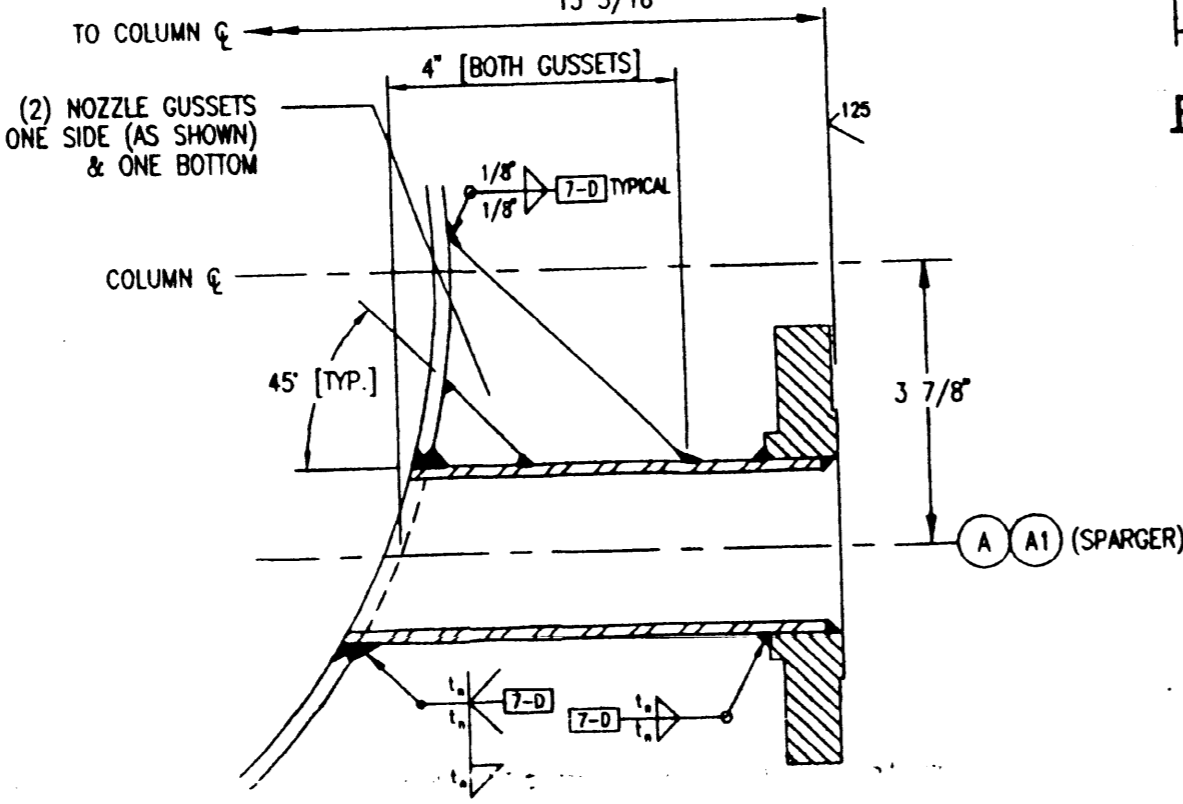
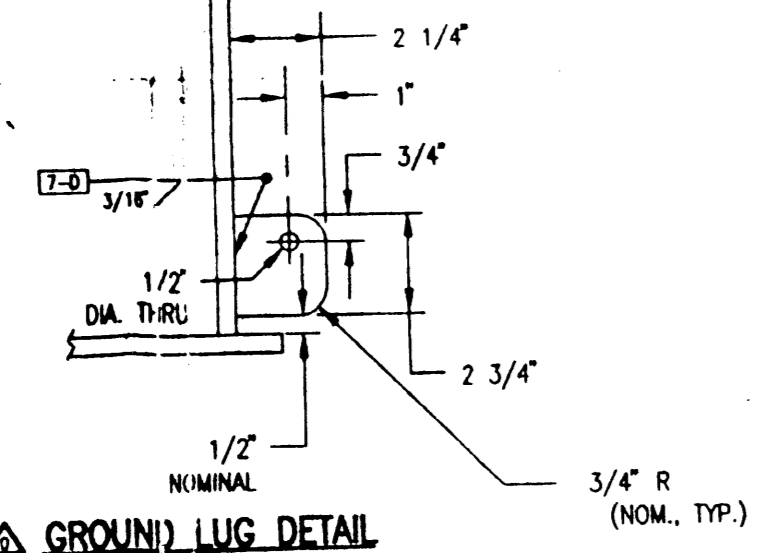


GUSSET DETAIL FOR CONES



TYPICAL NOZZLE WELD DETAIL
(EXCEPT NOZZLE A)

MATERIALS:
FLANGES: 150# R.F.S.O. SA-A182-F304L
NECKS: SCH 40 PIPE, SA-312-TP304L
GUSSETS: 1/4\"/>



NOZZLE WELD DETAIL - A

MATERIALS:
FLANGE: 2\"/>

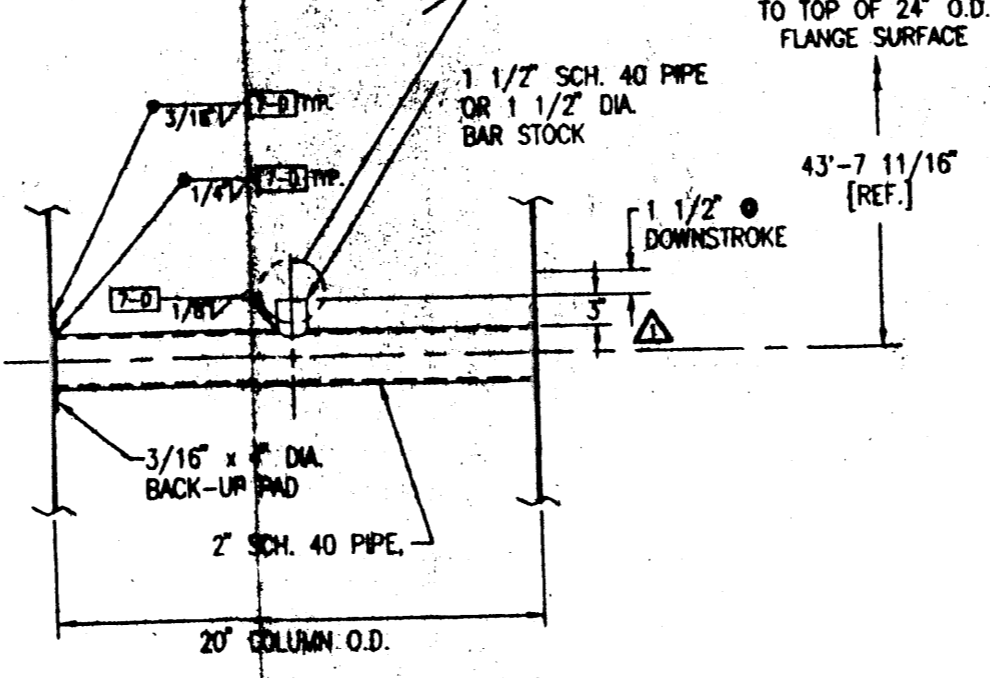
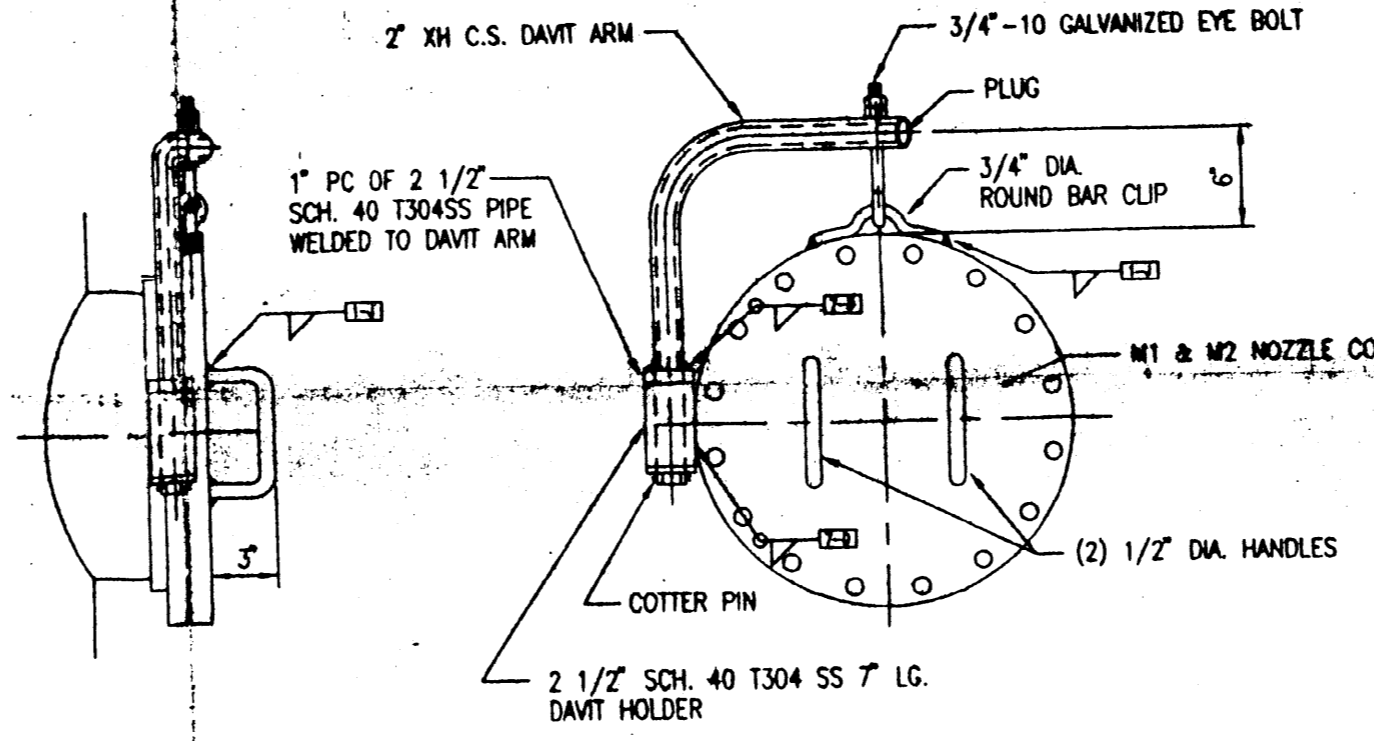


PLATE STACK SUPPORT DETAIL

MATERIAL: T304L SS
NOT TO SCALE



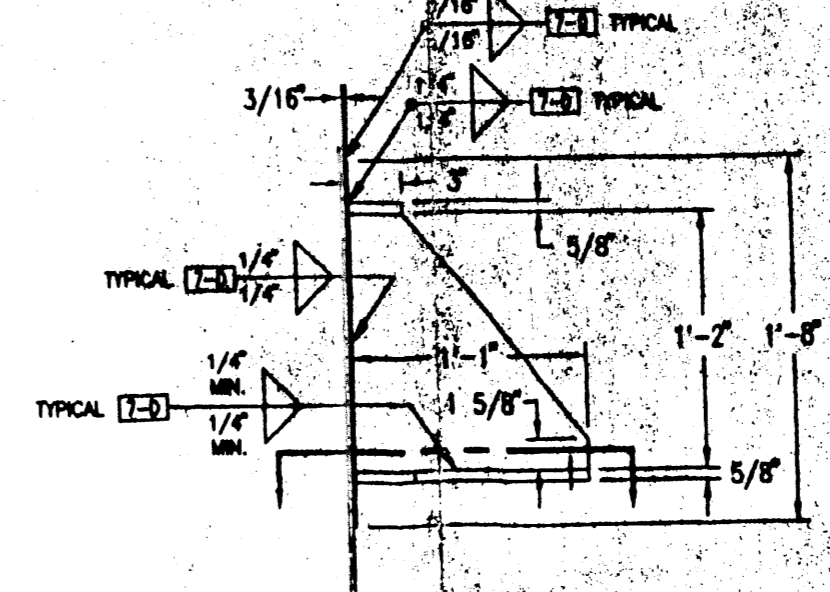
DAVIT ARM DETAIL

(NOT TO SCALE)
FOR M1 & M2

NAMEPLATE BRACKET DETAIL

SCALE: 1 1/2\"/>

(PLATES TO BE CENTERED ON BRACKET.)



SUPPORT LUG DETAIL

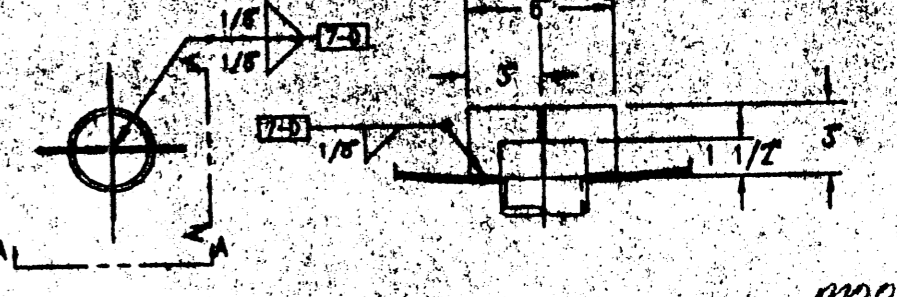
MATERIALS:
BELLY BAND: SA-240-304
W/ 1/2\"/>

(4) REQUIRED
SCALE: 3/8\"/>

TAILING LUG DETAIL

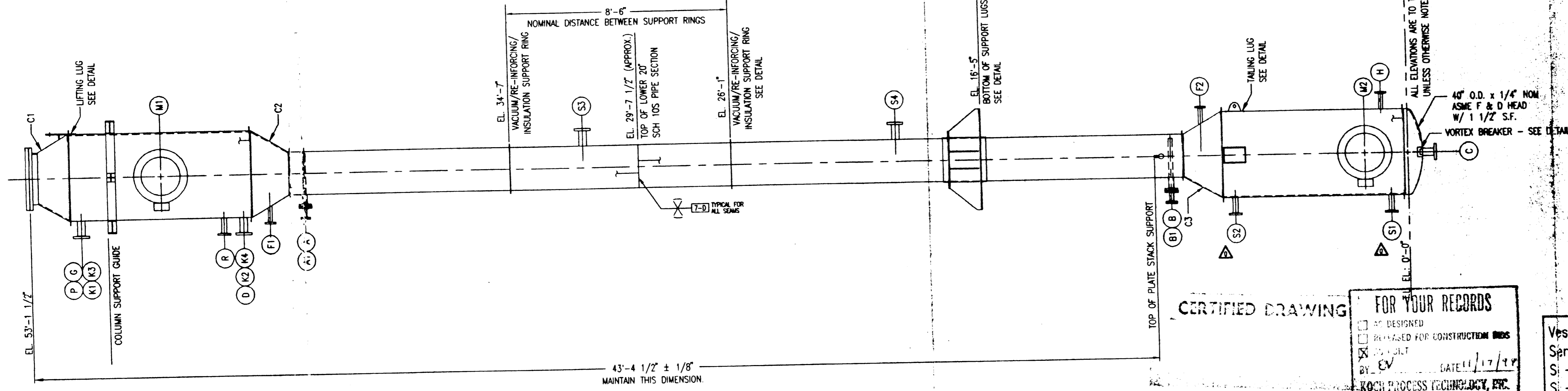
MATERIALS:
RE-PAD: SA-240-304
W/ 1/2\"/>

(1) REQUIRED
SCALE: 1/4\"/>



VORTEX DETAIL

MATERIALS: T304L SS
(1) REQUIRED
SCALE: 1/8\"/>



CERTIFIED DRAWING

FOR YOUR RECORDS

NOT DESIGNED
 REVISED FOR CONSTRUCTION CHGS
 AS BUILT
BY: EV DATE: 11/17/98
Koch Process Technology, Inc.

Vessel Tag Number: 123D-260
Service Name: Extractor
S + B Job Number: E4446
S + B P.O. Number: E4446-M0013
Client: Texas Eastman
Longview, Texas

REV.	DESCRIPTION	DATE	BY	APPROV
1	REVISED AS BUILT	11-13-98	EV	EV
0	REVISED ISSUED FOR CONSTRUCTION. ADDED GROUND LUG DETAIL, NOTE AND DIM (8'). CHANGED DIM: 7/8\"/>	8-3-98	W.E.C.	EV

CLIENT INFORMATION		JOB NUMBER	
PROJ. NO. E4446	PO. NO. E4446-M0013	E7-0410	DRAWING NUMBER
SCALE: 3/8\"/>	TEX PV Serial No.: 00-123-00-1669 Item No.: 123D-260 SAP No.: 70423288 Job No.: B2741	8-12-98	REV.

DATE	BY	APPROV
DESIGNED	DWG	DATE 5-7-98
DRAWN	WEC	DATE 8-12-98
CHECKED	E.V.	DATE 8-17-98
APPROVED	E.V.	DATE 8-17-98

# 87898	
20\"/>	
D-0410-08-02	
1	