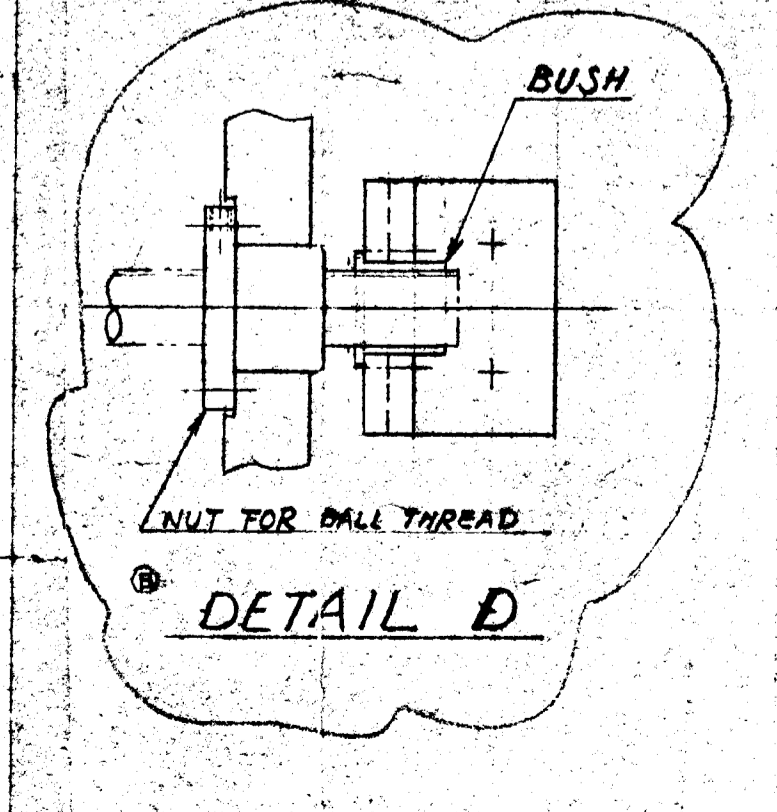
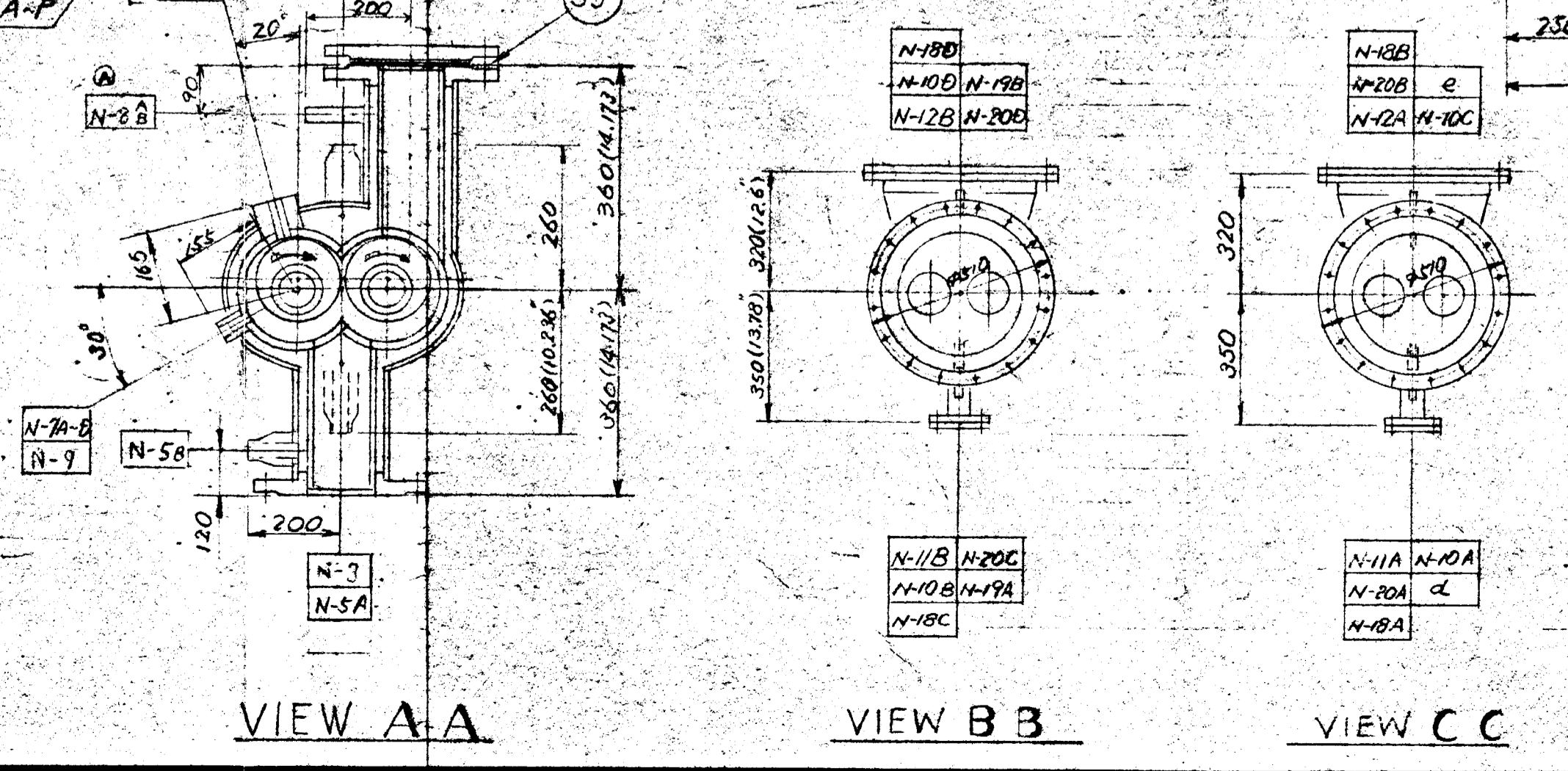
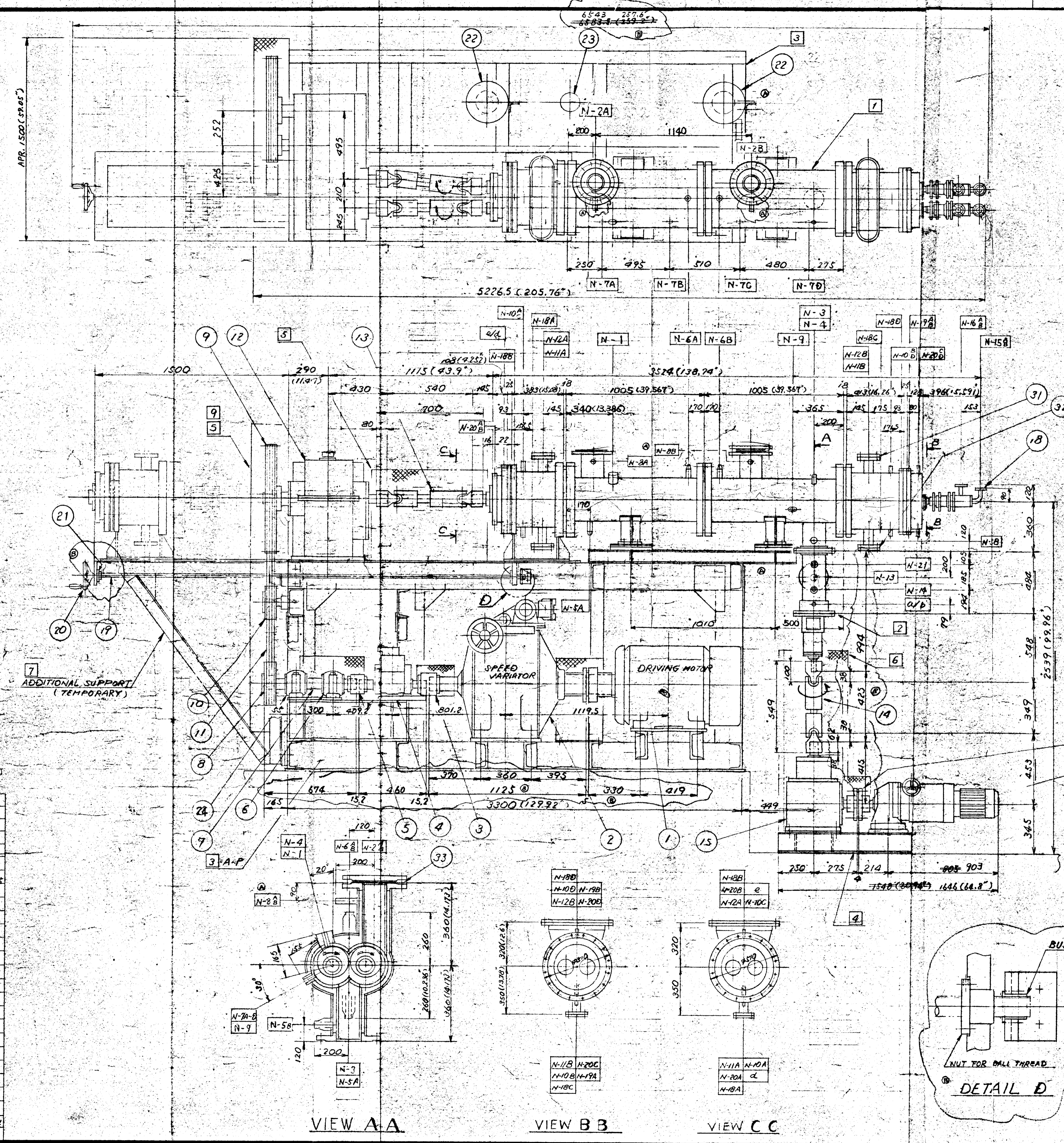
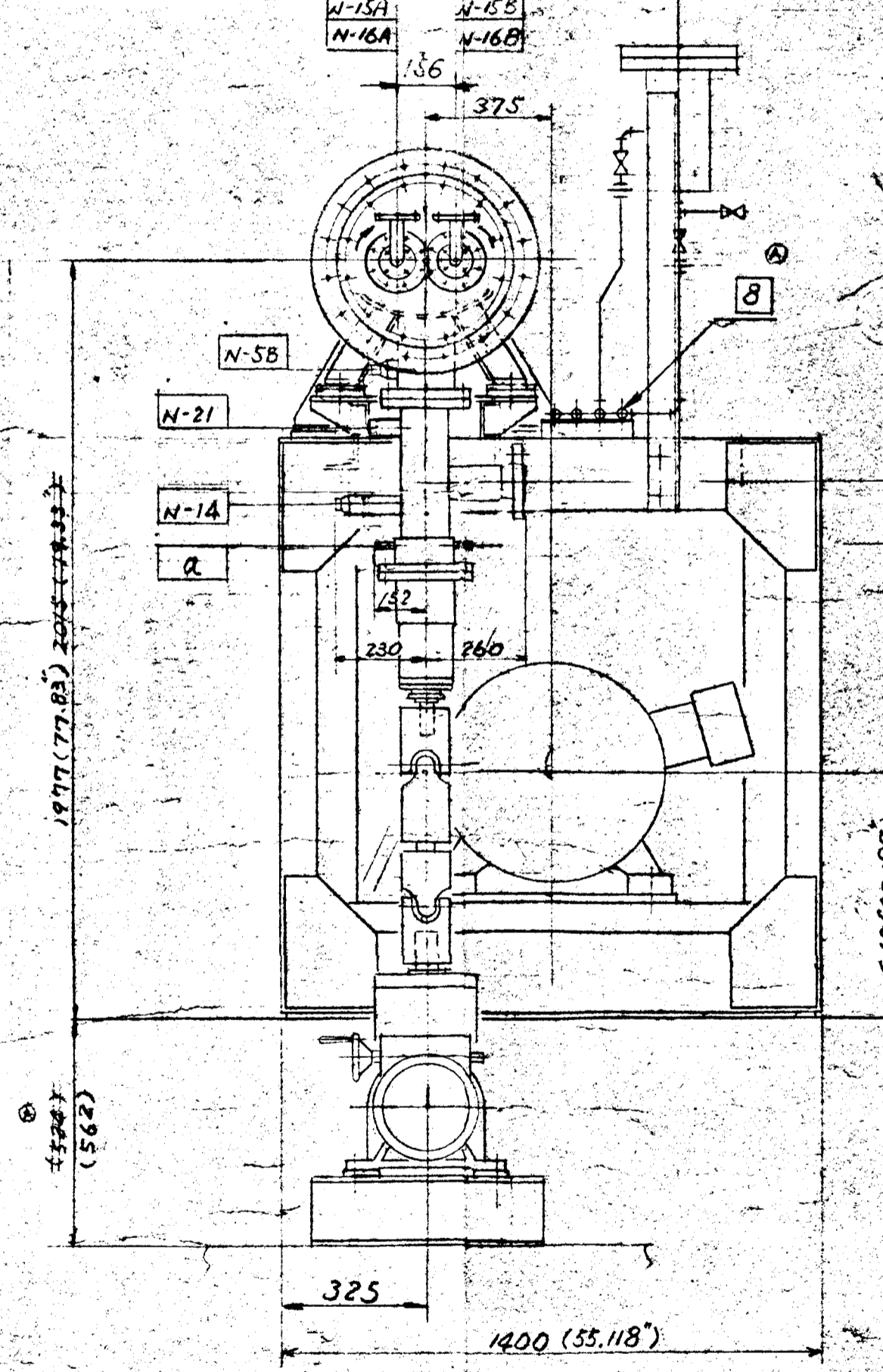


| MARK    | NO. | SIZE     | RATING | SERVICE               | REMARKS           | NOZZLE HEIGHT B.F. |
|---------|-----|----------|--------|-----------------------|-------------------|--------------------|
| d/2     | 2   | NPT 3/8" |        | LUB. OIL INLET        | 255               |                    |
| d/2     | 2   | NPT 3/8" |        | LUB. OIL OUTLET       | 152.5             |                    |
| N-21    | 1   | 1/4" B   |        | HOT OIL OUTLET        | REFER TO DWG.     |                    |
| N-20A-E | 4   | NPT 3/8" |        | C.W. INLET            | 200.0             |                    |
| N-19A-F | 2   | NPT 3/8" |        | LUBRICATING OIL INLET | 152.5             |                    |
| N-18A-D | 4   | NPT 3/8" |        | SEAL OIL INLET        | 152.5             |                    |
| N-18A-D | 4   | NPT 3/8" |        | SEAL OIL OUTLET       | 152.5             |                    |
| N-16    | 2   | 3/4" B   |        | HOT OIL OUTLET        | REFER TO DWG.     |                    |
| N-15    | 2   | 1/2" B   |        | HOT OIL INLET         |                   |                    |
| N-14    | 1   | 3/4" B   |        | HOT OIL INLET         | STUB END          |                    |
| N-13    | 1   | 3/4" B   |        | POLYMER OUTLET        | W/JACKET          |                    |
| N-12    | 2   | 5/8" B   |        | HAND HOLE             | BLIND FLANGE      |                    |
| N-11    | 2   | 2" B     |        | DRAIN                 | WITH BLIND FLANGE |                    |
| N-10A-D | 4   | NPT 1/2" |        | C.W. INLET            | 280               |                    |
| N-9     | 1   | SPECIAL  |        | PRESS. GAUGE          | REFER TO DWG.     |                    |
| N-8     | 2   | 1/2" B   |        | AIR VENT              | STUB END          |                    |
| N-7A-D  | 4   | SPECIAL  |        | TEMP GAUGE            |                   |                    |
| N-6     | 2   | 2" B     |        | HOT OIL OUTLET        | STUB END          |                    |
| N-5     | 2   | 2" B     |        | HOT OIL INLET         | STUB END          |                    |
| N-4     | 1   | 1/2" B   |        | ADDITIVE INLET        | FLD INLET         |                    |
| N-3     | 1   | 1/2" B   |        | POLYMER OUTLET        | W/JACKET          |                    |
| N-2     | 2   | 1/2" B   |        | VENT                  | W/JACKET          |                    |
| N-1     | 1   | 1" B     |        | FEED INLET            | PAR. NOZZLE       |                    |



| Principal Items     |  |
|---------------------|--|
| Type of Machine     | SCR                                    |
| Fluid Name          | Dupon Polyacrylate (S.G. 1.0)          |
| Viscosity           | ~ 15000 cP @ 25°C                      |
| Design Pressure     | 10.5 kg/cm <sup>2</sup> Head           |
| Operating Pressure  | 0.5 kg/cm <sup>2</sup> Head            |
| Operating Temp.     | 300°C                                  |
| Hydro-Test Pressure | 15.8 kg/cm <sup>2</sup> Head           |
| Leak Test Pressure  | 15.8 kg/cm <sup>2</sup> Head           |
| Seal Fluid          | Mineral Oil                            |
| Motor               | Electric Source: 480 V 3 Ph 3 W        |
| Control System      | Variable                               |
| Speed               | Revolutions/Min: 900                   |
| Reducer             | Transmission Power: 37 hp @ 270 r.p.m. |
| Inducer             | Transmission Torque: Max 400 kg-m      |



| THIRD ANGLE PROJECTION |      | PLAN RECORD |      |
|------------------------|------|-------------|------|
| ORDER                  | ITEM | ORDER       | ITEM |
| 1. REV. 0              |      | 1. REV. 0   |      |
| 2. REV. 0              |      | 2. REV. 0   |      |

| QTY | ITEM NO. | DESCRIPTION                   | MATERIAL | UNIT | REMARKS |
|-----|----------|-------------------------------|----------|------|---------|
| 2   | 1        | GASKET (ANSI 300 LB)          | 1/4" 316 |      |         |
| 4   | 2        | GASKET (ANSI 300 LB)          | 1/4" 316 |      |         |
| 4   | 2        | O-RING G-300                  | RUBBER   |      |         |
| 1   | 24       | 3/8" RUBBER BLOCK             | 316/304  |      |         |
| 1   | 23       | OIL POT                       | 316      |      |         |
| 1   | 22       | SEAL POT                      | 316      |      |         |
| 1   | 21       | BEARING                       | UCPL 305 |      |         |
| 1   | 20       | HANDLE NO. 200                | 316      |      |         |
| 1   | 19       | BALL BEARING                  | 6208     |      |         |
| 1   | 18       | ROTOR YOUNT VARIABLE          | DR 225   |      |         |
| 1   | 17       | GEARED MOTOR                  | MAN 516  |      |         |
| 1   | 16       | COUPLING                      | FC 224   |      |         |
| 1   | 15       | GEAR BOX                      | FRM-48   |      |         |
| 1   | 14       | UNIVERSAL JOINT               | SPB-35   |      |         |
| 1   | 13       | UNIVERSAL JOINT               | SPB-60   |      |         |
| 1   | 12       | SPEED REDUCER                 | SV 180   |      |         |
| 1   | 11       | V-BELT                        | SV 180   |      |         |
| 1   | 10       | V-PULLEY                      | 250-5V   |      |         |
| 1   | 9        | V-PULLEY                      | 315-5V   |      |         |
| 1   | 7        | SHAFT (200)                   | 316      |      |         |
| 1   | 6        | FLUSHER BLOCK                 | 316      |      |         |
| 1   | 5        | CHAIN COUPLING                | 8018     |      |         |
| 1   | 4        | TORQUE METER                  | TR-501   |      |         |
| 1   | 3        | CHAIN COUPLING                | 8072     |      |         |
| 1   | 2        | SPEED VARIATOR                | 75TK     |      |         |
| 1   | 1        | DRIVING MOTOR                 | 2800M    |      |         |
| 1   | 9        | SAFETY COVER ARRANGEMENT BING |          |      |         |
| 1   | 8        | SAFETY COVER ARRANGEMENT BING |          |      |         |
| 1   | 7        | ADDITIONAL SUPPORT            |          |      |         |
| 1   | 6        | SAFETY COVER FOR EXTRUDER     |          |      |         |
| 1   | 5        | SAFETY COVER COMMON BED       |          |      |         |
| 1   | 4        | SAFETY COVER COMMON BED       |          |      |         |
| 1   | 3        | FOR SCR ASSEMBLY              |          |      |         |
| 1   | 2        | FOR EXTRUDER                  |          |      |         |
| 1   | 1        | ASSEMBLY FOR SCR              |          |      |         |

APPROVED: [Signature] DATE: [Date]  
 MITSUBISHI HEAVY INDUSTRIES, LTD.  
 HIROSHIMA MACHINERY WORKS  
 SCALE: 1/4" = 1'-0"  
 400 430-12411