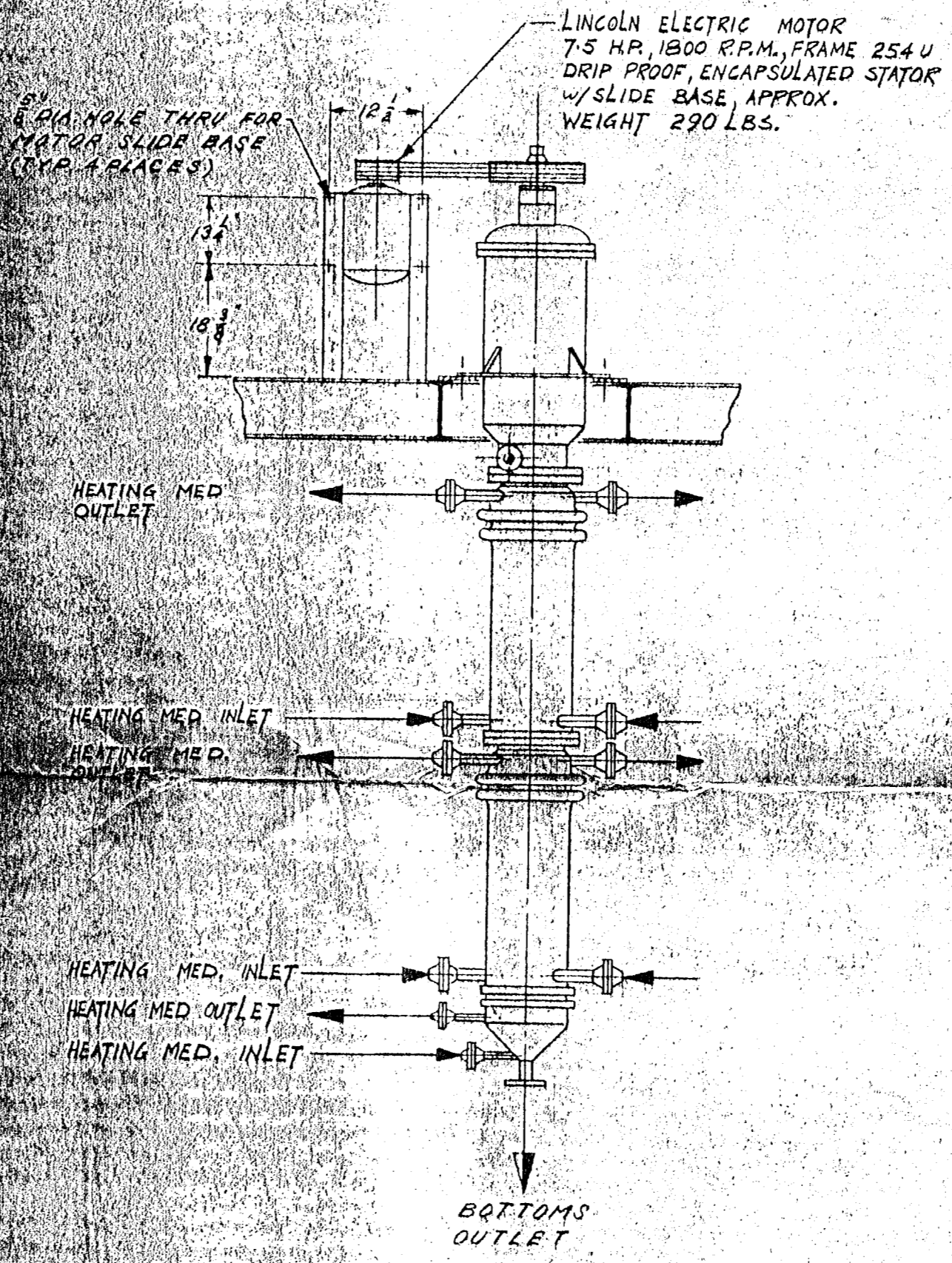
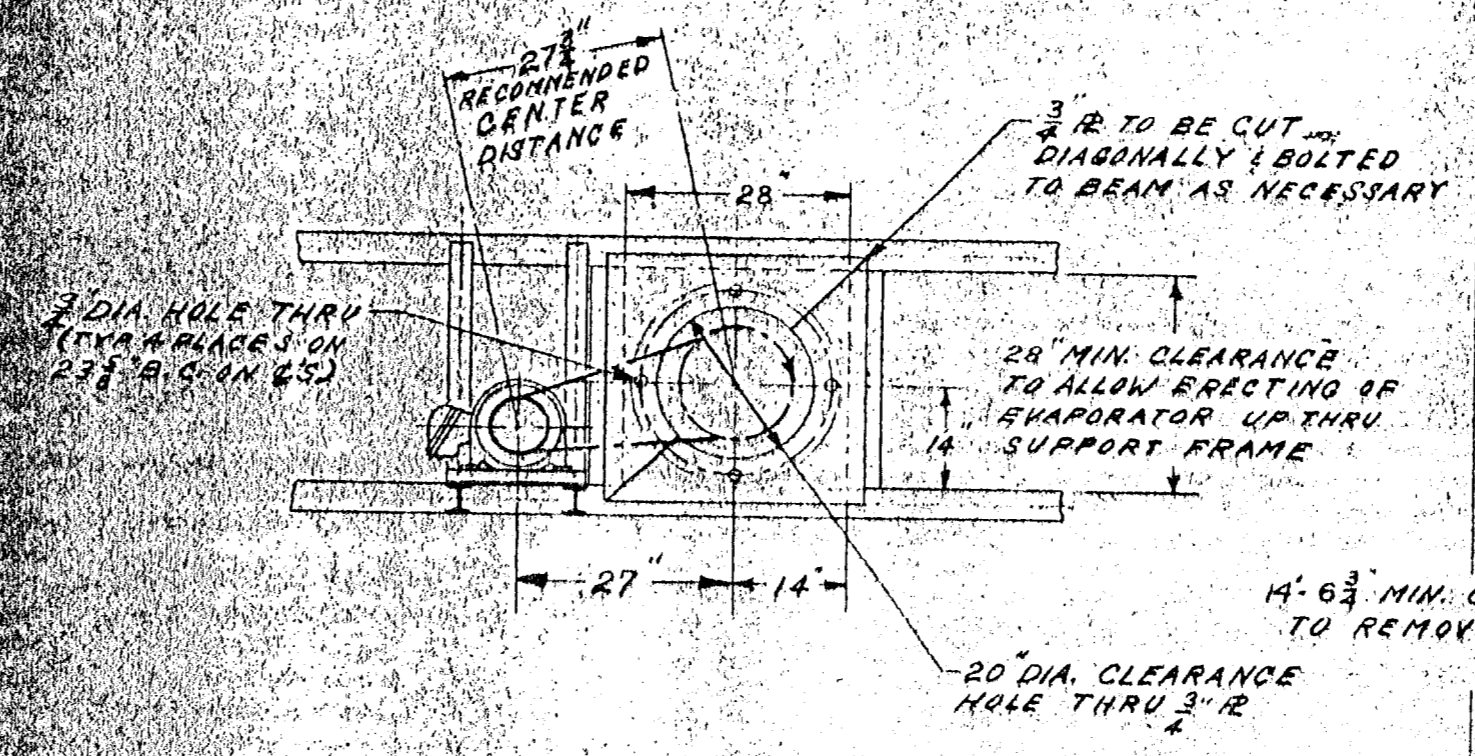
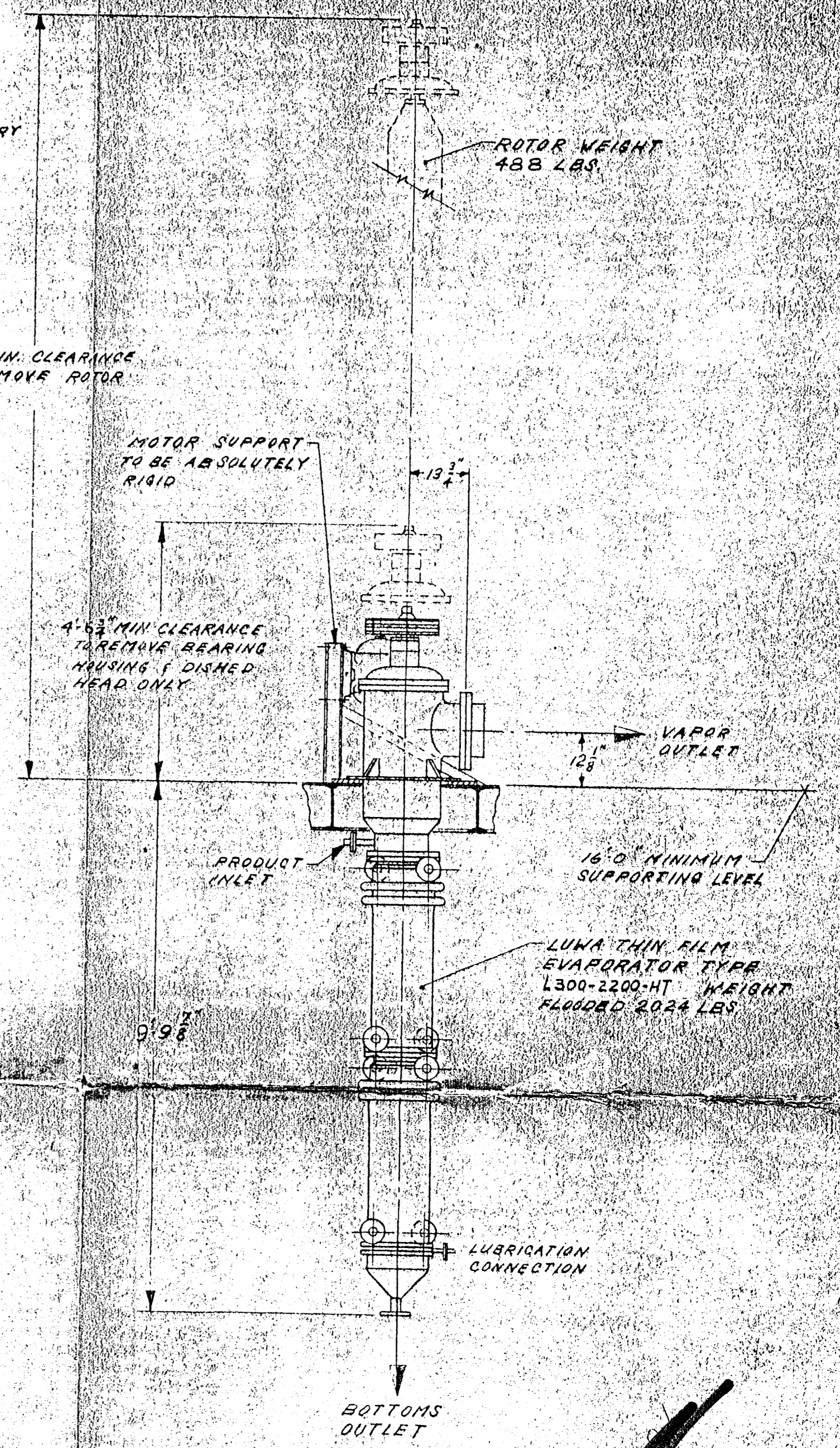


PIPING SCHEMATIC
AND FLOW SHEET
FOR L-300-2200-HT

NOTE:
NUMBERS IN HEXAGONS
REFER TO BILL OF MATERIAL
NUMBERS.



NOTE:
SEE DWG. S.0.799-2CA FOR
SIZE, NOZZLE ORIENTATION,
AND OUTLINE DIMENSIONS
OF LUWA EVAPORATOR



STRUCTURAL ARRANGEMENT
FOR LUWA EVAPORATOR & MOTOR

72761

#1 LUWA

MONSANTO COMPANY		Order No. 9880-9-3277
CENTRAL ENGR. DEPT.		Project (CEA) No. 9880
Location: E St. Louis	Area: 600	
Equipment No. 667,000	667,500	
Description:		
Reviewed by: <i>Chas. G. ...</i>	Date: 9/16/67	
<input type="checkbox"/> Major Corrections noted	<input checked="" type="checkbox"/> Leave as Shown	<input type="checkbox"/> Final

TITLE: PIPING SCHEMATIC AND STRUCTURAL ARRANGEMENT FOR TYPE L-300-2200-HT	BY: DGL	DATE: 1-19-67	CHANGE: A	DATE: 7-22-67	REASON: RELEASED
DWG. NO. S.0.799-4DB	SCALE: 1/4" = 1'-0"		B		
			C		

THIS DRAWING IS THE PROPERTY OF LUWA CORP. AND IS LOANED FOR CONFIDENTIAL USE ONLY AND SHOULD NOT BE COPIED OR USED FOR ANY PURPOSE DETRIMENTAL TO THE INTEREST OF LUWA CORP.