

**DIMENSIONS - NASH VACUUM PUMP**

TYPE  N.C. - PULLEY DRIVE CAST BODY

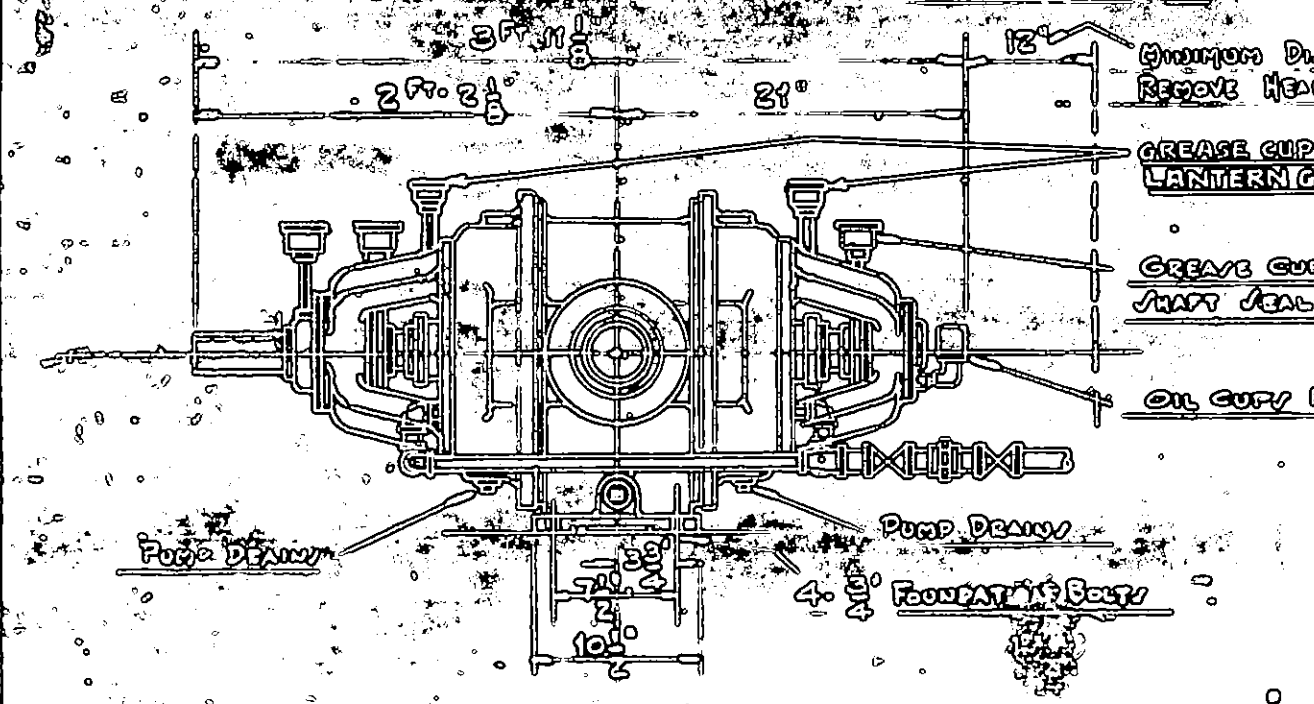
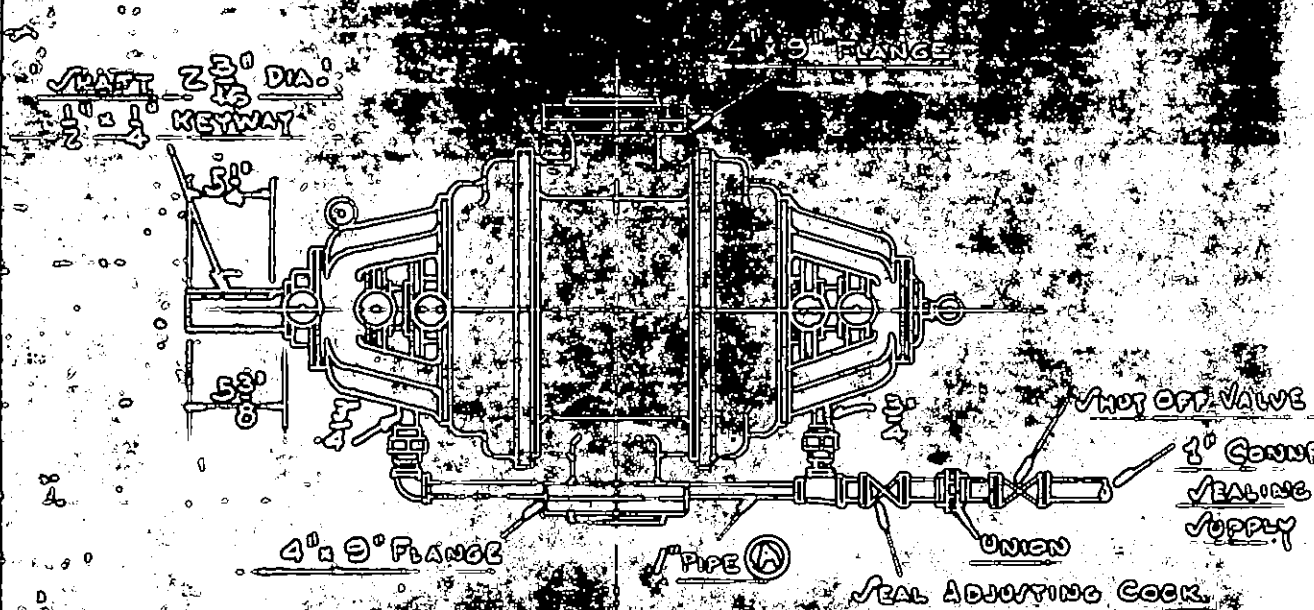
DATE	BY	DATE	BY
8-28-53	W.F.	8-28-53	W.F.
REVISION NO.			
1			

W.F. 4-83

NASH ENGINEERING CO.  
SO. NORWALK, CONN., U.S.A.

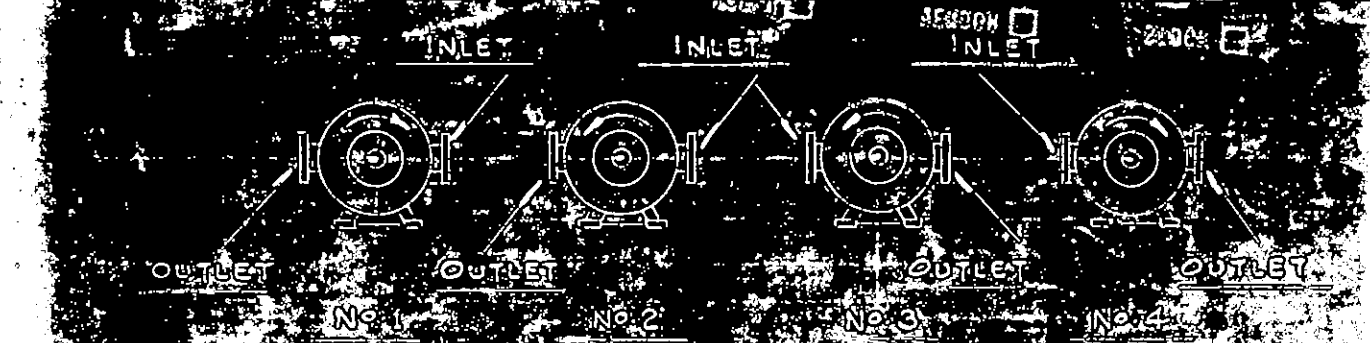
DO NOT SCALE. REFER TO DIFFERENCES TO ENG. DEPT. FINISHED FRACTIONAL DIMENSIONS MAY VARY.

S.O. R. 96855



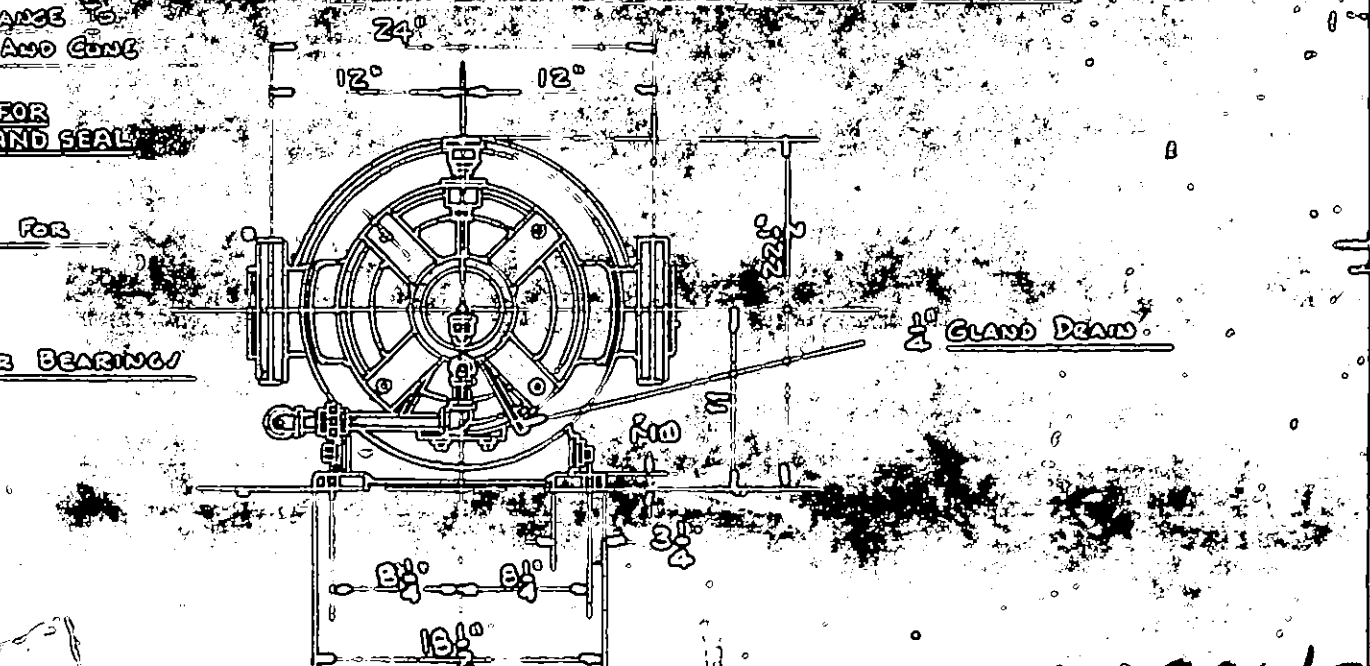
PUMP FLANGES - AMER. STD. 129-507 - NOT FURNISHED

E	WAS	LOC	BY	P		L													
A	3/2"	3/2"	3/2"	G		M													
B				M		N													
C				I		O													
D				J		P													
E				K		Q													



ASSEMBLIES FACING DRIVE END. ASSEMBLY NOS WILL BE FURNISHED UNLESS OTHERWISE SPECIFIED.

NOTE: A DAY NOT QUANTIFY DRAWING FOR INSTALLATION ONLY. CERTIFIED FOR YOUR ORDER. SEAL ADJUSTING COCK FURNISHED BY NASH ENG CO. ALL OTHER PIPES, VALVES, FITTINGS AND FOUNDATION BOLTS NOT FURNISHED BY NASH ENG CO.



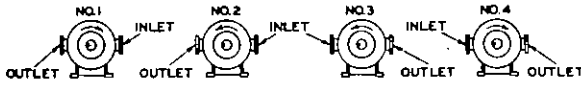
60984/3

NASH ENGINEERING COMPANY, SOUTH NORWALK, CONN.

DIMENSION PRINT - NASH HYTOR VACUUM PUMPS

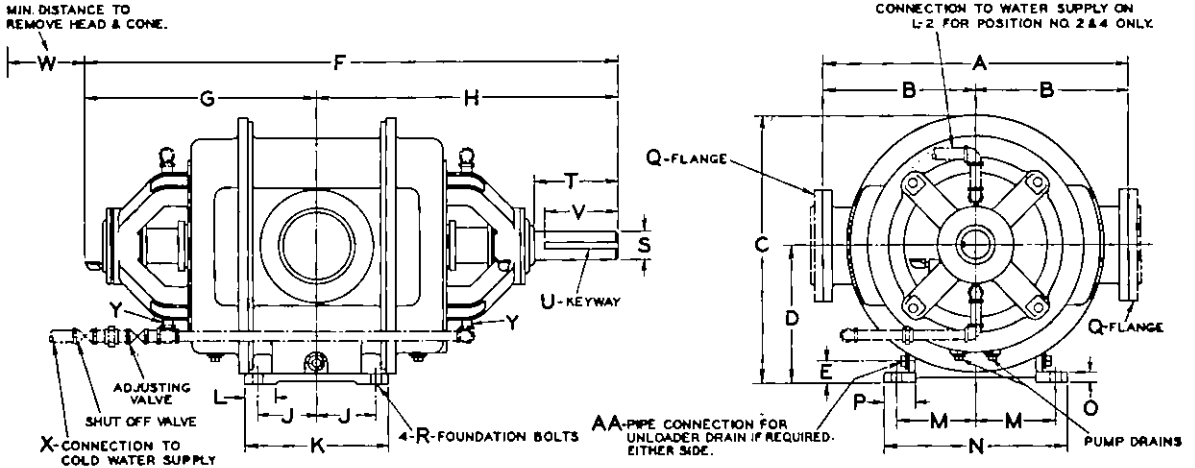
SIZES K3, K4, K5-L2, L3, L4, L5, L6-H3, H4, H5, H6, H7-BELT DRIVE

SUBJECT TO CHANGE WITHOUT NOTICE; SUPERSEDES ALL PREVIOUS DIMENSION SHEETS; CERTIFIED PRINTS SHOULD BE USED FOR INSTALLATION.



ASSEMBLY DIAGRAMS FACING DRIVE END.  
ASSEMBLY NO.1 WILL BE FURNISHED, UNLESS OTHERWISE SPECIFIED.  
H-SERIES PUMPS AVAILABLE IN POSITIONS 1 & 3 ONLY

NOTE:-  
DO NOT USE THIS DRAWING FOR INSTALLATION UNLESS CERTIFIED CORRECT FOR YOUR ORDER.  
PIPING, VALVES, FITTINGS & COMPANION FLANGES SHOWN IN DOT-DASH LINES & FOUNDATION BOLTS ARE NOT FURNISHED BY NASH ENG. CO.  
ADJUSTING VALVE IS FURNISHED BY NASH ENG. CO.  
PUMP FLANGES ARE AMER. STD. FOR 125 LBS.  
COMPANION FLANGES FURNISHED FOR SIZES L2-H3, L3-H4 & K3-L4 -H5 ONLY.



PUMP SIZE	PUMP & BASE DIMENSIONS (IN INCHES)														
	PUMP DIMENSIONS								BASE DIMENSIONS						
	WIDTH		HEIGHT			LENGTH									
	A	B	C	D	E	F	G	H	J	K	L	M	N	O	P
L-2 H-3	11-1/2	5-3/4	10	5	1-5/16	22-1/8	9-5/8	12-1/2	1-7/16	4-1/8		3-3/8	8	1/2	1-1/4
L-3 H-4	13-1/2	6-3/4	11-3/4	6	1-5/16	26-7/8	11-3/4	15-1/8	2-3/32	5-7/16		4-1/16	9-1/2	5/8	1-3/8
K-3 L-4 H-5	18	9	15-1/2	7-3/4	1-3/4 1-13/16	33-5/8	15-1/2	18-1/8	2-5/8	7-1/8		5-1/4	12	5/8	2
K-4 L-5 H-6	24	12	21	11	2-1/8	44-1/4	19-3/4	24-1/2	3-3/4	10-1/2	3-1/4	8-1/8	18-1/2	7/8	2-7/8 3-1/4
K-5 L-6 H-7	28-1/2	14-3/4	25-3/4	13-1/2	2-1/2	50-1/8	21-7/8	28-1/4	5-1/2	13-1/2	3-1/4	10-1/4	23	1	3-1/2

PUMP SIZE	GENERAL DIMENSIONS (IN INCHES)										
	PIPE SIZE	HOLD DOWN BOLTS	SHAFT				LENGTH	TO REMOVE HEAD	SEAL WATER		UNLOADER DRAIN
			DIA.	EXT.	KEYWAY	SUPPLY			TO PUMP		
Q	R	S	T	U	V	W	X	Y	AA		
L-2 H-3	1-1/2	1/2	1-1/8	2-3/4	1/4 x 1/8	2-1/2	6	1/2	3/8	3/4	
L-3 H-4	2	1/2	1-3/8	3-1/4	5/16 x 5/32	3	7	1/2	3/8	1	
K-3 L-4 H-5	3	1/2	1-7/16	3-3/4	3/8 x 3/16	3-1/2	9	1	3/4	1-1/2	
K-4 L-5 H-6	4	3/4	2-3/16	5-1/2	1/2 x 1/4	5-1/4	11	1	3/4	1-1/2	
K-5 L-6 H-7	6	3/4	2-7/16	7	5/8 x 5/16	6-1/2	13	1-1/4	1	1-1/2	

66982/3