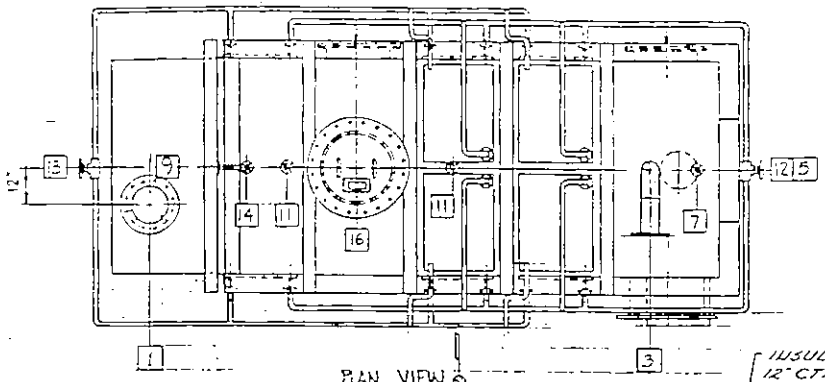
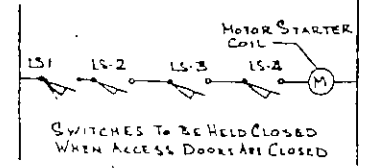


SHOP TEST PROCEDURES

- VACUUM TEST VESSEL AT 1PSIA, MAX DECAY 0.3 PSIA/HR FOR 24 HOUR.
- HYDRO TEST VESSEL AT 22 1/2 PSIG
- MANUALLY TURN MOTOR 4 MIN. OF 10 COMPLETE REVOLUTIONS TO CHECK FOR INTERFERENCE
- INSTALL & REMOVE WEIR PLATES TO INSURE FIT.



PLAN VIEW



SWITCHES TO BE HELD CLOSED WHEN ACCESS DOORS ARE CLOSED

ACCESS COVER LIMIT SWITCH WIRING DIAGRAM

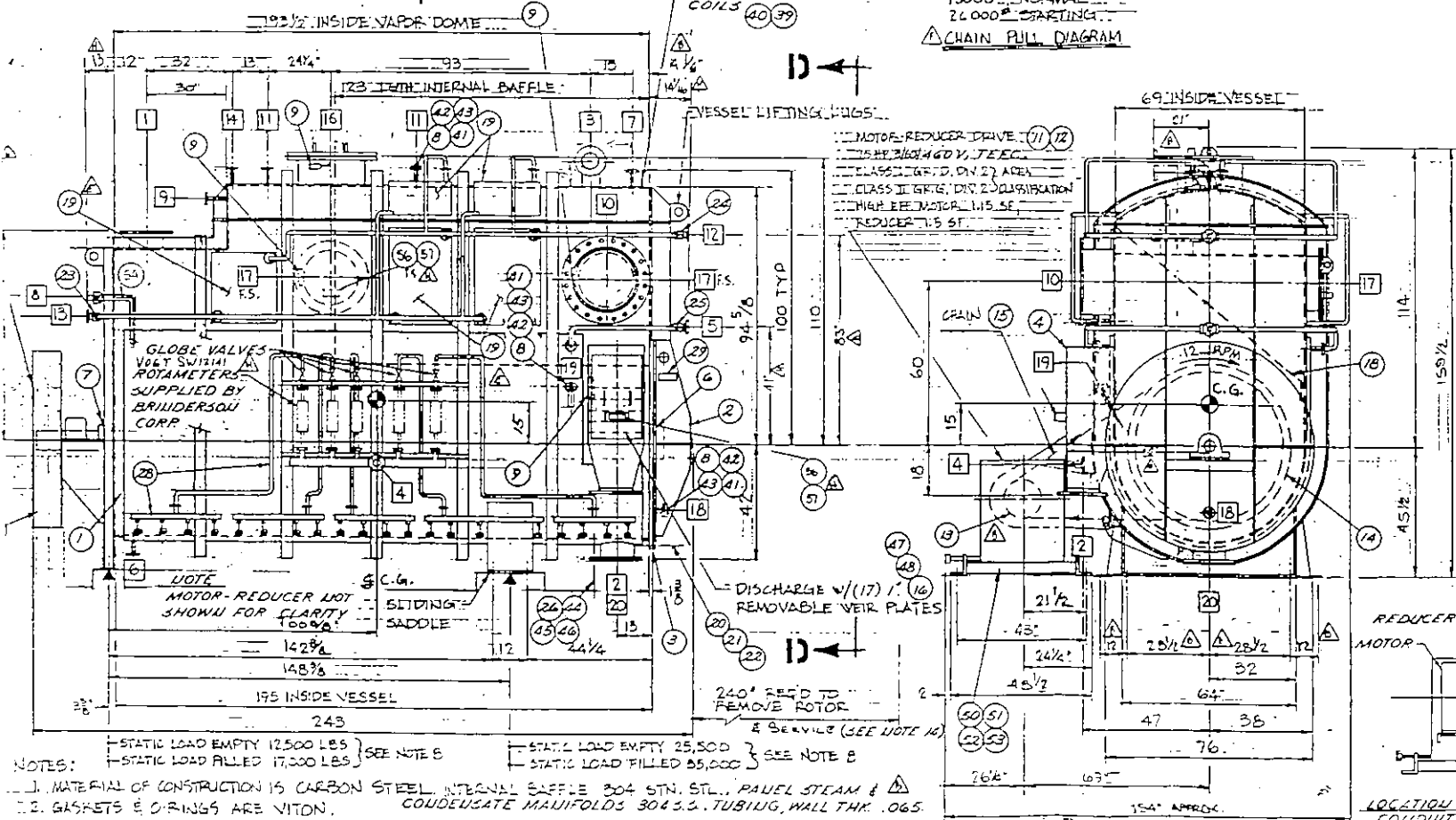
INSULATION STUDS ON 12" CTRS ON DOME COVER, END PLATES, JACKET & AROUND PAUEL COILS

10000# NORMAL STARTING
26000# STARTING

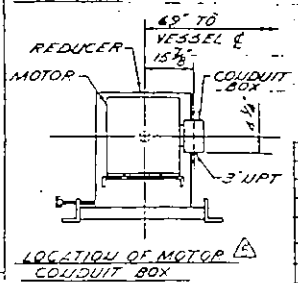
13000# NORMAL STARTING
24000# STARTING

CHAIN PULL DIAGRAM

A	Project	Garner Greenfield Vessel Design & E&I
B	Owner	L.A. County Sanitary Dist. #2
C	Engineer	Brinderson Corporation
D	Contractor	Bepe Corporation
E	Sub Contractor	Bepe Corporation
F	Sub Contractor No.	84000311
G	Supplier's Purchase Agreement No.	CR 03-400 Continuator
H	Manufacturer's Name	To Follow
I	Contract Drawing Reference	Moorehead Boiler & Mach. Co. IP-12, IM-134, IM-700
J	Applicable Specifications	11K
K	Description of location within the facility being constructed, where installation is intended:	Between Columns 311 & 314-B At Elev. 34'-0"



MOTOR: REDUCER DRIVE (11) (12)
1150V 3PH 400V 3TEC
CLASSIFIED TO DIV 22 AREA
CLASS II GRP, DIV 2 POLLUTION
HIGH EFF MOTOR 115.5F
REDUCER 7.5 SF



LOCATION OF MOTOR COULDUIT BOX

61807

~~61807~~

~~61807~~

~~61807~~

DR 102

BRINDERSON P.O. 0225-6212
ITEM NO: 1K-DR-102, 1L-DR-102 & 1M-DR-102

- NOTES:
1. MATERIAL OF CONSTRUCTION IS CARBON STEEL, INTERNAL BAFFLE 304 STN. STL., PAUEL STEAM & CONDENSATE MANIFOLDS 304 S.S. TUBING, WALL THK. .065
 2. GASKETS & O-RINGS ARE VITON.
 3. JACKET DESIGNED AND LABELED IN ACCORDANCE WITH ASME CODE SECTION VIII CURRENT ISSUE. DESIGN PRESSURE 190 PSIG AT 325°F. HYDROSTATIC TEST AT 285 PSIG. VESSEL DESIGN PRESSURE 15 PSIG AT 325°F. HYDROSTATIC TEST AT 22 1/2 PSIG, ASME LABELED AND VACUUM TEST AT 1PSIA, MAX DECAY 0.3 PSIA/HR. FOR 24 HRS.
 4. VESSEL TROUGH SHELL TO INCLUDE 1/8" CORROSION ALLOWANCE. (TOTAL) 3/8" SHELL & 1/2" X 1/2"
 5. ROTOR PADDLES LEADING EDGES ARE HARDFACED (1/8" CORROSION ALLOWANCE)
 6. ROTOR PADDLES LEADING EDGES ARE HARDFACED (1/8" CORROSION ALLOWANCE)
 7. UNIT WEIGHTS: ROTOR 5500#, UNIT TOTAL LESS DRIVE 35000#. DRIVE WT. 4000# (REDUCER, MOTOR, BASE), CHAIN & SPROCKETS 1726#. OPERATING WEIGHT WITH 400 FT³ MATERIAL = 58000# (APPROX. TOTAL INCLUDING DRIVE).

8. THESE LOADS DO NOT INCLUDE DYNAMIC LOAD RESULTING FROM CHAIN PULL.
9. INSULATION CLIPS ARE PROVIDED ON APPROX 12" CENTERS AROUND JACKET AND PLATE COILS.
10. PINT PER FIN SPEC 94-712-A. USE SFL DA 0-7C FOR SPROCKETS TO SADDLE UNIT 4'S WHEEL
11. ALL PLS. BELONG TO BRINDERSON UNIT 4'S WHEEL
12. NOTE: WT TO BE REMOVED 2354 @ 3 FT.
13. HEAVY TRANSPORT BASK JACKET 214.50 FT
14. TWO SETS OF ROTOR DOLLIES SHALL BE FURNISHED BY BEPEX
15. PAUEL COILS SHALL COVER 25% OF THE VAPOR DOME

REV	DATE	EGN. NO.	DESCRIPTION	BY	CHK
H	11-11-84		ADD VOLT VALVE * Add G to PSI	RL	RL
H	9-3-86		VESSEL DESIGN TEMP WAS 350°F FROM 325°F	RL	RL
E	9-3-86		REVISED QUANTITY OF PAUEL COILS	RL	RL
D	8/1/86		ADDED BILL OF MATERIAL	RL	RL
C	7/14-84		SEE SHEET B	RL	RL
B	6-10-84		MOTOR WAS OPPOSITE SIDE SHOWN, KENNEDY SHT 3	BD	BD
A	2-15-84		REDRAWN ADDED SHT 2	ED	ED

THIS DRAWING IS THE PROPERTY OF BEPEX CORPORATION AND IS LOANED TO YOU FOR YOUR USE ONLY. THE REPRODUCTION OR TRANSMISSION OF THIS DRAWING OR ANY PART OF THE DESIGN CONTAINED HEREIN IS PROHIBITED WITHOUT THE WRITTEN CONSENT OF BEPEX CORPORATION.

bepex corporation

TITLE: 1M-DR-102, 1L-DR-102 & 1K-DR-102
CRUJ 400 CONTINUATOR
2ND STAGE HYDROEXTRACTOR

SCALE: 1" = 1'-0"

DATE: 11-11-84
DRAWING NO: DR 102
PROJECT: D502567

DESIGNER: RL
CHECKED: RL
APPROVED: RL

1 SIM TO 1 ORIG 2000 1 SHEET OF 2