

NO.	DATE	DESCRIPTION	BY	CHKD.	APPV.
1	11-24-76	GENERAL REVISION			
2	1-28-77	VENT TUBES NEET SHT 2 & 3			
3	1-17-77	REVISION BASE RING			

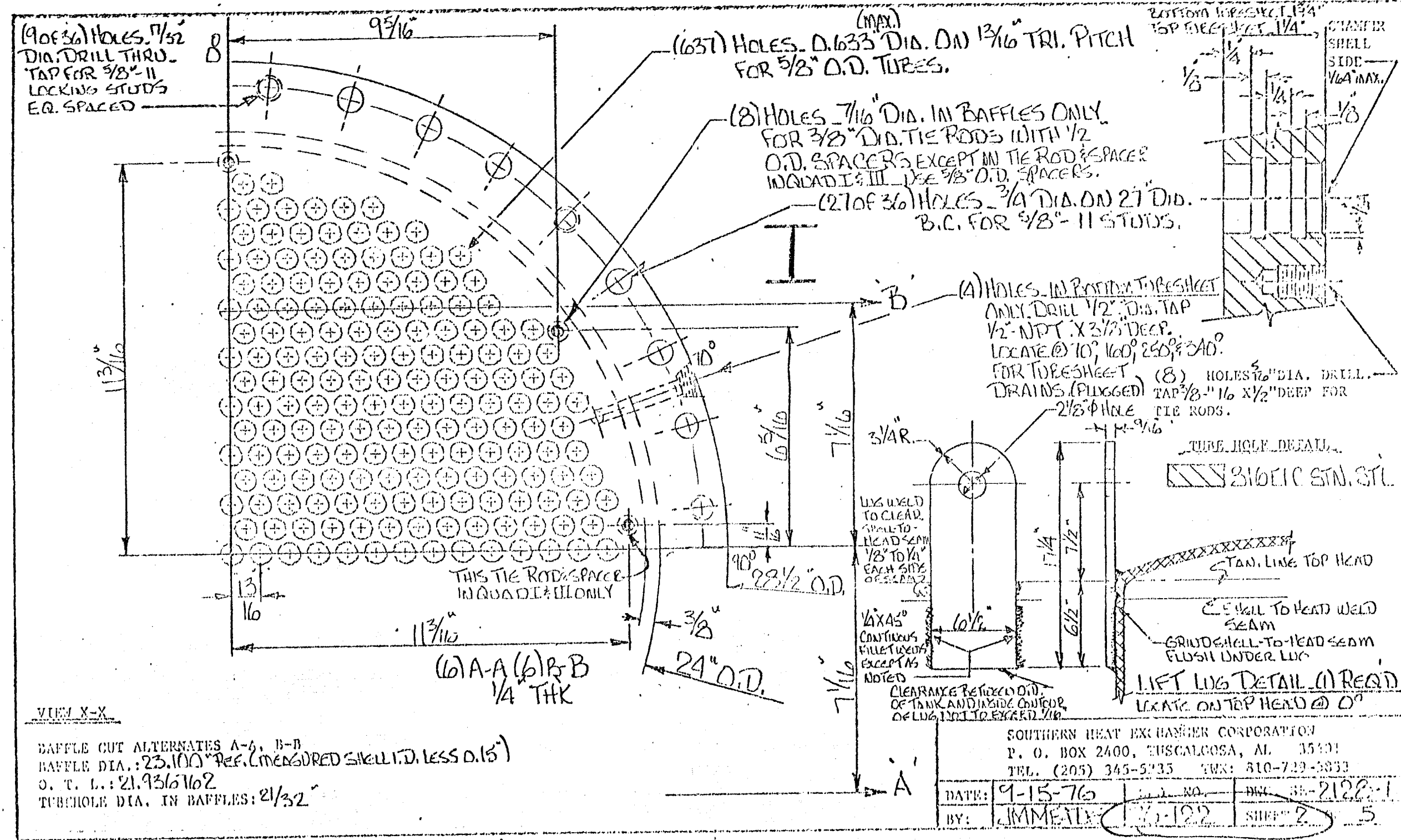
REV.	DATE	DESCRIPTION
1	3-11-77	REVISION BASE RING
2	5-20-77	ADD DIMENSION

CUSTOMER: LANIER
 CUSTOMER P. O. NO.: 211-2 22730-1
 ITEM NO.: 4-131 PROP. NO.: 118-3302
 PLANT: NEW ORLEANS
 SIZE: 12\"/>

ENG. O. C.
 SOUTHERN HEAT EXCHANGER CO.
 P. O. BOX 2467, THUNDERBOLT, AL. 36688
 DATE: 11-24-76 BY: AW 11-24-76
 2128-5
 1 OF 5

CONDENSER & ACCUMULATOR

61188



61188

NOZZLE SCHEDULE ANSI					MATERIALS OF CONSTRUCTION					ASME CODE REQUIREMENTS														
MK.	SIZE	RATING	FACING	NOZZLE NECK	SERVICE	TUBES	FLANGES	NOZZLE FLANGES	NOZZLE PIPE	STUDS	NUTS	GASKETS	PACKING	FLTG. BARREL	FLTG. HD. SNAP	FLTG. HD. FLG.	ACCUMULATION HEAD, SHELL & PORT	ACCUMULATION NOZZLES	ACCUMULATION NOZZLE FLANGES	ACCUMULATION PORT FLANGES	SHELL	TUBE	TUBE SIDE	
B	10"	150#	L.J.	SCH. 40 316 EL	INLET	SA-240 TP 316 EL	SA-240 TP 316 EL	SA-181 GR 2	SA-240 TP 316 EL	SA-193-B7	SA-194-2H	SA-181 GR 2	SA-240 TP 316 EL	SA-240 TP 316 EL	SA-240 TP 316 EL	SA-240 TP 316 EL	SA-240 TP 316 EL	SA-181 GR 2	SA-181 GR 2	SA-181 GR 2	SA-181 GR 2	SA-181 GR 2	SA-181 GR 2	SA-181 GR 2
H	1"	3000#	THD	SCH. 40 316 EL	VENT	SA-240 TP 316 EL	SA-240 TP 316 EL	SA-181 GR 2	SA-240 TP 316 EL	SA-193-B7	SA-194-2H	SA-181 GR 2	SA-240 TP 316 EL	SA-240 TP 316 EL	SA-240 TP 316 EL	SA-240 TP 316 EL	SA-240 TP 316 EL	SA-181 GR 2	SA-181 GR 2	SA-181 GR 2	SA-181 GR 2	SA-181 GR 2	SA-181 GR 2	SA-181 GR 2
A	6"	150#	L.J.	SCH. 40 304 EL	VENT	SA-240 TP 316 EL	SA-240 TP 316 EL	SA-181 GR 2	SA-240 TP 316 EL	SA-193-B7	SA-194-2H	SA-181 GR 2	SA-240 TP 316 EL	SA-240 TP 316 EL	SA-240 TP 316 EL	SA-240 TP 316 EL	SA-240 TP 316 EL	SA-181 GR 2	SA-181 GR 2	SA-181 GR 2	SA-181 GR 2	SA-181 GR 2	SA-181 GR 2	SA-181 GR 2
C	3"																							
D1-2	1/2"																							
L	1/2"																							
E	8"	150#	RFSO	STD. WT.																				
F	8"																							
G	1"	6000#	THD	NOZZLE COUPLET PLUGGED	VENT																			
K1-2	1"																							
M1-4	1/2"		N.P.T.																					
N	1"	6000#	THD	NOZZLE COUPLET PLUGGED	VENT																			

NOTES		NON PRESSURE PARTS	
1. EST. WT. EMPTY: 2050#	FULL: 13640#	SUPPORT SKINT	SA-240 TP 304
2. ALL BOLT HOLES STRADDLE NORMAL		RAFFLES/SUPPORTS	SA-240 TP 304
3. PLYWOOD COVERS ON ALL OPEN NOZZLES.		TIE RODS & SUPPORTS	304 SS
4. PAINT	PAINTS SURFACES BEHIND DRAIN	LIFT LOG	SA-240 TP 316 EL
		PIPE	304 SS
		BASE RATE	SA-515/316 GR 70
		SNAP RINGS	SA-240 TP 304

ASME CODE REQUIREMENTS		
	SHELL SIDE	TUBE SIDE
DES. PRES.	100 PSI	92
DES. TEMP.	100 °F	100
HYDR. TEST PRES.	150 PSI	138
CORROSION ALLOWANCE	1/16" (CSFL)	Δ
POSTWELD HEAT TREATMENT	NO	NO
RADIOGRAPHIC EXAMINATION	SPOT	
ASME CODE STAMP & NAT'L. BO. REGISTRATION	IS REQ'D.	
CUST. INSPECTION	IS REQ'D.	
SPECIFICATIONS	ASME CODE SECTION 1, 2, 5, 8, 9, 10, 11, 12, 13, 14, 15, 16, 17, 18, 19, 20, 21, 22, 23, 24, 25, 26, 27, 28, 29, 30, 31, 32, 33, 34, 35, 36, 37, 38, 39, 40, 41, 42, 43, 44, 45, 46, 47, 48, 49, 50, 51, 52, 53, 54, 55, 56, 57, 58, 59, 60, 61, 62, 63, 64, 65, 66, 67, 68, 69, 70, 71, 72, 73, 74, 75, 76, 77, 78, 79, 80, 81, 82, 83, 84, 85, 86, 87, 88, 89, 90, 91, 92, 93, 94, 95, 96, 97, 98, 99, 100	
NAME PLATE DATA	N.D. 2333	
SHELL	YR. 1977	
MADP	75 PSI	300 PSI
MADT	450 F	75 PSI
TUBE		
MADP	75 PSI	300 PSI
MADT	450 F	75 PSI
SHE ORD.	76-177	
CUST. ORD.	81-2422-1	
EQUIP. NO.	9-157	
SOUTHERN HEAT EXCHANGER CORP.		
P.O. BOX 2400, TUSCALOOSA, ALA. 35401		
TEL. 205/345-4335 TWX 010-729-5033		
DATE	9-15-76	ORD. NO. DWG. NO. 2125
BY	JMM:YCE	SHEET 4 OF 5

61188