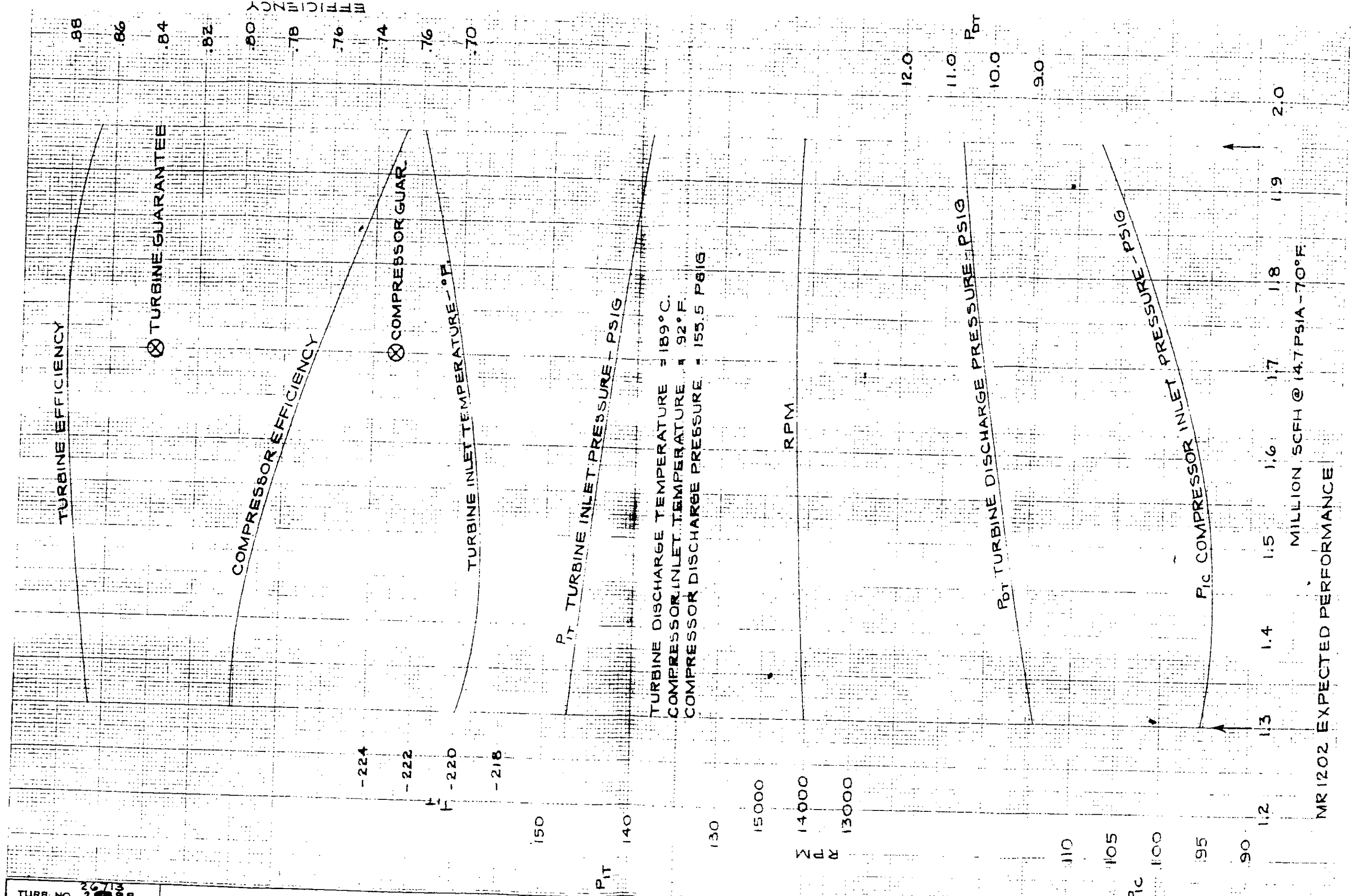


TURB. NO. 26713
 S.O. NO. - 15399

WORTHINGTON CORPORATION
 TURBINE DIVISION, WELLSVILLE, N. Y.

DATE 3-27-67
 EM-14100



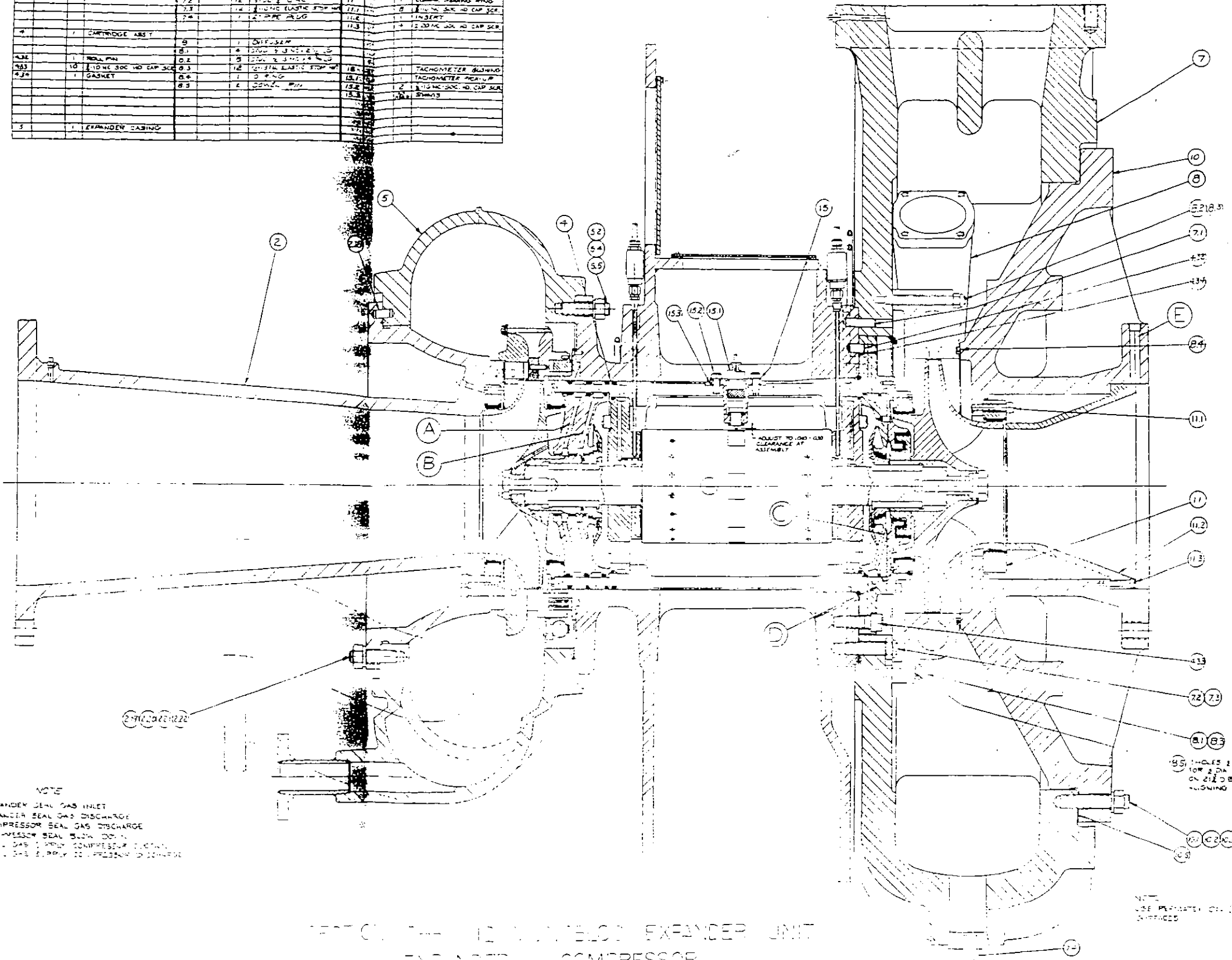
MR1202 EXPECTED PERFORMANCE

MILLION SCFH @ 14.7 PSIA - 70°F.

5713

LE-90857

| ITEM NO. | PART NO. | NAME OF PART | QTY. | UNIT | ITEM NO. | PART NO. | NAME OF PART | QTY. | UNIT |
|----------|----------|-------------------------|------|------|----------|----------|-------------------------|------|------|
| 1 | | EXPANDER NOZZLE ASSY | 1 | | 10 | | COMPR. INLET CASING | 1 | |
| 2.18 | | ROLL PIN | 1 | | 11 | | STUD 1/2" X 1/2" | 1 | |
| 2.19 | | STUD 1/2" X 1/2" | 1 | | 12 | | NEA NUT 1/2" X 1/2" | 1 | |
| 2.20 | | STUD 1/2" X 1/2" | 1 | | 13 | | LOCKWASHER 1/2" | 1 | |
| 2.21 | | NEA NUT 1/2" X 1/2" | 1 | | 14 | | COMPR. BEARING RING | 1 | |
| 2.22 | | LOCKWASHER 1/2" | 1 | | 15 | | INLET BRK. HD CAP SCR. | 1 | |
| 3 | | EXPANDER CASING | 1 | | 16 | | INSERT | 1 | |
| 4 | | CHARTROUGE ASSY | 1 | | 17 | | 1/2" DIA. HD CAP SCR. | 1 | |
| 4.1 | | ROLL PIN | 1 | | 18 | | TACHOMETER BRUSHING | 1 | |
| 4.2 | | 1/2" X 1/2" HD CAP SCR. | 1 | | 19 | | TACHOMETER PICK-UP | 1 | |
| 4.3 | | GASKET | 1 | | 20 | | 1/2" X 1/2" HD CAP SCR. | 1 | |
| 5 | | EXPANDER CASING | 1 | | | | | | |



NOTE
 A EXPANDER SEAL GAS INLET
 B EXPANDER SEAL GAS DISCHARGE
 C COMPRESSOR SEAL GAS DISCHARGE
 D COMPRESSOR SEAL BACK DOWN
 E SEAL GAS 1. FROM COMPRESSOR SECTION
 F SEAL GAS 2. FROM COMPRESSOR SECTION

1/8" HOLES 2 DRILL (MEAN 1/8" DIA. DONE. P.N.E. ON 212 D.B.C. AFTER ALLOWING DIST. SER.

NOTE
 USE PERMANENT OIL IN MAPPING SURFACES

SECTION THROUGH 12 IN. DIAMETER EXPANDER UNIT
 EXPANDER COMPRESSOR

| | |
|--------------------------|------|
| WESTINGHOUSE CORPORATION | |
| LE-90857 | |
| DATE | 1957 |
| BY | |
| CHECKED | |
| APPROVED | |

52680

FIGURE 2

WORTHINGTON CORPORATION

EXPANDER UNIT

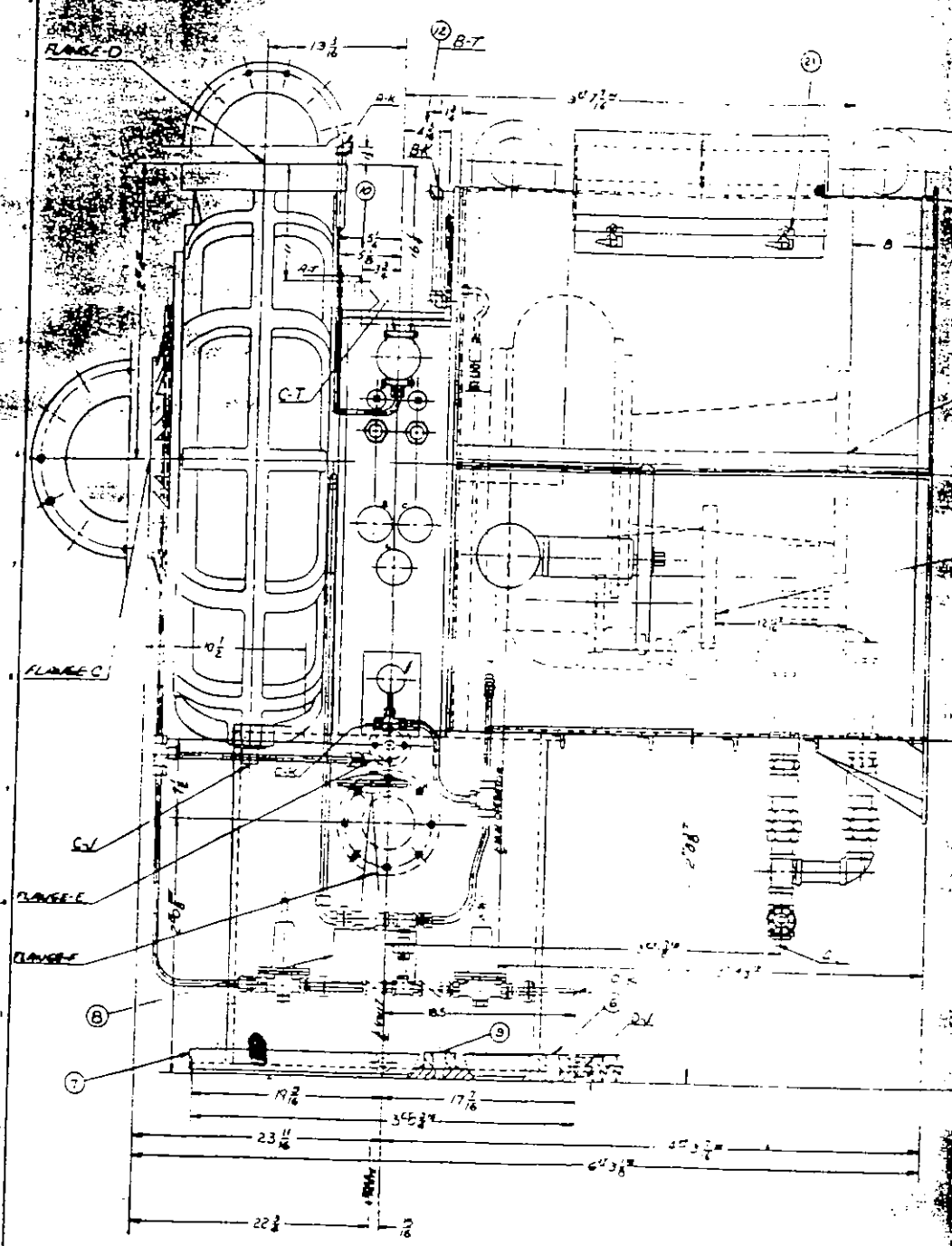
MODEL: MA-1001 TYPE: MEDIAL
 ORDER NO.: C-5877 SERIAL NO.: 24818-24820
 NOMINAL SPEED: 1400 RPM

EXPANDER **COMPRESSOR**

GAS: NITROGEN MEDIUM: NITROGEN

VOLUME FLOW: 1000 CFM VOLUME FLOW: 1000 CFM
 INLET PRESSURE: 100 PSIA INLET PRESSURE: 100 PSIA
 INLET TEMPERATURE: 100 °F INLET TEMPERATURE: 100 °F
 OUTLET PRESSURE: 34.7 PSIA OUTLET PRESSURE: 175.2 PSIA

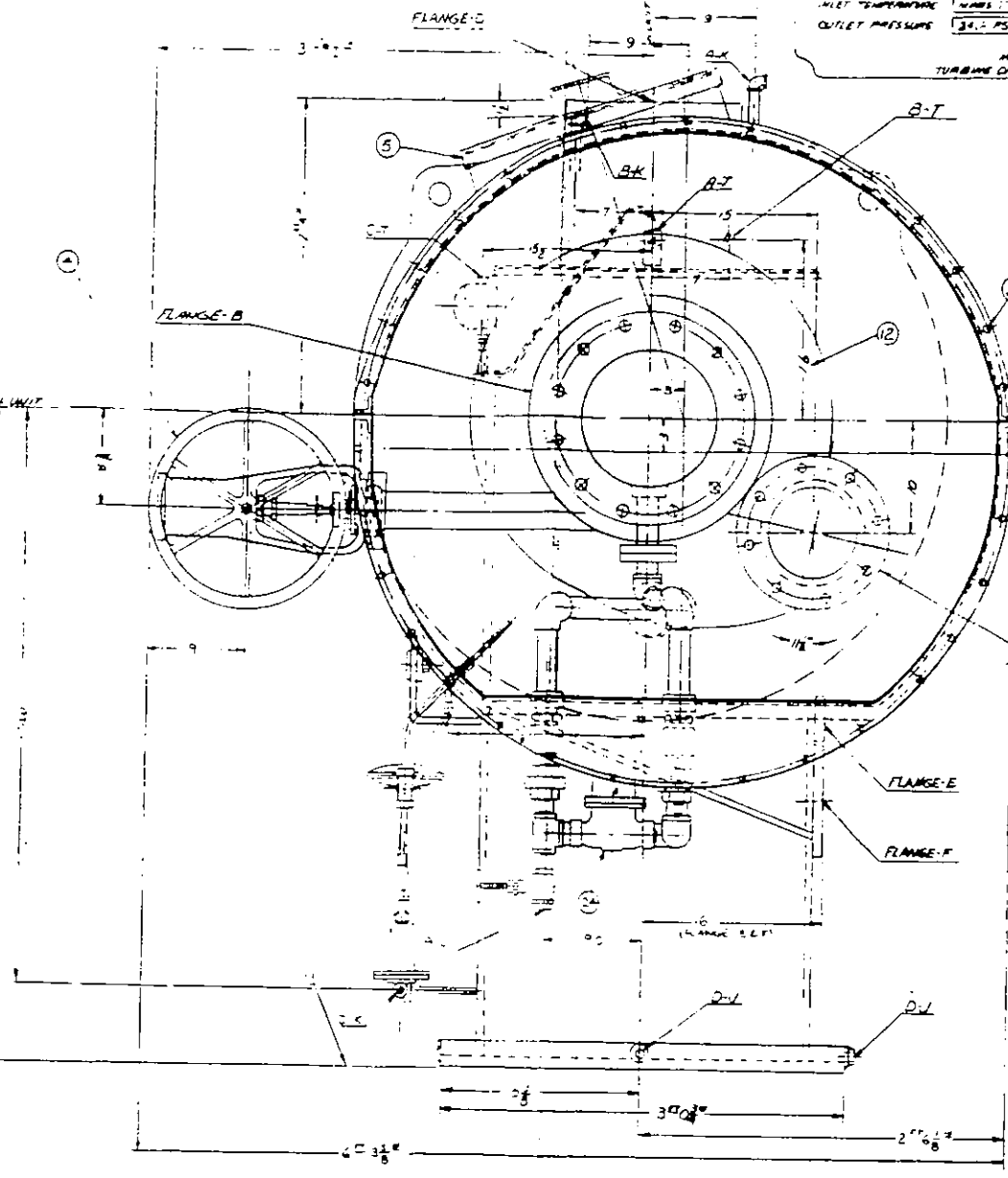
MADE IN USA
 TURBINE DIVISION - WELLSVILLE, OHIO



1. TAPPED HOLES ARE DRILLED THRU
 2. TAPPED HOLES ARE DRILLED 1/8 DEEP TO POINT
 3. TAPPED HOLES ARE DRILLED 3/8 DEEP
 4. TAPPED HOLES ARE DRILLED 1/2 DEEP

2. FOUNDATION BOLTS SHOULD NOT BE LOCATED UNTIL
 UNIT IS IN PLACE ON FOUNDATION
 3. 12 HOLES 3/4 DIA EQUALLY SPACED ON 5 1/2 DIA B.C.
 4. MASON - WELLSVILLE OPERATOR - 11/11/51

1. 2" X 1/2" HANDLE & COVER SPA TIGHT AGAINST / PSI
 2. 1/4" HOLES 1/2 DIA
 3. 1" DIA RIM
 4. MOUNTING ON DISPLAY PLATE
 5. 3" X 3" JACKING SCREWS - (2 EACH SIDE)



CUSTOMER'S FLANGED CONNECTIONS

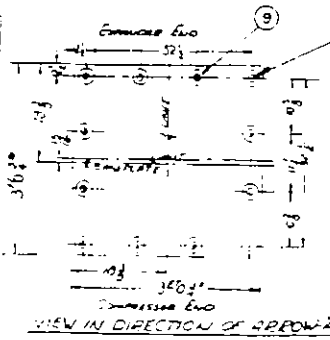
| FLANGE | NO. | SIZE | W. FOR HOLES | W. FOR HOLES THICKNESS | REMARK |
|--------|-----|------|--------------|------------------------|---------|
| A | 150 | 8" | 13 1/2 | 1 1/2 | NOTE 16 |
| B | 150 | 12" | 19 | 1 1/2 | NOTE 17 |
| C | 150 | 12" | 19 | 1 1/2 | NOTE 17 |
| D | 150 | 10" | 16 | 1 1/2 | NOTE 17 |
| E | 150 | 8" | 13 1/2 | 1 1/2 | NOTE 18 |
| F | 150 | 5" | 10 | 1 1/2 | NOTE 19 |

CUSTOMER'S SCREWED CONNECTIONS

| CONNECTIONS NO. | SIZE | REQUIRED | SUPPLIED | REMARK |
|-----------------|------|----------|----------|---------|
| B | 1/2" | YES | NO | PLUGGED |
| C | 1/2" | YES | NO | PLUGGED |
| D | 1/2" | YES | NO | PLUGGED |
| E | 1/2" | YES | NO | PLUGGED |
| F | 1/2" | YES | NO | PLUGGED |

LIST OF GAGES

| DESCRIPTION | GAUGE | REMARKS |
|--------------------|-----------|---------------|
| INLET PRESSURE | 100 PSIA | NOT INSTALLED |
| OUTLET PRESSURE | 34.7 PSIA | NOT INSTALLED |
| INLET TEMPERATURE | 100 °F | NOT INSTALLED |
| OUTLET TEMPERATURE | 175.2 °F | NOT INSTALLED |



EXPANDER UNIT NO. 2000-22

OUTLINE

WORTHINGTON CORPORATION

MADE IN USA

LE-110871

571200