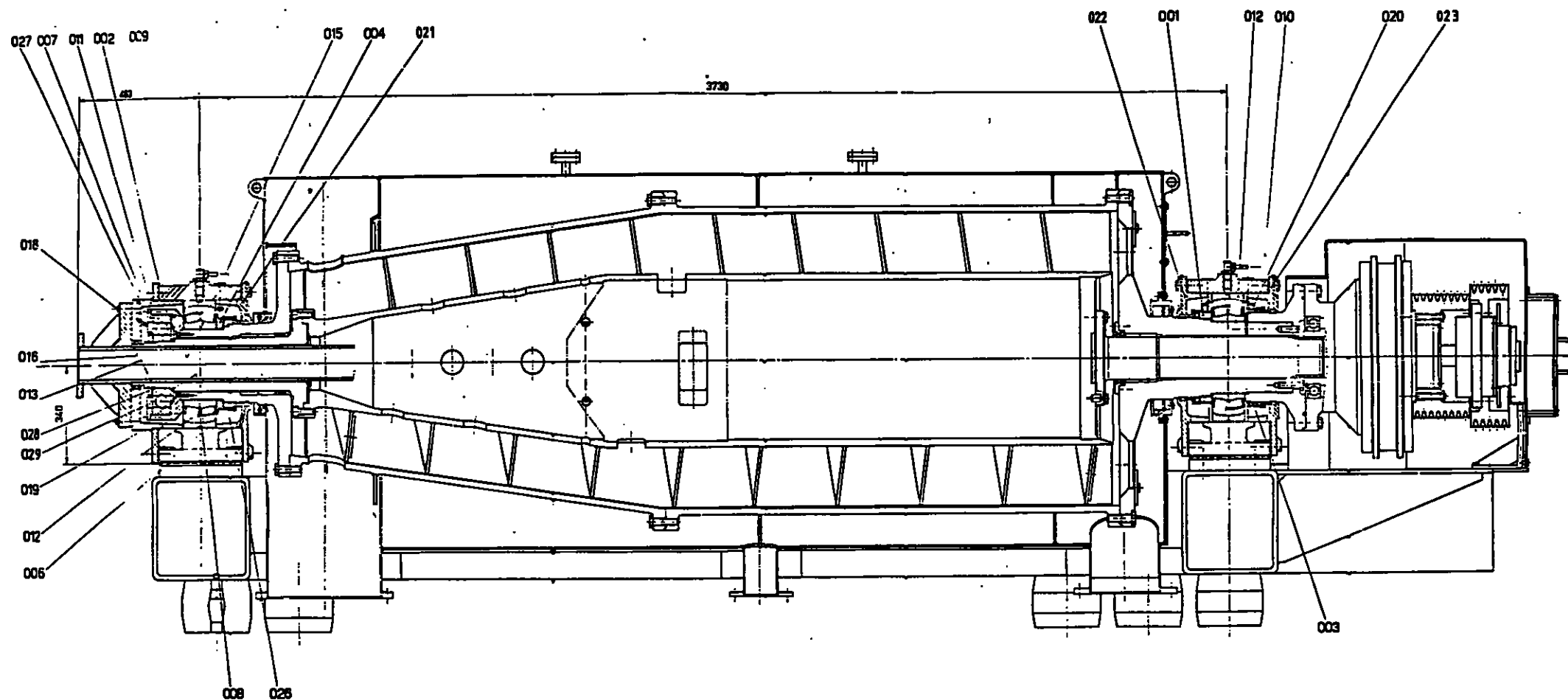


33025



601 A/B

1:1	1:1	1:1	1:1
2:1	2:1	2:1	2:1
3:1	3:1	3:1	3:1
ZDA-100 / ZDC-100			
Lagerung (Zusammenst.)			

43025

<b>MACHINE INFO</b>	
MANUFACTURER:	Escher Wyss.
TYPE:	Horizontal decanter.
MODEL:	ZDC-100.
SERIAL NO.:	2870
<b>TECHNICAL DATA</b>	
MATERIAL:	Stainless steel type 316.
BOWL:	Diameter = 40", length = 118.6" (cylinder - 65.5", 10 deg. - 53")
CONVEYOR:	Single 10' lead, Speed to bowl 10 - 30 RPM.
LUBRICATION:	Circulating oil.
SEALS:	Air restriction.
SPEED:	1800 RPM.
<b>DRIVE MOTOR</b>	
MANUFACTURER:	BBC (CH).
HORSEPOWER:	260
VOLTS:	460
PHASE:	3
AMPS:	
R.P.M.:	1800
<b>REDUCER</b>	
TYPE:	Cylo.
MODEL:	FRG ZS 12-25.
RATIO:	25:1.
BACKDRIVE:	Brake motor Odenwald FRG, type 200 L4, 40 HP, 1800 RPM, 460 v, 60 Hz., 3 Ph.
<b>WEIGHT</b>	
NET W/O MOTOR:	15,000#
OTOR W/ REDUCER:	7000#
REDUCER:	700#
CASE TOP:	
CONVEYOR:	
<b>OTHER</b>	
	Overload clutch - Richiger (CH) type CR 100.
	Fluid clutch - Voith (FRG) type VTK 467 TVVYC.

# SULZER ESCHER WYSS

Maschine  
Machine  
Machine  
Kennwort  
Mot d'ordre  
Plant code

ZDC-100  
JASPER 84

Maschinen-Nr.  
Machine No.  
Machine No.  
Bestell-Nr.  
Commande No.  
Order No.

2870/2871  
0.250.007

Blatt  
Feuille  
Sheet  
Datum  
Date  
Date

8  
Sept. 85

## Pump motor for circulation system:

Manufacture	BBC (CH)
Type	80 K 6
Nominal output	0.37 kW
Speed	1200 rpm
Type	V 1
Protection	IEC - IP 54
Voltage	460 V
Frequency	60 Hz

## Cooler for lub. oil system:

Manufacture	Lüco (FRG)
Type	8-00.14-1
Cooling water requirement	5-6 lt/min.
Inlet temperature cooling water	approx. 30 °C
Outlet temperature cooling water	approx. 45 °C

## Vibration protection:

Manufacture	Robertshaw (USA)
Model	366 - A 8
Power supply	117 VAC, 60 Hz

43025

# SULZER ESCHER WYSS

Maschine  
Machine  
Machine  
Kennwort  
Mot d'ordre  
Plant code

ZDC-100

JASPER 84

Maschinen-Nr.  
Machine No.  
Machine No.

2870/2871

Bestell-Nr.  
Commande No.  
Order No.

0.250.007

Blatt  
Feuille  
Sheet

7

Datum  
Date  
Date

Sept. 85

## Mechanical overload clutch

Manufacture	Richiger (CH)
Type	CR 100
Proximity switch	EAS - sproc / Typ 1
Torque setting	720 Nm

## Hydrodynamic fluid coupling:

Manufacture	Voith (FRG)
Type	VTK 487 TVVYC
Oil filling	14 lt
Thermal protection	140 °C release pin element 160 °C melting plug

## Drive motor:

Manufacture	BBC (CH)
Type	315 M4b
Nominal output	200 kW
Speed	1800 rpm
Type	B 3
Protection	IEC - IP 54
Voltage	460 V
Frequency	60 Hz

## Brake motor:

Manufacture	Odenwald (FRG)
Type	200 L 4
Nominal output	30 kW
Speed	1800 rpm
Type	B 3
Protection	IEC - IP 54
Voltage	460 V
Frequency	60 Hz

43025

# SULZER ESCHER WYSS

Maschine  
Machine  
Machine  
ZDC-100  
Kennwort  
Mot d'ordre  
Plant code  
JASPER 84

Maschinen-Nr.  
Machine No.  
Machine No.  
2870/2871  
Bestell-Nr.  
Commande No.  
Order No.  
0.250.007

Blatt  
Feuille  
Sheet  
6  
Datum  
Date  
Date  
Sept. 85

## 3. TECHNICAL DATA

<u>Weights:</u>	Weight in Operation	approx. 15'500 kg
	Net weight (without motor)	approx. 14'500 kg
	Weight of Rotor	approx. 4'500 kg
	Weight of scroll	approx. 1'500 kg

<u>Dimensions:</u>	M.No. 2870	General arrangement drawing No. 3'726'730
	M.No. 2871	General arrangement drawing No. 3'726'750

### Rotor:

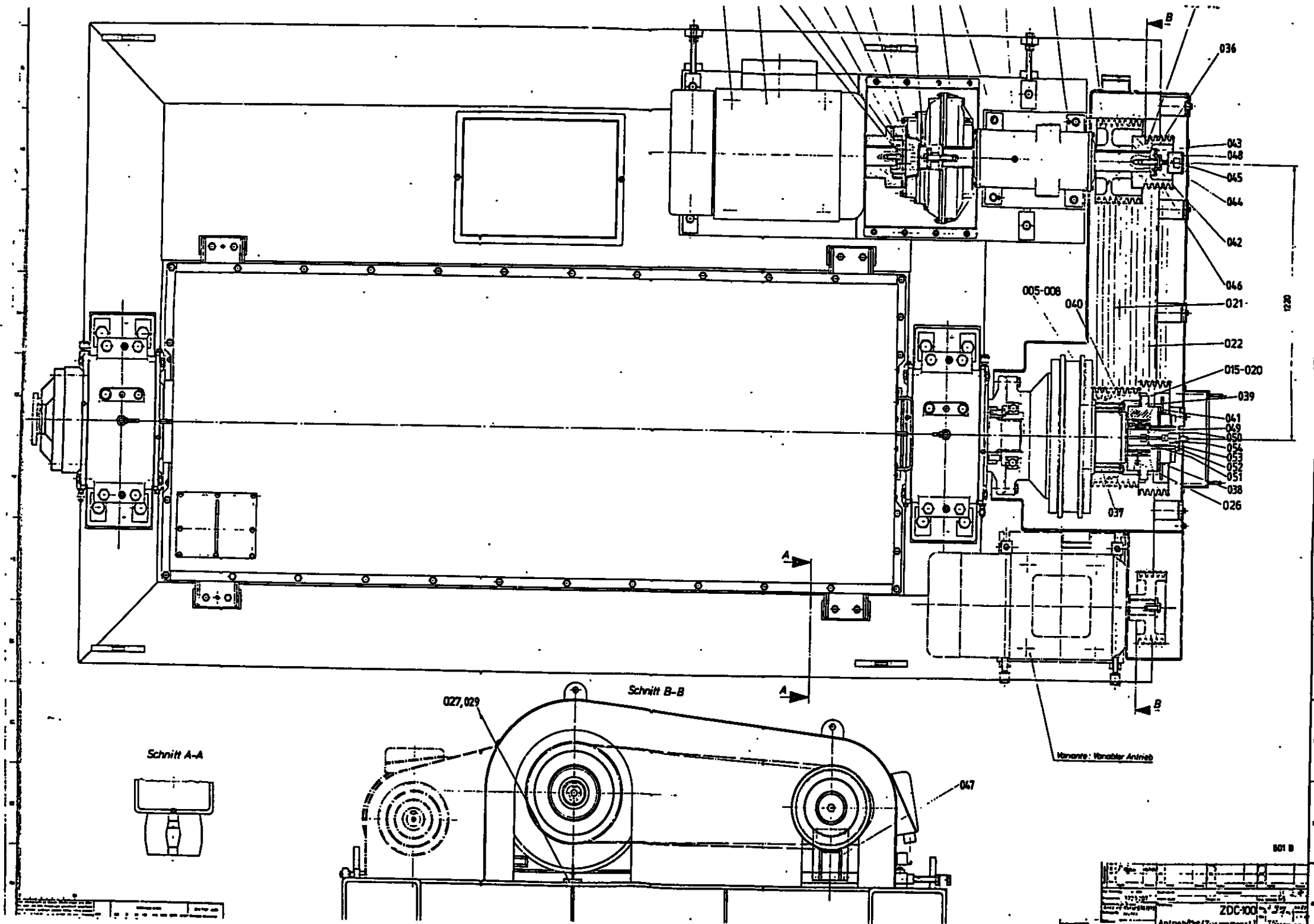
Bowl design	conical / cylindrical
Max. cyl. bowl diameter	1000 mm
Min. con. bowl diameter	625 mm
cyl. bowl length	1665 mm
con. bowl length	1350 mm
L/D ratio	3
WR <sup>2</sup> of empty bowl	553 kgm <sup>2</sup>
Rotor speed	1000 - 1500 rpm
Radial acceleration	558 - 1257 x g
Scroll speed	10 - 30 rpm
Rated rotor speed	max. 1500 rpm
Rated radial acceleration	max. 1250 x g
Rated differential scroll speed	approx. 15 rpm
Scroll	single start
Seals	labyrinths

### Gear box:

Manufacture	Cyclo (FRG)
Type	ZS 12 - 25
Ratio	1 : 25

43025

43025



1971	1972	1973	1974	1975	1976	1977	1978	1979	1980
ZDC-100									
Anteil Pro (7) ...									