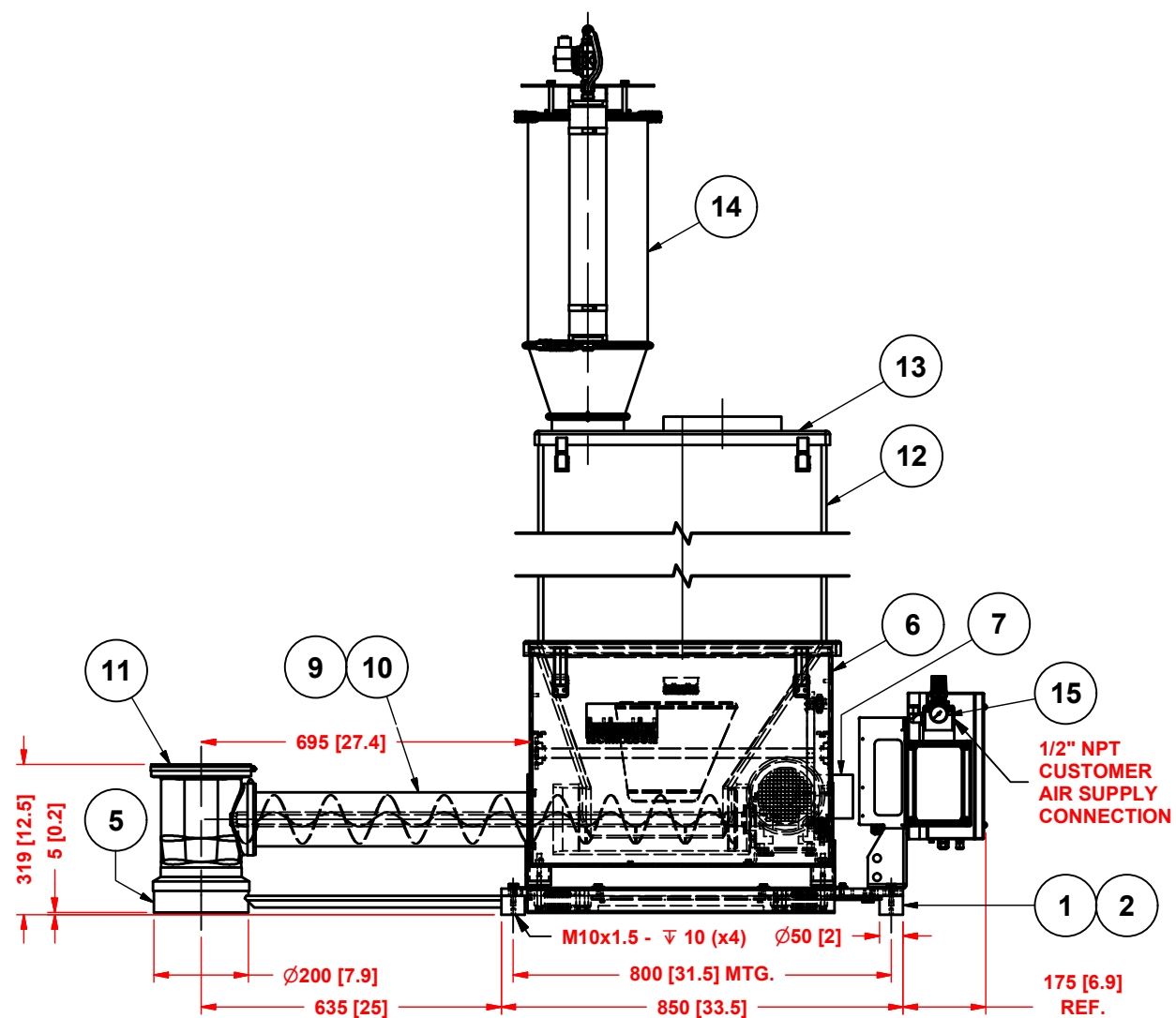
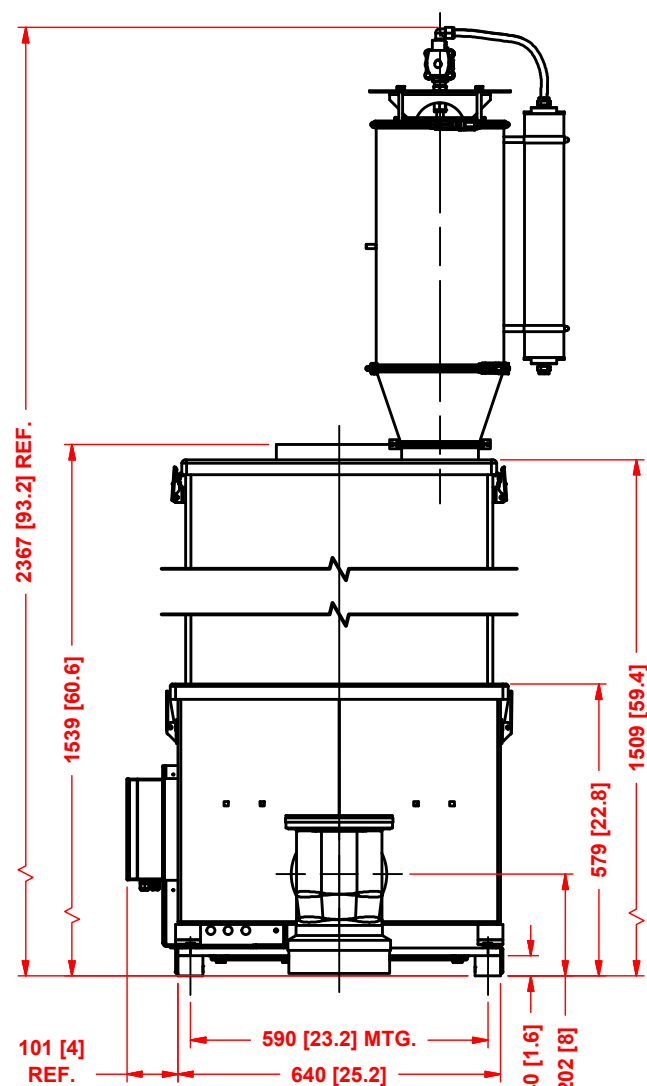
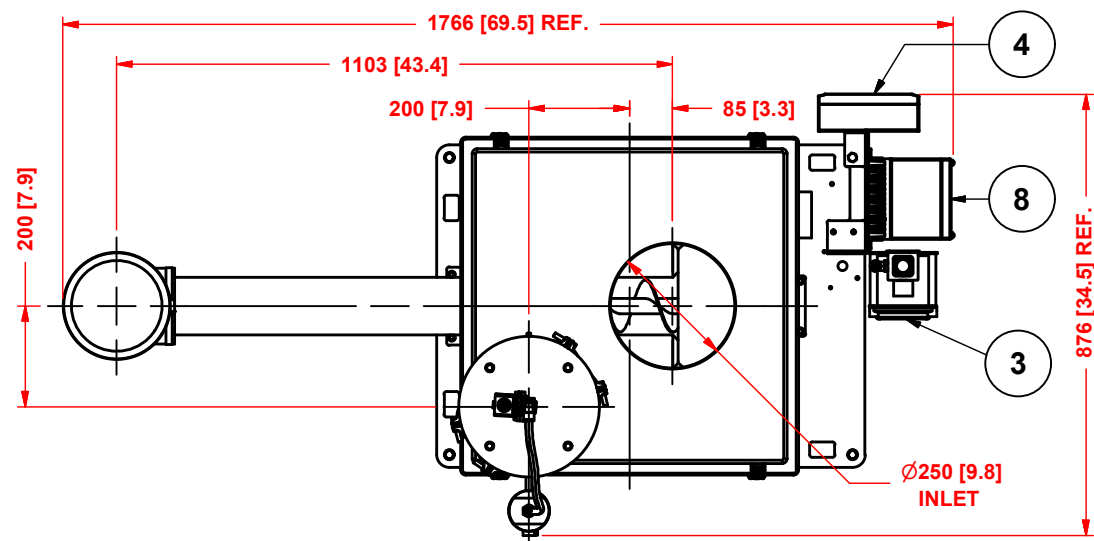


**JET FILTER PNEUMATIC SCHEMATIC**  
SCALE: NTS



ITEM	DESCRIPTION	REMARKS
1	WEIGHING SCALE SUB-ASSEMBLY	c/w ANTI-VIBRATION MOUNTS (x4), SHIPPING BRACKETS & GROUNDING TAP
2	LOAD CELL (x4)	ANALOG; 200kg EA. CAPACITY, 2mV/V, HBM #Z6FC3
3	LOAD CELL TERMINATION	SUMMATION BOX, NEMA 4
4	SUMMATION BOX TERMINATION	ISC-CM-SG Plus CONTROL MODULE, IP65
5	FIXED OUTLET	c/w 400mm EXTENSION, SILICONE STEP BELLOW & BAND CLAMPS (x2)
6	FLEXIBLE WALL FEEDER	MODEL FW120N c/w PADDLE AGITATION
7	DRIVE MOTOR	1 HP, 230V/3PH/60Hz, TEFC, INVERTER DUTY, 20:1 RATIO, 88 OUTPUT RPM @60Hz, INSULATION CLASS 'F', NORD GEAR MODEL #SK1SMID50AX-80LH/4
8	DRIVE MOTOR TERMINATION	ISC-FC Plus AC MOTOR CONTROLLER, IP65
9	SCREW	B103/105 c/w 400mm EXTENSION; STAINLESS STEEL
10	SCREW TUBE	1091 c/w 400mm EXTENSION
11	VERTICAL OUTLET	POLYURETHANE c/w PLASTIC CAP & BAND CLAMPS (x2)
12	EXTENSION HOPPER	350 LITRE (APPROX.)
13	EXTENSION HOPPER LID	AUTO REFILL c/w INLET & JF-250 VENT STUBS
14	JET FILTER SUB-ASSEMBLY (SHIPPED LOOSE) (SEE NOTE #9)	MODEL #JF250 c/w: -304SS HOUSING c/w QUICK RELEASE CLAMPS -FILTER CARTRIDGE: POLYESTER NON-WOVEN 973116 ANTI-STATIC, EPTFE MEMBRANE -24VDC CONTROL VAVLE w/DIN CONNECTOR, 2-POSITION/2-WAY, 1/2" NPT PORTS, NEMA 4, NORMALLY CLOSED -2 LITRE (0.07 cu.ft.) PNEUMATIC RESEVOIR
15	JET FILTER PRESSURE REGULATOR (SEE NOTE #9)	1/2" NPT c/w 0-160 PSI GAUGE
16	INLET FLEXIBLE CONNECTION (NOT SHOWN)	Ø10" x 6" LONG, RUBBER COATED NYLON c/w BAND CLAMPS (x2)
17	OUTLET FLEXIBLE CONNECTION (NOT SHOWN)	Ø8" x 6" LONG RUBBER COATED NYLON c/w BAND CLAMPS (x2)

**NOTES**

- ALL DIMENSIONS ARE IN MILLIMETERS [INCHES] UNLESS NOTED OTHERWISE.
- INGREDIENT CONTACT SURFACES ARE 304 SS/POLYURETHANE UNLESS NOTED OTHERWISE.
- FEEDER HOUSING, EXTENSION HOPPER & HOPPER LID TO HAVE MIRROR FINISH EXTERIOR & 2B FINISH INTERIOR UNLESS NOTED OTHERWISE.
- SCALE TO BE MILD STEEL PAINTED GREY (RAL 7035) ENAMEL OVER RED OXIDE PRIMER/UNFINISHED ALUMINUM UNLESS NOTED OTHERWISE.
- WEIGHT: 245 kg [540 lb] APPROX.
- INGREDIENT: CARBON (POWDER)
- BULK DENSITY: 28 - 31 lbs./cu.ft.
- FEED RATE: 3,300 lbs./hr TYP.
- JET FILTER PNEUMATIC CIRCUIT REQUIRES 60 PISG OF CLEAN, DRY AIR.

THIS DRAWING IN DETAIL AND DESIGN IS THE PROPERTY OF BRABENDER TECHNOLOGIE INC. AND IS LOANED WITH THE UNDERSTANDING THAT IT IS NOT TO BE USED IN ANY WAY THAT IS HARMFUL TO BRABENDER TECHNOLOGIE INC. AND IS TO BE RETURNED UPON REQUEST.



REVISIONS				TITLE
No.	DATE	BY	APPD	
A	08/18/16	RI	DW	ISSUED FOR APPROVAL
PROJECT TYPE				BRABENDER TECHNOLOGIE SIN WO26285/1
STANDARD DWG No.		DRAWN BY	RI	DATE 8/18/2016
FILE NUMBER		APPROVED BY	DATE	SCALE 1:15
26285M01		26285-M1		SHT 1 OF 1