

**SCOTT MODEL 6011 INDIRECT DRYER NOTES:**

60"x132" INTERNAL DIMENSION, 165 CU.FT. MIXING & DRYING CAPACITY  
 3/8" MIXER TUBE WITH 1/2" ENDPLATES  
 316 STAINLESS STEEL CONSTRUCTION (PRODUCT CONTACT)  
 CARBON STEEL CONSTRUCTION (NON PRODUCT CONTACT)  
 EXTERIOR FINISH: PAINTED STEEL-IT  
 INTERIOR FINISH: MILL FINISH ON INTERIOR

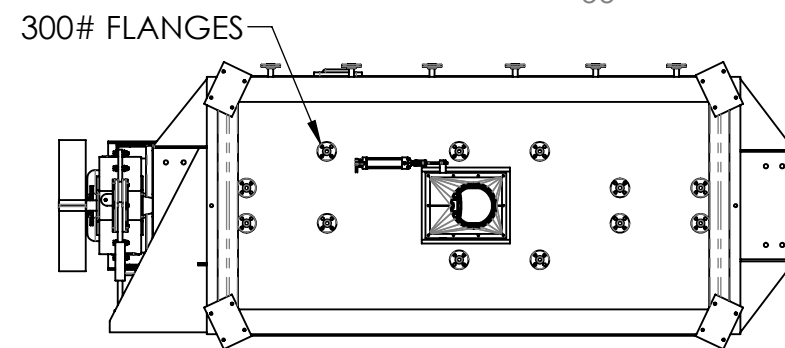
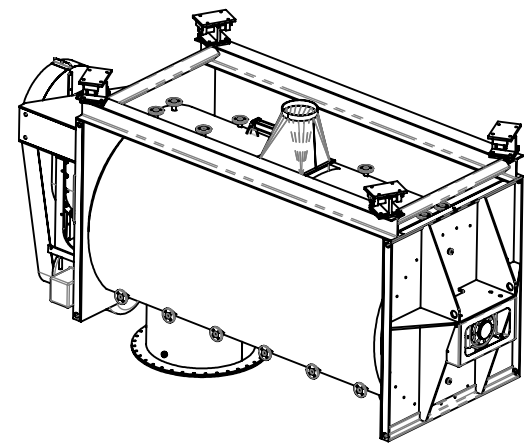
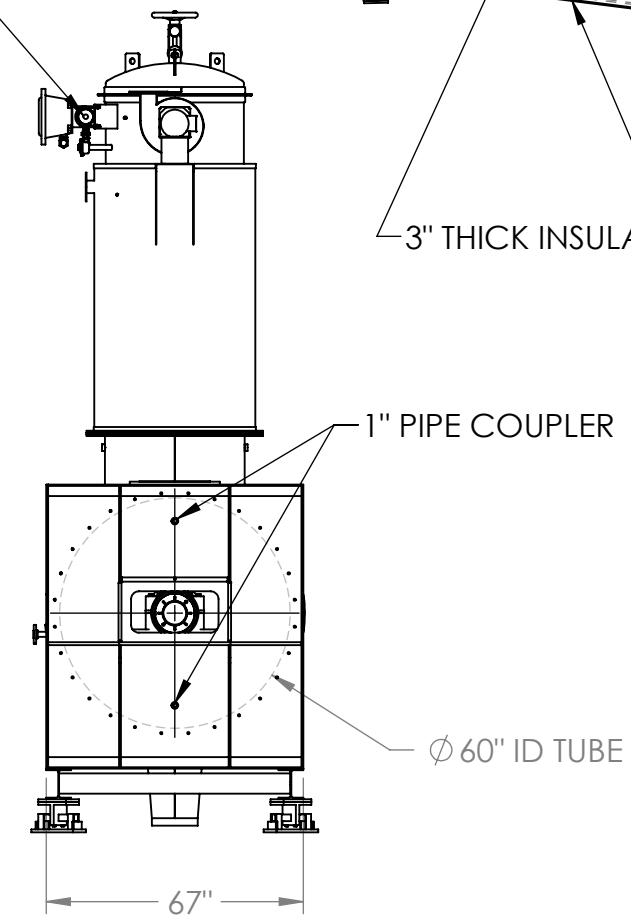
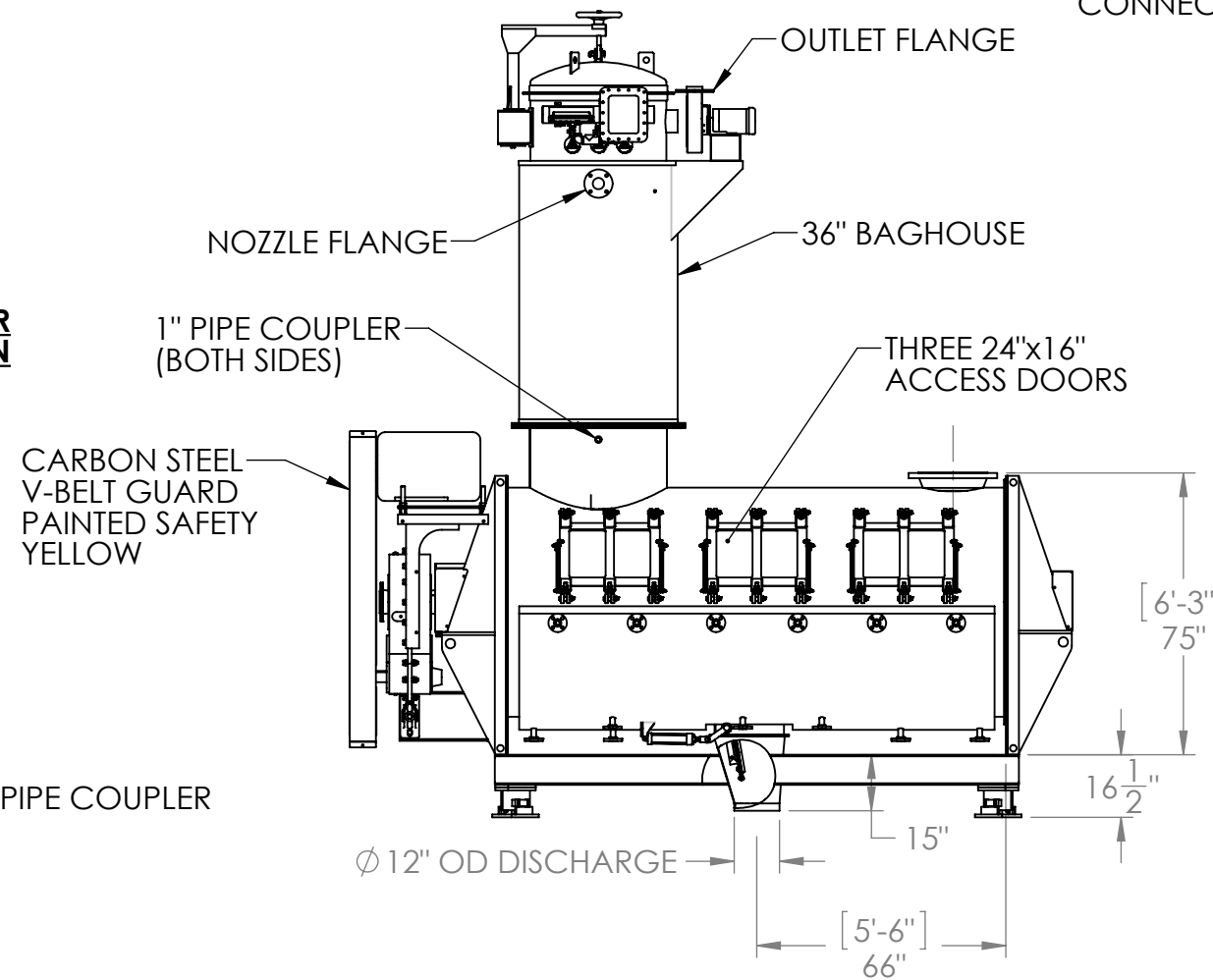
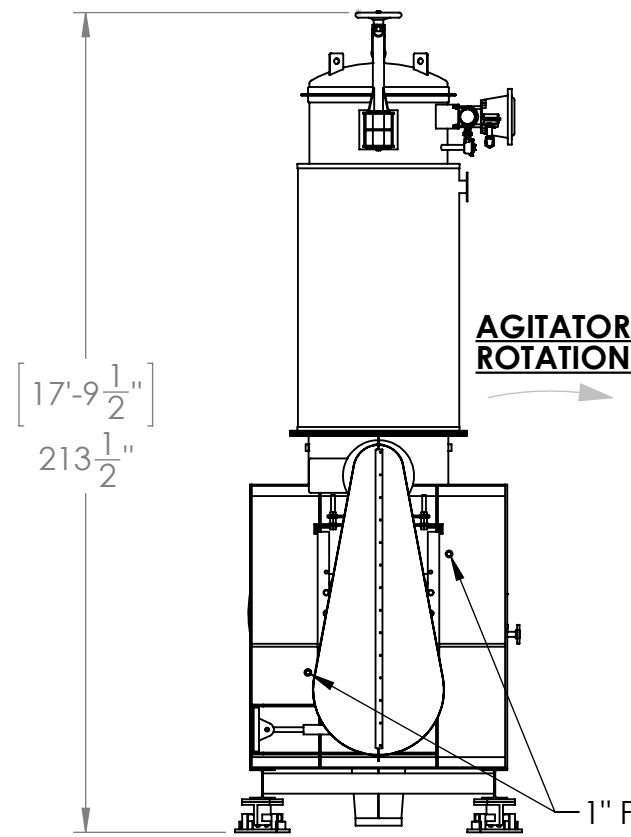
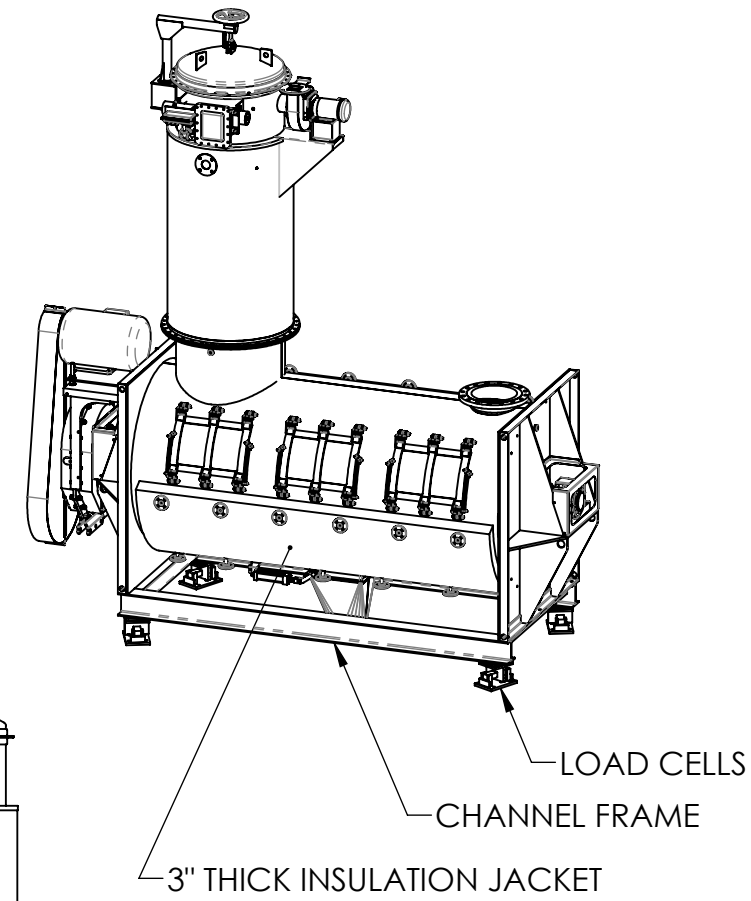
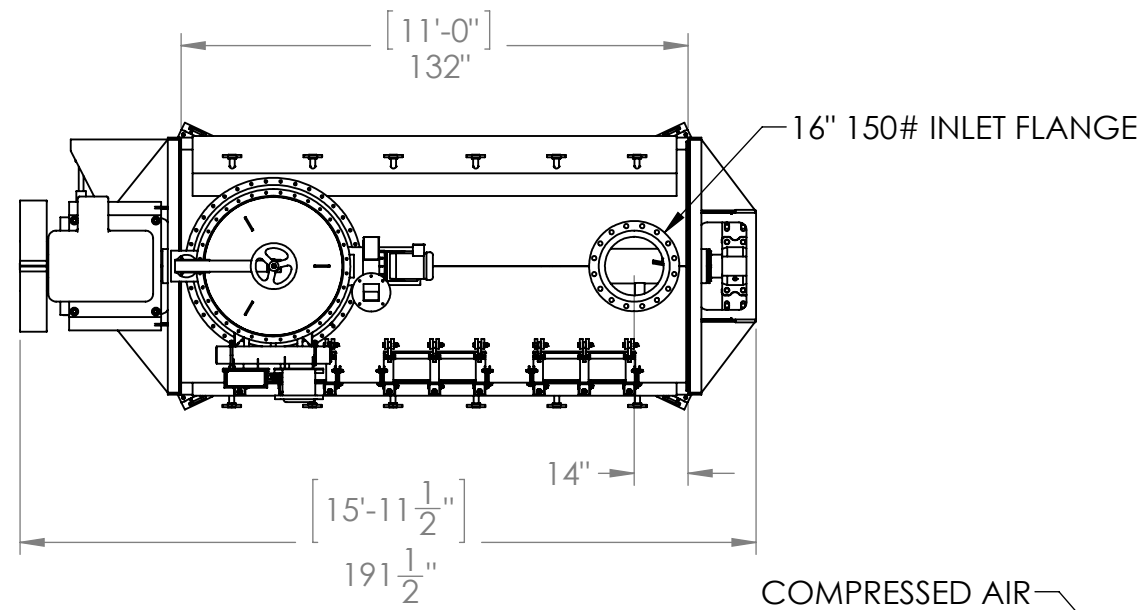
75 HP MOTOR TEFC 480V/60Hz  
 75 HP SHAFT MOUNT DODGE REDUCER TA10507H25  
 SHAFT FINAL SPEED: 25 RPM

AGITATOR: 9" SOLID SHAFT W/WELDED ON 2-1/2" SUPPORT POSTS  
 W/BOLT ON PADDLES

DISCHARGE: 10" DISCHARGE W/AIR ACTUATED FLUSH MOUNT PLUG GATE

BEARINGS: 6-7/16" ISAF DRIVE END, 5-15/16" ISAF IDLE END  
 7-RING PACKING GLAND SEAL WITH 1/2" SQ. GRAPHITE PACKING

HEATING JACKET:  
 HOT OIL JACKET (90 PSI) ASME, 12 ZONE DESIGN  
 (12) 1" 300 LB INLET FLANGES & (12) 1" 300 LB DISCHARGE FLANGES



**CUSTOMER: ENVIRAPAC MONTICELLO**  
**QUOTE NUMBER: 16-0022DREV1**

**PROPRIETARY AND CONFIDENTIAL**  
 THIS DRAWING AND ALL DESIGNS, DETAILS, INVENTIONS OR DEVELOPMENTS COVERED THEREBY ARE CONFIDENTIAL AND THE EXCLUSIVE PROPERTY OF SCOTT EQUIPMENT COMPANY WHICH RESERVES ALL PATENTS OR OTHER RIGHTS. COPYING, REPRODUCTION OR DUPLICATION, IN WHOLE OR IN PART, IS FORBIDDEN UNLESS EXPRESSLY AUTHORIZED BY SCOTT EQUIPMENT COMPANY. THIS DRAWING AND ANY SUCH COPIES SHALL BE RETURNED WHEN REQUESTED AND USED SUBJECT TO ABOVE CONDITIONS ONLY ON AUTHORIZED COMPANY WORK.

UNLESS OTHERWISE SPECIFIED:  
 DIMENSIONS ARE IN INCHES  
 TOLERANCES:  
 FRACTIONAL: ±  
 ANGULAR: MACH ±1°  
 BEND ±1°  
 TWO PLACE DECIMAL ±.03  
 THREE PLACE DECIMAL ±.010  
 JOB NO. 16-198D  
 MATERIAL: SEE PARTS  
 FINISH:  
**DO NOT SCALE DRAWING**

NAME	DATE
ACT	8/26/2016
ENG APPR	
SALES APPR	

604 5th Avenue NW  
 New Prague, MN 56071  
 952-758-2591

**SCOTT**  
 EQUIPMENT COMPANY  
**TITLE:**  
 6011 INDIRECT DRYER

SIZE	DWG NUMBER	REV
<b>B</b>	16198D INDIRECT DRYER	<b>E</b>

SCALE: 1:50 WEIGHT: 16723.4 SHEET 1 OF 1

