

**EXCELSIOR ENGINEERING LTD.
VENDOR DOCUMENT REVIEW**

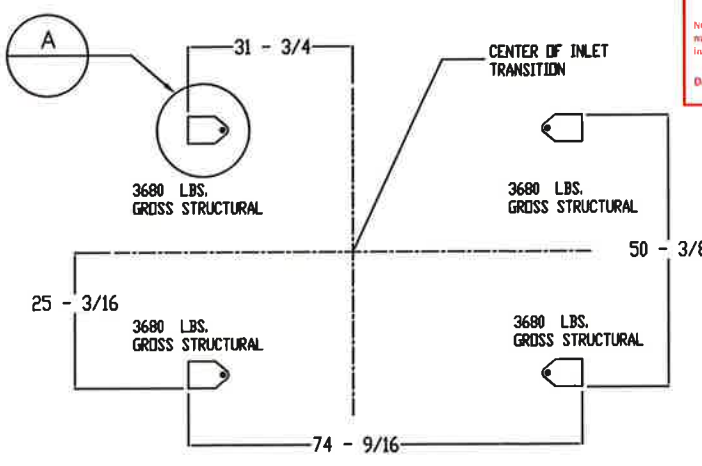
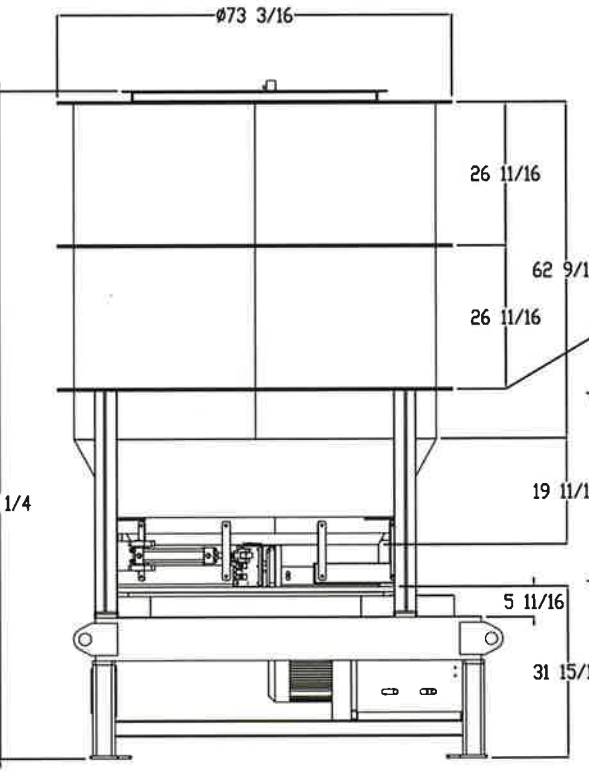
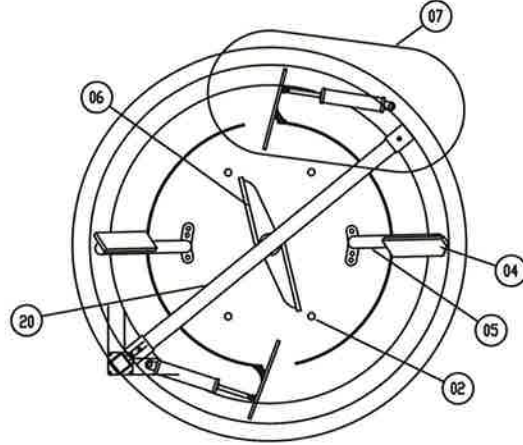
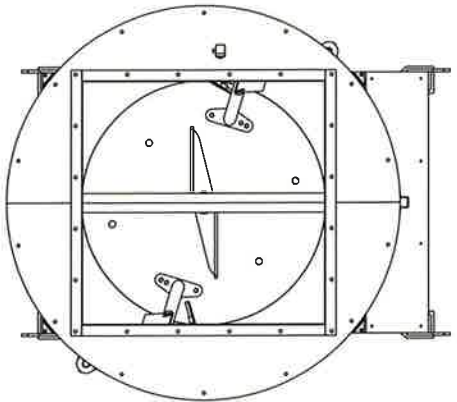
- V1- CORRECT AND RESUBMIT; WORK MAY NOT PROCEED
- V2- CORRECT AND RESUBMIT; WORK MAY PROCEED
- V3- RECEIVED AS IS; FOR INFORMATION ONLY
- V4- ACCEPTED FOR CONSTRUCTION/FABRICATION; SUBJECT TO INCORPORATION OF ANY COMMENTS ACCEPTED AS FINAL SUBMISSION
- V5-

NOTE: This review does not relieve the vendor/contractor from their due diligence, nor their responsibility for errors in design/fabrication or the variation/delisting in conformance with the contract and applicable requirements.

DATE: 11/17/15 PRINT: H. (Signature) SIGN: (Signature)

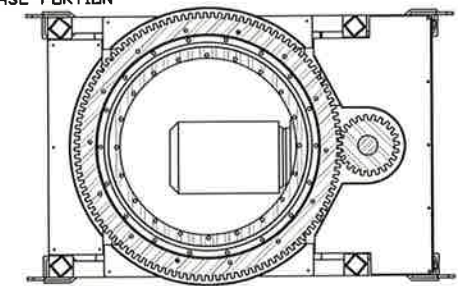
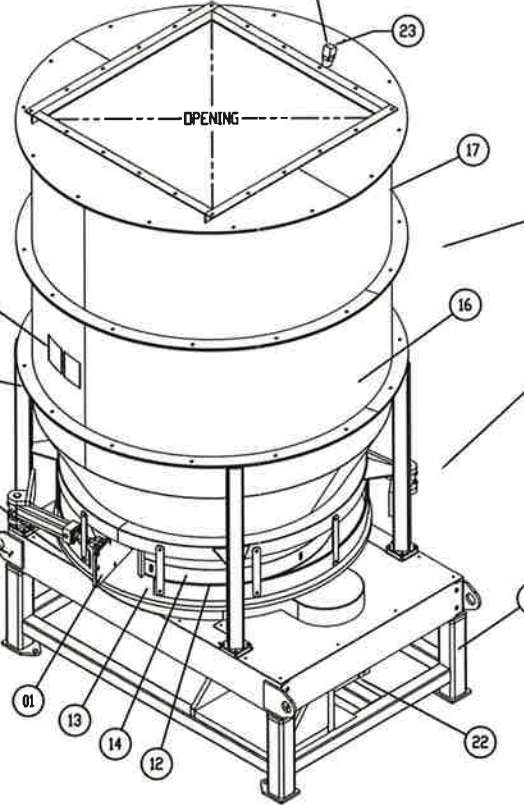
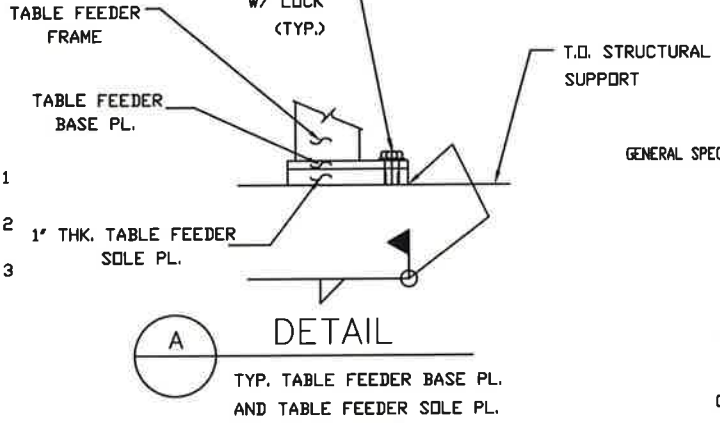
MKD	QTY	DESCRIPTION
01	1	TABLE PLATE
02	4	AGITATOR PINS
03	2	DISCHARGE BLADE
04	2	SIDE SCRAPER BLADE
05	2	SIDE SCRAPER ARM
06	2	CENTER SCRAPER BLADE
07	2	DISCHARGE BLADE ACTUATOR ASSEMBLY
12	10	OUTER BAND SUPPORT BARS
13	1	OUTER BAND
14	1	INNER BAND
16	1	INNER CROSSBAR ASSEMBLY
17	1	TABLE FEEDER TRANSITION ASSEMBLY
19	1	BASE FRAME ASSEMBLY
20	1	INTERNAL CROSSBAR BUSHING & PIN
21	1	SET OF SAFETY SIGNS / DECALS
22	1	TABLE DRIVE GEARMOTOR
23	1	OPTICAL LEVEL SENSOR

(*) DENOTES RECOMMENDED SPARE PART
PLEASE REFERENCE
DWG #, REV #, MKD# & PART DESCRIPTION
WHEN ORDERING PARTS.



EXCELSIOR ENGINEERING LTD.

SQUAD CHECK # SQV-0004-007
EXC # 4397KEY-POP-0004-GAD-014
TAG # TBA
DESIGN LEAD CHAD
RESPONSIBLE ENGINEER NDN/JI
REVIEW DUE DATE 2015.07.07



- GENERAL SPECIFICATIONS:**
- ONE (1) TABLE FEEDER TO BE PROPOSED IN ACCORDANCE W/ THE FOLLOWING SPECIFICATIONS:
 - WORKING CAPACITY OF APPROXIMATELY 105 CUFT (EXACT WORKING CAPACITY DEPENDS UPON THE ANGLE OF REPOSE FOR THE MATERIALS AND METHOD OF CHARGING THE TABLE FEEDER.)
 - APPROX. MACHINE WEIGHT: 6100 LB. (LIFTING PURPOSES ONLY)
 - APPROX. CHUTE WEIGHT: 450 LB.
 - TOTAL CAPACITY OF 159 CUFT.
 - MOTOR SUPPLY VOLTAGE: 550 VAC / 3 PHASE / 60 Hz
 - MOTOR HP RATING: 12.5 HP
 - ALL PARTS OF THE TABLE FEEDER THAT ARE IN CONTACT WITH THE MATERIALS BEING FED BY THE TABLE FEEDER ARE TO BE CONSTRUCTED OUT OF CARBON STEEL. ALL OTHER PARTS TO BE MADE OUT OF CARBON STEEL.
 - THE TABLE IS TO BE MACHINED OF CARBON STEEL PLATE TO A FINISHED DIMENSION OF 60" OD.
 - THE CONE AND EXTENSION IS TO BE REINFORCED TO RESIST DEFORMATION UNDER LOAD.
 - THE CENTER PLOW POST FOR THE TEE SUPPORTS IS TO BE MANUFACTURED WITH A LEFT-HAND THREAD IN THE TABLE PLATE.
 - THE SIDE WALL SCRAPER IS TO BE REINFORCED AND EXTEND THE FULL LENGTH OF THE CONE SECTION.
 - PREP, PRIME AND PAINT EXTERNAL METAL SURFACES IN ACCORDANCE W/ K1 STANDARD. SHERWIN WILLIAMS SYSTEM 4000 POLANE B POLYURETHANE ENAMEL FINISH FINISH COLOR GYPSUM (SW4026)

600	MIXER # 1 =	600T - TOP PORTION	= TF6013
		600B - BASE PORTION	
610	MIXER # 2 =	610T - TOP PORTION	= TF6014
		610B - BASE PORTION	
620	MIXER # 3 =	620T - TOP PORTION	= TF6015
		620B - BASE PORTION	

NOTICE

THIS IS A REPRODUCTION OF A COMMERCIAL DRAWING OF KERCHER INDUSTRIES INC. AND IS ISSUED FOR USE ONLY FOR AN AUTHORIZED JOB USING EQUIPMENT SUPPLIED BY KERCHER INDUSTRIES. THIS DRAWING IS THE PROPERTY OF AND CONTAINS CONFIDENTIAL, PROPRIETARY INFORMATION OF KERCHER INDUSTRIES INC. AND SHALL NOT BE DISCLOSED, USED, COPIED OR REPRODUCED EITHER WHOLLY OR IN PART, EXCEPT IN CONNECTION WITH SUCH USE AND WITH THE PRIOR WRITTEN CONSENT OF KERCHER INDUSTRIES INC. THIS DRAWING MUST NOT BE USED FOR CONSTRUCTION OR FABRICATION UNTIL SIGNED, CHECKED AND ISSUED AS SUCH.

THE FOLLOWING TOLERANCES APPLY UNLESS OTHERWISE NOTED.

XX	= ± .02
XXX	= ± .010
XXXX	= ± .002
XXXXX	= ± .0005
X.1/16	= ± 1/16

REVISIONS

NO.	DATE	DESCRIPTION	DRN BY	APPROV
0	4/8/14	INITIAL ISSUE	JFR	
1	7/11/14	ADDITION OF LIFTING LUGS & LIFT WEIGHT	MCW	
2	08/21/14	ADD TOP FLANGE & LEVEL SENSOR	JFR	
3	03/20/15	ADDED SHIPPING / PART NUMBERS	LBS	

LANCASTER PRODUCTS
KERCHER INDUSTRIES, INC.
908 Mechanic Street - Lebanon, PA 17046

60 INCH ROTARY TABLE FEEDER
PROPOSED PRODUCT ARRANGEMENT
SULVARIS PROJECT

PLOT SCALE: (16) 3/4"=1'-0" DWG: SULVARIS-7153-TF60-GA-100 REV 03