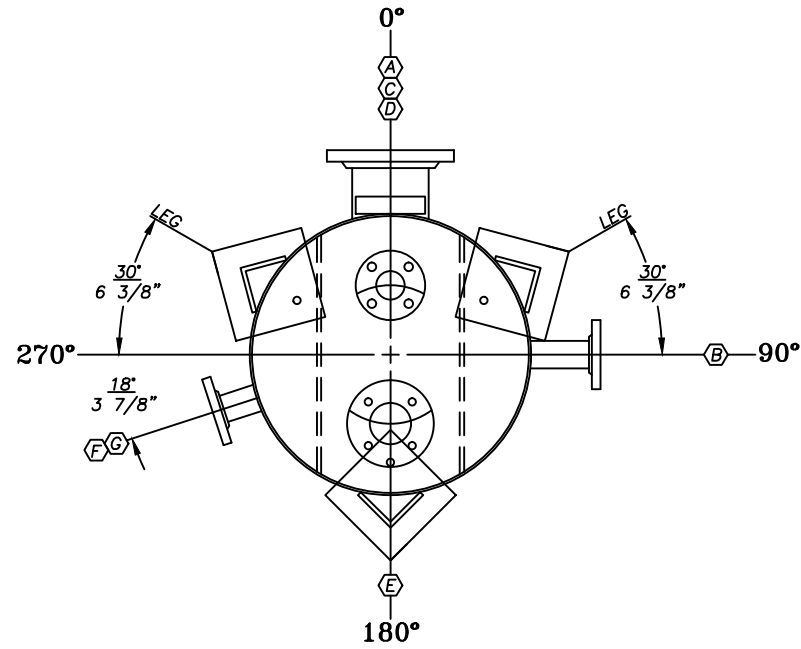
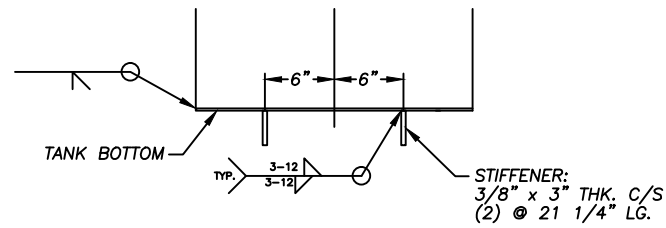


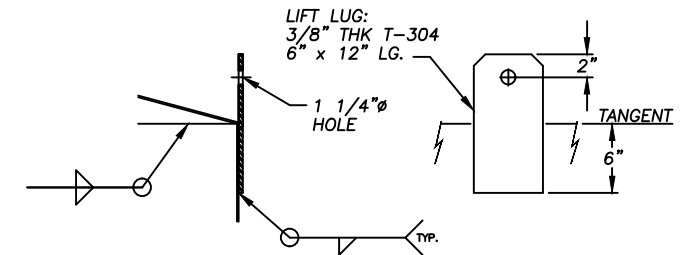
NORTH ↑



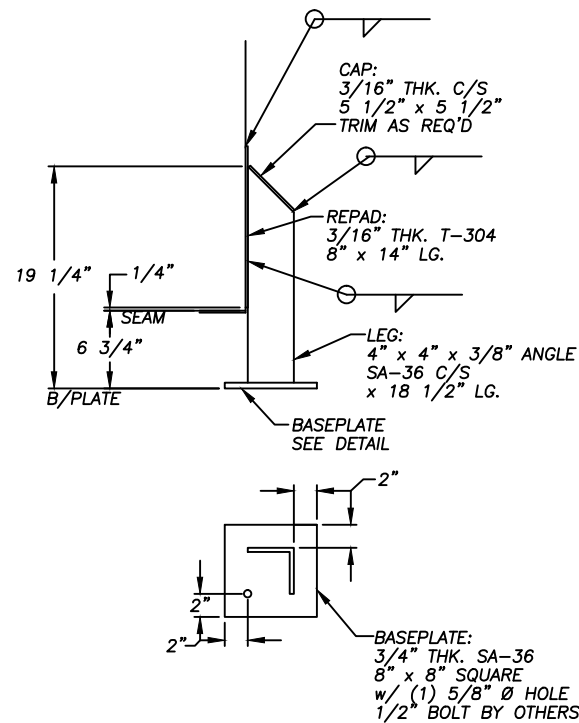
ORIENTATION VIEW  
SCALE: 1 1/2" = 1'-0"



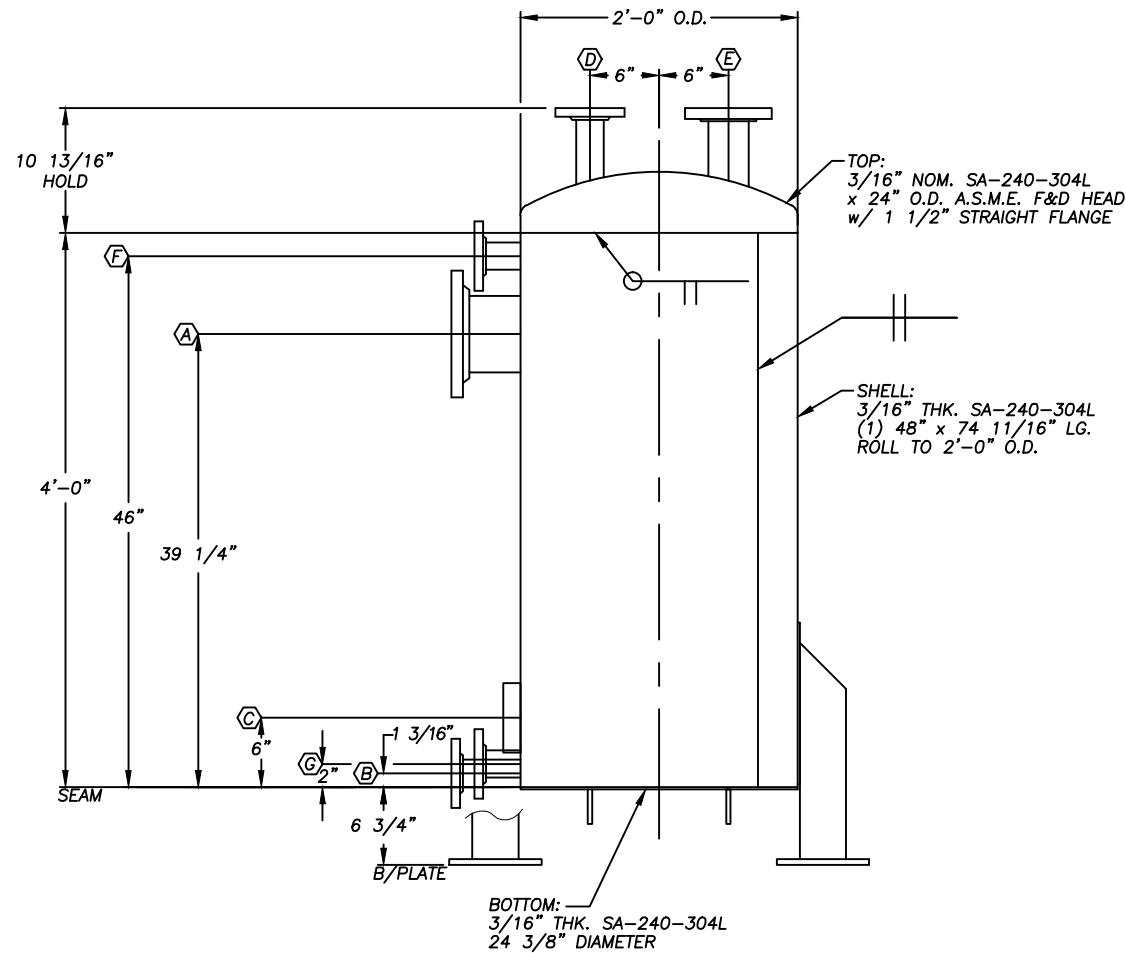
BOTTOM/STIFFENER DETAIL  
SCALE: 1 1/2" = 1'-0"



STANDARD LIFT LUG DETAIL  
SCALE: 1 1/2" = 1'-0" (2) REQ'D



LEG DETAIL  
SCALE: N.T.S. (3) REQ'D



ELEVATION VIEW  
SCALE: 1 1/2" = 1'-0"

<b>WINBCO</b> OTTUMWA, IOWA	
SERIAL NO. 15163	YEAR BUILT 2015
CUSTOMER CONTROL NO. TK-2404	
SERVICE AMINE EXTRACTION RECOVERY STANDPIPE	
CAP.-NOM. 94 GAL	FULL 94 GAL
EMPTY WT. 1,378 LBS	MAT'L SA240T304L
DIAMETER 2 FT 0 IN. D.	HEIGHT 4 FT 0 IN.
DESIGN S.G. 1.2	PRESS. 2 OZ./SQ. IN.
NAMEPLATE	

NOZZLE SCHEDULE

ITEM	SIZE	QTY	DESCRIPTION	PROJECTION	ELEVATION	ORIENTATION
A	6"	1	SIDE INLET NOZZLE	6"	39 1/4"	0°
B	2"	1	DISCHARGE NOZZLE	6"	1 3/16"	90°
C	2"	1	TEMPERATURE INDICATOR PAD FLANGE	-	6"	0°
D	2"	1	LEVEL TRANSMITTER NOZZLE	6"	TOP	0°
E	3"	1	VENT NOZZLE	6"	TOP	180°
F	2"	1	LEVEL INDICATOR NOZZLE	4"	46"	252°
G	2"	1	LEVEL INDICATOR NOZZLE	4"	2"	252°

- NOTES:
- TANK SHELL ONLY TO BE DESIGNED IN ACCORDANCE WITH API-650 APPENDIX 'S'. RADIOGRAPHY NOT REQUIRED.
  - ALL EXTERNAL WELDS TO BE CLEANED TO REMOVE SLAG AND SPATTER & MARGIN BUFFED AS PER WINBCO WELD FINISH STANDARD #2
  - ALL INTERNAL WELDS TO BE CLEANED TO REMOVE SLAG AND SPATTER ONLY AS PER WINBCO WELD FINISH STANDARD #2.
  - PRIME PAINT EXTERNAL CARBON STEEL SURFACES WITH RUST-INHIBITIVE GRAY PRIMER.
  - FORGED CARBON STEEL FLANGES ARE SUPPLIED WITH BLACK PROTECTIVE COATING AS APPLIED BY MANUFACTURER.
  - PROVIDE STAINLESS STEEL NAMEPLATE WITH 4" STANDOFF.

CUSTOMER P.O. NUMBER - 95  
WINBCO JOB # 15163

**WINBCO**  
AN ISO-9002 COMPANY  
1200 EAST MAIN  
OTTUMWA, IOWA 52501

(1) UNIT REQUIRED  
CAPACITY NOM: 94 GAL FULL: 94 GAL  
WEIGHT EMPTY: 1,378 LBS FULL: 2,318 LBS  
DESIGN SG: 1.2 PRESS: 2 OZ./SQ. IN.  
CORR. ALLOW: N/A TEMPERATURE: 160° F  
IBC 2012 SEISMIC: S<sub>g</sub> = .093g IBC 2012 WIND: 150 MPH EXPOSURE C  
S<sub>1</sub> = .049g

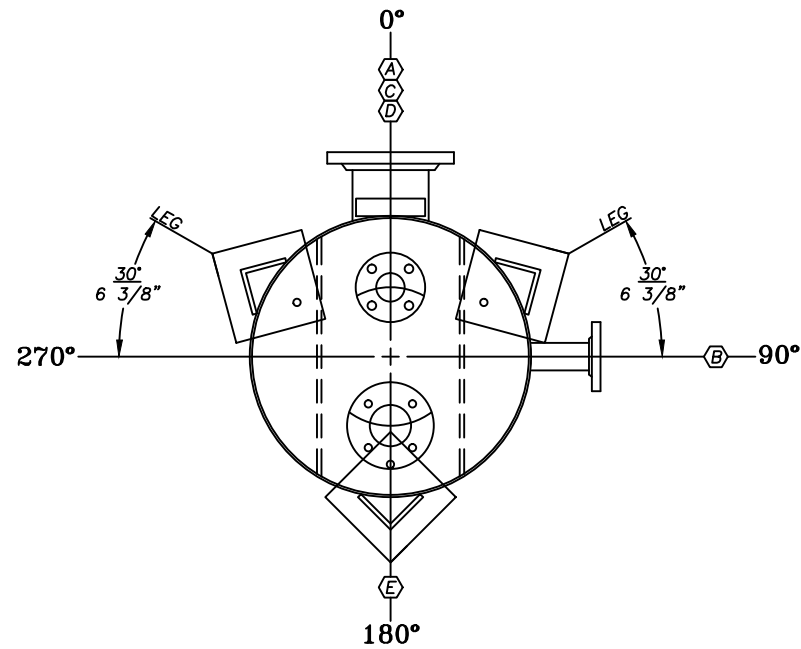
DESCRIPTION AMINE EXTRACTION RECOVERY STANDPIPE  
CUSTOMER **VIRIDIA RACELAND, LA.**

ADD 'F' & 'G'	SP 03/01/17	DR. BY S. PENDARVIS	CHK. BY	DATE
FINAL AS BUILT	SP 08/09/16	DATE	CHK. BY	DATE
'D' WAS @ 180° / 'E' WAS @ 0° ADD HOLD DIMENSION	SP 10/7/15	SCALE NOTED	DATE 18 SEP 15	DRWG. #
CHANGE	BY DATE	REVISION # TK-2404		

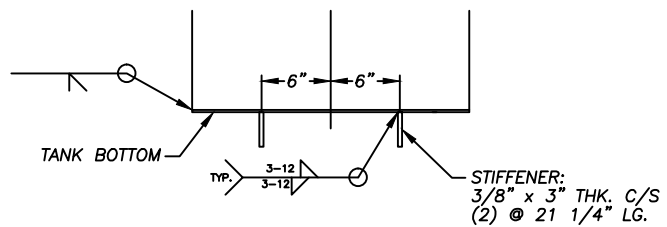
**WINBCO**  
CERTIFIED DRAWING  
AS ISSUED FOR CONSTRUCTION  
BY: S. PENDARVIS DATE: 10/15/2015

D-15163-1

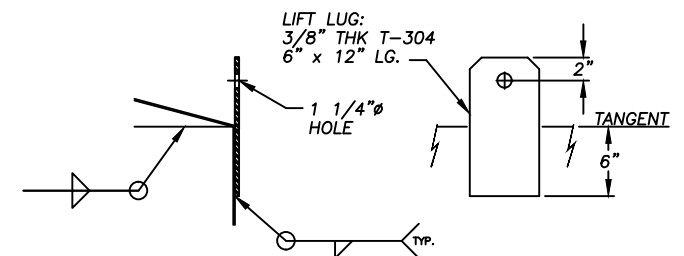
NORTH ↑



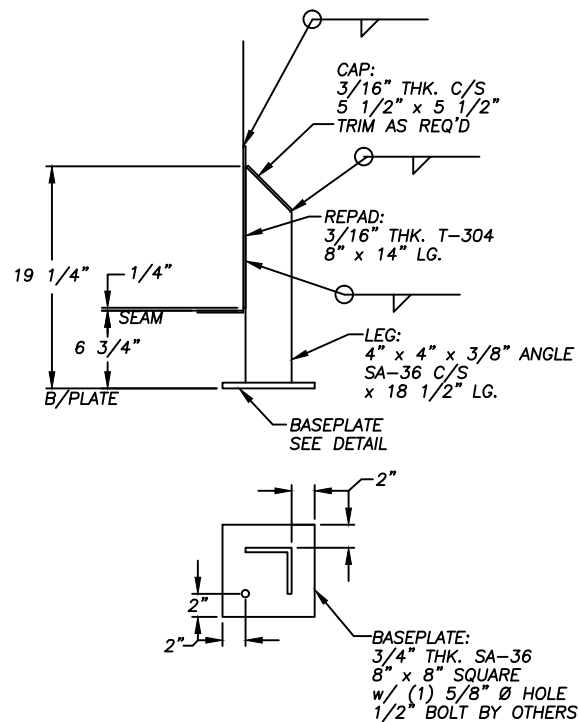
ORIENTATION VIEW  
SCALE: 1 1/2" = 1'-0"



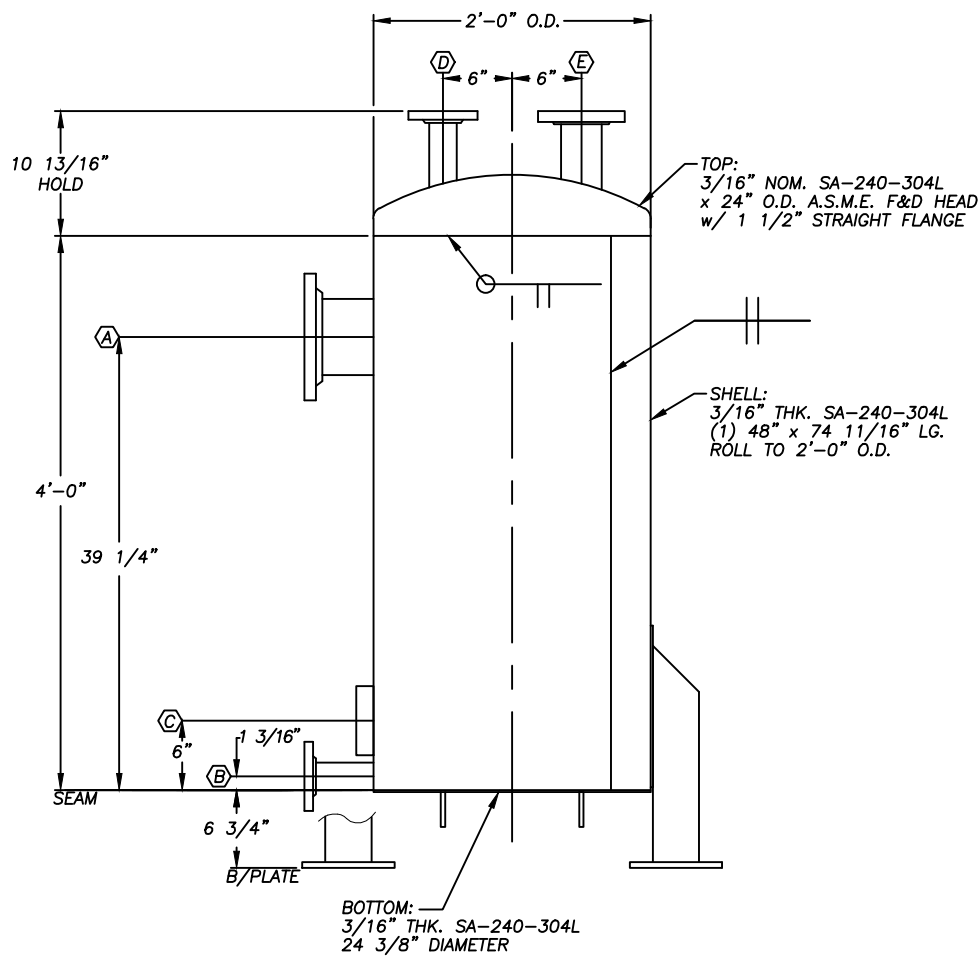
BOTTOM/STIFFENER DETAIL  
SCALE: 1 1/2" = 1'-0"



STANDARD LIFT LUG DETAIL  
SCALE: 1 1/2" = 1'-0" (2) REQ'D



LEG DETAIL  
SCALE: N.T.S. (3) REQ'D



ELEVATION VIEW  
SCALE: 1 1/2" = 1'-0"

<b>WINBCO</b> OTTUMWA, IOWA	
SERIAL NO. 15163	YEAR BUILT 2015
CUSTOMER CONTROL NO. TK-2404	
SERVICE AMINE EXTRACTION RECOVERY STANDPIPE	
CAP.-NOM. 94 GAL	FULL 94 GAL
EMPTY WT. 1,378 LBS	MAT'L SA240T304L
DIAMETER 2 FT O.D.	HEIGHT 4 FT 0 IN
DESIGN S.G. 1.2	PRESS. 2 OZ./SQ. IN.
NAMEPLATE	

NOZZLE SCHEDULE						
ITEM	SIZE	QTY	DESCRIPTION	PROJECTION	ELEVATION	ORIENTATION
A	6"	1	SIDE INLET NOZZLE	6"	39 1/4"	0°
B	2"	1	DISCHARGE NOZZLE	6"	1 3/16"	90°
C	2"	1	TEMPERATURE INDICATOR PAD FLANGE	-	6"	0°
D	2"	1	LEVEL TRANSMITTER NOZZLE	6"	TOP	0°
E	3"	1	VENT NOZZLE	6"	TOP	180°

- NOTES:
- TANK SHELL ONLY TO BE DESIGNED IN ACCORDANCE WITH API-650 APPENDIX 'S'. RADIOGRAPHY NOT REQUIRED.
  - ALL EXTERNAL WELDS TO BE CLEANED TO REMOVE SLAG AND SPATTER & MARGIN BUFFED AS PER WINBCO WELD FINISH STANDARD #2
  - ALL INTERNAL WELDS TO BE CLEANED TO REMOVE SLAG AND SPATTER ONLY AS PER WINBCO WELD FINISH STANDARD #2.
  - PRIME PAINT EXTERNAL CARBON STEEL SURFACES WITH RUST-INHIBITIVE GRAY PRIMER.
  - FORGED CARBON STEEL FLANGES ARE SUPPLIED WITH BLACK PROTECTIVE COATING AS APPLIED BY MANUFACTURER.
  - PROVIDE STAINLESS STEEL NAMEPLATE WITH 4" STANDOFF.

CUSTOMER P.O. NUMBER - 95  
WINBCO JOB # 15163

(1) UNIT REQUIRED  
CAPACITY NOM: 94 GAL FULL: 94 GAL  
WEIGHT EMPTY: 1,378 LBS FULL: 2,318 LBS  
DESIGN SG: 1.2 PRESS: 2 OZ./SQ. IN.  
CORR. ALLOW: N/A TEMPERATURE: 160° F  
IBC 2012 SEISMIC: S<sub>s</sub>-.093g IBC 2012 WIND: 150 MPH EXPOSURE C  
S<sub>1</sub>-.049g

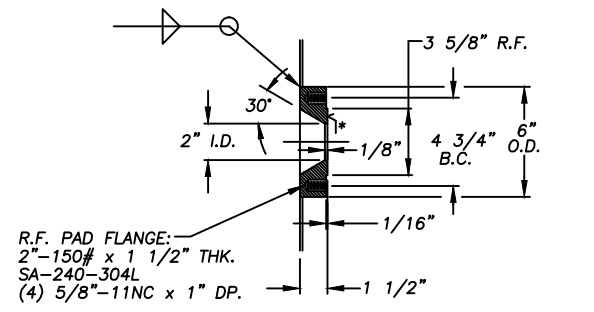
**WINBCO**  
AN ISO-9002 COMPANY  
1200 EAST MAIN  
OTTUMWA, IOWA 52501

DESCRIPTION: AMINE EXTRACTION RECOVERY STANDPIPE  
CUSTOMER: VIRIDIA RACELAND, LA.

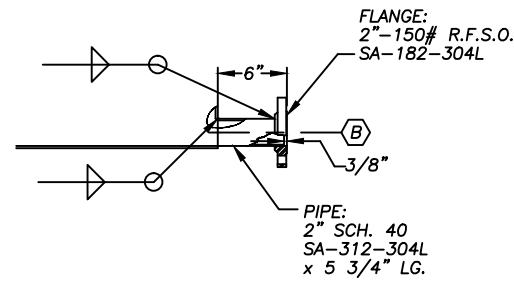
**WINBCO**  
CERTIFIED DRAWING  
AS ISSUED FOR CONSTRUCTION  
BY: S. PENDARVIS DATE: 10/15/2015

DR. BY S. PENDARVIS	CHK. BY	DATE
DATE	DATE	DATE
DATE 10/7/15	SCALE NOTED	DATE 18 SEP 15
SYMBOL CHANGE	BY DATE	REV. # TK-2404

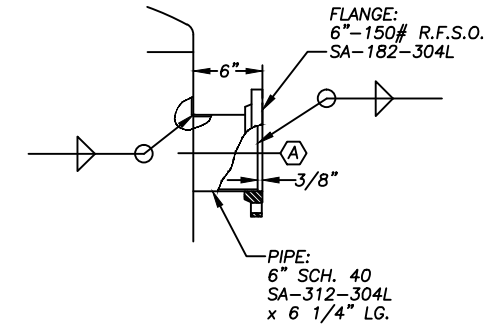
D-15163-1



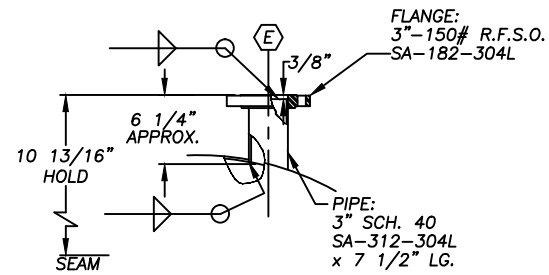
\*=SERRATED FINISH PER ANSI B16.5, 6.3.4.1  
**2" BEVELED PAD FLANGE DETAIL** (C)  
 SCALE: N.T.S.



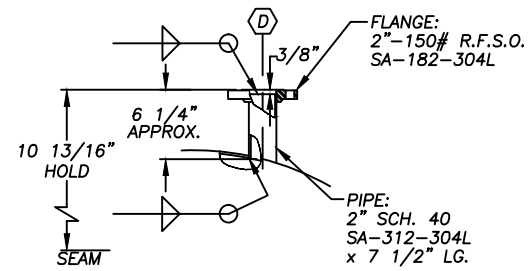
**2" SHELL NOZZLE DETAIL** (B)  
 SCALE: 1 1/2"=1'-0"



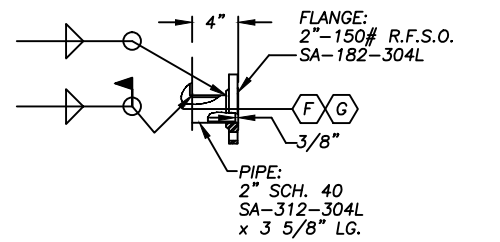
**6" SHELL NOZZLE DETAIL** (A)  
 SCALE: 1 1/2"=1'-0"



**3" TOP NOZZLE DETAIL** (E) (A)  
 SCALE: 1 1/2"=1'-0"



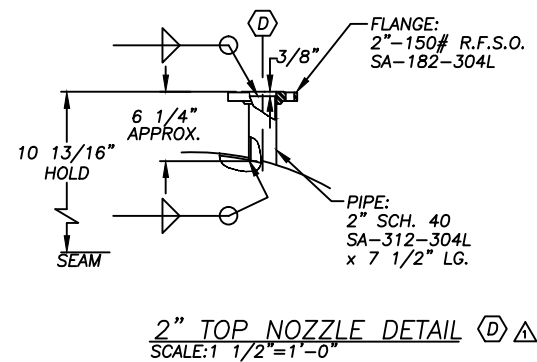
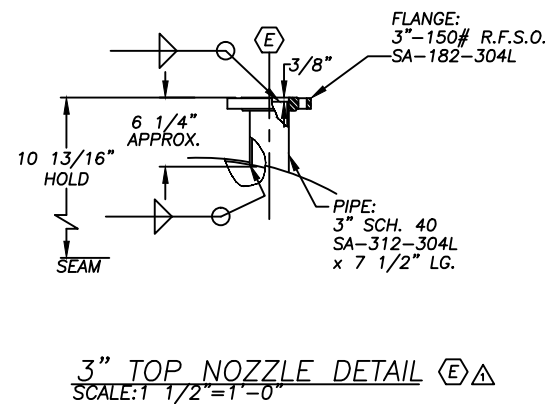
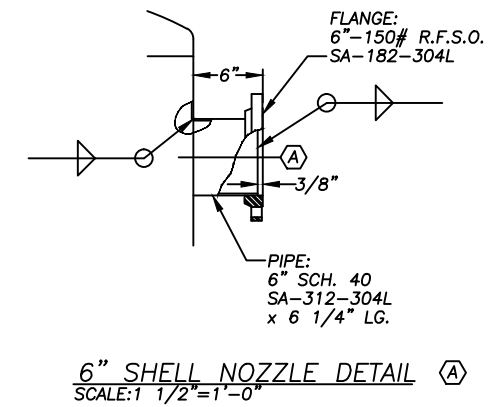
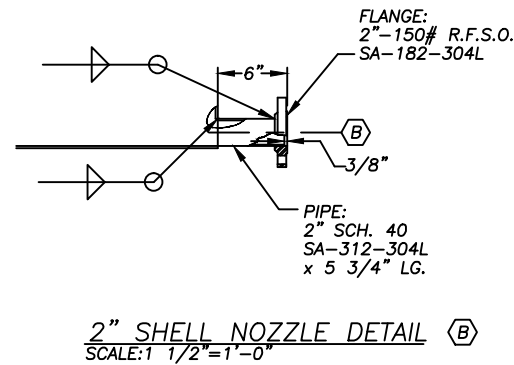
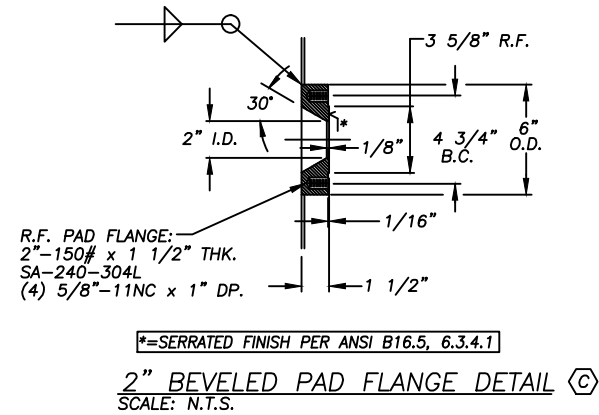
**2" TOP NOZZLE DETAIL** (D) (A)  
 SCALE: 1 1/2"=1'-0"



**2" SHELL NOZZLE DETAIL** (F) (G) (A)  
 SCALE: 1 1/2"=1'-0"

**WINBCO**  
 CERTIFIED DRAWING  
 AS ISSUED FOR CONSTRUCTION  
 BY: S. PENDARVIS DATE: 10/15/2015

CUSTOMER P.O. NUMBER - 95				<b>WINBCO</b> AN ISO-9002 COMPANY	
WINBCO JOB # 15163				1200 EAST MAIN OTTUMWA, IOWA 52501	
(1) UNIT REQUIRED		DESCRIPTION		<b>FITTING DETAILS</b>	
		CUSTOMER		<b>VIRDIA RACELAND, LA.</b>	
	ADD 'F' & 'G'	SP	03/01/17	DR. BY	S. PENDARVIS
	FINAL AS BUILT	SP	08/09/16	DATE	
	ADD HOLD DIMENSION TO 'D,E'	SP	10/7/15	SCALE	NOTED
	CHANGE	BY	DATE	DATE	18 SEP 15
SYM		REVISION #		DRAW. #	
		TK-2404		D-15163-2	



**WINBCO**  
CERTIFIED DRAWING  
AS ISSUED FOR CONSTRUCTION  
BY: S. PENDARVIS DATE: 10/15/2015

CUSTOMER P.O. NUMBER - 95			
WINBCO JOB # 15163		AN ISO-9002 COMPANY	
(1) UNIT REQUIRED		1200 EAST MAIN OTTUMWA, IOWA 52501	
DESCRIPTION		FITTING DETAILS	
CUSTOMER		VIRDIA RACELAND, LA.	
DR. BY	DATE	CHK. BY	DATE
S. PENDARVIS	10/7/15		
ADD HOLD DIMENSION TO "D,E"	SP 10/7/15	SCALE	NOTED
CHANGE	BY DATE	REV. #	TK-2404
		DRWG. #	D-15163-2