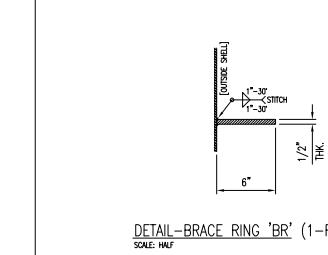
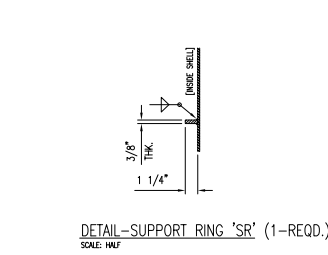
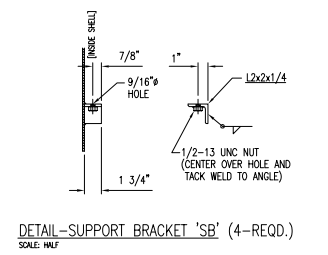
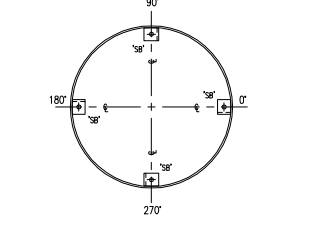
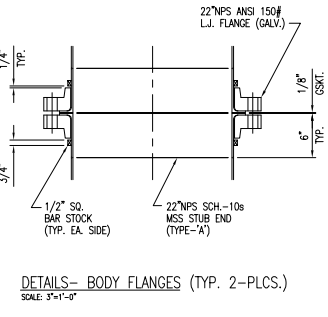
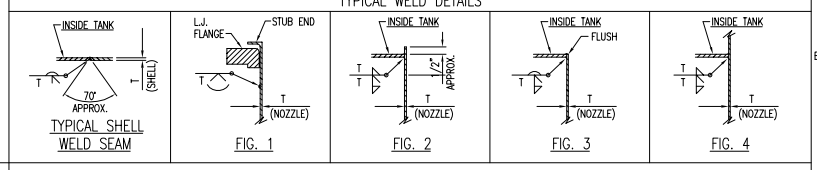


CONNECTION SCHEDULE					
CONN.	DESCRIPTION	QTY.	SIZE	CONNECTION RATING	TYPICAL WELD DETAIL
A	INSPECTION PORT W/BLIND FLANGE	1	10" NPS	ANSI 150# L.J. FLANGE (GALV.) W/ SCH-10s MSS-TYPE 'A' STUB END	FIG. 1 FIG. 2
B	INSPECTION PORT W/BLIND FLANGE	1	8" NPS	ANSI 150# L.J. FLANGE (GALV.) W/ SCH-10s MSS-TYPE 'A' STUB END	FIG. 1 FIG. 2
C	STEAM INLET	1	6" NPS	ANSI 150# L.J. FLANGE (GALV.) W/ SCH-10s MSS-TYPE 'A' STUB END	FIG. 1 FIG. 2
D	VAPOR OUTLET	1	6" NPS	ANSI 150# L.J. FLANGE (GALV.) W/ SCH-10s MSS-TYPE 'A' STUB END	FIG. 1 FIG. 2
E	FEED INLET	1	4" NPS	ANSI 150# L.J. FLANGE (GALV.) W/ SCH-10s MSS-TYPE 'A' STUB END	FIG. 1 FIG. 2
F	PRODUCT OUTLET	1	3" NPS	ANSI 150# L.J. FLANGE (GALV.) W/ SCH-10s MSS-TYPE 'A' STUB END	FIG. 1 FIG. 2
G	VIEW PORT	1	4" NPS	ANSI 150# L.J. FLANGE (GALV.) W/ SCH-10s MSS-TYPE 'A' STUB END	FIG. 1 FIG. 2
H	PRESSURE TRANSMITTER	2	2" NPS	ANSI 150# L.J. FLANGE (GALV.) W/ SCH-10s MSS-TYPE 'A' STUB END	FIG. 1 FIG. 2
J	LEVEL TRANSMITTER	2	2" NPS	ANSI 150# L.J. FLANGE (GALV.) W/ SCH-10s MSS-TYPE 'A' STUB END	FIG. 1 FIG. 2
K	LEVEL SWITCH	2	2" NPS	ANSI 150# L.J. FLANGE (GALV.) W/ SCH-10s MSS-TYPE 'A' STUB END	FIG. 1 FIG. 2
L	TEMPERATURE TRANSMITTER	4	1" NPS	ANSI 150# L.J. FLANGE (GALV.) W/ SCH-10s MSS-TYPE 'A' STUB END	FIG. 1 FIG. 2
M	LEVEL INDICATOR	2	1" NPS	ANSI 150# L.J. FLANGE (GALV.) W/ SCH-10s MSS-TYPE 'A' STUB END	FIG. 1 FIG. 2
N	BASE DRAIN	1	1" NPS	ANSI 150# L.J. FLANGE (GALV.) W/ SCH-10s MSS-TYPE 'A' STUB END	FIG. 1 FIG. 2
P	BOTTOMS PUMP RE-CIRC.	1	3/4" NPS	ANSI 150# L.J. FLANGE (GALV.) W/ SCH-10s MSS-TYPE 'A' STUB END	FIG. 1 FIG. 2

DESIGN DATA			
CODE STAMPED	NO	MILL REPORTS REQUIRED	NO
DESIGN PRESSURE	14 PSIG INTERNAL, 1 PSIG EXTERNAL	CORROSION ALLOWANCE	NONE
DESIGN TEMPERATURE	300F	TYPE OF HEAD	SCH.10s PIPE CAP (0.218" WALL)
OPERATING PRESSURE	5 PSIG	HEAD THICKNESS	SCH.10s (0.218" WALL)
OPERATING TEMPERATURE	225F	SHELL THICKNESS	SCH.10s (0.218" WALL)
TEST	7.5 PSIG COMPRESSED AIR STATIC	SKIRT THICKNESS	---
ENVIRONMENTAL DESIGN	---	ESTIMATED WEIGHT, EMPTY (SHIPPING)	3,800 LBS. ±5%
INSULATION	Y	ESTIMATED WEIGHT, FULL OF WATER	10,600 LBS. ±5%

MATERIALS OF CONSTRUCTION			
ITEM	SPECIFICATION	ITEM	SPECIFICATION
SHELLS/HEADS/BASE PLATE	316L	EXTERNAL SUPPORTS/RINGS	SA-516 GR.70
INTERNAL SUPPORTS/RINGS	SA-240 - TYPE 316L	SHELL FLANGES	FLANGE
NOZZLES < 24"	SA-312 - TYPE 316L	FACER	---
NOZZLES > 24"	SA-403 - TYPE 316L	GASKETS	SHELL FLANGES 1/8" THK. TEFLON RING
FLANGE	SA-105 (GALV.), SA-182 316L (SEE SCHED.)	NOZZLES	1/8" THK. TEFLON RING
FACER / NECK	---	EXTERNAL FASTENERS	BOLTS / NUTS SA-193, GR. B7/SA-194, GR. 2H (PLATED)
FLANGE	---	WASHERS	F-436 (PLATED)
COUPLINGS	---	INTERNAL FASTENERS	SA-193, GR.88M/SA-194, GR.2M (304L SS)
INTERNAL FLANGES	SA-182 - TYPE 316L	WASHERS	SS316
INTERNAL PIPE	SA-312 - TYPE 316L, SCH-10s PIPE	INTERNALS (SCREENS / TRAYS)	316L SS - FREE ISSUED BY OTHERS



GENERAL NOTES:

- ALL WELDS SHALL BE CONTINUOUS AND FULL PENETRATION UNLESS OTHERWISE NOTED.
- TANK SHELL WELD SEAMS SHALL BE ORIENTED TO AVOID FOUR POINT WELDS.
- WELDS OF CARBON STEEL ELEMENTS TO THE STAINLESS STEEL VESSEL SHELL SHALL BE MADE WITH WELDING WIRE APPROPRIATELY SELECTED TO AVOID VESSEL SHELL MATERIAL CONTAMINATION.
- WETTED SYSTEMS REPRESENTATIVE SHALL WITNESS TESTING & INSPECT VESSEL PRIOR TO RELEASE FOR SHIPMENT.
- TOLERANCES--
 - SHELL / VESSEL
 - CONCENTRICITY (ROUNDNESS) SHALL BE ±1/16".
 - SHELL FLANGES SHALL HAVE BOLT HOLES STRADDLING MAJOR CENTERLINES (TWO-HOLE CENTERED).
 - NOZZLES
 - CONNECTIONS / NOZZLES SHALL BE SQUARE TO THE VESSEL WITHIN ±0.5" IN ALL AXES.
- FINISH--
 - GENERAL
 - WELDS SHALL BE SNAG AND SPATTER FREE.
 - ALL SHARP CORNERS SHALL BE GROUND DULL.
 - EXTERIOR
 - SURFACES SHALL BE MILL FINISH OR BETTER.
 - WELDED JOINTS (STAINLESS): REMOVE DISCOLORATION & SLAG, STRIP POLISH, AND PASSIVATE.
 - WELDED JOINTS (C. STL.): REMOVE DISCOLORATION & SLAG, FINISH PER C. STL. PAINTING SPECIFICATION.
 - INTERIOR (STAINLESS)
 - SURFACES SHALL BE MILL FINISH OR BETTER.
- WORKING CAPACITIES:
 - SUMP: 95 GAL. (MAX.)

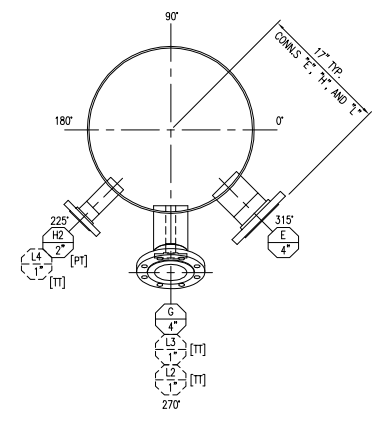
REVISIONS			
ZONE	REV	DESCRIPTION	APVD DATE
	1	ISSUED FOR BID PURPOSES ONLY.	RM 04-16-15
	2	GENERAL UPDATE REVISIONS; APPROVED FOR FABRICATION.	RM 04-21-15

DESIGNED BY	DATE	BY	DATE
RM	04-16-15	RM	04-09-15
APVD			
RM			

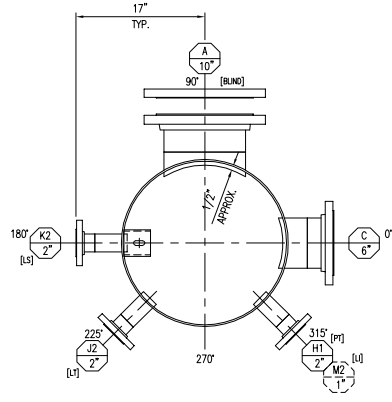
TOLERANCES: DECIMALS: .100, .050, .020, .010 UNLESS SPECIFIED

THIS DRAWING IS THE PROPERTY OF B&W MEGTEC. IT SHALL NOT BE REPRODUCED OR TRANSMITTED IN ANY FORM OR BY ANY MEANS, ELECTRONIC OR MECHANICAL, WITHOUT THE WRITTEN CONSENT OF B&W MEGTEC.

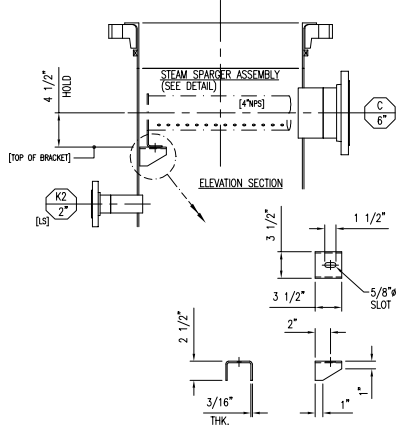
CUSTOMER: AMS/PROSA - RACELAND, LA
 FILENAME: SR1402-0202141_Rev-A_Shipper Column (SR1402)0202141
B&W MEGTEC
 TITLE: ARRANGEMENT AND DETAILS HEXANOL RECOVERY STRIPPER COLUMN CI-2452
 DRAWING NUMBER: SR1402_VIR_020/01
 REV: A
 SCALE: 1:24 (DO NOT SCALE DRAWING) SHEET 1 OF 3 SIZE E



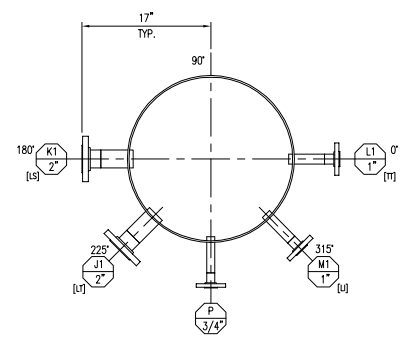
SECTION "E-E" (PLAN VIEW)
SCALE: 3/4"=1'-0"



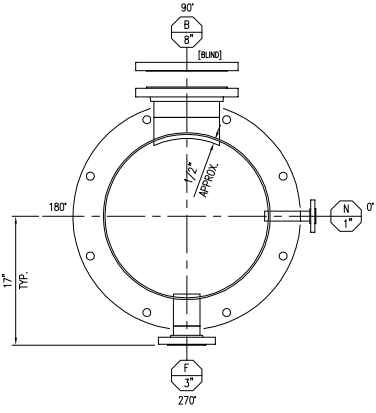
SECTION "F-F" (PLAN VIEW)
SCALE: 3/4"=1'-0"



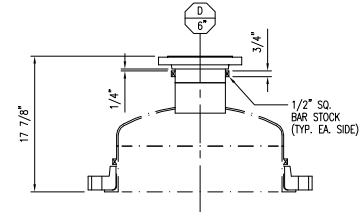
DETAILS- STEAM SPARGER SUPPORT BRACKET (1-REQD.)
SCALE: 3/4"=1'-0"



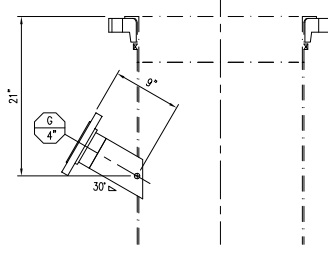
SECTION "G-G" (PLAN VIEW)
SCALE: 3/4"=1'-0"



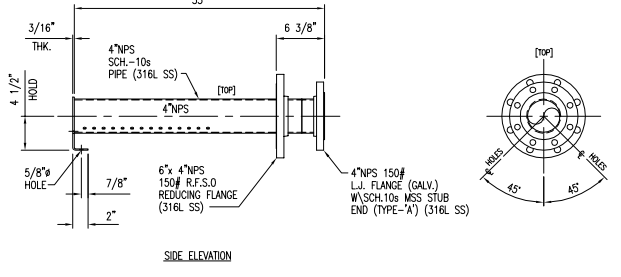
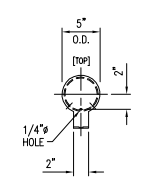
SECTION "H-H" (PLAN VIEW)
SCALE: 3/4"=1'-0"



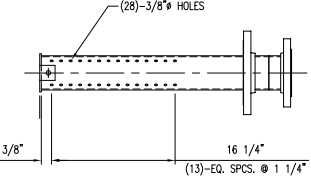
DETAILS- CONNECTION-"D"
SCALE: 3/4"=1'-0"



DETAILS- CONNECTION-"G"
SCALE: 3/4"=1'-0"

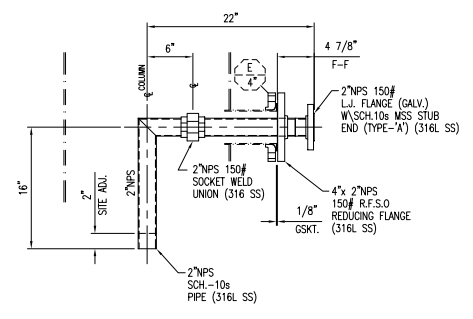


SIDE ELEVATION



BOTTOM VIEW

DETAILS- STEAM SPARGER ASSEMBLY
SCALE: 3/4"=1'-0"

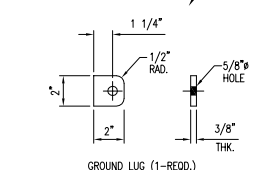
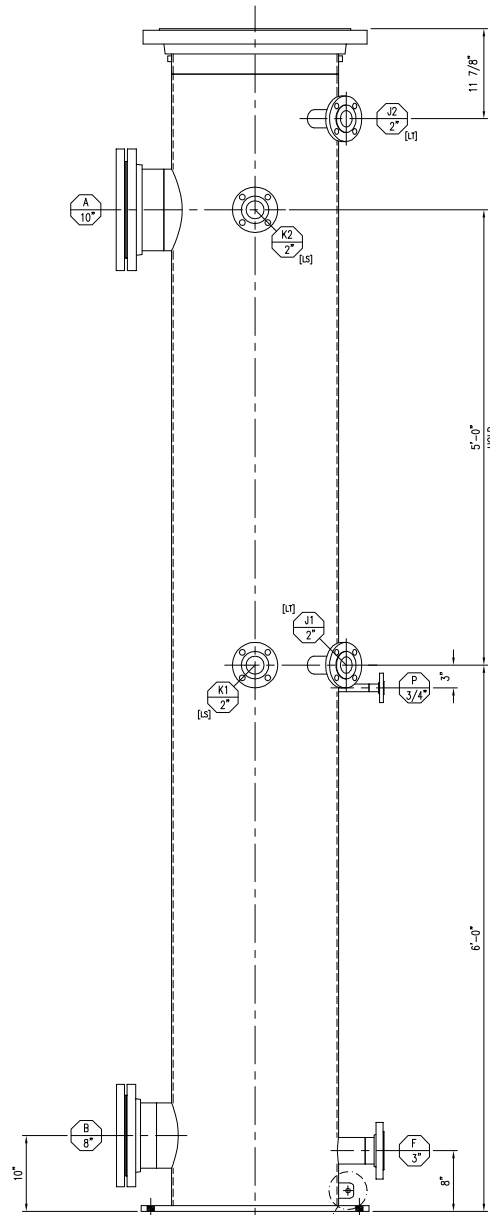


DETAILS- FEED PIPING ASSEMBLY (INTERNAL)
SCALE: 3/4"=1'-0"

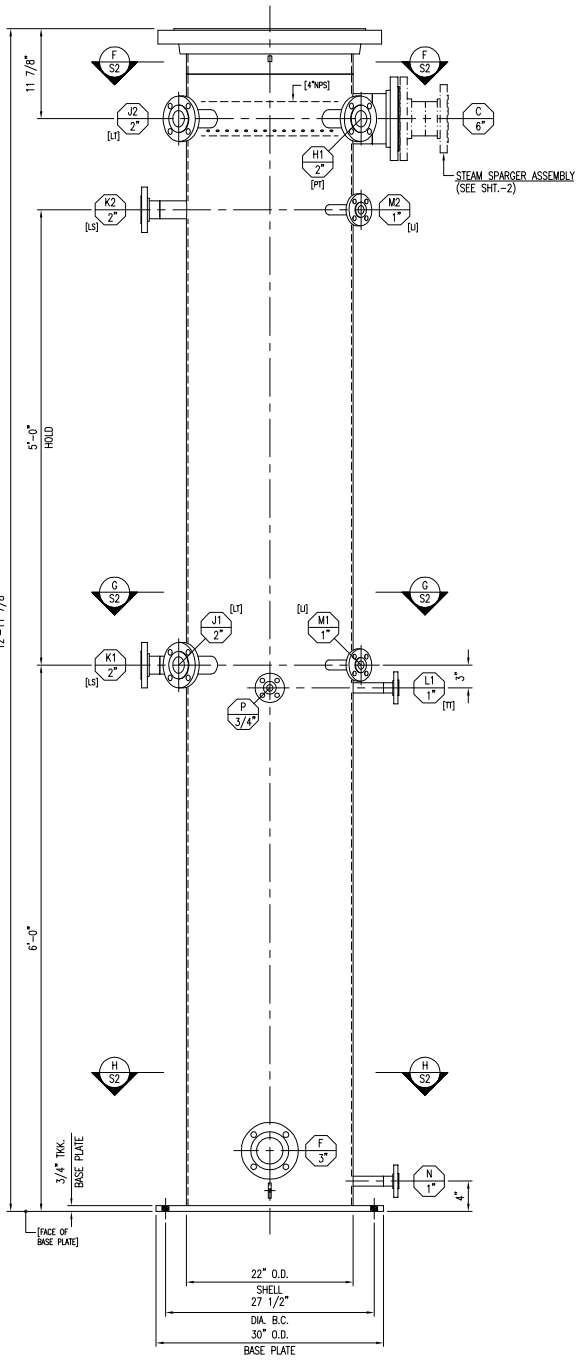
ZONE	REV	DESCRIPTION	AP/D	DATE
	1	ISSUED FOR BID PURPOSES ONLY.	RM	04-16-15
	2	GENERAL UPDATE REVISIONS; APPROVED FOR FABRICATION.	RM	04-21-15

TOLERANCES UNLESS SPECIFIED	BY	DATE
XX +.100	RM	04-09-15
XXX +.025		
XXX +.015		

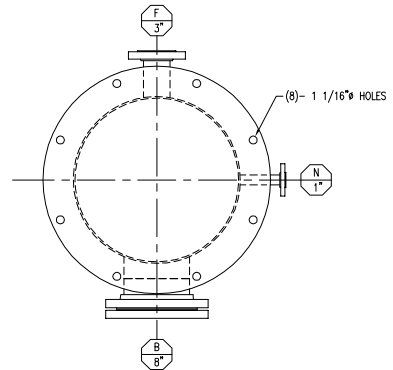
CUSTOMER: AMG/VRDA - RACELAND, LA
 FILENAME: SR1402-02001a2-3-Rev-A-Stripper Column 760-2452(2)97
B&W MEYTEC
 ARRANGEMENT AND DETAILS HEXANOL RECOVERY STRIPPER COLUMN CL-2452
 DRAWING NUMBER: SR1402_VIR_020/01
 REV: A
 SCALE: 1:8 DO NOT SCALE DRAWING SHEET 2 OF 3 SIZE: E



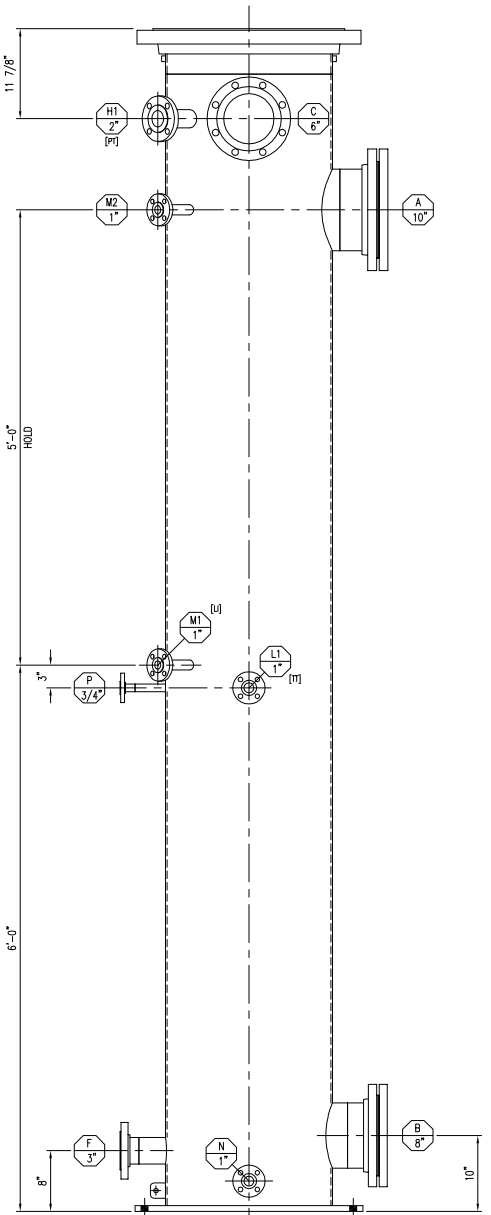
VIEW "C-C" (ELEVATION) (FROM SHT.-1)
SCALE: 3"=1'-0"



VIEW "B-B" (ELEVATION) (FROM SHT.-1)
SCALE: 3"=1'-0"



DETAILS - BASE SECTION
SCALE: 3"=1'-0"



VIEW "D-D" (ELEVATION) (FROM SHT.-1)
SCALE: 3"=1'-0"

ZONE	REV	DESCRIPTION	APVD	DATE
	1	ISSUED FOR BID PURPOSES ONLY.	RM	04-16-15
	2	GENERAL UPDATE REVISIONS; APPROVED FOR FABRICATION.	RM	04-21-15

TOLERANCES UNLESS SPECIFIED	BY	DATE
ISOMAL	DMN	RM
XX ±.100		04-09-15
XXX ±.050		
XXXX ±.025		
UNLESS SPECIFIED		

CUSTOMER: AMG/VRDA - RACELAND, LA
 FILENAME: SR1402-0201142-3-Rev-A-Stripper Column-2452.dwg
B&W MEGTEC
 TITLE: ARRANGEMENT AND DETAILS HEXANOL RECOVERY STRIPPER COLUMN CL-2452
 DRAWING NUMBER: SR1402_VIR_020/01
 REV: A
 SCALE: 1:8 (DO NOT SCALE DRAWING) SHEET 3 OF 3

PL
ST
IN
RE
CH
DE
DR
APP
CHK
DES
DWG
ENG
GRD
INT
ISS
MOD
PRO
REV
SEC
VAL
VEN
WEL
WRT