

2012-051/USE-305616

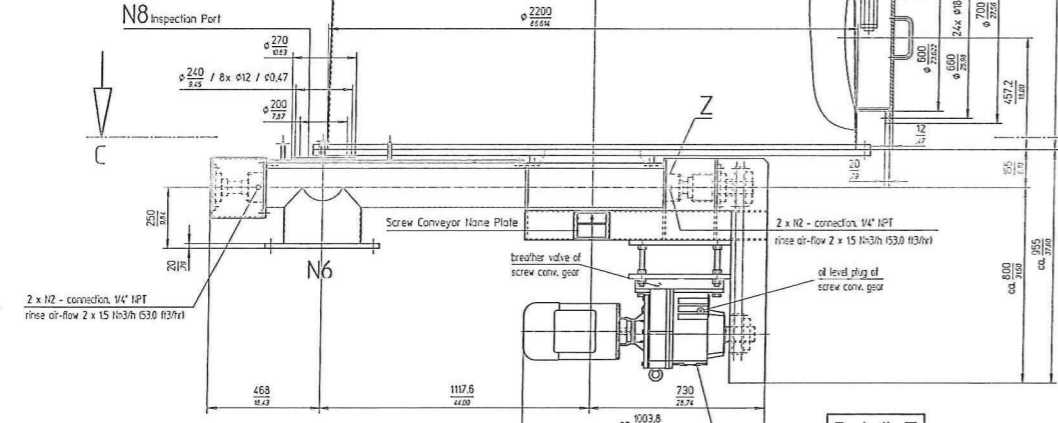
BASF CORPORATION VENDOR PRINT CONTROL STAMP

NO COMMENT
 COMMENTS NOTED
 NOT ACCEPTABLE
 PROCEED WITH FABRICATION
 SUBMIT APPROVAL DRAWINGS
 SUBMIT CERTIFIED DRAWINGS

BY: R.J. PIOTROWSKI
 DATE: 01/16/10

BASF SHALL ASSUME NO RESPONSIBILITY BY REASON OF ANY DRAWINGS, PLANS, OR SPECIFICATIONS AND VENDOR SHALL REMAIN SOLELY RESPONSIBLE FOR THE ACCURACY AND COMPLETENESS OF ALL DRAWINGS, PLANS, AND SPECIFICATIONS PREPARED OR FURNISHED BY VENDOR.

38970149-4591936421-0001 REV 4

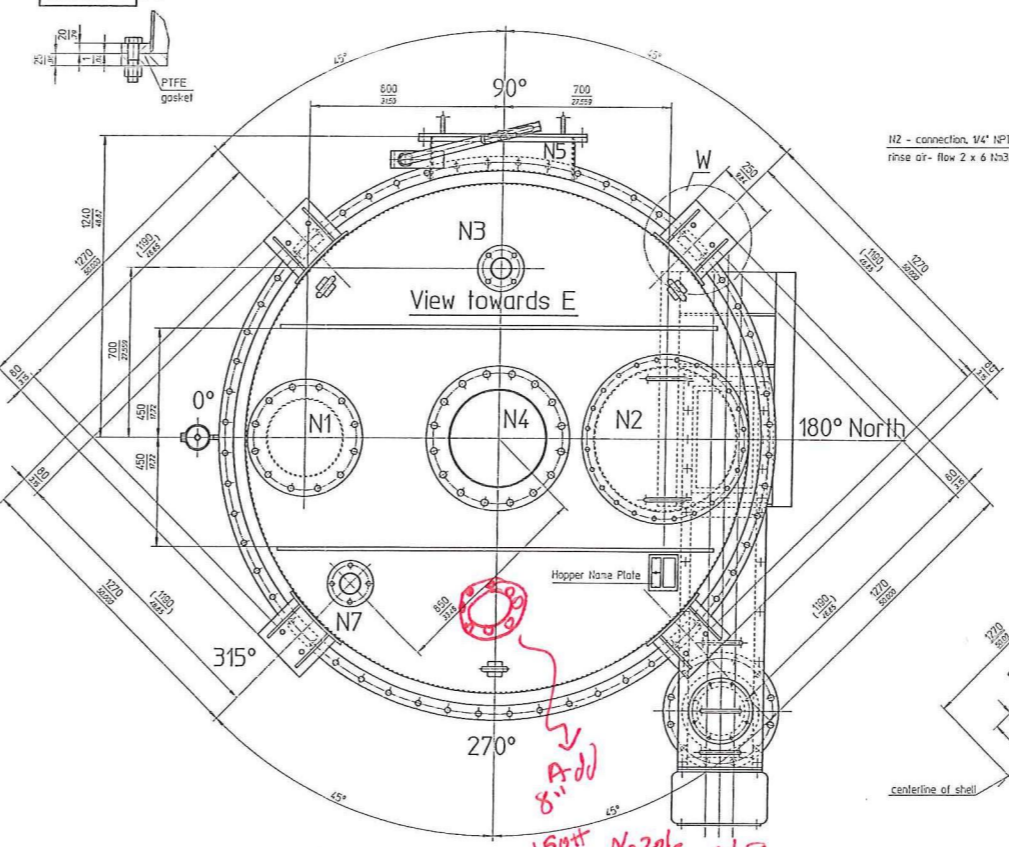
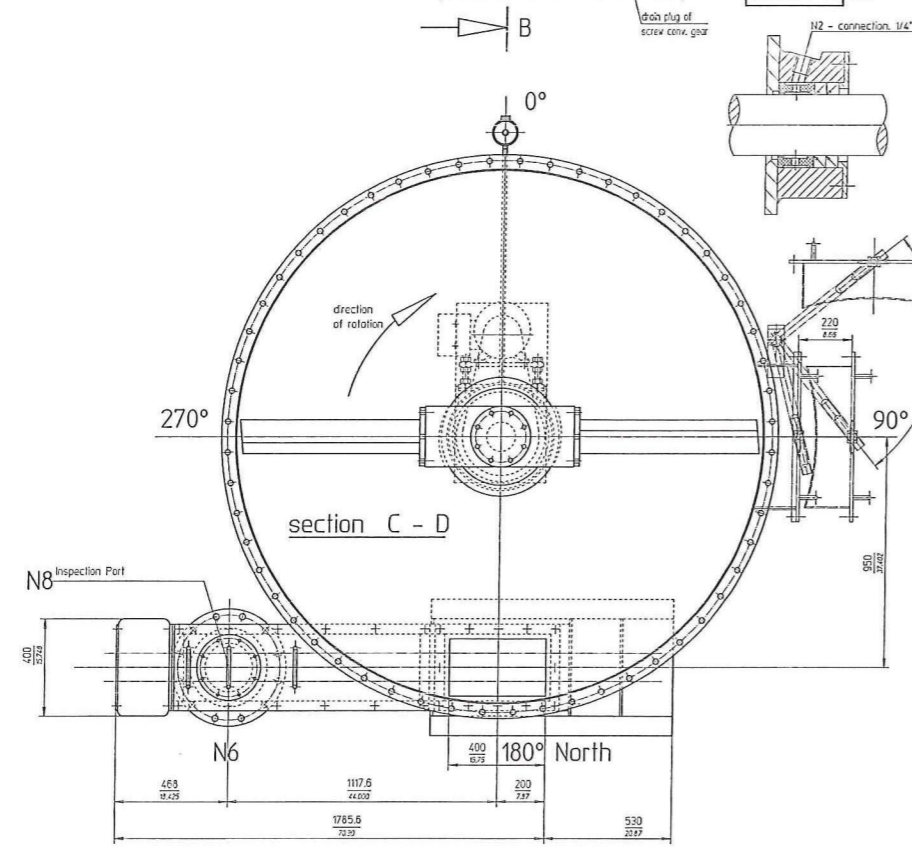


Detail Z H 12

Detail Y H 15

Detail X H 15

Detail W H 15



Hopper Name Plate

J. ENGELSMANN AG
 Co.-Nr. 37033
 Gev.-Nr. 3300 12, 3309
 Type AV-B 2200 14541 AM

MAMP +/- 0,05 bar
 +/- 20° WC
 Equipment No. G-890
 Design Rate Agitated Hopper
 max. Fill Weight 22700 lbs / 10300 kg
 Serial No. 37083-01
 Manuf. Date 2009

Screw Conveyor Name Plate

J. ENGELSMANN AG
 Co.-Nr. 37033
 Gev.-Nr. 459 13, 2009
 Type DDP 14541-02

MAMP +/- 0,05 bar
 +/- 20° WC
 Equipment No. G-891
 Design Rate Dbl. Screw Conveyor
 max. Fill Weight 1675 lbs / 760 kg
 Serial No. 37083-02
 Manuf. Date 2009

Agitated Hopper G-890

GETREBE / MOTOR (GEAR / MOTOR)
 FABRIKAT / MAKE : Brevini / Reliance

POWER : 50 HP, SPEED : ca. 11 rpm
 LEISTUNG : 37 kW, DREHZAH. : ca. 11 1/min
 DRIVING TORQUE : ca. 23.600 ft lbs
 ABTRESSDREHMOMENT : ca. 32.000 Nm

PROTECTION CLASS : Class II, Div. 2, Group C/D/G
 SCHUTZART : Class I Surface Temperatur Code T38, 325° F

VOLTAGE : 460 V FREQUENCY : 60 Hz
 SPANNUNG : 460 V FREQUENZ : 60 Hz

Double screw conveyor G-891

GETREBE / MOTOR (GEAR / MOTOR)
 FABRIKAT / MAKE : SEW / Reliance

POWER : 50 HP, SPEED : ca. 2 - 16 rpm
 LEISTUNG : 37 kW, DREHZAH. : ca. 2 - 16 1/min
 DRIVING TORQUE : max. 664 ft lbs
 ABTRESSDREHMOMENT : max. 900 Nm

PROTECTION CLASS : Class II, Div. 2, Group C/D/G
 SCHUTZART : Class I Surface Temperatur Code T38, 325° F

VOLTAGE : 460 V FREQUENCY : 60 Hz
 SPANNUNG : 460 V FREQUENZ : 60 Hz

Postenbunker complete with screw conveyor (empty): 3800 kg (8.379 lbs)
 filling with water 100% : 8000 kg (17.640 lbs)
 total : 11800 kg (26.019 lbs)

design temperature : -10°C/100°F
 design pressure : +/- 20° WC

FUNKTION Doppelförderschnecke
 Austragen / Dosieren

PRODUKTDATEN

Bezeichnung = 15% EPDC, EPDC
 Korngröße = 25-500 micron
 Feuchte = 7 - 32%
 Temperatur = 15-65°C
 Schüttdichte = 0,5-0,82 kg/dm³
 Fördermenge = max. 363 kg/h

Drehzahl = 16 Upm
 Füllungsgrad = 48
 Förderolumen = 0,824 l/U

FUNKTION Double Screw Conveyor
 discharging / metering

PRODUCT DATA

product = 15% EPDC, EPDC
 Particle size = 25-500 micron
 moisture = 7 - 32%
 temperature = 59-159°F
 bulk density = 31,54 Lb/Ft³
 capacity = max. 800 Lb/hr

speed = 16 rpm
 filling degree = 48
 conveying vol. = 0,824 l/U

NOZZLE TABLE

No.	DESIGNATION	NPS IN	LBS	STANDARD ASME	REMARKS
N 1	Spare w/ cover flange	12	150	B16.5	
N 2	Manhole w/ cover flange	24"	150	B16.5	24" manhole w/ 150 lbs ball hole drilling pattern & light weight flange w/ cover plate
N 3	Nitrogen Inlet	3	150	B16.5	
N 4	Inlet	16	150	B16.5	
N 5	Manhole w/ plug & cover flange	24"	150	B16.5	24" manhole w/ 150 lbs ball hole drilling pattern & light weight flange w/ plug cover plate w/ dawl assembly
N 6	Outlet	12	150	B16.5	
N 7	Vent	3	150	B16.5	
N 8	Inspection port w/ cover flange	8	150	B16.5	150 lbs ball hole drilling pattern & light weight flange w/ cover plate

N9 Powder Inlet
 8" Add
 150# Nozzle N9
 150# 8" Add
 150# Nozzle N9

J. ENGELSMANN AG

AV-B 2200 14541 AM Discharging device 02200 / 86614
 with double screw conveyor Dry Feeder / Screw Conveyor
 AV-B 14V 8k. Behälter G-890 / G-891

10001201 - 005 - 6050 - 0