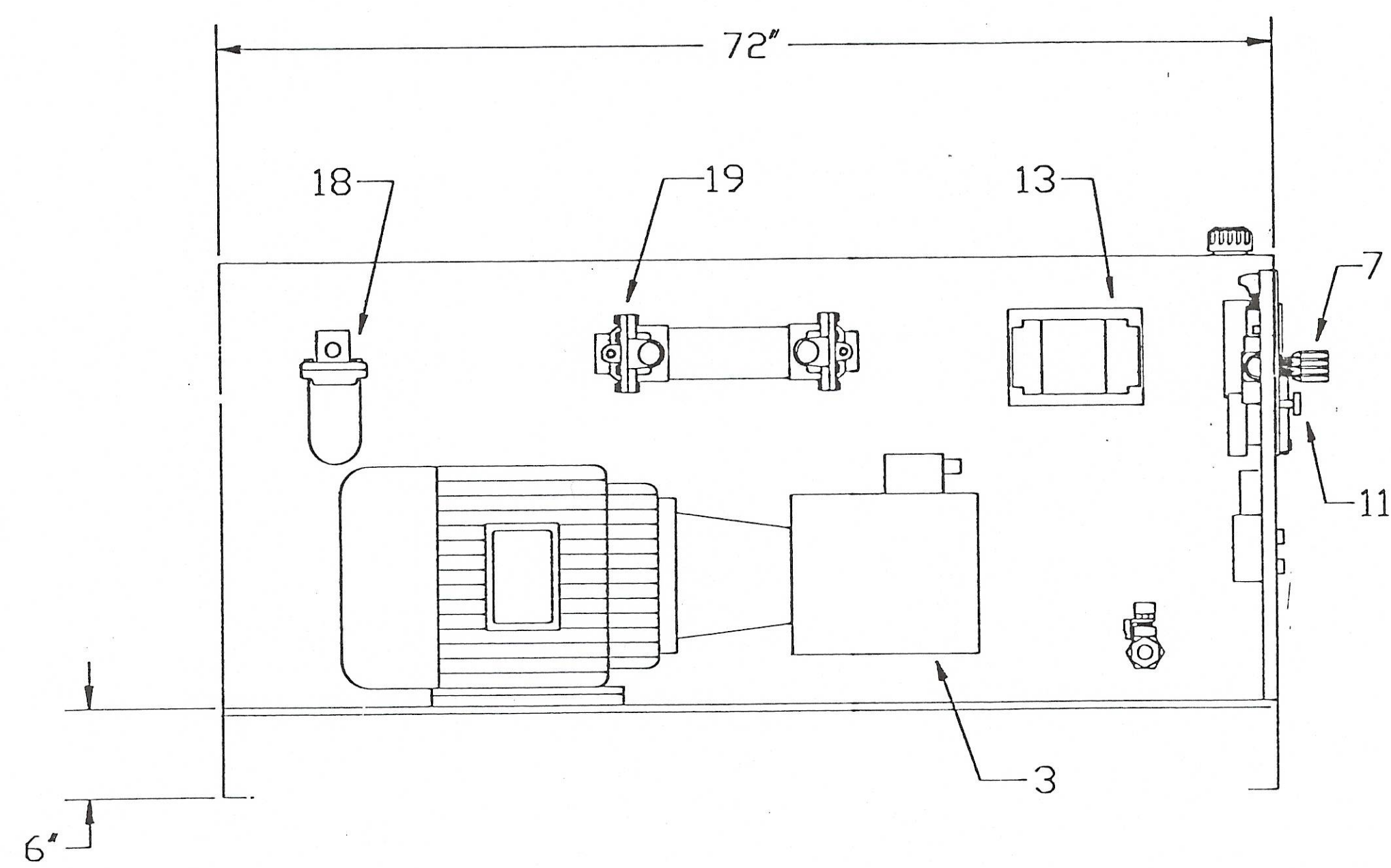


ITEM	QTY	DESCRIPTION
1	1	RESERVOIR - STL. 80 "L" SHAPE (80 GALLONS)
1A	1	FILLER BREATHER, HYCON FSA-127
1B	1	SIGHT GAGE, HYCON FSA-127
2	1	BALL VALVE, CONBRACO 75-108 w/locking
3	1	PUMP, REXROTH A10VSO71DFLR/3XRPKC62ND0
4	1	COUPLING, MAGNADY MDD. 400 - 1 1/4 X 5/16 - 1 7/8 X 1/2
5	1	C-FACE ADAPTER, BSF 1023-330-X-7.63
6	1	25 HP MOTOR, 460/3PH, 1.15 SF, EX. PROOF, GROUP C,D,F,G, CLASS 1, DIV. 1, HIGH EFF. RELIANCE
7	1	FLOW CONTROL VALVE, HYCON DV-26-1.0/12-P-S
9	1	MAIN RELIEF, REXROTH DBDH6G1XX/200/5
10	1	SAFETY RELIEF, REXROTH DB20G1-4X/315/12
11	1	GAGE ISOLATOR, DELTRDL G1-21S
12	1	GAGE, VIKI 2/3140 2-1/2" 1/4 CBM, 5000PSI
13	1	DIRECTIONAL VALVE, REXROTH 4WPH10H6X/ETS2
13A	1	SUBPLATE, REXROTH G536/12
14	1	MANIFOLD, VERSA EZM-31-121-2
15	2	DIRECTIONAL VALVE, VERSA ESM-3011-34-XX-Z-120VAC
16	1	MUFFLER, LIVINGSTON & HAVEN LHM-3
17	1	FILTER - REGULATOR, WATTS B548-02-AHCGS
18	1	RETURN FILTER, SCHRADER KF3-1K10-P-D5
19	1	WATER TO OIL COOLER, HAYDEN HW327-C6-2
20	1	SHUT OFF VALVE, JOHNSON CONTRDLS V47AC-6
21	1	CP1FF-8P-65A SNAPTITE CHECK



NOTE: ALL PLUMBING & ELECTRICAL TO POWER UNIT BY CLIENT

ROSENMUND INC. 6949 INTERSTATE STREET • P.O. BOX 648425  
CHARLOTTE, NC 28266-8425

SANDOZ  
1199/90-RF-147-3

Scale 1:9  
Drawn CEA 6-21-90  
Checked

REF: DWG. D3544 & C3540  
AUXILIARY HYD. UNIT & CABINET

**LIVINGSTON & HAVEN**  
CUSTOMIZED HYDRAULIC, PNEUMATIC & CONTROL SYSTEMS

TITLE  
25HP HYDRAULIC AGITATOR DRIVE

PROJECT NO. 22-07239/10966  
DRAWING NO. D3541

DATE 8-21-90

PORT CONNECTION SIZES  
A & B - 3/4 SAE  
CASE DRAIN - 8 SAE  
WATER - 3/4 NPT, AIR - 1/4 NPT

CUSTOMER ELECTRICAL CONNECTION  
1/2" CONDUIT - 2 SOLENOIDS

UNF-2A  
3/4-16  
TIE