

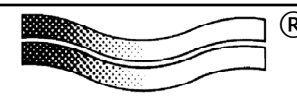
- REMARKS:**
- 304 stainless steel construction.
 - Countries of origin for pressure retaining components to be limited to Austria, Belgium, Canada, Denmark, Finland, France, Germany, Greece, Ireland, Israel, Italy, Japan, Luxembourg, Mexico, Netherlands, Norway, Portugal, South Africa, South Korea, Spain, Sweden, Switzerland, Taiwan, Turkey, United Kingdom and United States.
 - Design: 232 PSIG at 752°F with 0.000 corrosion allowance.
Design: Full vacuum at 350°F with 0.000 corrosion allowance.
 - MAWP (stamped): 273 PSIG at 752°F with 0.000 corrosion allowance.
MAWP (stamped): Full vacuum at 350°F with 0.000 corrosion allowance.
 - MDMT: -20°F at 273 PSIG.
 - Component limiting MAWP: Main shell, pipe.
 - Constructed per ASME Section VIII Division 1, 'U' stamped and National Board registered.
 - Bolt holes at flanges to straddle center lines.
 - Flow arrow to be weld bead per EN-11014.
 - PMI testing required on all pressure retaining components.
 - Radiography per ASME RT3 required.
 - Hydrostatically test at 460 PSIG, hold 2 hours minimum.
Test water max chloride content 25 ppm.
 - No other non-destructive testing required.
 - Interior surfaces: Clean per NAFCO specification EN-11006, Coat: none.
 - Exterior surfaces: Standard brush/wipe clean, Paint: none.
 - Vessel to be shipped with (2) spare closure gaskets, (10) spare closure studs and (20) spare closure nuts.
 - Flange openings to have wood or metal protective shipping covers.
 - Vessel to be shipped with (2) spare closure gaskets, (10) spare closure studs and (20) spare closure nuts.
 - Approximate weight: dry/operating 2210 lb., flooded 3575 lb.

Connection Detail				
Item	Qty	Function	Size/Type	Material
N1	1	Inlet	6"-300# RFLWN ASME B16.5 Flange	SA-182 Gr F304
N2	1	Outlet	6"-300# RFLWN ASME B16.5 Flange	SA-182 Gr F304
N3	2	Drain	1"-300# RFLWN ASME B16.5 Flange	SA-182 Gr F304
N4	1	Pressure tap	2"-300# RFLWN ASME B16.5 Flange	SA-182 Gr F304
N5	2	Pressure tap	2"-300# RFLWN ASME B16.5 Flange	SA-182 Gr F304

Component Detail					
Item	Qty	Name	Part Number	Description	Material
S1	18	Filter Cartridge	SMC3X44-10	Sintered metal filter body	Stainless Steel, 304
S2	1	Flange, ANSI B16.5		20"-300# RF Blind	SA-182 Gr F304
S3	1	Flange, ANSI B16.5		20"-300# RFWN	SA-182 Gr F304
S4	1	Gasket, Closure	GBSPF0435	With Graphite fill and carbon steel outer ring, For 20"-300# ANSI B16.5 flange	Stainless Steel, 304 Winding
S5	1	Ground Lug			SA-479 Gr 304
S6	1	Head, Weld Cap		20" Sch 20 (0.375 wall) ASME B16.9	SA-240 Gr 304
S7	4	Insulation Ring, Bottom			SA-240 Gr 304
S8	1	Insulation Ring, Top			SA-240 Gr 304
S9	4	Leg Assembly		Angle 3 X 3 X 1/4	SA-479 Gr 304
S10	2	Lift Lug			SA-479 Gr 304
S11	1	Nameplate		For ASME stamped vessels	Stainless Steel, 304
S12	1	Nameplate Bracket		Special 8" x 12"	Stainless Steel, 304
S13	48	Nut, Hex, Heavy		1 1/4-8 UN	SA194-2H, Fluorokote #1 coated
S14	1	Shell, Pipe		20" Sch 20 (0.375 wall)	SA-240 Gr 304
S15	24	Stud		1 1/4-8 UN Threaded full length	SA193-B7, Fluorokote #1 coated


Ventech item number:
F591 - High Temperature Hydrogen Air filter

LATEST REVISION			
REV	DESCRIPTION	DATE	APP
B	As built per NAFCO SO#64624	6/15/2015	reh

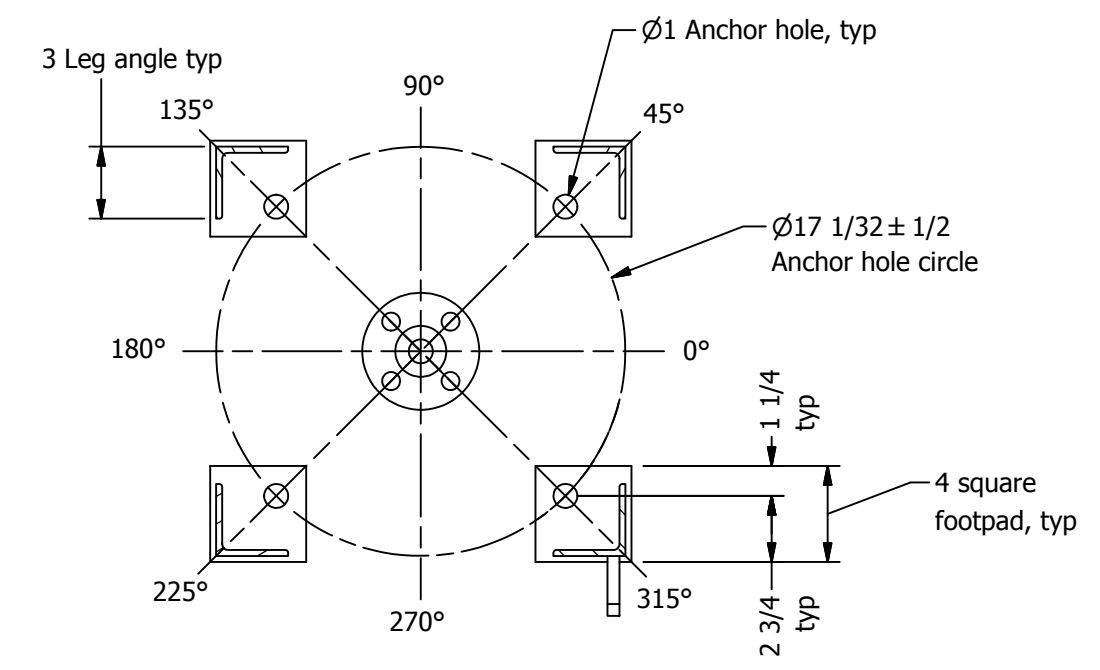
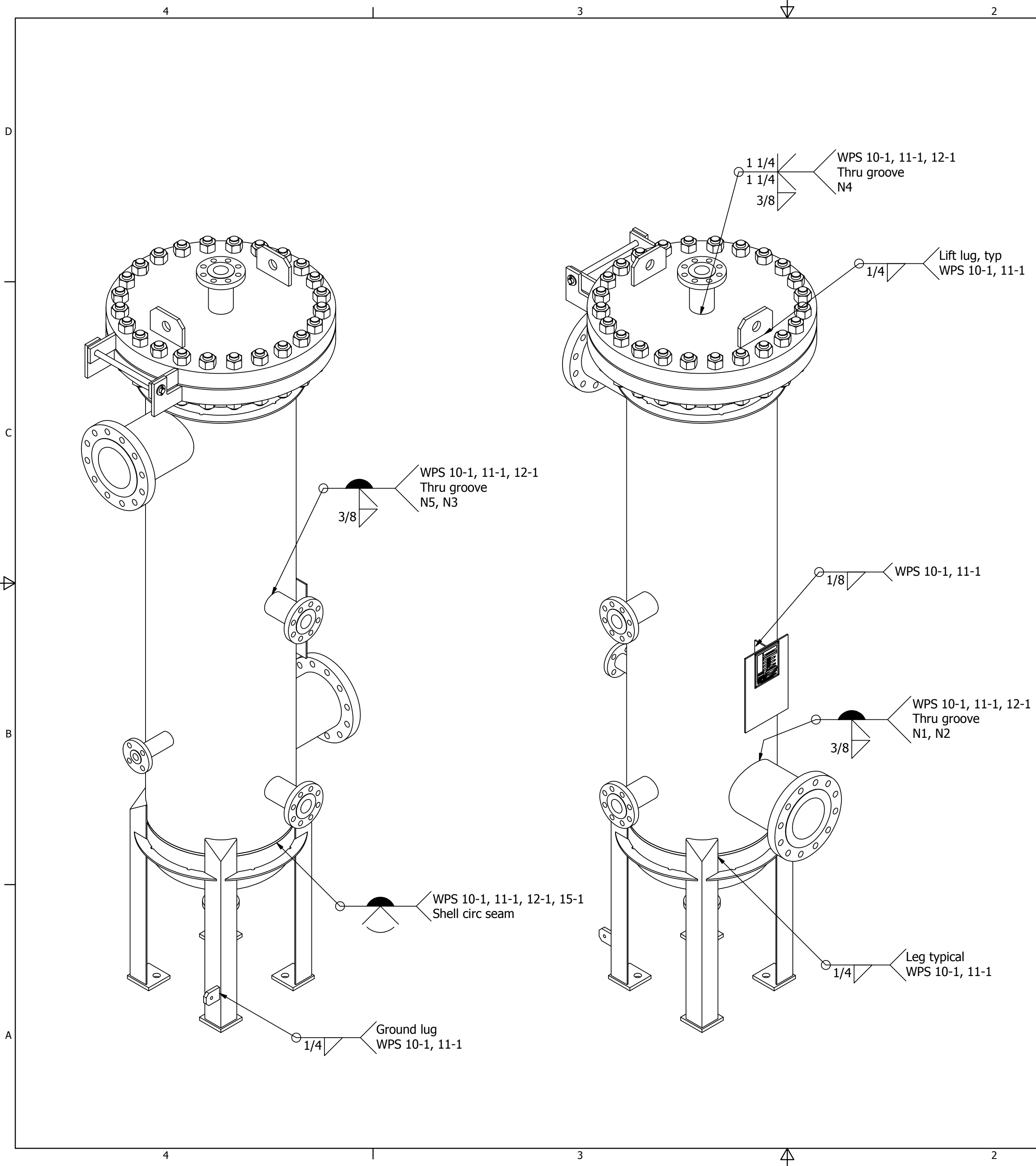
NAFCO 

UNLESS OTHERWISE NOTED
BREAK EDGES/REMOVE BURRS
UNITS: LINEAR INCHES; ANGULAR DEGREES
GENERAL TOLERANCES:±

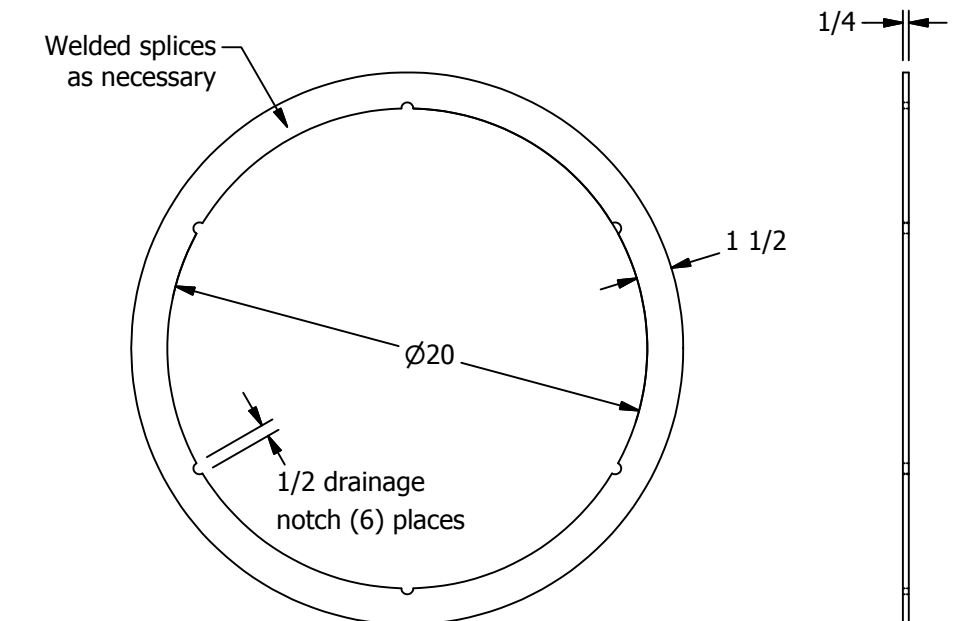
Property of North American Filter Corporation
200 Westshore Blvd., Newark, New York 14513
Telephone 800-265-8943 Fax 315-331-4750

DRAWING NUMBER		DRAWING TYPE		REVISION
13753		GA		B
SHEET SIZE	NUMBER	SCALE	THIRD ANGLE PROJ	STATUS
C	1 OF 2	NOTED		Released

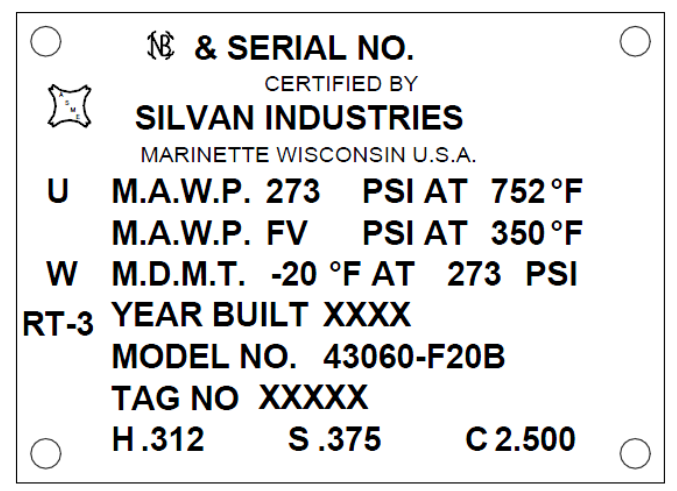
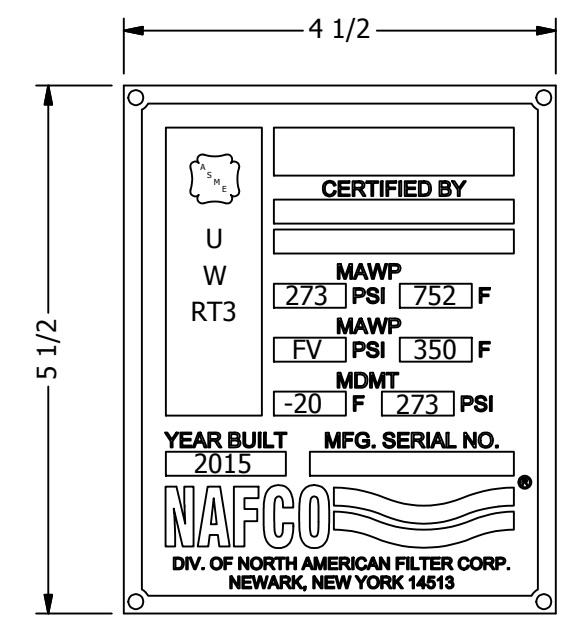
FRACTIONAL: 1/4 DECIMAL: ~
ANGULAR: 1 REFERENCE: (X)



FOOTPRINT DETAIL
SECTION B-B (FROM PAGE 1)
SCALE 1/8



INSULATION RING
SCALE 1/8



Ventech item number:
F591 - High Temperature Hydrogen Air filter

LATEST REVISION						
REV	DESCRIPTION	DATE	APP			
B	As built per NAFCO SO#64624	6/15/2015	reh			
		<small>Confidential document, Duplication prohibited Property of North American Filter Corporation 200 Westshore Blvd., Newark, New York 14513 Telephone 800-265-8943 Fax 315-331-4750</small>				
ORIGINAL ISSUE		Pressure Filter Model: 43060-F20B/SPL				
DRAWN: reh	12/24/2014	DRAWING NUMBER: 13753 DRAWING TYPE: GA REVISION: B				
CHECKED: TWH	12/29/2014					
APPROVED: reh	12/29/2014					
UNLESS OTHERWISE NOTED BREAK EDGES/REMOVE BURRS UNITS: LINEAR INCHES; ANGULAR DEGREES GENERAL TOLERANCES:±		SHEET SIZE: C	NUMBER: 2 OF 2	SCALE: NOTED	THIRD ANGLE PROJ:	STATUS: Released
FRACTIONAL: 1/4 DECIMAL: ~ ANGULAR: 1 REFERENCE: (X)						