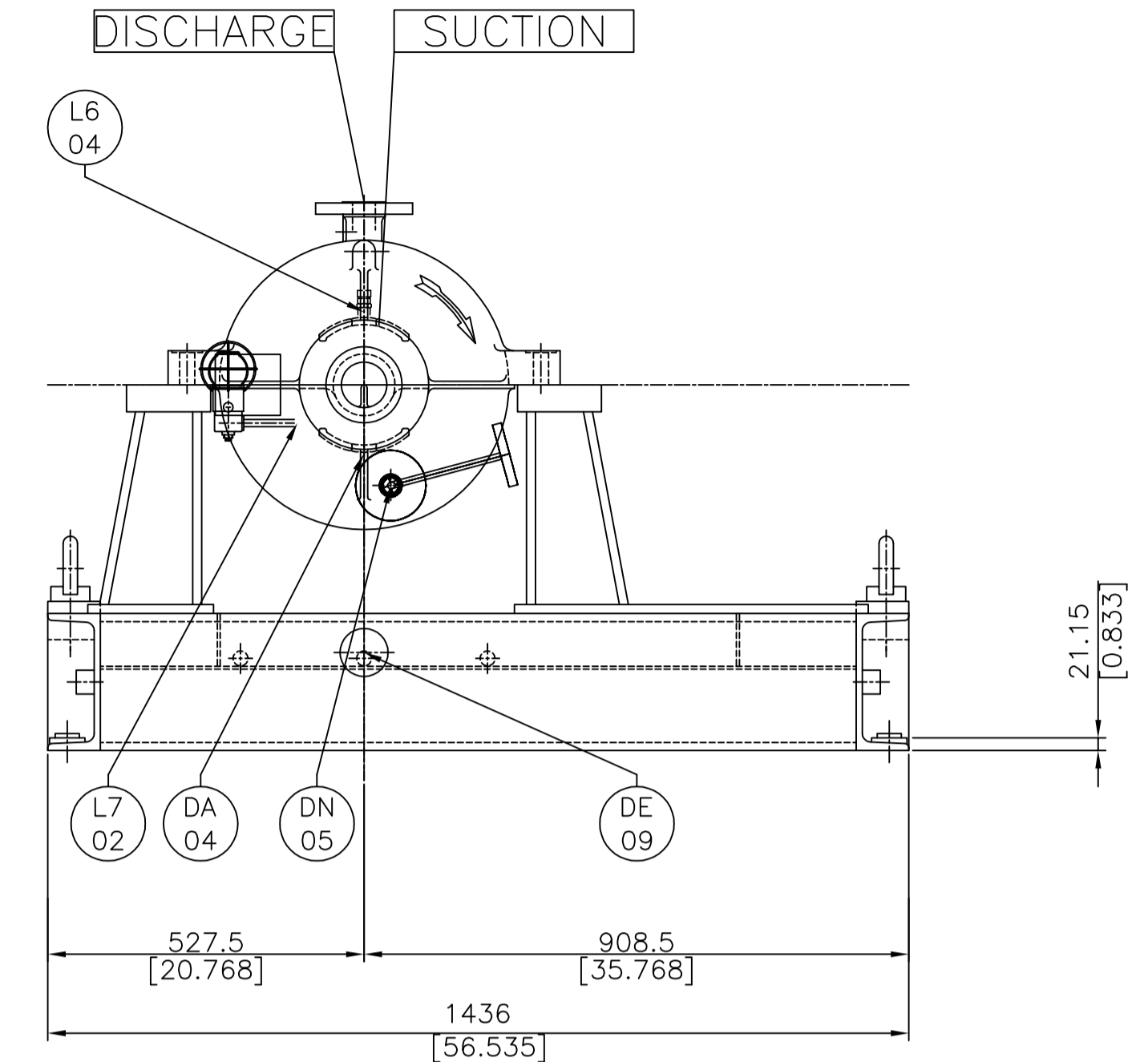
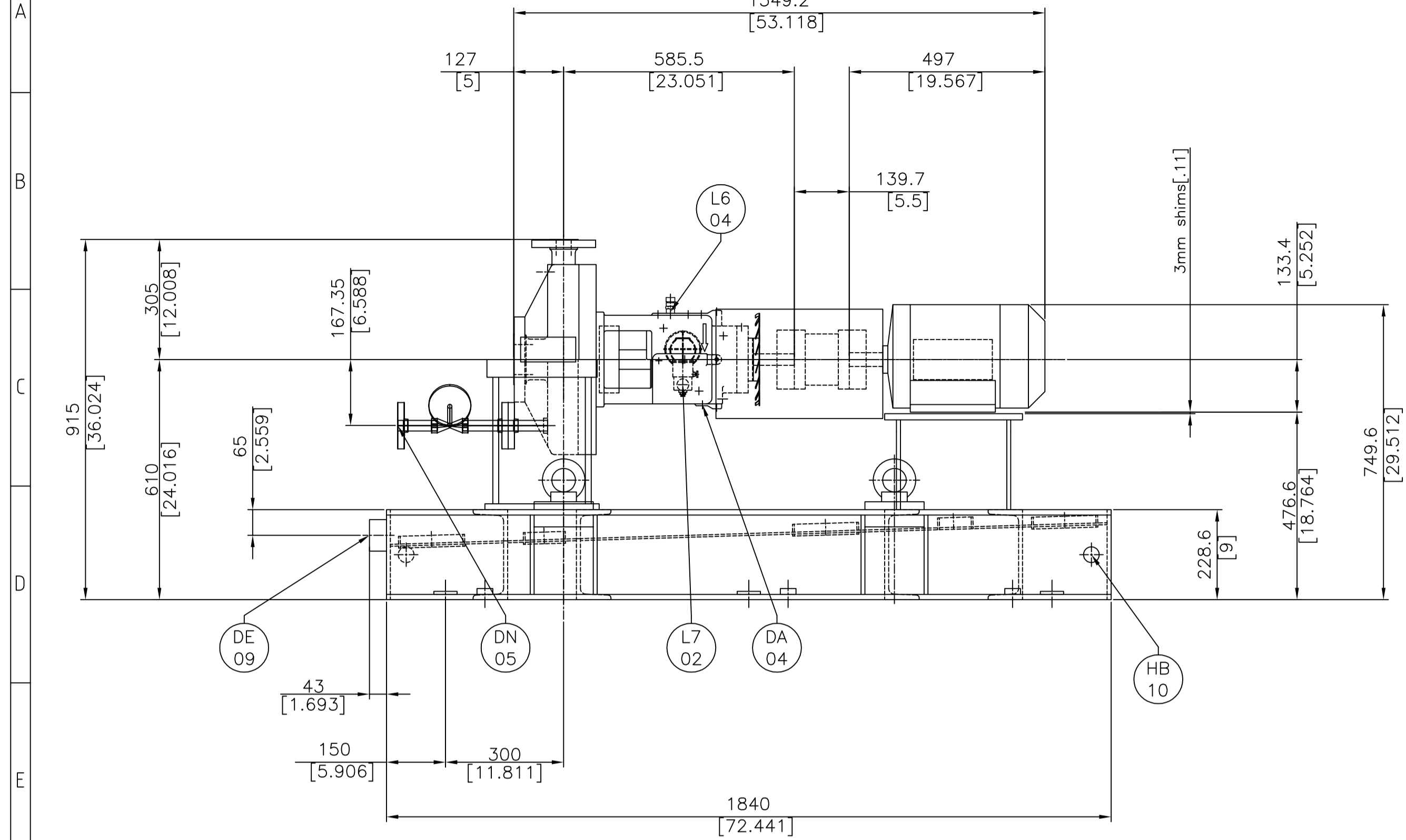


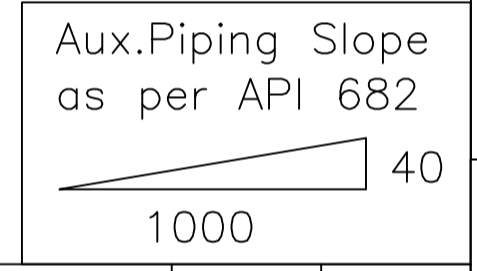
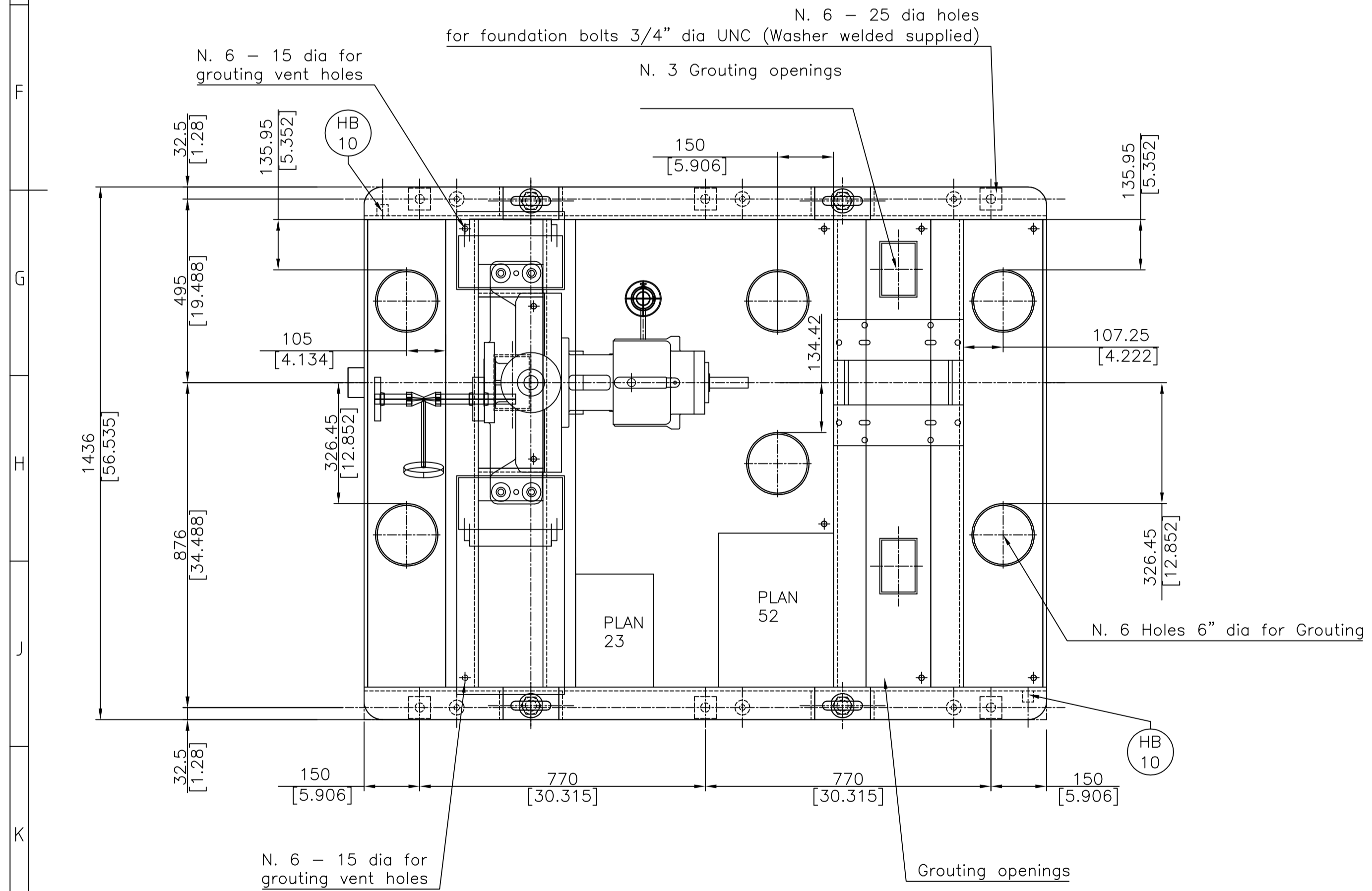
A01, A03, A04, A08, B03, A05

Rev.	Date	Description	Drw.	Chk'd	Appr.
0	19/01/2015	FIRST ISSUE	M.HERNANDEZ	F.BALCAZAR	E.PEREZ



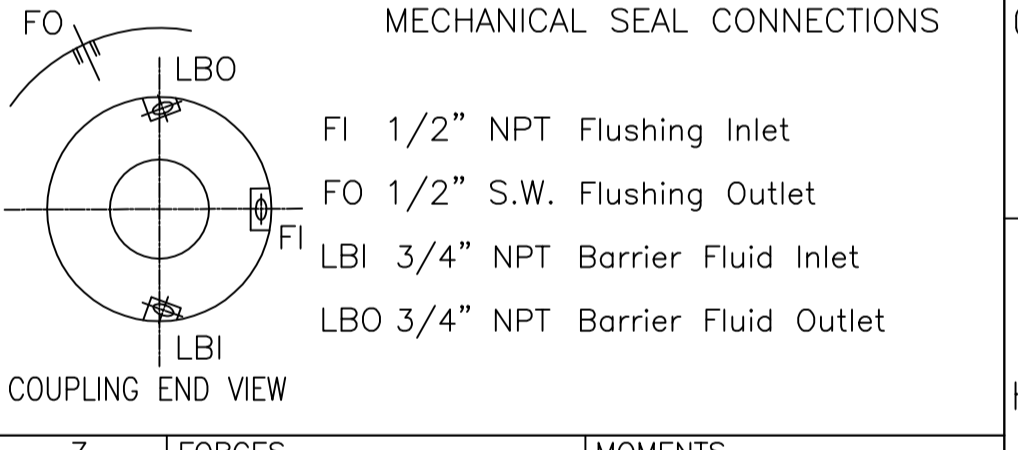
SELF VENTING PUMP
Applicable Tolerances according to ASME B16.5
ALL FLANGE HOLES STRADDLE CENTERLINE
ALL FLANGES WILL BE SMOOTH FINISH 125-250 AARH

	SUCTION		DISCHARGE	
	3" dia ASME 300 RF		1-1/2" dia ASME 300 RF	
	mm	Inch	mm	Inch
DB Nominal Bore Dia.	76.2	3	38.1	1.5
OD Outside Flange Dia.	210	8.25	155	6.12
BC Bolt Circle Dia.	168.3	6.62	114.3	4.5
NF Number of Holes	6	3	4	4
DF Holes Diameter	22.2	0.875	22.2	0.875
RF Raised Face Dia.	127	5	75	2.88
TK Raised Face Thick.	2	0.06	2	0.06
TF Flange Thick.	27	1.06	19.1	0.75



CENTERS OF GRAVITY		(mm)		(Inch.)	
DRIVER C.o.G.	X	510	20.079		
TOTAL C.o.G.	Y	-5	-0.1969		
PUMP C.o.G.	Z	640	25.197		
DRIVER C.o.G.	X	1438.5	56.634		
PUMP C.o.G.	Y	50	1.969		
TOTAL C.o.G.	Z	610	24.016		
	X	1018	40.079		
	Y	1	0.039		
	Z	408	16.063		

El. Motor :	BALDOR
Type :	AC
HZ:	60
HP:	10
PHASE:	3
V :	460
RPM :	1800
ENCL/FRAME :	215T
DWG :	TBD
Coupling :	THOMAS
Type :	SERIES 71
with non sparking guard Material : Aluminium	

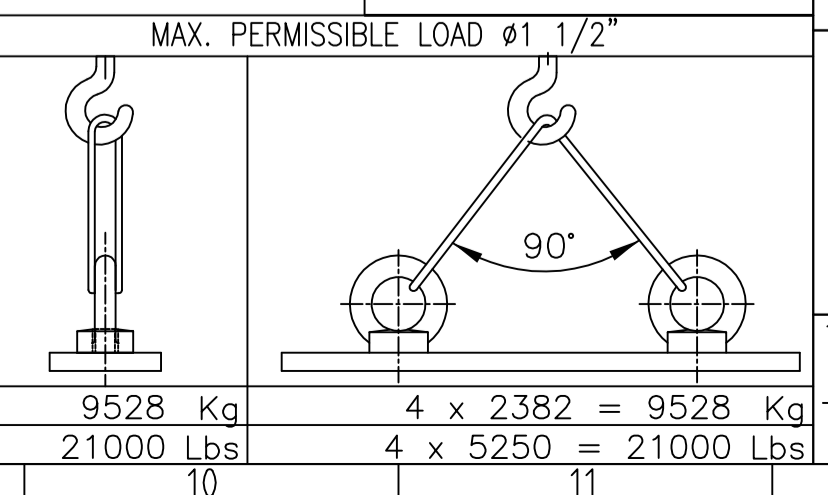
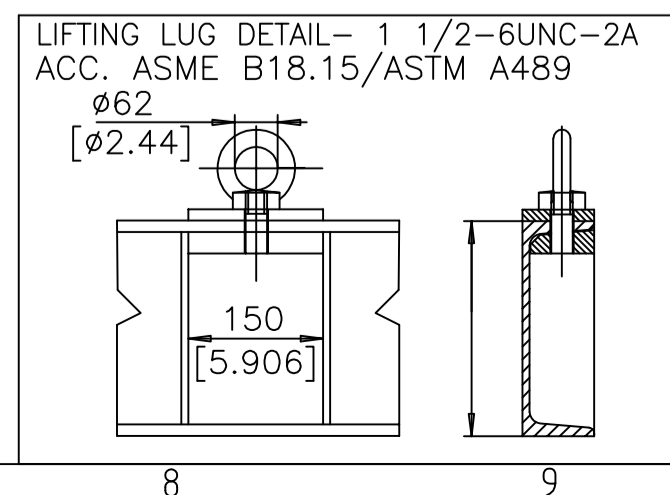


	FORCES N			MOMENTS Nm		
	Fx	Fy	Fz	Mr	My	Mz
DISCHARGE	710	580	890	1280	460	230
SUCTION	1330	1070	890	1930	950	470
	300	240	200	430	700	350

FOUNDATION DETAIL	
PUMP LEVEL SCREWS WELDED WASHER	
FINAL GROUT FIRST EMBEDDING FOR ANCHOR BOLTS PRIMARY CONCRETE	
EARTHING BOSS DETAIL	
CUSTOMER'S NOZZLES POSITION TOLERANCES	
ALL CUSTOMER CONNECTIONS LOCATIONS DIMENSIONS HAVE A TOLERANCE OF ±13 (5 inch) EXCEPT FOR THE PUMP SUCTION AND DISCHARGE NOZZLES WHICH HAVE A TOLERANCE OF ±6.4 (25 inch)	
BASEPLATE TOLERANCES ACCORDING TO API 610 Annex D	

FOUNDATION LOADS (approx. Masses)	
PUMP :	KG . 285 Lb . 628.3
BASE & COUPL. :	KG . 620 Lb . 1366.8
MOTOR :	KG . 105 Lb . 231
TOTAL :	KG . 1010 Lb . 2226.1
DYNAMIC LOADS ARE NEGLIGIBLE	
CROSS SECTION DWG: 50114IE0934 P&ID DWG: LATER	
MECHANICAL SEAL TBD	
TYPE : TBD DWG: LATER	
FLUSHING LINE API PLAN 23/52	
COOLING LINE N.A.	
P.O. NUMBER	526-00044
CUSTOMER	AGI INDUSTRIES
JOB	
PLANT	
UNIT	
SERVICE	LFTL FRACTIONATOR PUMP
ITEM	P-602
SERIAL N.	14IE0934
FLOW :	11.1 GPM
HEAD :	81.28 FT
NPSH :	1.4 FT
BHP :	2.1 HP
EFFICIENCY :	7.4 %
RPM :	1775
FLUID :	HYDROCARBON
TEMPERATURE :	500 °F
S.G. :	.683

POS	Q.	CONN. TYPE	DESCRIPTION
DA	1	1/2" NPT	Support Frame Oil Drain
DE	1	2" NPT	Baseplate Drain
DN	1	3/4" ASME 300 RF	Drain with Valve & Term. Flange
HB	2	M10	Earth. Bosses on opposite side
L6	1	1/2" NPT	Breath. & Oil Filling Hole
L7	1	1/4" NPT	Constant Level Oiler



ALWAYS PROVIDE PROTECTION GRIDS AROUND ALL ROTATING PARTS

STATUS OF APPROVAL FOR APPROVAL		DRAWING NO.	
ORDER NO. 14IE0934	DATE 19/01/2015	50014IE0934	
DRAWN BY M.HERNANDEZ	CHECKED BY F.BALCAZAR	REV. 0	
APPROVED BY E.PEREZ	DATE 19/01/2015	SCALE 1/10 UNITS metric SHEET NO. 1/1	
Extracted K190040900		DWG TITLE 1.5HPXM12A CENTRIFUGAL PUMP GENERAL ARRANGEMENT	
Substitutes		SIZE A1	
CAD File: A14IE0934k1		SHEET NO. 1/1	