

# FILTER SPECIFICATION SHEET

Date/ Author/ Revision

September 2, 2009 TMO

Rev. 0

#109677

Tag	F810-01
PID number/ name	P220
Name	<b>CIP Filter</b>
Application	Removal of solid contaminants from Clean-In-Place solution
Vendor	By Vendor
Vendor model designation	By Vendor

## OPERATING CONDITIONS

Fluid:	Clean-In-Place Solution. Solution composition can be either: 1 to 3 wt% sodium hydroxide in water or 1 to 3 wt% acid (citric, phosphoric, or nitric) in water
Suspended Solids, %	A small amount (estimated < 2%) of biological solids may be present due to recirculation of CIP solution following equipment cleaning.

	Min	Normal	Max	Comments
Operating Temperature, °C	25	60	60	
Operating Pressure (inlet), barg	4.66	4.66	4.87	
Viscosity, cP	0.54	0.51	0.51	
Density, g/cm³	1.019	1.007	1.007	
Liquid Flow, m³/hr		6.8	6.8	
Liquid Flow, gpm		30.0	30.0	

## DESIGN REQUIREMENTS

		Comments
Design Flow Rate, m³/hr	6.8	
Max Clean Pressure Drop, bar	0.34	Clean - cartridge plus housing
Max Dirty Pressure Drop, bar	1.00	
Design Pressure, barg	10.0	
Design Vacuum	FV	full vacuum
Design Temperature, deg C	100	
Corrosion Allowance, mm	0.0	
Cartridge absolute rating, microns	250	
Design Code	ASME	National Board stamp required
Head Closure	By Vendor	

## Remarks

- Unit shall be designed per ASME Code and Tennessee Boiler and Unfired Pressure Vessel Rules & Regulations. National Board Stamp is required
- Vendor shall provide element model and quantity as part of quotation.
- Vendor shall provide estimated clean pressure drop as part of quotation.

## NOZZLE SCHEDULE

Description	Size	Connection	Comments
Inlet	By Vendor	150# RF Flange	
Outlet	By Vendor	150# RF Flange	
Drain	By Vendor	150# RF Flange	
Vent	By Vendor	150# RF Flange	

## MATERIALS OF CONSTRUCTION

		Comments
Housing	AISI 304 or 304L SS	
Support / Legs	AISI 304 or 304L SS	
Bolts	AISI 304 or 304L SS	
Splash Guard	AISI 304 or 304L SS	Around head to direct leak to floor
Gaskets	EPDM	Vendor to Confirm
Filter Element	Polypropylene	Vendor to Confirm

## INSULATION

Function	Energy conservation	
Insulation thickness	50.8 mm	2.0 inch
Insulation material specification including the cover	mineral wool / 0.020" aluminum cover with SS bands	

## DOCUMENTATION

- The following files are part of this Equipment Data Sheet and are to be included as attachments:  
**Vendor Doc Requirements**

109677

NB	
CERTIFIED BY	
UMA STRAINRITE INC.	AUBURN, ME
MAWP 150 PSI	at 200 F
MAEWP 150 PSI	at 150 F
MDMT -20 F	at 150 PSI
YEAR BUILT 2009	S/N
W MODEL NO. 352607	
	SRC-10-6-2F-B

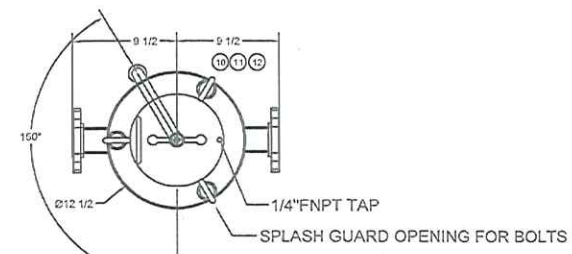
RESOLVED BY (15/01/09/09)

REVISIONS			
LTR	DESCRIPTION	DATE	APPROVAL
0	NEW	11-11-09	DCB

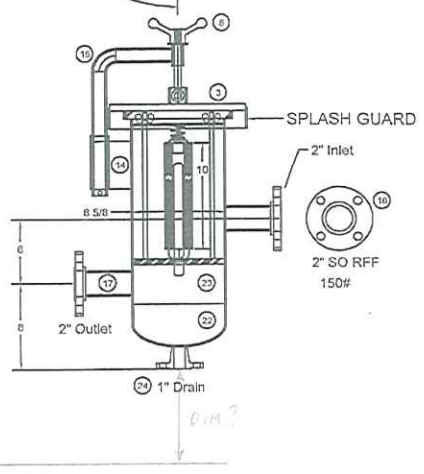
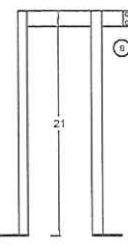
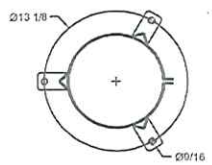
NOTES:  
ASME "UM" STAMPED NB REGISTERED  
150PSI @ 200F  
BEAD BLAST FINISH



SECTION A - A



INCLUDE CARTRIDGE INFORMATION  
(1) POWER PULSED 100 PSI MAXIMUM PRESSURE  
DMP1000-20 AC-20



\* REPLACEMENT PARTS AVAILABLE

ITEM	DESCRIPTION	QTY	PART	MAT'L	MAT'L GRADE	CODE
26						
24	FLANGE DRAIN	1	1" RFWN 150# ASME D16.6	304	SA182	
23	SHELL	1		304	SA312	
22	HEAD	1		304	SA40S	
21	TOP RING	1		304	SA240	
20	DISPLACER					
19	SEEP PLATE	1		304	SA240	
18	FLANGE 1/0	2	2" RFSO 150# ASME D16.6	304	SA182	
17	PIPE 2"	2	SCHD 40	304	SA312	
16*	COVER ORING	1			RPM	
15	DAVIT	1		304		
14	DAVIT WP	1		304	SA240	
13	SB BRACKET	3		304	SA240	
12*	PIN	3		CS	SA185 B7	
11*	KYE NUT	3	5/8"-11	CS	SA184 2H	
10*	SWINGBOLT	3	5/8"-11 X 5" LNC	CS	SA185 B7	
9*	STAND ASSY	1		SS		
8	T KNOB	1		ALU		
7	SPRING CAP	6		304		
6	SEAT CUP	6		304		
5	YPOST 10"	6		304		
4	COUPLING VENT					
3	COVER	1		304	SA240	
2	NAME PLATE	1		SS		
1	NAME PLATE WP	1		304	SA312	

Prod Order: 200804 Control  
Customer: YACO-NORRIS/UMW  
Destination: -  
Cust P.O.#: 246966  
Cust Tag#: F210 & F210-D1

Ship Date: -  
M.A.W.P. 150 psig at 200 F  
M.D.M.T. -20 F at 150 psig  
Hydrostatic test at 1.5x psig  
ASME Sec. VIII Div. 1 2007 2008 Add.  
Code Stamp: UM, N.B.# 210  
Mfg. Serial# 210

Approv. \_\_\_\_\_  
Weight Empty 25 Lbs. Full 30 Lbs.

Submittal Drawing  
This Drawing is for your Approval please sign, Date, and return to Continue Manufacture.  
APPROVED AS IS \_\_\_\_\_  
APPROVED WITH REVISIONS \_\_\_\_\_  
NOT APPROVED REVISIONS \_\_\_\_\_  
Signed: *[Signature]*  
Revisions or Changes may effect Delivery Dates & Price  
Estimated Manufacture time is 2 weeks  
After Drawing Approval.

REV	DATE	BY	APP	DESCRIPTION
1				
2				
3				
4				
5				
6				
7				
8				
9				
10				
11				
12				
13				
14				
15				
16				
17				
18				
19				
20				
21				
22				
23				
24				
25				
26				
27				
28				
29				
30				
31				
32				
33				
34				
35				
36				
37				
38				
39				
40				
41				
42				
43				
44				
45				
46				
47				
48				
49				
50				

THIS REPRODUCTION IS A PROPRIETARY DESIGN AND CONFIDENTIAL INFORMATION OF UP STRAINRITE INC. AND IS LOANED SUBJECT TO THE CONDITIONS THAT: (1) IT SHALL BE USED OR CAUSED TO BE USED FOR RECORD AND REFERENCE PURPOSES; (2) IT SHALL NOT BE USED OR CAUSED TO BE USED FOR PROCUREMENT IN ANY WAY PREJUDICIAL TO UP STRAINRITE INC. INTERESTS; (3) IT SHALL NOT BE REPRODUCED OR COPIED IN WHOLE OR IN PART; AND (4) IT SHALL NOT BE DISCLOSED AS GENERAL OR SPECIFIC INFORMATION WITHOUT EXPRESSED CONSENT IN WRITING SIGNED BY AN AUTHORIZED REPRESENTATIVE OF UP STRAINRITE INC.

UNLESS OTHERWISE SPECIFIED DIMENSIONS ARE IN INCHES. TOLERANCES ARE AS FOLLOWS: FRACTIONS ± 1/32 DECIMALS ± .010 HOLE ± .010 HOLE ± .010	<p>SRC-10-6-2F-A-S&amp;P-UM-EPDM</p> <p>REV: 11-11-09</p> <p>DATE: 11-11-09</p> <p>REV: DCB</p> <p>STRAINRITE INC</p> <p>65 First Flight Drive</p> <p>Auburn, Maine</p> <p>(207) 777-3100</p> <p>REV: 352607</p> <p>REV: DCB</p> <p>REV: DCB</p>
--	--