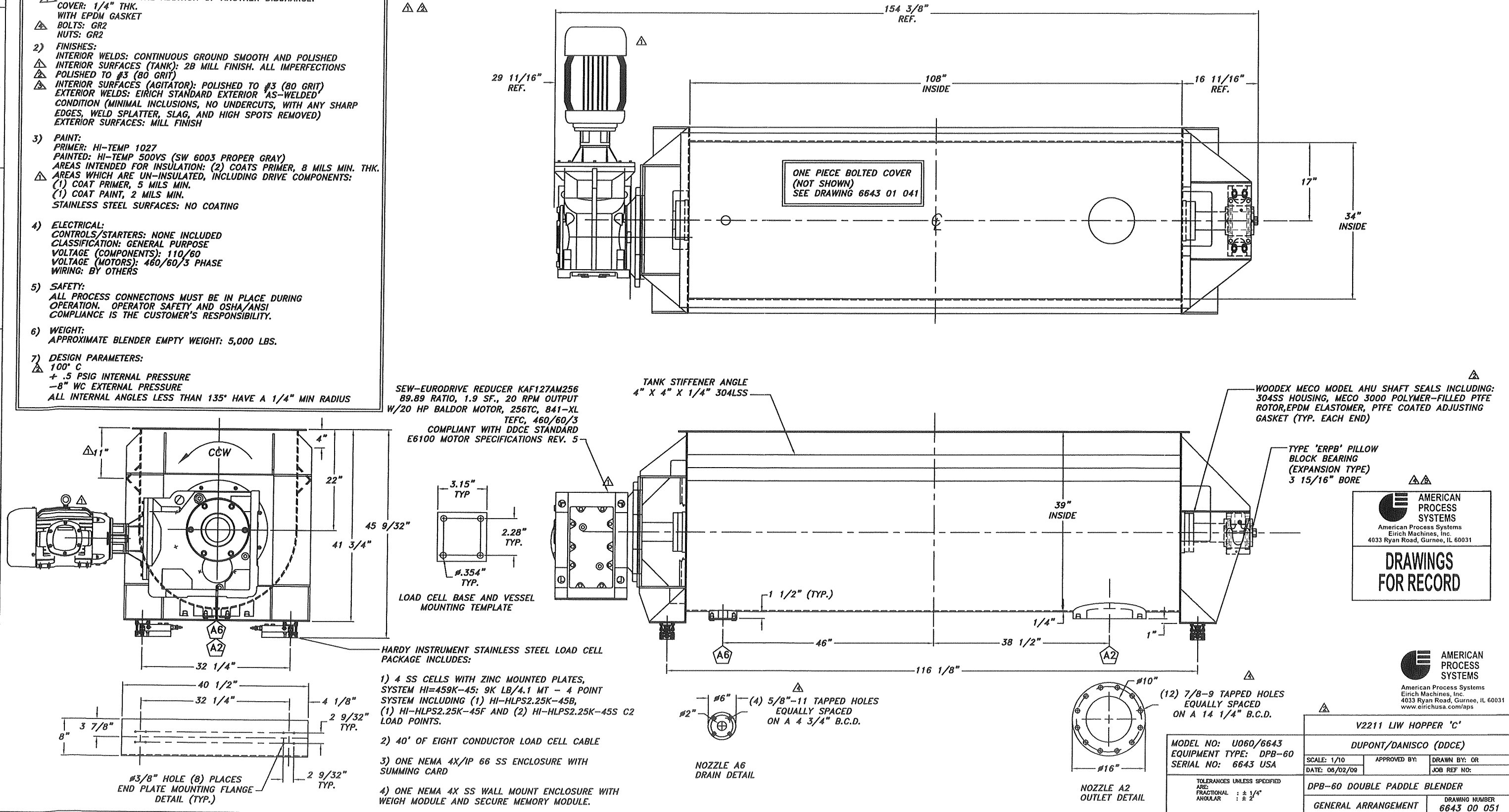


- NOTES:**
- CONSTRUCTION: 304L STAINLESS STEEL
ALL CONTACT SURFACES INCLUDE 1/16" CORROSION ALLOWANCE
TANK: 1/4" THK.
END PLATES: 1/4" THK.
BEARING PLATE & GUSSETS (N.D.E.): 1/4" THK.
BEARING PLATE & GUSSETS (D.E.): 3/8" THK.
REDUCER MOUNTING PLATE: 1/2" THK.
SHAFT: 4 1/4" #
PADDLES & POSTS: (12) 1/2" THK.
AGITATOR SPEED: 20 RPM
AGITATOR CLEARANCE: 1/8" NOMINAL (CCW ROTATION) Δ
NOTE: AGITATOR CAN BE RUN IN REVERSE FOR SHORT PERIODS OR WITH THE ADDITION OF ANOTHER DISCHARGE.
 Δ COVER: 1/4" THK.
WITH EPDM GASKET
 Δ BOLTS: GR2
NUTS: GR2
 - FINISHES:
 Δ INTERIOR WELDS: CONTINUOUS GROUND SMOOTH AND POLISHED
 Δ INTERIOR SURFACES (TANK): 2B MILL FINISH. ALL IMPERFECTIONS POLISHED TO #3 (80 GRIT)
 Δ INTERIOR SURFACES (AGITATOR): POLISHED TO #3 (80 GRIT)
 Δ EXTERIOR WELDS: EIRICH STANDARD EXTERIOR AS-WELDED CONDITION (MINIMAL INCLUSIONS, NO UNDERCUTS, WITH ANY SHARP EDGES, WELD SPLATTER, SLAG, AND HIGH SPOTS REMOVED)
EXTERIOR SURFACES: MILL FINISH
 - PAINT:
PRIMER: HI-TEMP 1027
PAINTED: HI-TEMP 500VS (SW 6003 PROPER GRAY)
AREAS INTENDED FOR INSULATION: (2) COATS PRIMER, 8 MILS MIN. THK.
 Δ AREAS WHICH ARE UN-INSULATED, INCLUDING DRIVE COMPONENTS:
(1) COAT PRIMER, 5 MILS MIN.
(1) COAT PAINT, 2 MILS MIN.
STAINLESS STEEL SURFACES: NO COATING
 - ELECTRICAL:
CONTROLS/STARTERS: NONE INCLUDED
CLASSIFICATION: GENERAL PURPOSE
VOLTAGE (COMPONENTS): 110/60
VOLTAGE (MOTORS): 460/60/3 PHASE
WIRING: BY OTHERS
 - SAFETY:
ALL PROCESS CONNECTIONS MUST BE IN PLACE DURING OPERATION. OPERATOR SAFETY AND OSHA/ANSI COMPLIANCE IS THE CUSTOMER'S RESPONSIBILITY.
 - WEIGHT:
APPROXIMATE BLENDER EMPTY WEIGHT: 5,000 LBS.
 - DESIGN PARAMETERS:
 Δ 100° C
+ .5 PSIG INTERNAL PRESSURE
-8" WC EXTERNAL PRESSURE
ALL INTERNAL ANGLES LESS THAN 135° HAVE A 1/4" MIN RADIUS

PLANT: DDCE
VONORE, TN
V2211
EQUIPMENT NO: DDCE11-0051
ORDER NO:
EQUIPMENT DESCRIPTION: LIW HOPPER
PADDLE MIXER 'C'
MTL OF CONST: 304L SS
PRESS/TEMP RATING: +.5 PSI / 100° C
-8" WC / 100° C
EMPTY WEIGHT: 5000 LBS
MFR: EIRICH MACHINES, INC
GURNEE, IL
DATE OF MFR: 08/2009

NOZZLE SCHEDULE					
TAG	QTY.	SIZE IN.	DESCRIPTION	FLANGE TYPE	LOCATION
A2	1	10"	PRODUCT OUTLET	STUD PAD, 150# ANSI PATTERN	TANK
A6	1	2"	DRAIN	STUD PAD W/A BLIND FLANGE, 150# ANSI PATTERN	TANK

NO.	DATE	BY	DESCRIPTION OF REVISION	CHD BY
Δ	8/8/09	CTI	UPDATED DRIVE ORIENTATION, ADDED EQUIPMENT TAG AND UPDATED NOZZLE SCHEDULE	
Δ	6/19/09	CTI	MOTOR SPEC. CHANGE FORM REV. 5 TO REV. 5 ADDED AGITATOR AND COVER NOTE. LISTED ONLY TANK NOZZLES ON THIS DWG. CHANGE PAINT, OTHER CHANGES PER ENGINEERING.	
Δ	6/25/09	CTI	UPDATED EQUIPMENT NUMBER, FINISH NOTES, FINAL SEAL DESIGN, AND EXTERNAL PRESSURE RATING	
Δ	6/29/09	JLA	UPDATED INTERIOR SURFACES NOTE	
Δ	8/28/09	OR	CHANGED FASTENERS GRADE FROM 5 TO 2 AND NOTE IN DISCHARGE AND DRAIN HOLES SPECS. APPROVED FOR CONSTRUCTION NOTE.	
			ADDED FOR RECORD NOTE	



SEW-EURODRIVE REDUCER KAF127AM256
89.89 RATIO, 1.9 SF., 20 RPM OUTPUT
W/20 HP BALDOR MOTOR, 256TC, 841-XL
TEFC, 460/60/3
COMPLIANT WITH DDCE STANDARD
E6100 MOTOR SPECIFICATIONS REV. 5

TANK STIFFENER ANGLE
4" X 4" X 1/4" 304LSS

WOODEX MECO MODEL AHU SHAFT SEALS INCLUDING:
304SS HOUSING, MECO 3000 POLYMER-FILLED PTFE
ROTOR, EPDM ELASTOMER, PTFE COATED ADJUSTING
GASKET (TYP. EACH END)

TYPE 'ERPB' PILLOW
BLOCK BEARING
(EXPANSION TYPE)
3 15/16" BORE

**AMERICAN
PROCESS
SYSTEMS**
American Process Systems
Eirich Machines, Inc.
4033 Ryan Road, Gurnee, IL 60031

**DRAWINGS
FOR RECORD**

**AMERICAN
PROCESS
SYSTEMS**
American Process Systems
Eirich Machines, Inc.
4033 Ryan Road, Gurnee, IL 60031
www.eirichusa.com/aps

HARDY INSTRUMENT STAINLESS STEEL LOAD CELL
PACKAGE INCLUDES:

- 4 SS CELLS WITH ZINC MOUNTED PLATES, SYSTEM HI=459K-45: 9K LB/4.1 MT - 4 POINT SYSTEM INCLUDING (1) HI-HLPS2.25K-45B, (1) HI-HLPS2.25K-45F AND (2) HI-HLPS2.25K-45S C2 LOAD POINTS.
- 40' OF EIGHT CONDUCTOR LOAD CELL CABLE
- ONE NEMA 4X/IP 66 SS ENCLOSURE WITH SUMMING CARD
- ONE NEMA 4X SS WALL MOUNT ENCLOSURE WITH WEIGH MODULE AND SECURE MEMORY MODULE.

Δ (4) 5/8"-11 TAPPED HOLES
EQUALLY SPACED
ON A 4 3/4" B.C.D.

NOZZLE A6
DRAIN DETAIL

Δ (12) 7/8"-9 TAPPED HOLES
EQUALLY SPACED
ON A 14 1/4" B.C.D.

NOZZLE A2
OUTLET DETAIL

MODEL NO: U060/6643
EQUIPMENT TYPE: DPB-60
SERIAL NO: 6643 USA

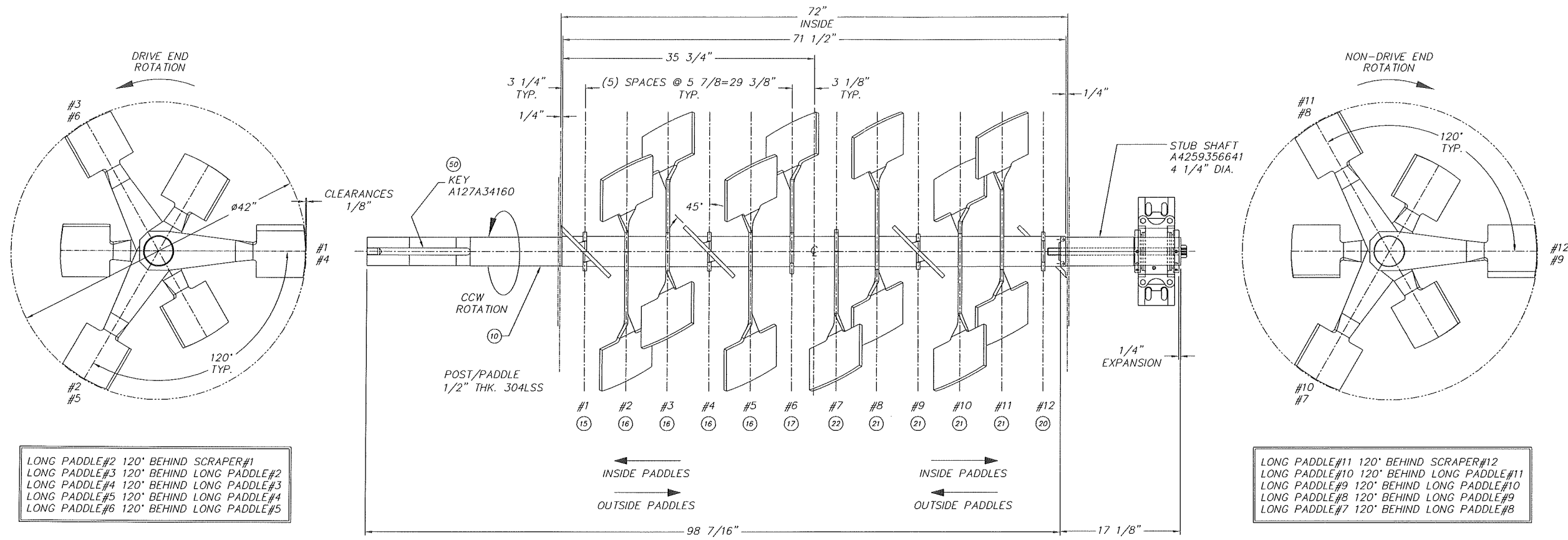
TOLERANCES UNLESS SPECIFIED
ARE:
FRACTIONAL : $\pm 1/4$ "
ANGULAR : ± 2 "

V2211 LIW HOPPER 'C'		
DUPONT/DANISCO (DDCE)		
SCALE: 1/10	APPROVED BY:	DRAWN BY: OR
DATE: 08/02/09		JOB REF NO:
DPB-60 DOUBLE PADDLE BLENDER		
GENERAL ARRANGEMENT	DRAWING NUMBER	6643 00 051

NO.	DATE	BY	DESCRIPTION OF REVISION	CHKD BY
Δ	07-01-09	JLA	ADDED FINISH NOTES	

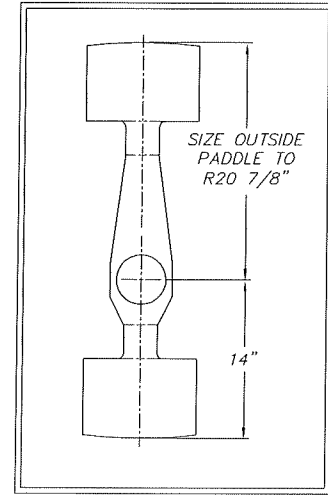
△ FINISH NOTES:
 WELDS: CONTINUOUS, GROUND SMOOTH & POLISHED
 SURFACES: POLISHED TO A #3 (80 GRIT)

ITEM NO.	DESCRIPTION
U050934664199	AGITATOR WELDMENT
10 U050934664110	AGITATOR
15 U050934664115	SCRAPER (DE)
16 U050934664116	PADDLES (DE)
17 U050934664117	CENTER PADDLE (DE)
20 U050934664120	SCRAPER (NDE)
21 U050934664121	PADDLES (NDE)
22 U050934664122	CENTER PADDLE (NDE)
50 A127A34160	KEY

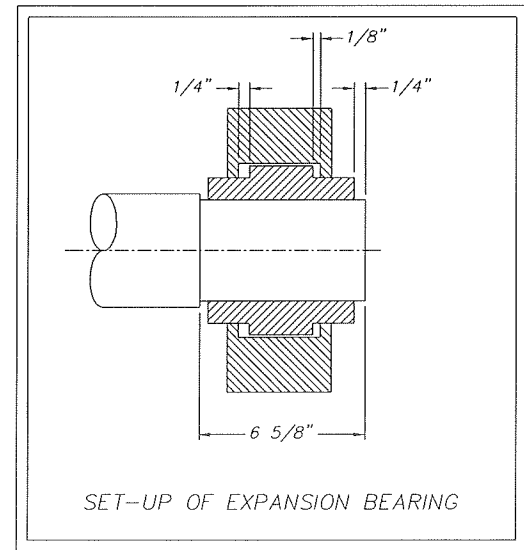


LONG PADDLE#2 120° BEHIND SCRAPER#1
 LONG PADDLE#3 120° BEHIND LONG PADDLE#2
 LONG PADDLE#4 120° BEHIND LONG PADDLE#3
 LONG PADDLE#5 120° BEHIND LONG PADDLE#4
 LONG PADDLE#6 120° BEHIND LONG PADDLE#5

LONG PADDLE#11 120° BEHIND SCRAPER#12
 LONG PADDLE#10 120° BEHIND LONG PADDLE#11
 LONG PADDLE#9 120° BEHIND LONG PADDLE#10
 LONG PADDLE#8 120° BEHIND LONG PADDLE#9
 LONG PADDLE#7 120° BEHIND LONG PADDLE#8



CCW ROTATION & CENTER DISCHARGE



AMERICAN PROCESS SYSTEMS
 American Process Systems
 Erich Machines, Inc.
 4033 Ryan Road, Gurnee, IL 60031

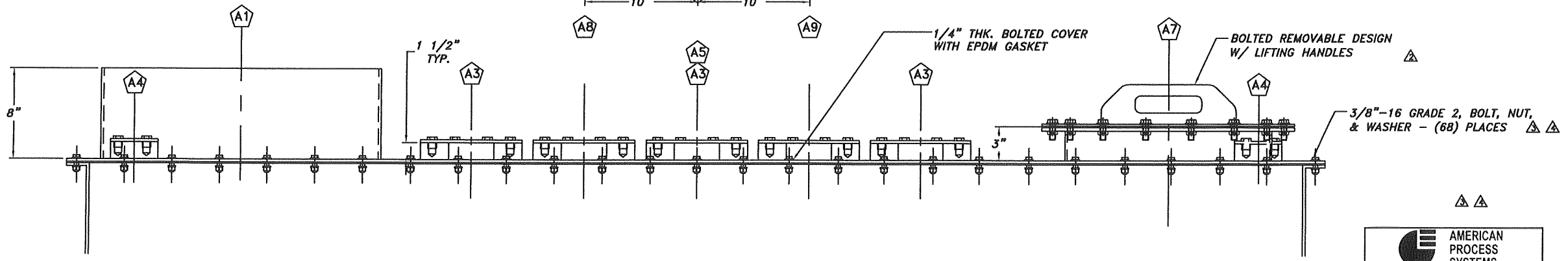
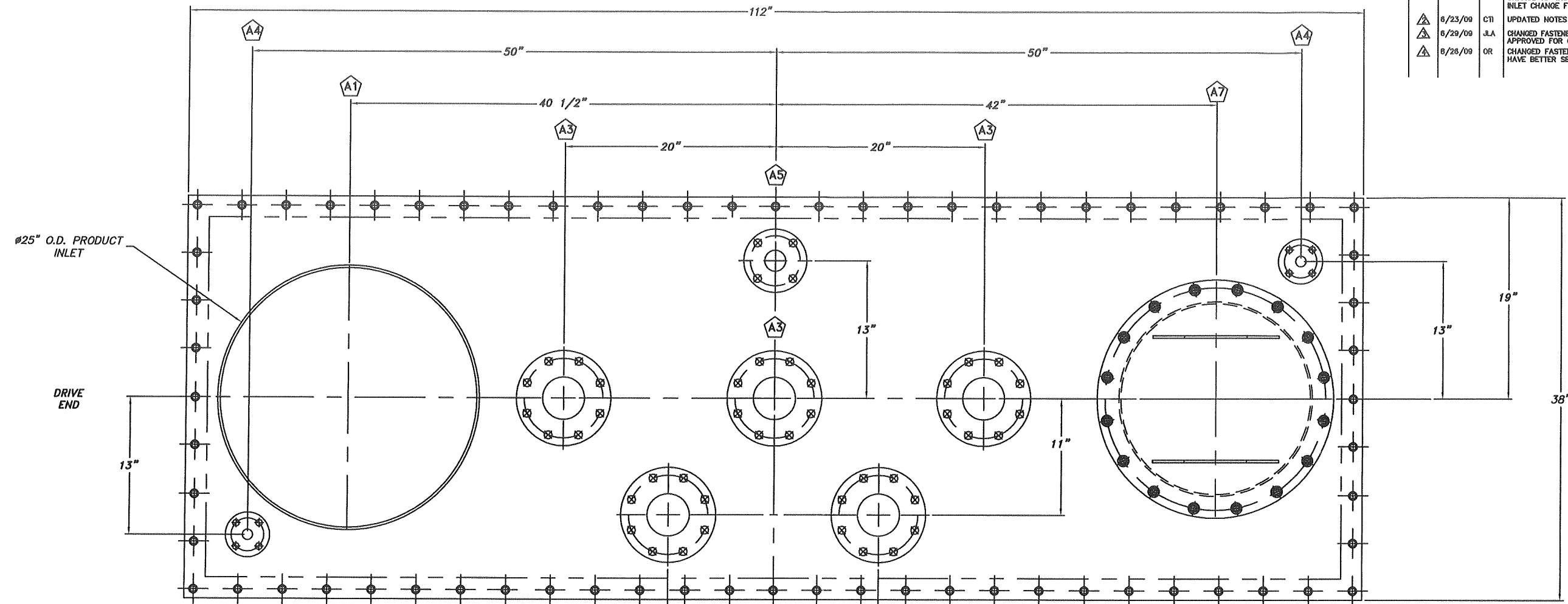
APPROVED RESUBMISSION REQUIRED
 APPROVED AS NOTED NOT APPROVED, SEE ATTACHED

DRAWINGS DUE BACK BY: _____
 DATE _____ APPROVED BY _____

LIW HOPPER A&B (R2201, R2202) AGITATOR			
ASSEMBLY/WELDMENT	SCALE: 1/8"	APPROVED BY: _____	DRAWN BY: ALCALAJ
	DATE: 06/12/09		JOB REF NO: _____
U050 AGITATOR ASSEMBLY/WELDMENT			
TOLERANCES UNLESS SPECIFIED ARE:	DRAWING NUMBER		
FRACTIONAL : ± 1/32"	U0509346641 3496641 00 011-LAYOUT		
ANGULAR : ± 1°			
.XXX DECIMAL : ± .005			
.XX DECIMAL : ± .01			

ROTOR FOR 109030

NO.	DATE	BY	DESCRIPTION OF REVISION	CRD BY
△	6/8/09	CTI	UPDATED NOZZLE SCHEDULE ADDED 2 - 4" STUD PADS CHANGE 18" INSPECTION PORT TO BOLTED DESIGN INLET CHANGE FROM 18" TO 25"	
△	6/23/09	CTI	UPDATED NOTES	
△	6/29/09	JLA	CHANGED FASTENERS GRADE FROM 5 TO 2 AND QTY APPROVED FOR CONSTRUCTION NOTE.	
△	6/28/09	OR	CHANGED FASTENERS QTY, FORM 34 TO 68 TO HAVE BETTER SEAL, NOTE CHANGED FOR RECORD	



NOZZLE SCHEDULE					
TAG	QTY.	SIZE IN.	DESCRIPTION	FLANGE TYPE	LOCATION
A1	1	25"	PRODUCT INLET		COVER
A3	3	4"	CIP	STUD PAD W/A BLIND FLANGE, 150# ANSI PATTERN	COVER
A4	2	1"	AIR	STUD PAD W/A BLIND FLANGE, 150# ANSI PATTERN	COVER
A5	1	2"	WATER FLUSH	STUD PAD W/A BLIND FLANGE, 150# ANSI PATTERN	COVER
A7	1	18"	INSPECTION PORT		COVER
A8	1	4"	VACUUM RELIEVE	STUD PAD W/A BLIND FLANGE	COVER
A9	1	4"	PRESSURE RELIEVE	STUD PAD W/A BLIND FLANGE	COVER


AMERICAN PROCESS SYSTEMS
 American Process Systems
 Erich Machines, Inc.
 4033 Ryan Road, Gurnee, IL 60031

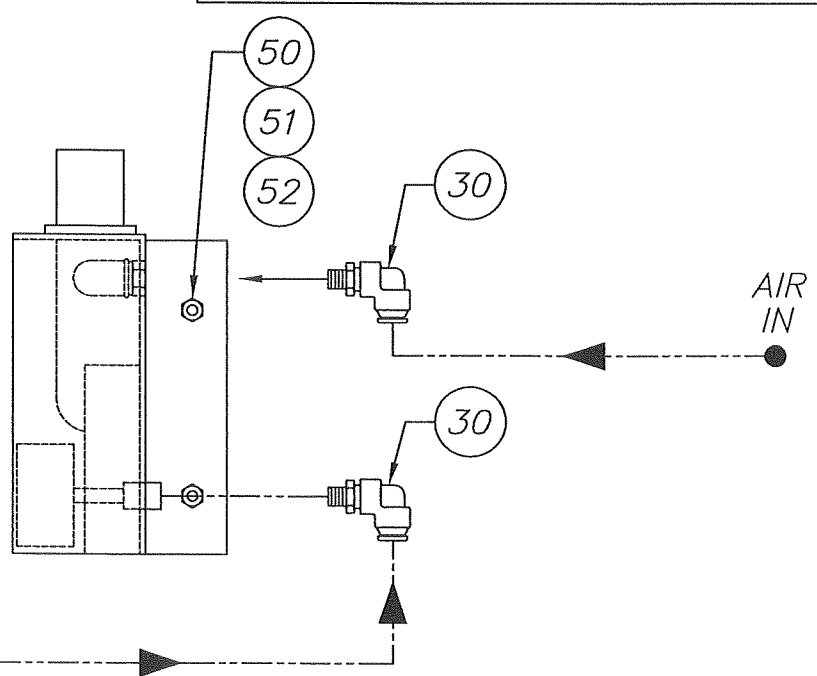
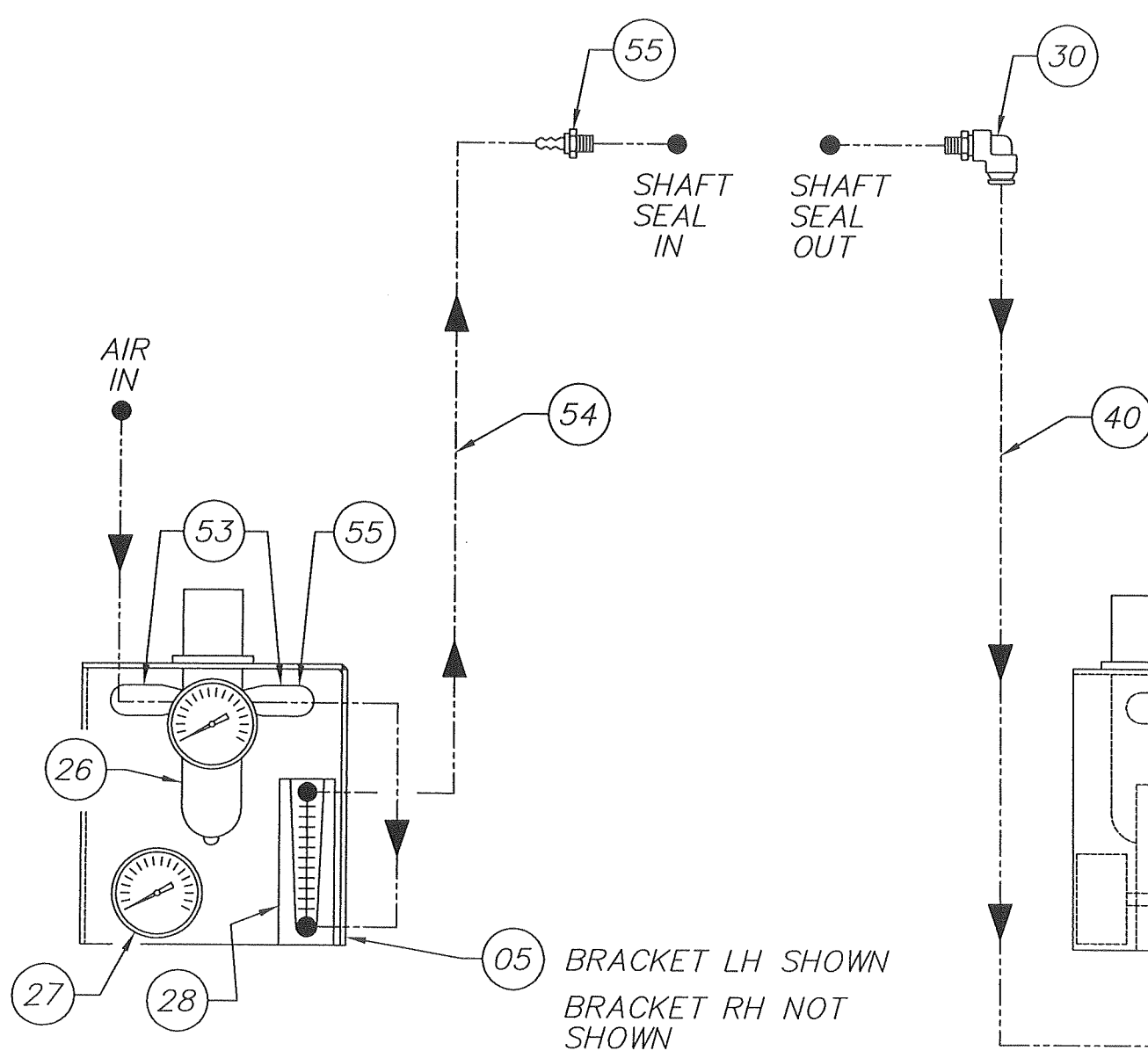
DRAWINGS FOR RECORD


AMERICAN PROCESS SYSTEMS
 American Process Systems
 Erich Machines, Inc.
 4033 Ryan Road, Gurnee, IL 60031
 www.erichusa.com/aps

MODEL NO: U060/6643 EQUIPMENT TYPE: DPB-60 SERIAL NO: 6643 USA	DUPONT/DANISCO (DDCE) SCALE: 3/16 DATE: 06/02/09 APPROVED BY: DRAWN BY: OR JOB REF NO:
TOLERANCES UNLESS SPECIFIED ARE: FRACTIONAL : ± 1/4" ANGULAR : ± 2°	DPB-60 DOUBLE PADDLE BLENDER COVER FOR V2211 GENERAL ARRANGEMENT DRAWING NUMBER 6643 01 041

NO.	DATE	BY	DESCRIPTION OF REVISION	CHKD BY
△5	12/8/06	AG	ORDER PNEUMATIC COMPONENTS DIRECT.	
△6	2/26/06	AG	FLOWMETER WEAR PARTS.	

05	A005036X0099	BRACKET WELDMENT
△6 25	A005036125	FLOWMETER WEAR PARTS
△6 26	NANB07101M1EASA	FILTER/REG, 1/8" NPT W/ 0-15 PSI GAUGE
△6 27	NGZ71141512015	PRESSURE GAUGE, 0-15 PSI
△6 28	NFZF751SCFMS	FLOWMETER, 0.3-3.0 SCFM
30	NBP169PL62	1/8" NPT X 3/8" TUBE SWIVEL 90°
40	NBP37093	3/8" X .062 PARAFLEX
50	FXWS025062C	1/4"-20 WELD STUD, 5/8" L
51	FXHN025C	1/4"-20 SS HEX NUT
52	FXLW025	1/4" SS LOCK WASHER
53	SSR0190	STREET ELBOW 1/8" NPT
54	NBZ37062	1/4" ID X 3/8" OD PVC TUBING
△5 55	NBM5372K111	1/8" NPT X 1/4" TUBE BARBED FITTING



05 BRACKET LH SHOWN
BRACKET RH NOT SHOWN

'X'	MATERIAL
1	304SS
2	A-36
3	316LSS
4	304LSS
5	316SS



4033 Ryan Road, Gurnee, IL 60031

ASSEMBLY	SCALE: NONE	APPROVED BY:	DRAWN BY:
	DATE: 9/15/06		JOB REF NO:
SEAL FLOW METER KIT (RT<)			
A005036X00		DRAWING NUMBER 360X005 00 063	

TOLERANCES UNLESS SPECIFIED ARE:
 FRACTIONAL : ± 1/32"
 ANGULAR : ± 1°
 .XXX DECIMAL : ± .005
 .XX DECIMAL : ± .01