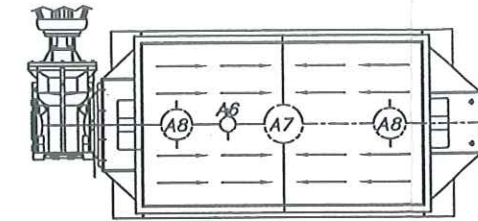


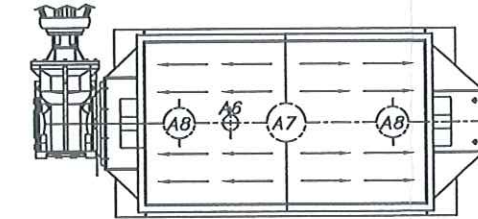
- NOTES:**
- CONSTRUCTION: 304L STAINLESS STEEL**  
ALL CONTACT SURFACES INCLUDE 1/16" CORROSION ALLOWANCE  
TANK: 1/4" THK.  
END PLATES: 1/4" THK.  
BEARING PLATE & GUSSETS (N.D.E.): 1/4" THK.  
BEARING PLATE & GUSSETS (D.E.): 3/8" THK.  
SHAFT: 4 1/4" #  
PADDLES & POSTS: (12) 1/2" THK.  
AGITATOR SPEED: APPROXIMATELY 20 RPM FINAL  
AGITATOR CLEARANCE: 1/8" NOMINAL (CCW ROTATION)  
NOTE: AGITATOR TO RUN IN REVERSE FOR ABORT/WASTE DISCHARGE COVER: 1/4" THK.  
BOLTS: GRADE 2  
NUTS: GRADE 2  
FLANGE GASKETS: EPDM
  - FINISHES:**  
INTERIOR WELDS: CONTINUOUS GROUND SMOOTH AND POLISHED  
INTERIOR SURFACES (TANK): 2B MILL FINISH. ALL IMPERFECTIONS POLISHED TO #3 (80 GRIT) FINISH  
INTERIOR SURFACES (AGITATOR): POLISHED TO #3 (80 GRIT) FINISH #3 (80 GRIT)  
EXTERIOR WELDS: EIRICH STANDARD EXTERIOR 'AS WELDED' CONDITION (MINIMAL INCLUSIONS, NO UNDERCUTS, WITH ANY SHARP EDGES, WELD SPLATTER, SLAG, AND HIGH SPOTS REMOVED)  
EXTERIOR SURFACES: MILL FINISH
  - PAINT:**  
PRIMER: HI-TEMP 1027  
PAINT: HI-TEMP 500VS (SW 6003 PROPER GRAY)  
AREAS INTENDED FOR INSULATION: (2) COATS PRIMER, 8 MILS MINIMUM TOTAL THICKNESS  
AREAS WHICH ARE UN-INSULATED, INCLUDING DRIVE COMPONENTS: (1) COAT PRIMER, 5 MILS MINIMUM (1) COAT PAINT, 2 MILS MINIMUM  
STAINLESS STEEL SURFACES: NO COATING
  - ELECTRICAL:**  
CONTROLS/STARTERS: NONE INCLUDED  
CLASSIFICATION: CLASS I, DIVISION II, GROUP D  
VOLTAGE (COMPONENTS): 110/60  
VOLTAGE (MOTORS): 460/60/3 PHASE  
WIRING: BY OTHERS
  - SAFETY:**  
ALL PROCESS CONNECTIONS MUST BE IN PLACE DURING OPERATION. OPERATOR SAFETY AND OSHA/ANSI COMPLIANCE IS THE CUSTOMER'S RESPONSIBILITY.
  - WEIGHT:**  
APPROXIMATE BLENDER EMPTY WEIGHT: 4500 LBS.
  - DESIGN PARAMETERS:**  
100° C  
+ .5 PSIG INTERNAL PRESSURE  
-10" WC EXTERNAL PRESSURE  
ALL INTERNAL ANGLES LESS THAN 135° HAVE A 1/4" MIN RADIUS

**PLANT:** DDCE VONORE, TN  
**EQUIPMENT NO:** V2201  
**ORDER NO:** DDCE11-0051  
**EQUIPMENT DESCRIPTION:** LIW HOPPER PADDLE MIXER 'A'  
**MTL OF CONST:** 304L SS  
**PRESS/TEMP RATING:** +.5 PSI / 100° C  
**EMPTY WEIGHT:** 4500 LBS  
**MFR:** EIRICH MACHINES, INC GURNEE, IL  
**DATE OF MFR:** 08/2009

**PLANT:** DDCE VONORE, TN  
**EQUIPMENT NO:** V2202  
**ORDER NO:** DDCE11-0051  
**EQUIPMENT DESCRIPTION:** LIW HOPPER PADDLE MIXER 'B'  
**MTL OF CONST:** 304L SS  
**PRESS/TEMP RATING:** +.5 PSI / 100° C  
**EMPTY WEIGHT:** 4500 LBS  
**MFR:** EIRICH MACHINES, INC GURNEE, IL  
**DATE OF MFR:** 08/2009



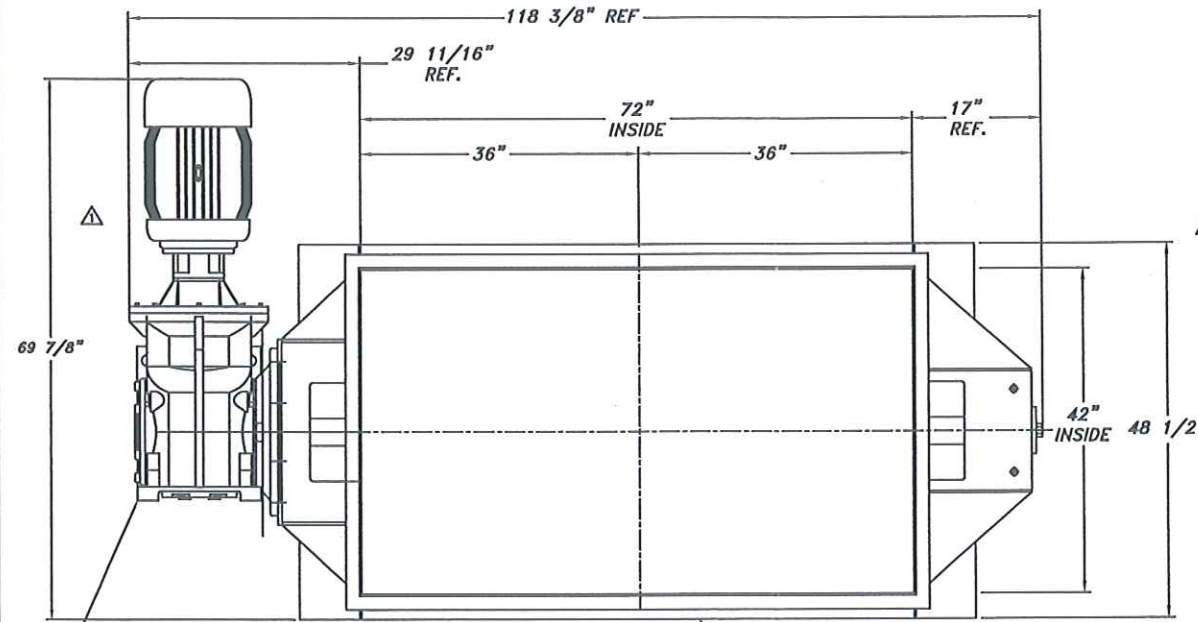
MIX/RUN PRODUCT FLOW TO PRIMARY DISCHARGE



REVERSE AGITATOR/WASTE DISCHARGE PRODUCT FLOW

TANK NOZZLE SCHEDULE

NO.	DESCRIPTION	QTY.	LOCATION	SIZE	FLANGE TYPE	PROJECTION	REMARKS
A6	DRAIN	1	TANK	2"	STUD PAD W/ BLIND FLANGE	1 1/2"	
A7	PRIMARY DISCHARGE	1	TANK	10"	STUD PAD	1 1/2"	
A8	ABORT DISCHARGE (WASTE)	2	TANK	8"	STUD PAD	1 1/2"	



SEW-EURODRIVE REDUCER KAF127AM256  
89.89 RATIO, 1.9 SF., 20 RPM OUTPUT W/ 20 HP BALDOR MOTOR  
256TC, 841-XL, 460/60/3 COMPLIANT WITH DDCE STANDARD  
E6100 MOTOR SPECIFICATIONS REV. 5, INCLUDING SUITABILITY FOR CLASS II, DIV II, GROUP D AREA CLASSIFICATION.

(1) PIECE BOLTED GASKETED COVER (NOT SHOWN)  
(SEE DRAWING 6641 01 XX1)

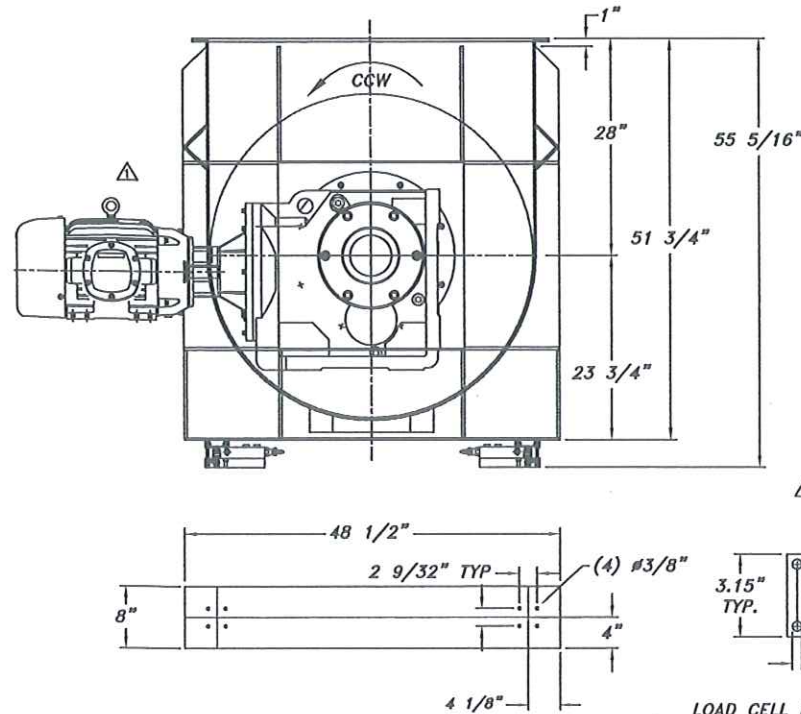
TANK STIFFENER ANGLE  
4" X 4" X 1/4" 304L SS

WOODDEX MECO MODEL AHU SHAFT SEALS INCLUDING:  
304SS HOUSING, MECO 3000 POLYMER-FILLED PTFE ROTOR, EPDM ELASTOMER, PTFE COATED ADJUSTING GASKET (TYP. EACH END)

TYPE 'ERPB' PILLOW BLOCK BEARING (EXPANSION TYPE)  
3 15/16" BORE

HARDY INSTRUMENT STAINLESS STEEL LOAD CELL PACKAGE INCLUDES:

- 4 SS CELLS WITH ZINC MOUNTED PLATES, SYSTEM HI-459K-45: 9K LB/4.1 MT- 4 POINT SYSTEM INCLUDING (1) HI-HLPS2.25K-45B, (1) HI-HLPS2.25K-45F AND (2) HI-HLPS2.25K-45S C2 LOAD POINTS.
- 40' OF EIGHT CONDUCTOR LOAD CELL CABLE
- ONE NEMA 4X/IP 66 SS ENCLOSURE WITH SUMMING CARD
- ONE NEMA 4X SS WALL MOUNT ENCLOSURE WITH WEIGH MODULE AND SECURE MEMORY MODULE.



LOAD CELL BASE AND VESSEL MOUNTING TEMPLATE

(4) 5/8"-11 TAPPED HOLES ON 4 3/4" B.C.D.

(12) 7/8"-9 TAPPED HOLES ON 14 1/4" B.C.D.

DISCHARGE FLANGE DETAILS FOR 2", 8", AND 10" ANSI 150# PATTERN

(8) 3/4"-10 TAPPED HOLES ON 11 3/4" B.C.D.

2 IDENTICAL UNITS SUPPLIED

MODEL NO: 6050/6642  
EQUIPMENT TYPE: DPB-50  
SERIAL NO: 6642 USA

MODEL NO: 6050/6641  
EQUIPMENT TYPE: DPB-50  
SERIAL NO: 6641 USA

TOLERANCES UNLESS SPECIFIED ARE:  
FRACTIONAL: ± 1/4"  
ANGULAR: ± 2°

APPROVED FOR CONSTRUCTION

DIMENSIONS AND DESIGN APPROVED BY USER AND/OR AGENT  
DATE: 6/26/09



AMERICAN PROCESS SYSTEMS

American Process Systems  
Eirich Machines, Inc.  
4033 Ryan Road, Gurnee, IL 60031  
www.eirichusa.com/aps

V2201 LIW 'A'

V2202 LIW 'B'

DUPONT/DANISCO (DDCE)

SCALE: 1:12 APPROVED BY: DRAWN BY: CTI  
DATE: 6/1/09 JOB REF NO:

DPB-50 DOUBLE PADDLE BLENDER

GENERAL ARRANGEMENT DRAWING NUMBER  
6641 00 041