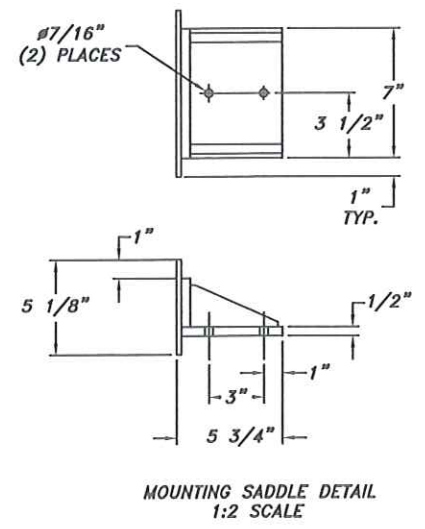
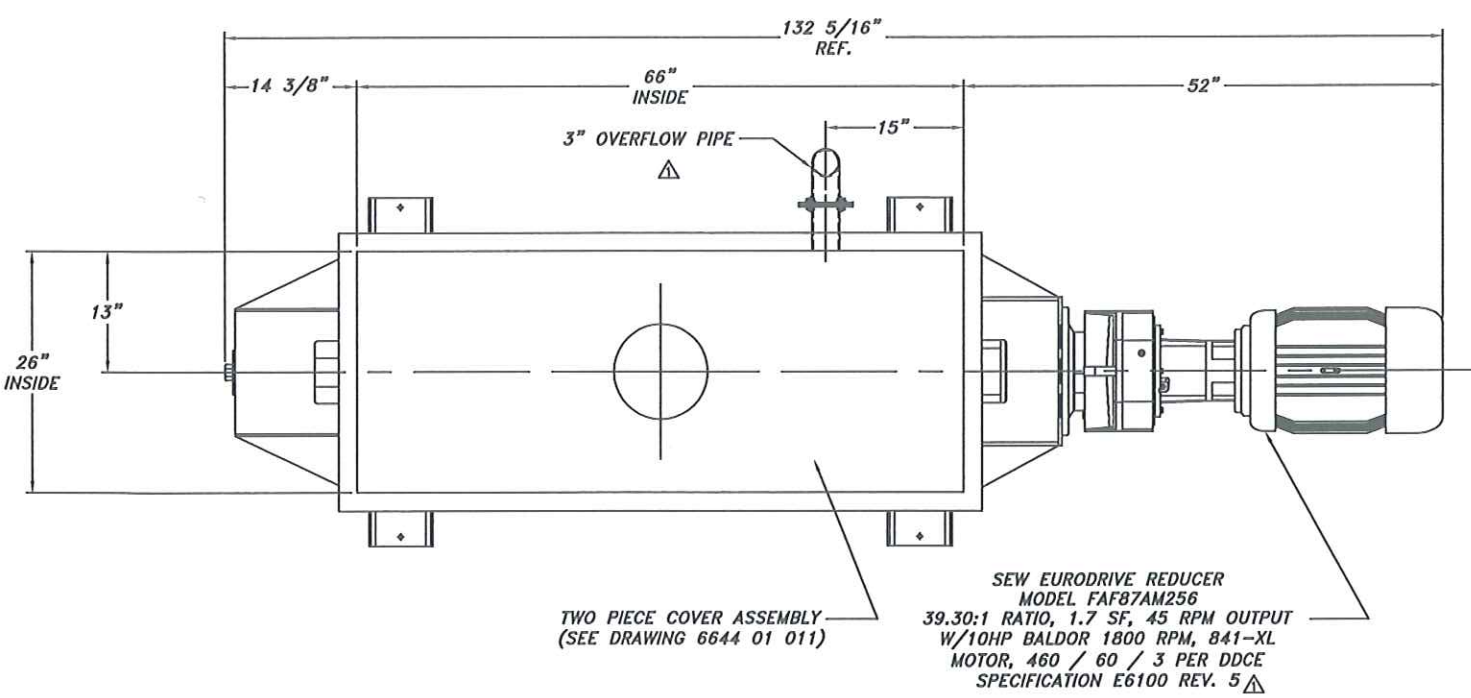
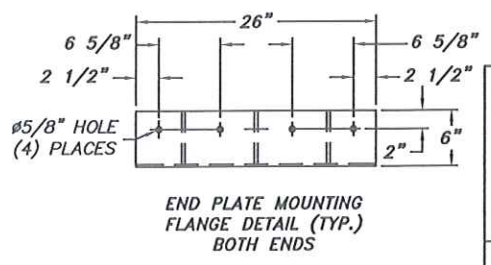
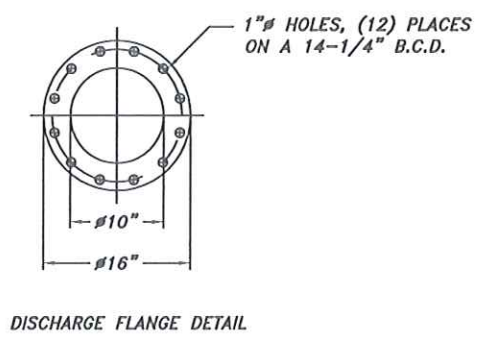
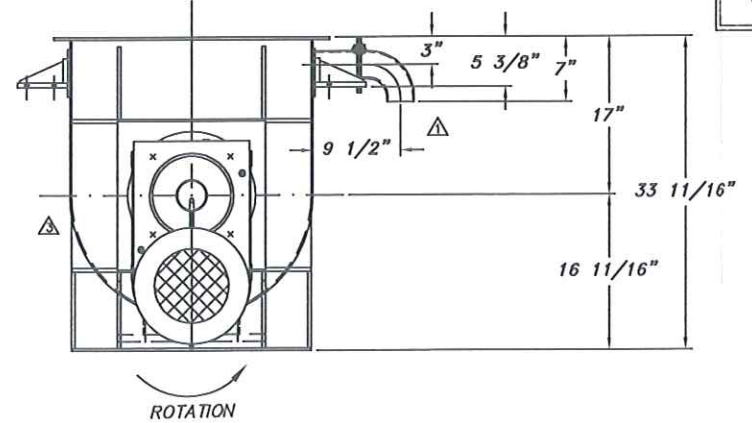
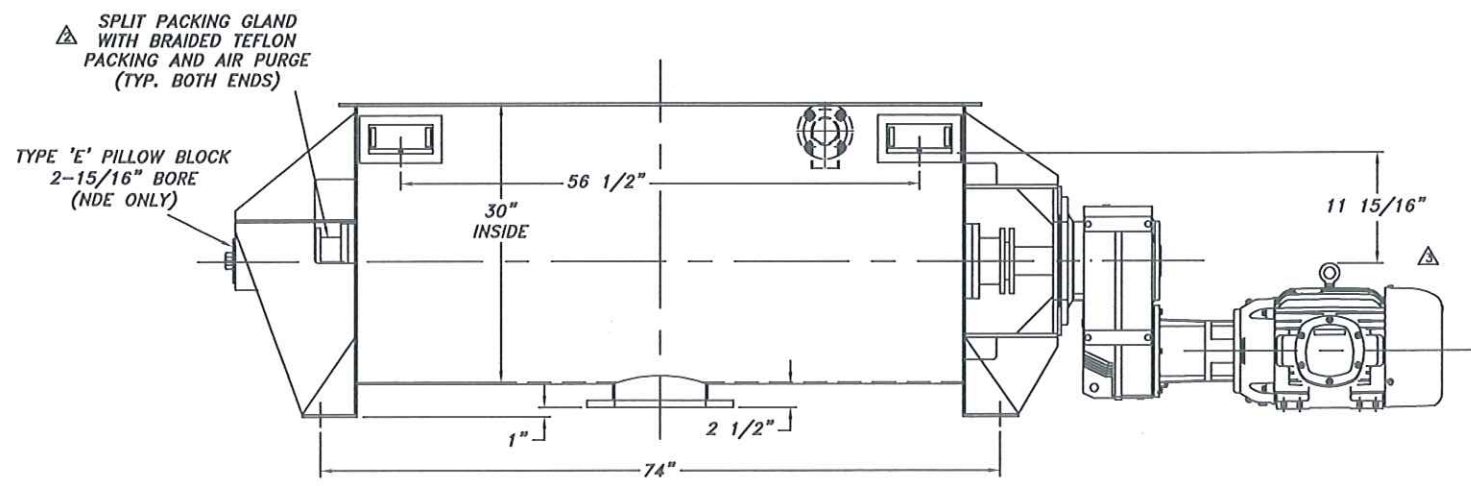


NO.	DATE	BY	DESCRIPTION OF REVISION	CHD BY
△	6/5/09	CTI	ADDED EQUIPMENT TAGS ADDED OVERFLOW PIPE, OTHER CHANGES PER ENG. ADDED COVER SPECIFICATIONS AND UPDATED PAINT NOTE. MOTOR SPEC. CHANGE FROM REV 3 TO REV 5	
△	6/19/09	CTI	UPDATED EQUIPMENT NUMBER, PAINT NOTE & PRESS/TEMP NOTE	
△	6/25/09	CTI	UPDATED PACKING GLAND NOTE UPDATED MOTOR ORIENTATION	
△	07/01/09	OR	APPROVED FOR CONSTRUCTION NOTE	



- NOTES:
- CONSTRUCTION: (ALL CONTACT SURFACES INCLUDE 1/16" CORROSION ALLOWANCE)
TANK: 7 GA. C.S.
END PLATES: 1/4" C.S.
BEARING PLATE & GUSSETS (N.D.E.): 1/4" C.S.
BEARING PLATE & GUSSETS (D.E.): 3/8" C.S.
REDUCER MOUNTING PLATE: 3/8" C.S.
SHAFT: 3-1/8" C.S.
AGITATOR SPEED: 45 RPM
POSTS: (5) 1/2" THK C.S.
INNER RIBBONS: 1/4" X 2" C.S.
OUTER RIBBONS: 3/8" X 1-1/2" C.S.
AGITATOR CLEARANCE: $\leq 1/4"$ (CW ROTATION)
COVER: 12 GA C.S.
BOLTS: GRADE 5 △
NUTS: GRADE 5 △
FLANGE GASKETS: EPDM
 - FINISHES:
INTERIOR SURFACES: MILL FINISH
INTERIOR WELDS: GROUND SMOOTH
EXTERIOR SURFACES: MILL FINISH
EXTERIOR WELDS: WIRE WHEEL CLEANED
 - PAINT: △△
PRIMER: HI-TEMP 1027
PAINT: HI-TEMP 500VS (SW 6003 PROPER GRAY)
ALL AREAS WHICH ARE UN-INSULATED, INCLUDING DRIVE COMPONENTS: (1) COAT PRIMER, 5 MILS MINIMUM (1) COAT PAINT, 2 MILS MINIMUM
 - ELECTRICAL:
CONTROLS/STARTERS: NONE INCLUDED
COMPONENTS: NEMA 4/12
VOLTAGE: 110/1 PHASE, 460/60/3 PHASE
WIRING: BY OTHERS
 - SAFETY:
ALL PROCESS CONNECTIONS MUST BE IN PLACE DURING OPERATION. OPERATOR SAFETY AND OSHA/ANSI COMPLIANCE ARE THE CUSTOMER'S RESPONSIBILITY
 - WEIGHT:
APPROXIMATE BLENDER EMPTY WEIGHT: 2500 LBS.



△

APPROVED FOR CONSTRUCTION

DIMENSIONS AND DESIGN APPROVED BY USER AND/OR AGENT

DATE: 06/26/09

AMERICAN PROCESS SYSTEMS
Erich Machines, Inc.
4033 Ryan Road, Gurnee, IL 60031

PLANT:	DDCE VONORE, TN
EQUIPMENT NO:	V9012
ORDER NO:	DDCE11-0051
EQUIPMENT DESCRIPTION:	LIW FEEDER 'SLUDGE' PADDLE MIXER
MTL OF CONST:	C.S.
PRESS/TEMP RATING:	ATMOSPHERIC/65.5° C
EMPTY WEIGHT:	2500 LBS
MFR:	EIRICH MACHINES, INC GURNEE, IL
DATE OF MFR:	08/2009

V9012 'SLUDGE' PADDLE MIXER	
DUPONT / DANISCO (DDCE)	
MODEL NO: U024/6644	EQUIPMENT TYPE: DRB-24
SERIAL NO: 6644 USA	SCALE: 1/10
DATE: 06-02-09	APPROVED BY: M.J.F.
DRB-24 DOUBLE RIBBON BLENDER (PADDLE MIXER)	
GENERAL ARRANGEMENT	DRAWING NUMBER 6644 OD 041

#109010