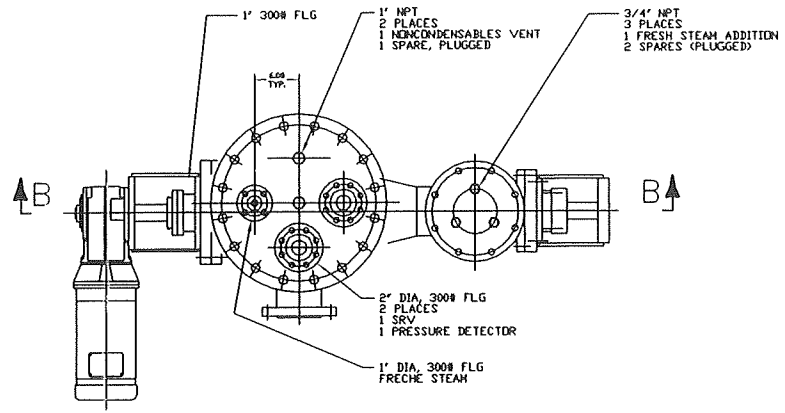
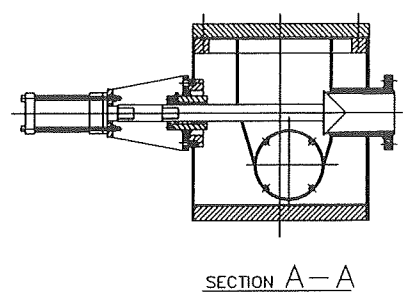
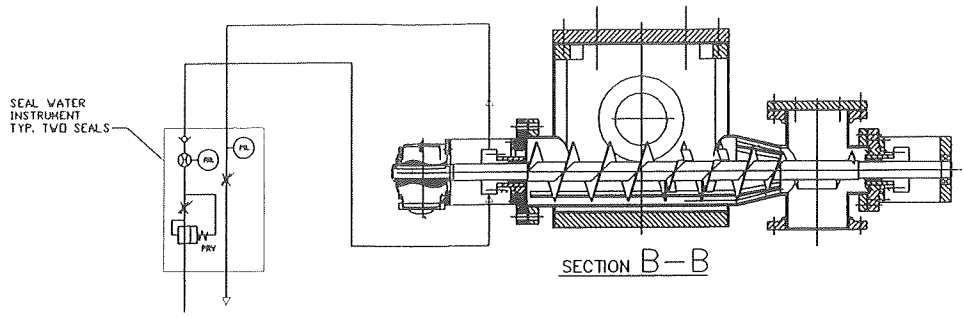


Rev.	Description	Date	By	App'd
01	ISSUED FOR FABRICATION	01/10/12
02	REVISIONS TO DRAWING	01/10/12
03	REVISIONS TO DRAWING	01/10/12
04	REVISIONS TO DRAWING	01/10/12



PRESSURIZED SHREDDING SCREW
 CY-2102
 8" DIA SCREWS
 CAPACITY 1 L/REV

DRIVE
 HELICAL WORM
 FALK 06U/BQ2A8.0
 B1

MOTOR
 7.5HP, 1800 RPM
 213TC FRAME TEFC
 460V, 60Hz

SPEED
 FIXED 213 RPM

ALL MATERIALS, WORKMANSHIP AND FABRICATION TO BE PER ASME CODE SECTION VIII DIV. 1 2007 EDITION OR ADDENDUM AND PERMANENT CODES FOR UNIFIED PRESSURE VESSELS.

MAX DESIGN PRESSURE 215 PSIG AT 134°F

MIN DESIGN METAL TEMP 32°F AT 215 PSIG

IMPACT TEST NONE

X-RAY NONE

HYDR. TEST PRESSURE 200 PSIG

CORROSION ALLOWANCE 1/16"

MATERIAL OF CONSTRUCTION IN CONTACT WITH PROCESS

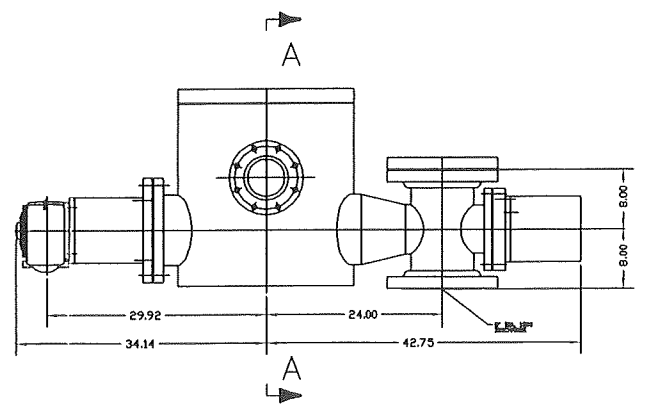
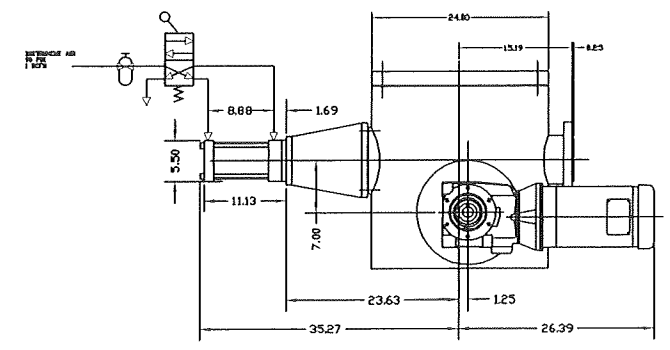
UNS S31803

UNS S32550

OR

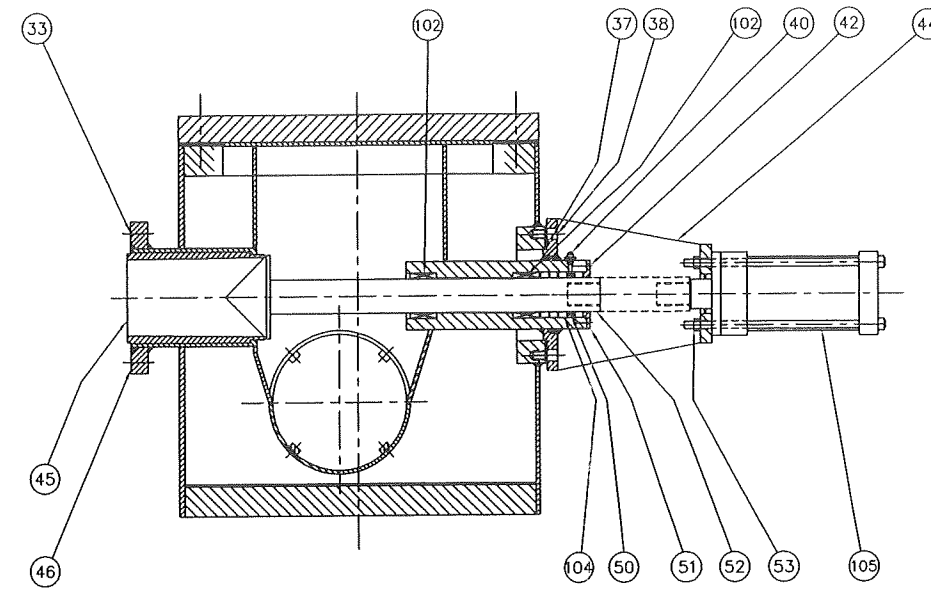
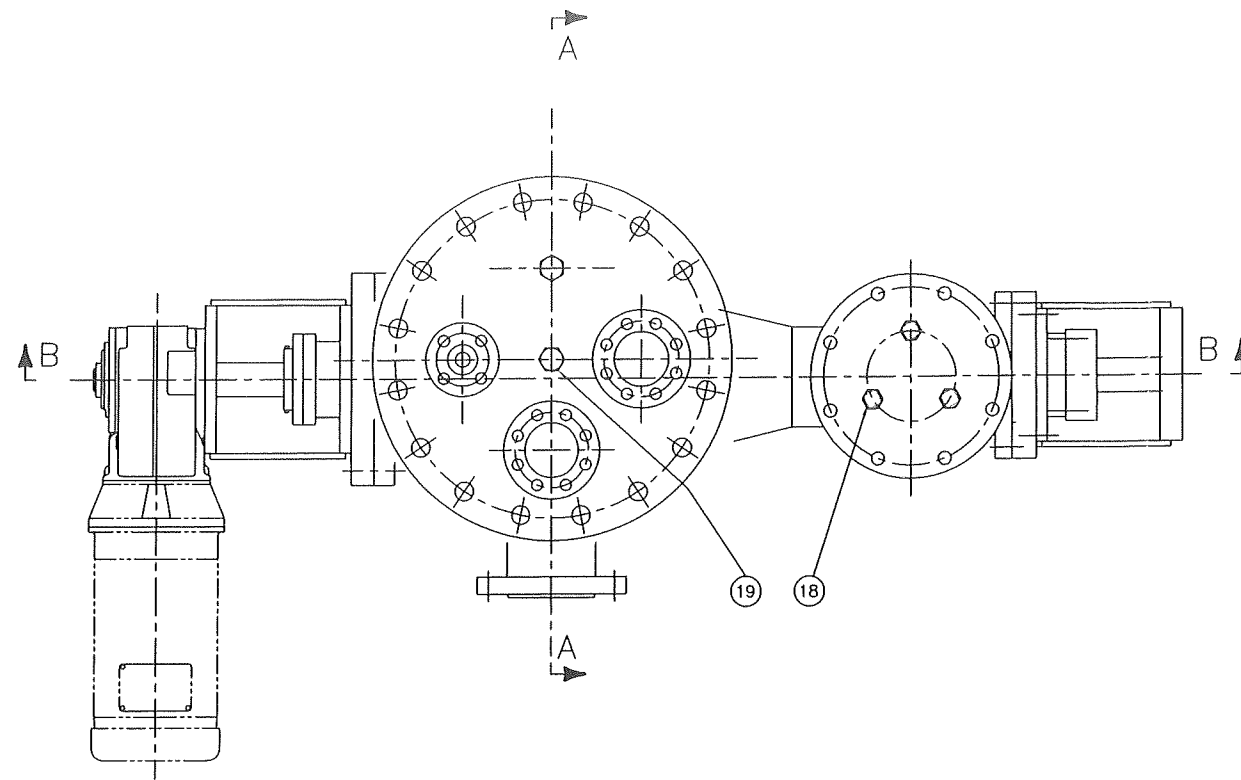
UNS S32750

TBD

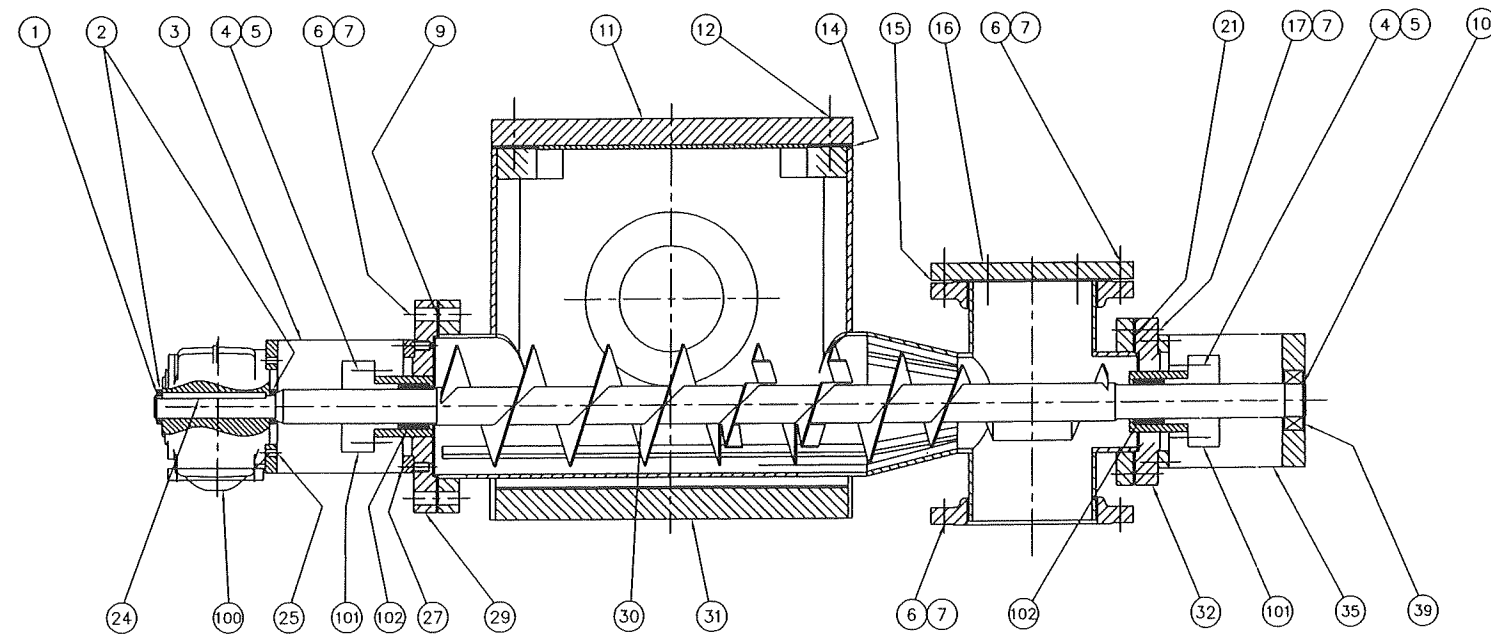


UNIVERSITY OF FLORIDA	ATL F000312	04/11/12
PROJECT: PERRY FLORIDA	PROJECT NO: 0569-31A	DATE: 01/10/12
INSTALLATION: 210123	DESIGNER: [Signature]	CHECKED: [Signature]
SHREDDER/HOOKS CONVEYOR	SCALE: 1/2" = 1'-0"	DATE: 01/10/12
8" DIA	ATL F000312	01/10/12

#108647



SECTION A-A

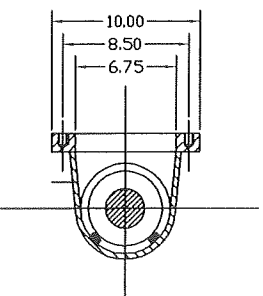
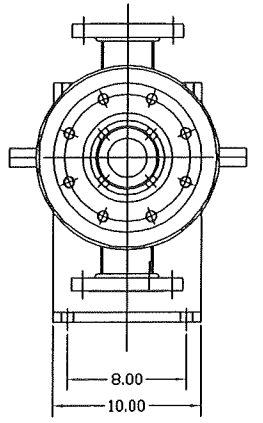
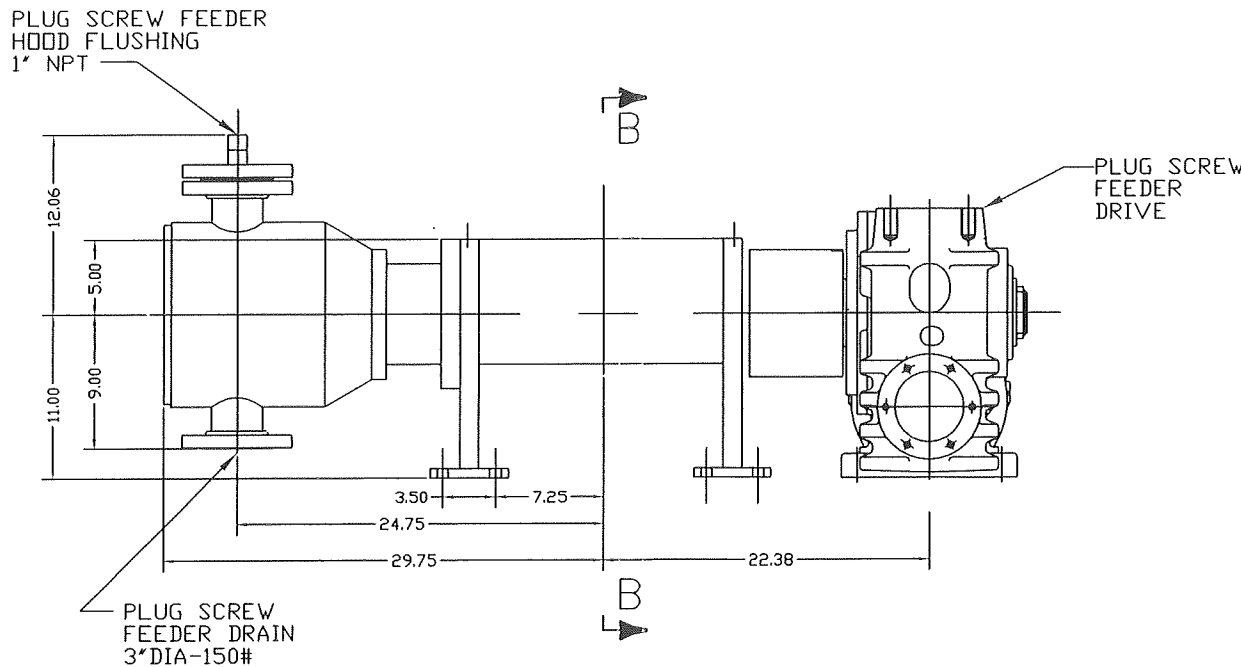
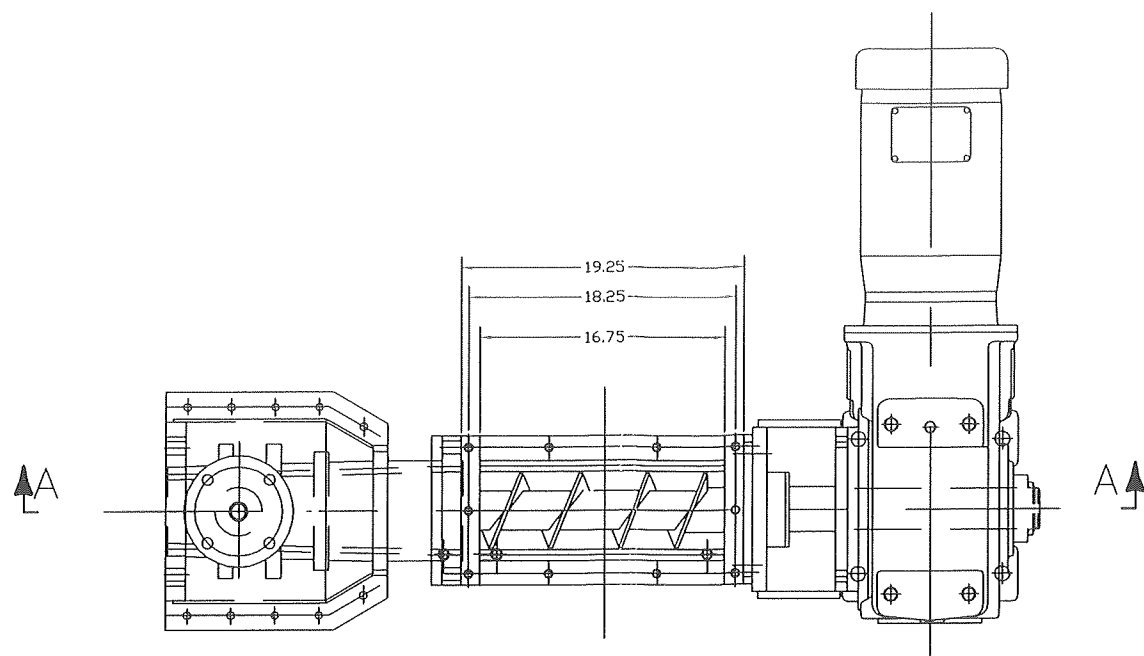


SECTION B-B

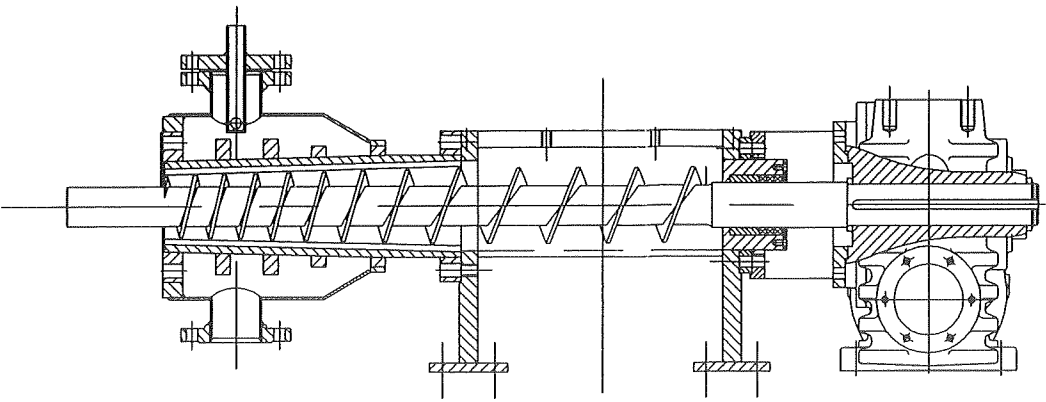
ALL MATERIALS, WORKMANSHIP AND FABRICATION TO BE PER ASME CODE SECTION VIII DIV. 1 2008 EDITION, PERMISSIBLE AND REGIONAL CODES FOR UNFIRE PRESSURE VESSELS.
 MAX DESIGN PRESSURE 210_PSG AT 366F.
 MIN DESIGN METAL TEMP 32_F AT 210_PSG.
 IMPACT TEST NONE.
 X-RAY NONE.
 HYDR TEST PRESSURE 280_PSG
 CORROSION ALLOWANCE .00"

REV	DATE	DESCRIPTION	BY	CHKD
1		ISSUED FOR FABRICATION		
TEC PIPE AND SHREDDER CONV. 24" DIA/8" DIA				
Dmetso paper		030415 030415	ATLF000324_01.00 1/1	1/1 1/00
ATLF000324			1/1	

Revisions			
No.	Description	Date	By
1	ISSUED FOR BIDDING	01/11/83	ATL
2	REVISED TO REFLECT CHANGES	01/11/83	ATL



SECTION B-B

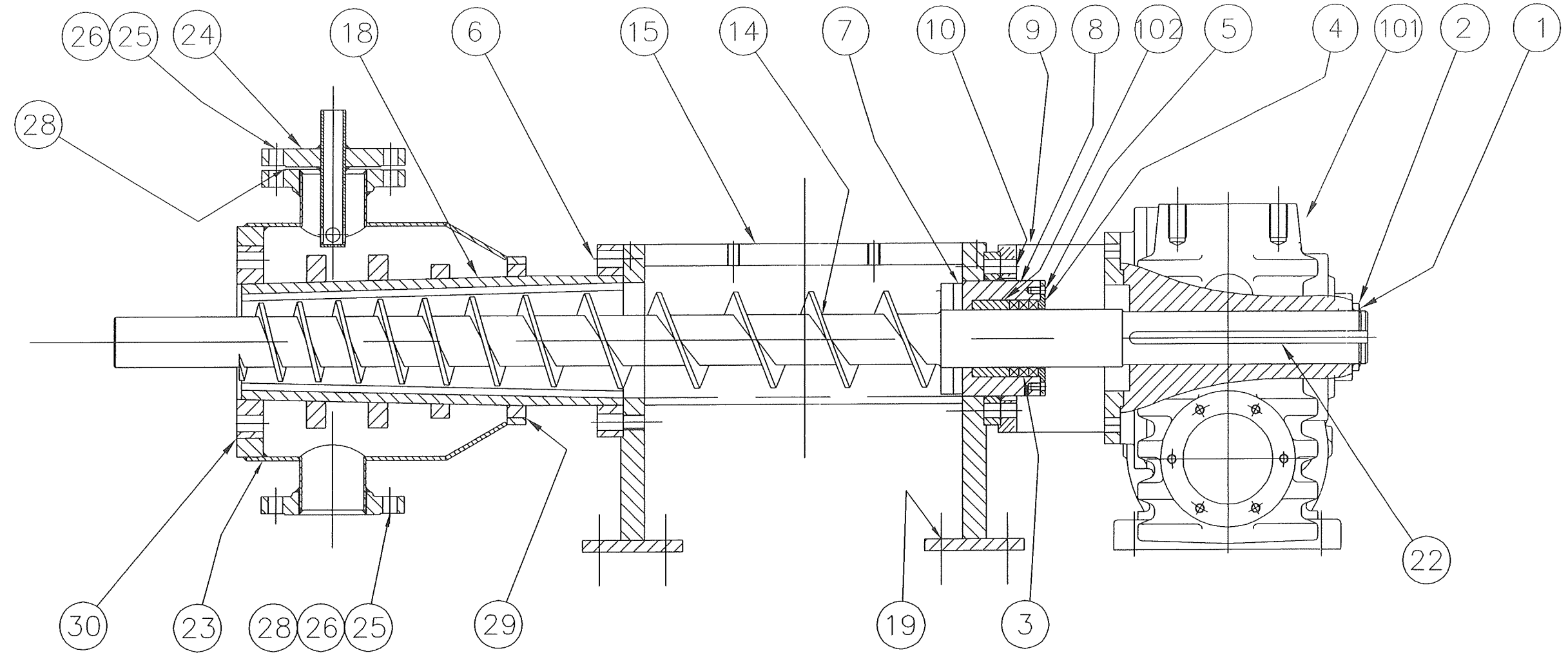


SECTION A-A

ATMOSPHERIC PLUG SCREW FEEDER
 5" DIA SCREWS
 FE-2101
 CAPACITY 1L/REV
 DRIVE
 HELICAL WORM
 FALK 05UW802AB56
 S61
 MOTOR
 15HP, 1800 RPM
 254TC FRAME TEFC
 460V, 60Hz
 SPEED 15-45 RPM
 NOMINAL 30 RPM
 THIS IS AN ATMOSPHERIC EQUIPMENT
 MAX DESIGN PRESSURE: 14.7 PSIG
 MAX OPERATING TEMPERATURE: 250 DEG F
 MATERIAL OF CONSTRUCTION
 IN CONTACT WITH PROCESS
 UNS S30403

UNIVERSITY OF FLORIDA	PROJECT NO. ATL000311	DATE 01/11/83
PROJECT PERRY FLORIDA	DESIGN NO. FE-2101	SCALE 1/2" = 1'-0"
DESIGNED BY [Signature]	CHECKED BY [Signature]	DATE 01/11/83
APPROVED BY [Signature]	DATE 01/11/83	
ATMOSPHERIC PLUG SCREW FEEDER		
5" DIA		
	ATLF000311	01/11/83

Revision		Approved	
Rev.	Description	Drawn sign.	Sign.



THE INFORMATION CONTAINED HEREIN IS CONFIDENTIAL AND PROPRIETARY INFORMATION BELONGING EXCLUSIVELY TO STORA ENSO PAPER INDUSTRIES AB AND/OR ITS SUBSIDIARY COMPANIES, AND SHALL NOT BE DISCLOSED OR REPRODUCED IN ANY MANNER WITHOUT THE WRITTEN PERMISSION OF STORA ENSO PAPER INDUSTRIES AB OR A SUBSIDIARY COMPANY THEREOF.

POS NO	QUANT	DESIGNATION/DIMENSIONS/MATERIAL/DRAWING		NET WEIGHT TOT ABT KG	
PLUG SCREW FEEDER		5" DIA., ATMOSPHERIC		p:\fiber\cadn\projects\ATLF\ATLF2	
DRAWN		DATE	CAD FILE ID	SHEET	REV
CK		100825	ATLF200322_01.00	1 / 1	00
CHECKED		DATE	MODEL FILE ID	DWG No.	
APPROVED		DATE	SCALE	ATLF200322	
			1/4" = 1"		