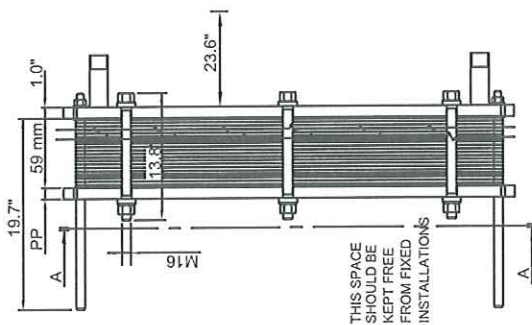
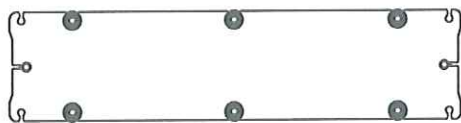


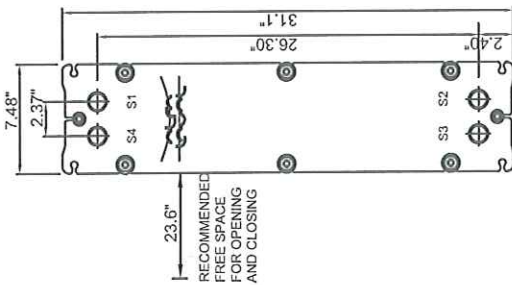
Designed constructed and stamped in accordance with 2010 ASME Code and latest Addendum. This is a general drawing. Additional parts, if required, like protection sheets, inspection covers, etc. are not displayed.

PRESSURE PLATE
(MOVABLE)

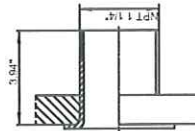
SECTION A-A
PP = 0.98"



FRAME PLATE
(FIXED)



ASME
PIPE
SS
S1, S2, S3, S4



REMARKS:	SIDE 1	SIDE 2
DESIGN PRESSURE	150 psi	150 psi
TEST PRESSURE	195 psi	195 psi
MAX TEMPERATURE	320 °F	320 °F
MIN TEMPERATURE	32 °F	32 °F
MAWP	150 psi	150 psi
MDMT	-20 °F	

GASKET	EPDM CLIP-ON
PLATE MATERIAL	ALLOY 316
PLATE THICKNESS	0.50 mm
HEATING SURFACE	11.1 ft²
PLATE GROUPING	1* (2MH+6L)/1* (2ML+6L)
WEIGHT WITH WATER	171 lb
NETWEIGHT	162 lb

CERTIFIED
APPROVED FOR FABRICATION
BY CF DATE 07-13-2011

TOTAL LENGTH 23.8"
TOTAL WIDTH 7.5"
TOTAL HEIGHT 31.1"

REV.1:REVISED GASK. MAT., DES. TEMP., MARKED CERT.

ALL DIMENSIONS IN INCHES

SIDE	MEDIA	INLET	TEMP.	OUTLET	TEMP.	FLOW RATE	PRESSURE DROP	LIQUID VOL.
1	Xylose-Water1	S4	180.0 °F	S3	98.0 °F	2500 lb/h	0.2012 psi	0.06 ft³
2	Water	S2	80.0 °F	S1	90.0 °F	19350 lb/h	8.952 psi	0.06 ft³

SUPPLIER	REF.	ITEM NO.
	43507-20	HP-2110
AGENT / REF. / 774610		
CUSTOMER NAME / REF. NO. / University Of Florida / 1100113912		
SIGN.		RISK CATEGORY
CFN		N/A

PLATE HEAT EXCHANGER
TL3-PFG
ASME

SERIAL NUMBER 30113-89815	
DATE 2011-07-13	REV NO. 1

108628

