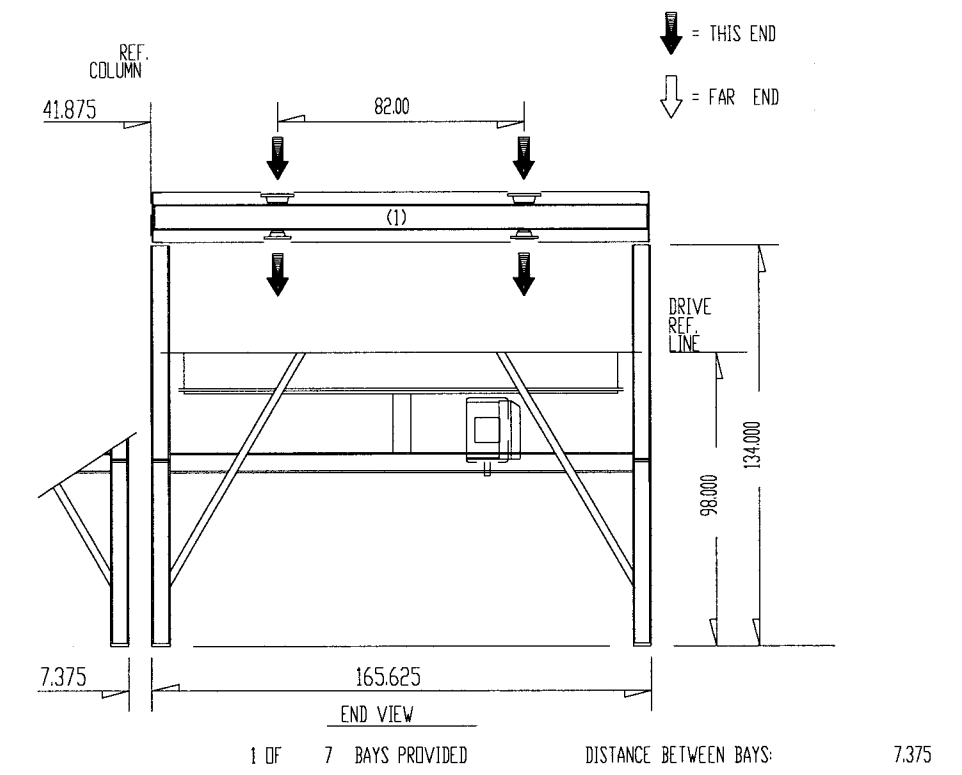
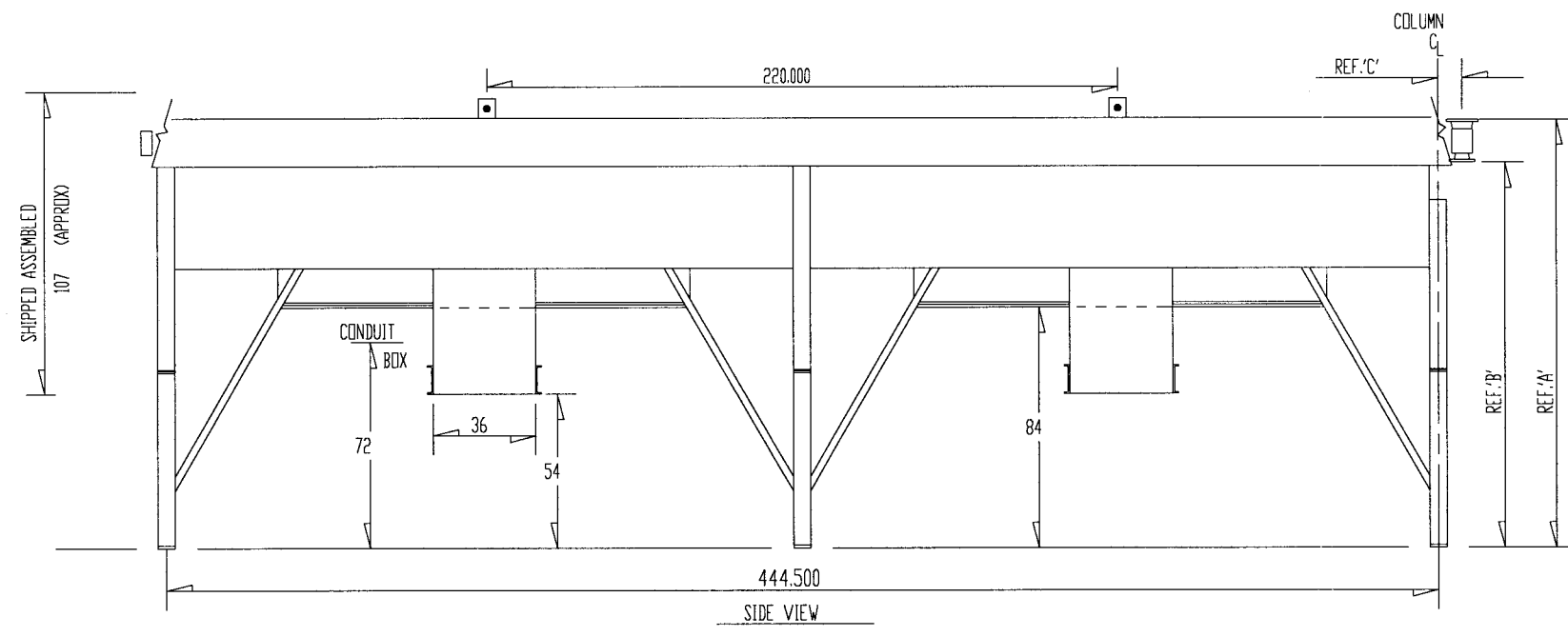
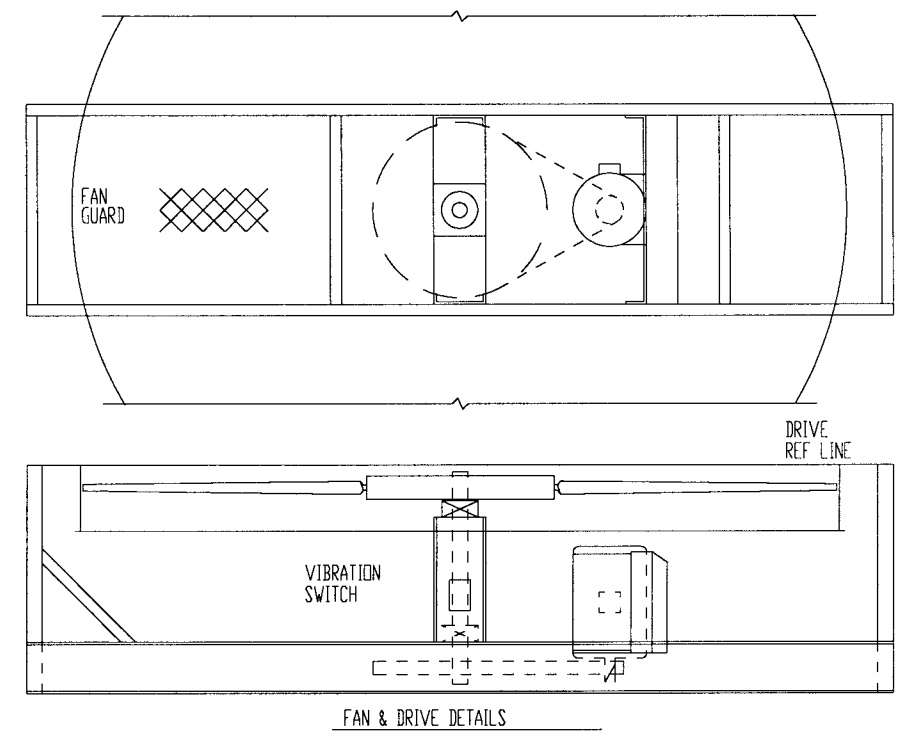
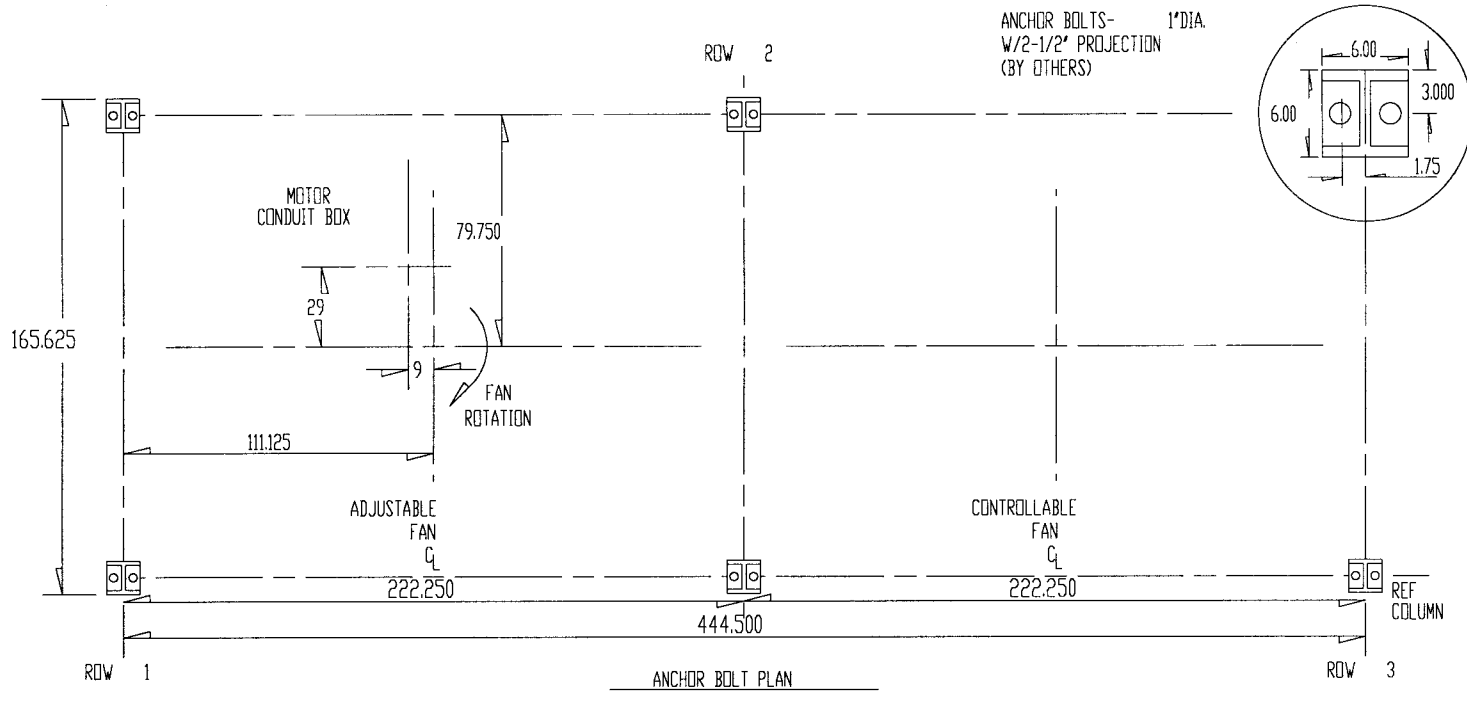


DRY WGT	31369	WIND	30.0	PSF /100	MPH	SEISMIC	4	PLATFORM	100	LBS/SQ-FT LIVE	
COLUMN LOAD (KIPS)	DRY DEAD	WET DEAD	WIND VERT	WIND HORIZ	SEIS VERT	SEIS HORIZ	SNOW	PLAT	NOZZ VERT	NOZZ HORIZ	TOTAL
ROW 1 /COLUMN	3.9	4.3	1.2	0.8	2.3	1.5	0.0	0.0	0.0	0.0	6.6
ROW 2 /COLUMN	7.8	8.6	2.3	1.5	3.1	3.0	0.0	0.0	0.0	0.0	11.7
ROW 3 /COLUMN	3.9	4.3	1.2	0.8	2.3	1.5	0.0	1.2	0.9	0.9	8.7

FAN 40 5000
 144 IN. DIAMETER 7 BLADE
 194000 ACFM 12.1 DEG.
 DRIVE REDUCER
 BELTS (8) 3VX-1250
 SHEAVES FAN 33.5 MOTOR 5.3
 BEARINGS 2.9375 IN.

MOTOR HP 30.0 RPM 1750. /O.
 286T TEFC VENT & DRAIN
 INSULATION CLASS F /B TEMP RISE
 460 /3/60 SINGLE WINDING VARIABLE TORQUE
 AMPS(+10%)FLA 36. LRA 218.
 VIBRATION SWITCH MURPHY VS-2EX
 VOLTS 480. AMPS 5.0 CONTACTS DPDT

SHOP RUN IN TEST



ITEM	SERVICE	NOZZLES INLET	OUTLET	REFERENCE DIMENSIONS				BUNDLE WEIGHT	COUPLINGS			SHUTTER-OPERATOR	HAIL SCR. CODE	DESIGN PRESS.	
				A	B	C	D		V&D	TEMP	PRESS				
1 E-216	IC4/NC4 VAP COND	(2) 6.00 - 150 # RF SCH XS	(2) 4.00 - 150 # RF SCH 160	151.375	136.000	8.375		18300	1.500" - FLG.			none	NO	NATL	150

3. CHANGED VENT & DRAIN PER CUSTOMER - JY - 11/20/95
 2. CHANGED VENT & DRAIN PER CUSTOMER - JY - 11/13/95
 1. CHANGE ELEVATION, NOZZLE SIZE PER CUSTOMER AND CERTIFIED DLM. 11 - 1 - 95

TOLERANCES: (ALL DIMENSIONS IN INCHES)
 MECHANICAL EQUIPMENT ± 1/8" PER 10' - 0"
 NOZZLE ± 1/8"

STRUCTURAL-
 WITH 1 SOLVENT CLEAN COAT GALVANIZE
 FRAME- WITH 1 SOLVENT CLEAN COAT GALVANIZE
 HEADER- WITH 1 WHITE METAL BLAST CLEAN COAT ZINC RICH PRIME

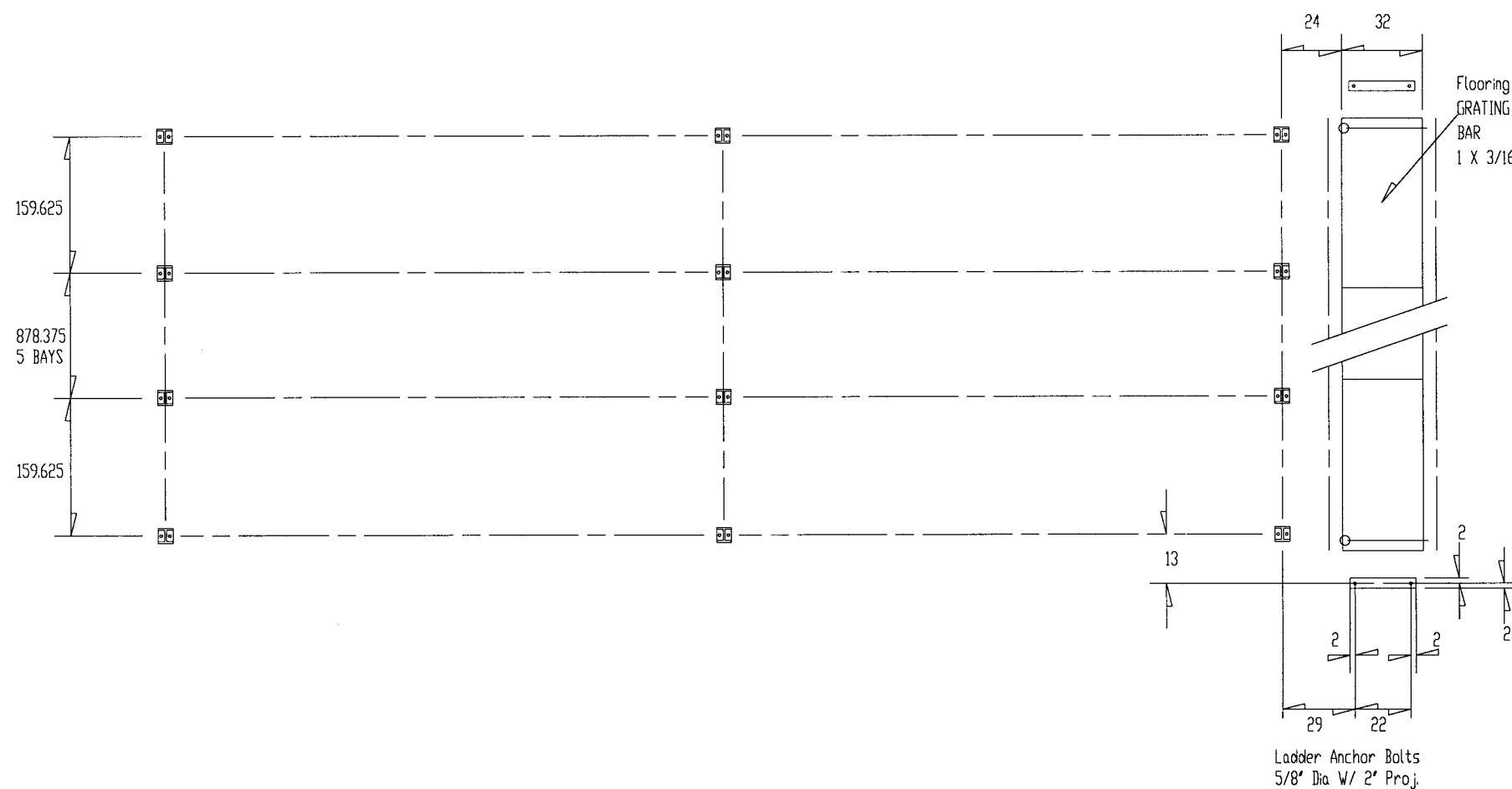
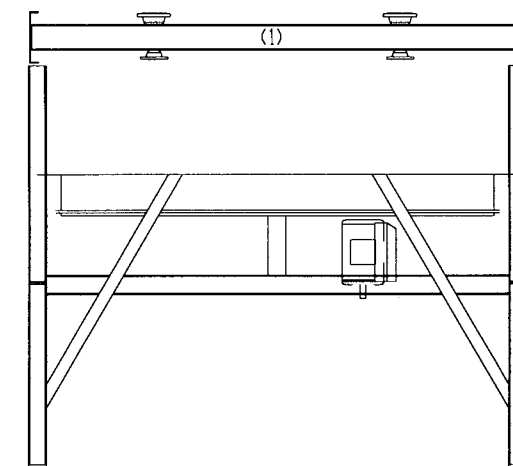
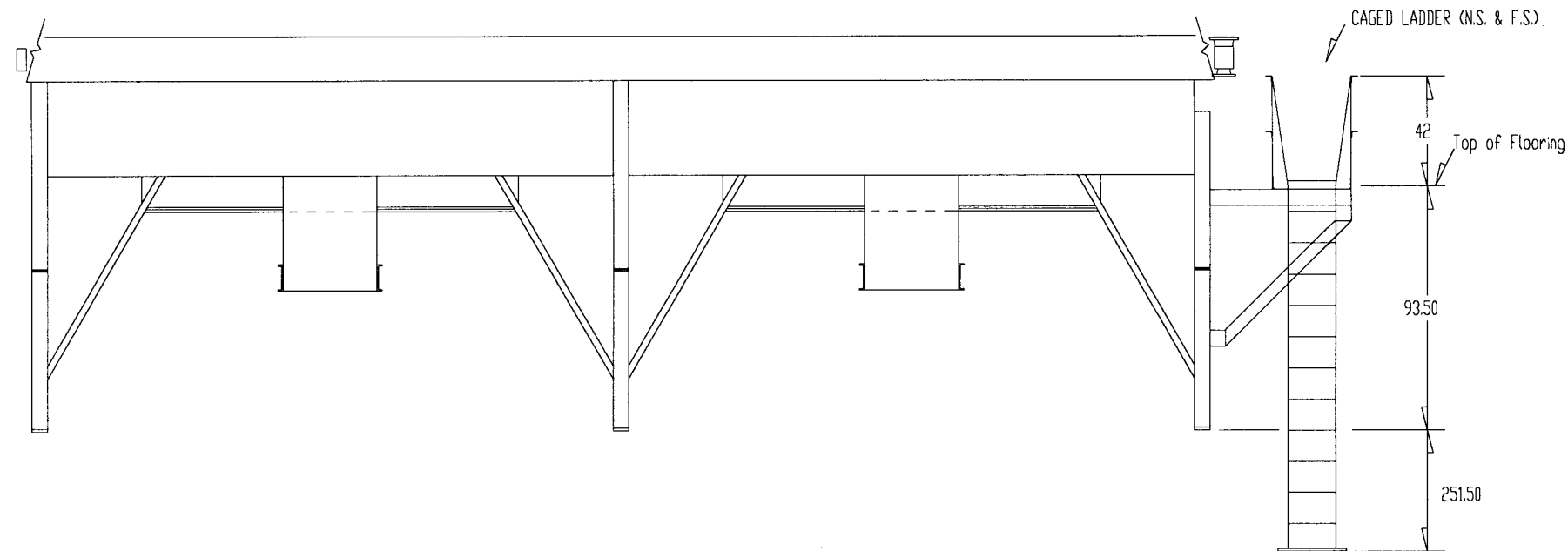
CUSTOMER LOCATION REFERENCE: PETROFAC INCORPORATED BAKERSFIELD, CA 25738-0673

CERTIFIED BY: *[Signature]* DATE: 11-20-95 REV: 3

SMITHCO AIR COOLED DIVISION TULSA, OKLAHOMA

PIPING, EQUIPMENT OUTLINE & ANCHOR BOLT PLAN MODEL 7 F 38 - 138 - 2 QUANTITY 1

DWN HP CKD KC / DLM DATE 10 - 31 - 1995
 JOB 95B 254 -A



TOLERANCES: (ALL DIMENSIONS IN INCHES)
 MECHANICAL EQUIPMENT ±1/8" PER 10' -0"
 NOZZLE ±1/8"
 STRUCTURAL- SOLVENT CLEAN
 WITH 1 COAT GALVANIZE
 FRAME- SOLVENT CLEAN
 WITH 1 COAT GALVANIZE
 HEADER- WHITE METAL BLAST CLEAN
 WITH 1 COAT ZINC RICH PRIME

CUSTOMER PETROFAC INCORPORATED
 LOCATION BAKERSFIELD, CA
 REFERENCE 25738-0673



WALKWAY OUTLINE & ANCHOR BOLT PLAN
 MODEL 7 F 38 -138 -2 QUANTITY 1

DWN	HP	CKD	KC / DLM	DATE	10 - 31 - 95
REV	1			JOB	95B 254 -W