

NOZZLE DATA									
NOZ	SIZE	OD	ID	LD	TL	TI	T	R	W
A	3"	3.50	3.26	5.0	.12	.375	.161	.375	.12
B	2"	2.37	2.157	3.62	.109	.313	.130	.312	.12
C	2"	2.37	2.157	3.62	.109	.313	.130	.312	.12
D	2"	2.37	2.157	3.62	.109	.313	.130	.312	.12
E	4"	4.50	4.26	6.18	.12	.437	.169	.437	.12
F	3"	3.50	3.26	5.0	.12	.375	.161	.375	.12
G	2"	2.37	2.068	3.62	.154	.375	.154	.312	.12

DESIGN CONDITIONS		
ASME CODE SECT. VIII DIV. I	19 ED.	ADDENDA
TEMA CLASS:	TYPE:	SIZE:
DATA	SHELLSIDE	SIDE
CONTENTS		
LETHAL SERVICE	<input type="checkbox"/> YES <input type="checkbox"/> NO	<input type="checkbox"/> YES <input type="checkbox"/> NO
DESIGN PRESSURE - INT.	14.5 PSIG	PSIG
DESIGN PRESSURE - EXT.	EV PSIG	PSIG
DESIGN TEMPERATURE - INT.	250 °F	°F
DESIGN TEMPERATURE - EXT.	100 °F	°F
HYDRO TEST PRESSURE	27 PSIG	PSIG
CORROSION ALLOWANCE	-	"
RADIOGRAPHY	FULL	
STRESS RELIEVE		
NO. OF PASSES		
SPECIFIC GRAVITY		
WIND MAP AREA		
SEISMIC ZONE		

MATERIALS OF CONSTRUCTION	
SHELL	SB-265-2
HEAD	SB-265-2
VESSEL FLANGES	-
NOZZLE NECKS	SB-337-2 WELDED
NOZZLE FLANGES	SA-105
REINFORCING PADS	-
HEAVY NOZZLE BASE	-
PRESSURE BOLTING	-
PRESSURE NUTS	-
GASKETS	-
COUPLINGS	SB-342-2
PLUGS	-
IMPINGEMENT PLATE	-
TUBES NO. SIZE	
TUBESHEETS	-
BAFFLE/TUBE SUPT. PL.	-
TIE RODS/SPACERS	-
VESSEL SUPT./REIN.	SB-265-2
EXPANSION JOINT	-
INTERNALS	-

NOZZLE DATA						
NO.	SIZE	QTY.	ANSI RATING	FACE	TYPE	SERVICE
A	3"	1	150#	RF	LJ	INLET
B	2"	1	150#	RF	LJ	DRAIN
C	2"	1	150#	RF	LJ	VENT
D	2"	1	150#	RF	LJ	PRESS. REL.
E	4"	1	150#	RF	LJ	SPARE
F	3"	1	150#	RF	LJ	LEVEL TRANS.
G	2"	1	150#	RF	LJ	PRESS. GAGE

TITANIUM INDUSTRIES  
CERTIFIED FINAL  
OCT 28 1987

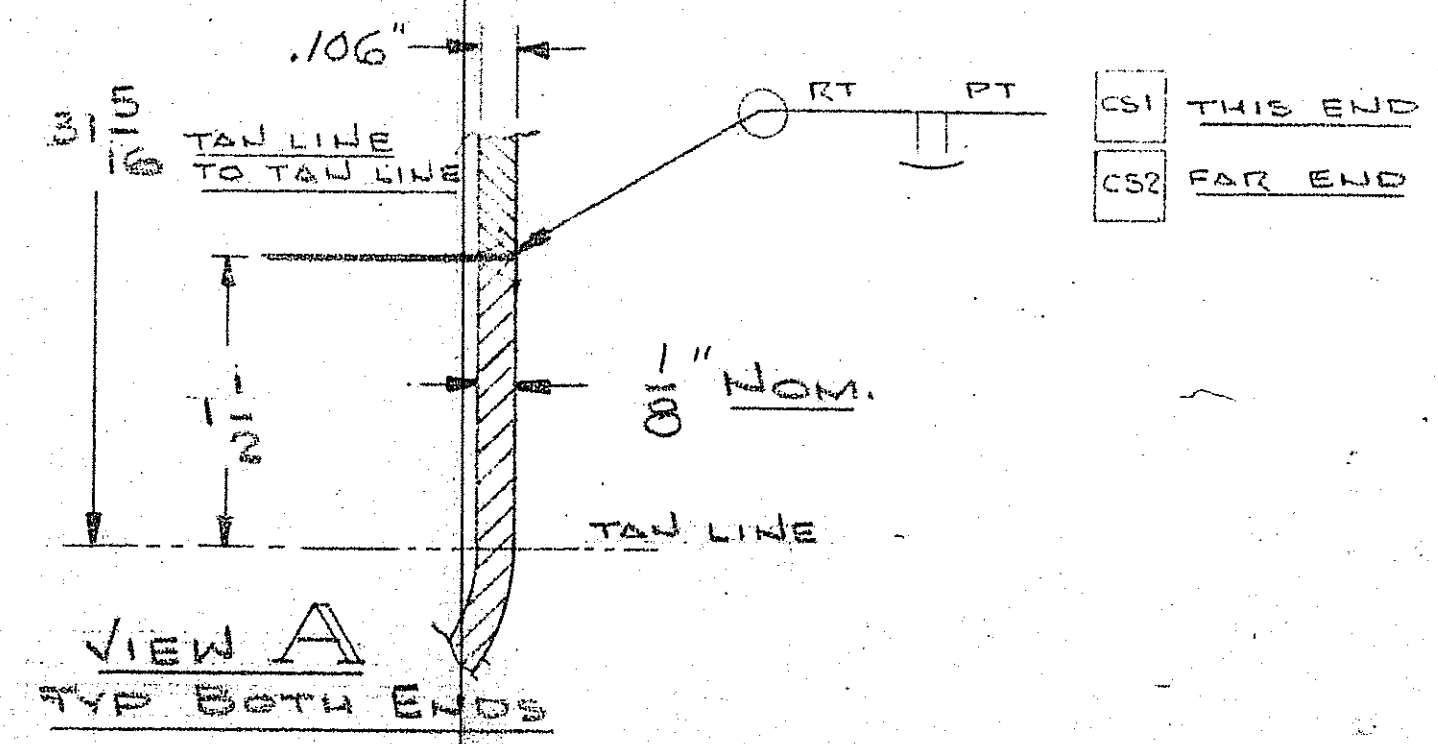
NATIONAL BOARD NO. 1  
TITANIUM INDUSTRIES  
SH. THK. 1/16 IN. TEMP. 250°F  
MAWP 14.5 PSIG  
SERIAL NO. 22998  
CUST. PO. NO. E376429B

TOLERANCE	
TOLERANCE, UNLESS NOTED OTHERWISE	FRACTIONAL DECIMAL
UNDER 12"	± 1/16"
12" TO 120"	± 1/8"
OVER 120"	± 1/4"
ANGULAR ± 1/2°	NOT TO EXCEED 1/16" PER 12"

WEIGHTS	
EMPTY	120 LBS
OPERATING	LBS
HYDRO TEST	470 LBS
SHIPPING	150 LBS

LEGEND	
○	NOZZLE NO.
□	WELD ID NO.
△	BILL OF MATERIAL NO.
△	REVISION NO.

- NOTES:  
1. REF. CUST. DWG. BCW-214-1899-V101  
2. BUILD TO ASME CODE - NO STAMP  
3. PAINTING: NONE (FLANGES AS REC'D)



REVISIONS	
NO.	DESCRIPTION
1	10/16/87
2	10/28/87

CUST. PO. NO. E376429B  
CUST. ITEM NO(S). 22998000  
NO. UNITS REQ'D. ONE  
T.I. IND. SERIAL NO(S). 22998

TITANIUM INDUSTRIES  
FAIRFIELD NEW JERSEY

TITLE SURGE TANK (30 GAL)  
CUSTOMER HOFFMANN-LE ROUGE (BELVIDERE, N.J.)

DRAWN BY J2  
SCALE 1/8" = 1"  
DATE 10/16/87  
CHECKED BY 207

SHEET 1 OF 1  
DWS. NO. D22998-00000