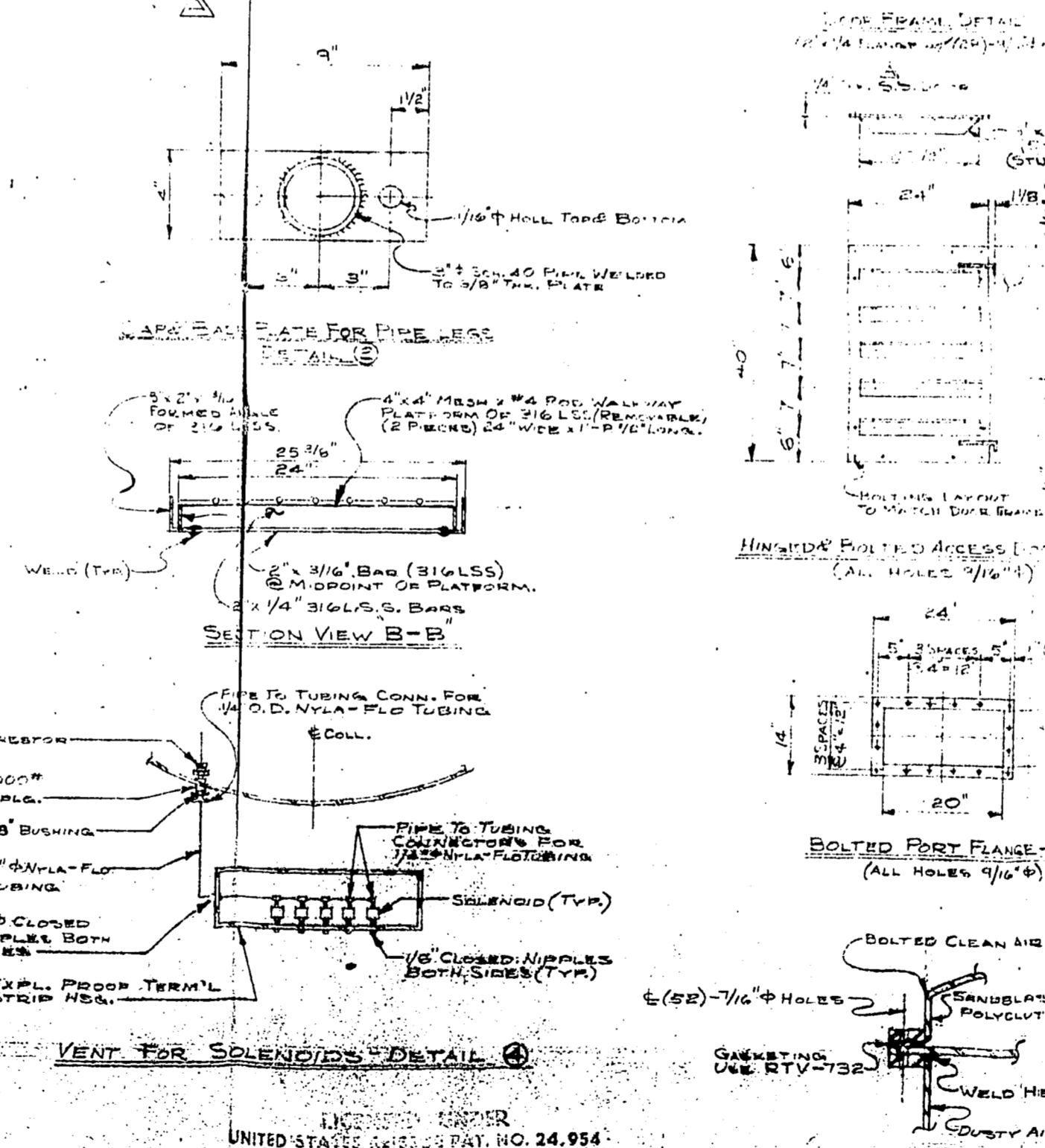
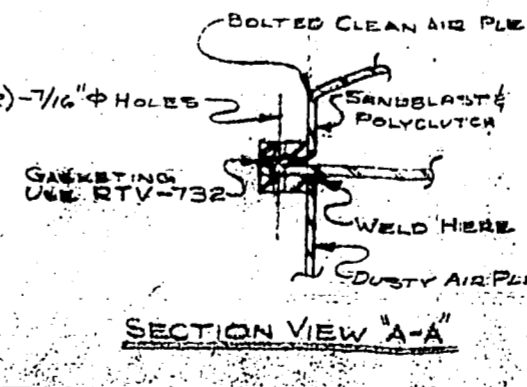
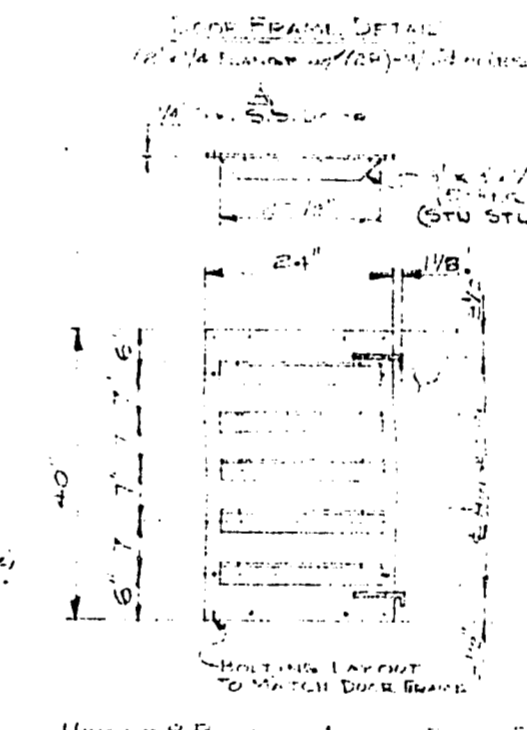
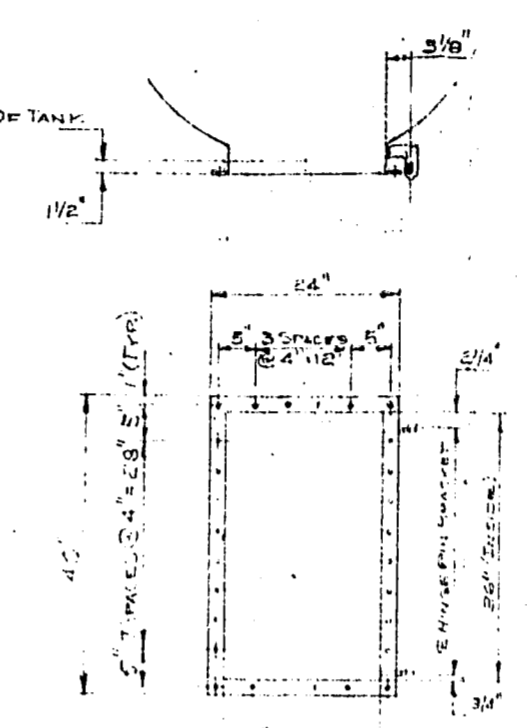


**CERTIFIED**  
 FOR CONSTRUCTION  
 FLEX-KLEEN CORPORATION  
 BY Robert J. Zielinski



LICENSEE UNDER UNITED STATES PATENT NO. 24,954 & CANADIAN PATENT NO. 649,113



OPERATING DATA		UNIT SPECIFICATIONS	
MARK	REVISION	DATE	BY
DUST CUSTOMER SPECIFY		DUST LOADING SPECIFY PERCU. FT.	
DUST DENSITY SPECIFY PER CU. FT. (MAXIMUM)		TEMPERATURE SPECIFY	
TEMPERATURE SPECIFY		COLLECTOR TEMPERATURE MUST BE KEPT WELL ABOVE DEW POINT	
END USE CUSTOMER SPECIFY			
LOCATION INDOOR		OPERATION	
WEIGHT 1800 LBS.		DESIGN PRESSURE 17" Hg.	
COMPRESSED AIR REQUIRE 7.0 SCFM @ 80-100 PSIG		CLEAN AIR	
EQUIPMENT DATA		CONSTRUCTION DATA	
TUBING 1/2" O.D. x 1/8" THK. 316 L.S.S.		CLEAN AIR PLENUM 10 GA. M.S. 20" I.D. x 4" B.S. SHED HRAO	
DIAPHRAGM VALVES B3C2-C3 (316)		DUSTY AIR PLENUM 10 GA. M.S. 20" I.D. x 4" B.S. SHED HRAO	
SOLENOID VALVES B3C2-C2 (FW)		TUBING SHEET PILE 316 L.S.S. (EXT. FILLS COATED 3/16" W.G.)	
VENTURIS VGC ALUM.		DOORS (2) 10 GA. 316 L.S.S.	
FILTER RING 1/8" O.D. x 1/8" THK. 316 L.S.S.		BRASS ON S.S. SHELL AS SHOWN	
GENERAL NOTES			
UNIT OPERATED UNDER NEGATIVE PRESSURE			
WELD TO BE FULL PENETRATION BUT NOT TO EXCEED 1/8"			
ALL SURFACES TO BE SMOOTH AND CLEAN			
ALL INTERIOR SURFACES TO BE SMOOTH AND CLEAN			
ALL EXTERIOR SURFACES TO HAVE (1) ONE PRIME COAT OF PRIMER AND (2) FINISH COAT OF PAINT			
ALL INTERIOR CORNERS OF DUSTY AIR PLENUM TO HAVE MINIMUM 1/4" RADIUS FILLETS			
ALL DUST CONTACT SURFACES TO BE SMOOTH TO SALESABLE STEEL SHELLS TO BE SMOOTH AND CLEAN			
ALL INTERIOR SURFACES OF CLEAN AIR PLENUM TO BE SANDBLASTED (S.P.-6) AND COATED WITH PITTSBURGH ORIGINAL POLYCOLON (WHITE UC-41500, BLUE UC-41501)			
BISHOP NOTES			
B.P. TO PROVIDE NAMEPLATE			
B.P. TO PROVIDE PRESSURE DIFF. SWITCH			
*** UNIT SIZED BY CUSTOMER			
ONE (1) UNIT REQ'D.			
MARKING: MCKEE & CO.			
P/O # 2727-42-7313			
10 GA. M.S.			
I.P.S. # 2011-K			
POSITION # B3-6999			
REFERENCE DRAWING: B-71-M-131 Explosion Vent Flange Details			
DATE: 11-17-72			
BY: [Signature]			
<b>FLEX-KLEEN CORPORATION</b> SUBSIDIARY OF RESEARCH-COTRELL, INC. 407 S. DEARBORN ST., CHICAGO, ILLINOIS 60606			
SCALE: 3/4" = 1'-0" (DRAWING) 1/4" = 1'-0" (PNEUMATIC)			
DATE: 9-22-71			
DRAWN BY: [Signature]			
CHECKED BY: [Signature]			
MODEL: B3-6999			