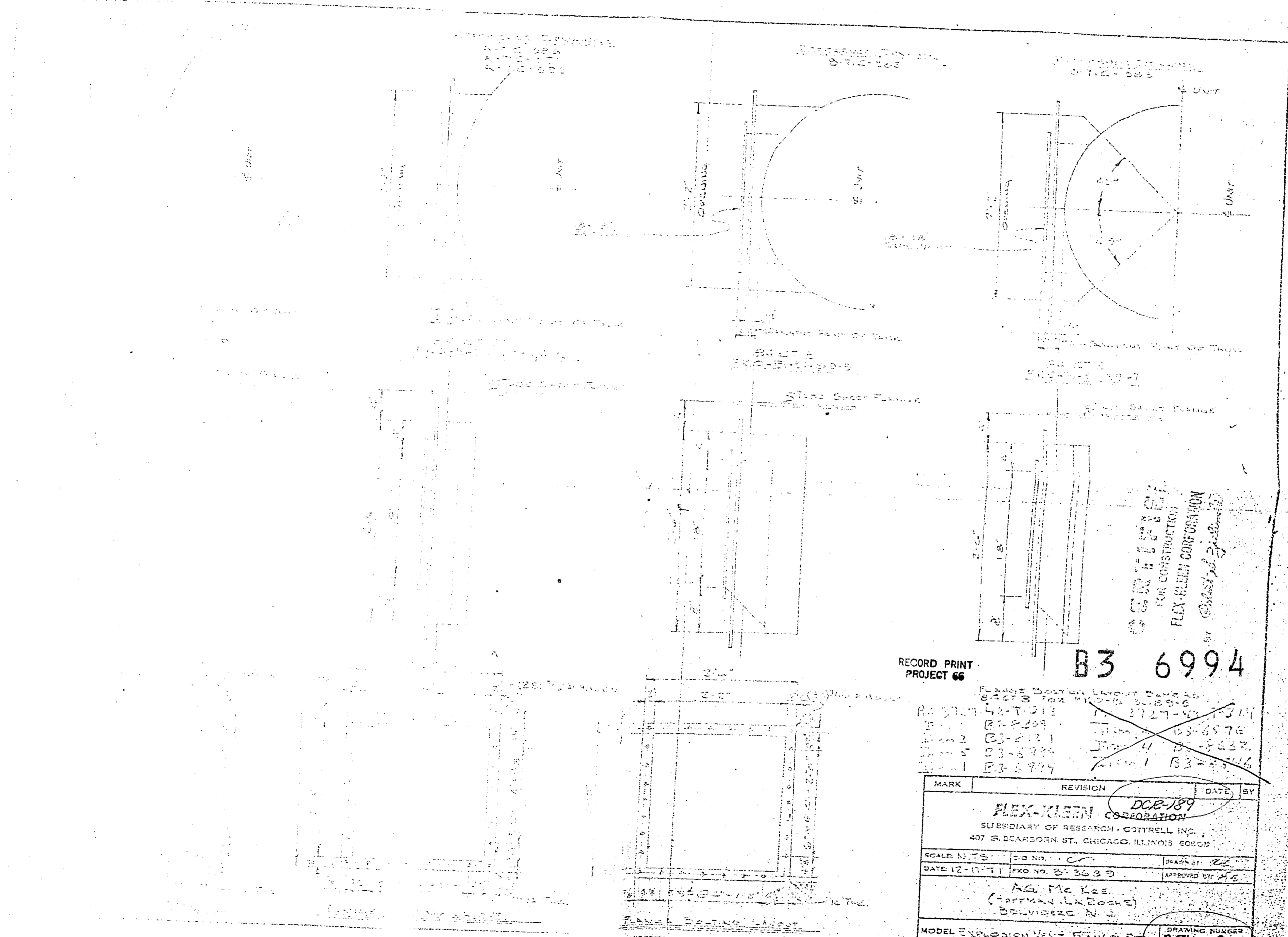


CERTIFIED
 FOR CONSTRUCTION
 FLEX-KLEEN CORPORATION
 BY Robert J. Zielinski

MARK	REVISION	DATE	BY
1	ASSEMBLY VENT CLEARANCE	7/27/51	WJM
2	ADD DETAIL OF VIBRATION PAD	11/10/51	WJM
3	ADD DETAIL OF SADDLE SUPPORT	11/10/51	WJM
4	ADD DETAIL OF INLET FLANGE	11/10/51	WJM
5	ADD DETAIL OF BOLTED PORT FLANGE	11/10/51	WJM
6	ADD DETAIL OF CLEAN AIR PLENUM	11/10/51	WJM
7	ADD DETAIL OF CAP BASE PLATE	11/10/51	WJM
8	ADD DETAIL OF DOOR FRAME	11/10/51	WJM
9	ADD DETAIL OF HINGED BOLTED ACCESS DOOR	11/10/51	WJM
10	ADD DETAIL OF SECTION VIEW A-A	11/10/51	WJM
11	ADD DETAIL OF SECTION VIEW B-B	11/10/51	WJM
12	ADD DETAIL OF SECTION VIEW C-C	11/10/51	WJM
13	ADD DETAIL OF CAP BASE PLATE FOR PIPE LEG	11/10/51	WJM
14	ADD DETAIL OF DOOR FRAME DETAIL	11/10/51	WJM
15	ADD DETAIL OF HINGED BOLTED ACCESS DOOR DETAIL	11/10/51	WJM
16	ADD DETAIL OF BOLTED PORT FLANGE DETAIL	11/10/51	WJM
17	ADD DETAIL OF BOLTED CLEAN AIR PLENUM	11/10/51	WJM
18	ADD DETAIL OF SECTION VIEW A-A	11/10/51	WJM
19	ADD DETAIL OF SECTION VIEW B-B	11/10/51	WJM
20	ADD DETAIL OF SECTION VIEW C-C	11/10/51	WJM

FLEX-KLEEN CORPORATION
 SUBSIDIARY OF RESEARCH CORPORATION
 407 E. BROADWAY ST. CHICAGO, ILL. 60601
 SCALE: 1/4" = 1'-0" (SEE DRAWING FOR DIMENSIONS)
 DATE: 7-27-51
 MODEL: B-71 M-431



RECORD PRINT
PROJECT 66

B3 6994

MARK	REVISION	DATE	BY
1	B3-6994	12-17-71	MS
2	B3-6994	12-17-71	MS
3	B3-6994	12-17-71	MS
4	B3-6994	12-17-71	MS

FLEX-KLEEN CORPORATION SUBSIDIARY OF RESEARCH-COTTRELL INC. 407 S. DEARBORN ST. CHICAGO, ILLINOIS 60608		
SCALE: N.T.S.	CO. NO. 2333	DESK AT 22
DATE: 12-17-71	FXO NO. B3-6994	APPROVED BY: MS
AG. Mc Kee (OFFICER IN CHARGE) BELVIDERE, N.J.		
MODEL EXPLOSION VENT. RANGE D.		DRAWING NUMBER B-71M-131

CONTINUOUS, INT'L GROUND TO 20 GRIT FINISH & EXT'L TO BE GROUND SMOOTH. INTERNAL MG. SURFACES OF CLEAN AIR PLENUMS EXCLUDING TUBE SHEET TO BE SANDBLASTED (20-30) AND COATED WITH PINTS BURGHE ORIGINAL POLYCLUTCH (1ST COAT: WHITE UC-41300, 2ND COAT: BLUE UC-41301) & NO CARBON STEEL TO BE WELDED DIRECTLY TO STAINLESS STEEL SHELL.

ADDITIONAL GENERAL NOTES:

*** UNIT ORDERED BY CUSTOMER.

AIR - DETAIL 1

ONE (1) UNIT REQ'D.

MARK A. G. MCKEE & CO.
 P.O. # 3727-42-T313
 M-1313
 P.O. # 2075-H
 POSITION # B3-6994

FLEX-KLEEN CORPORATION

REFERENCE DRAWING: B-71M-131
 RECORD PRINT
 PROJECT 66
 EXPLOSION VENT
 FLANGE, DETAILS

B3 6994

DETAIL 3

(B)	ADDED: LOCATION OF VIBRATOR PAD & INDICATOR OPNS. (ORIENTATION, VIEW)	1-10-72	12/72
(A)	ADDED: ORIENTATION VIEW: ENGLV & DETAIL (A) SHOW NOTE (A) EXPL. VENT FLG. 3" INLET & 4" INLET, FRINGED; MAT'L DISCH. FLG., LEG CLAMPING; DPLG. CONV.; ACCESS DOOR; MAT'L & BAR STIFFENER MAT'L	12-16-71	12/72

MARK	REVISION	DATE	BY
------	----------	------	----

FLEX-KLEEN CORPORATION

SUBSIDIARY OF RESEARCH-COTTRILL INC.
 407 S. DEARBORN ST., CHICAGO, ILLINOIS 60605

SCALE: 3/4"=1'-0"	DWG NO. 3727-42-T313	DRAWN BY: S.M.T.
DATE: 9-7-71	PKO NO. B-3089-G	APPROVED BY: [Signature]

A. G. MCKEE
 (CHOFFMAN LAROCHE)
 BELVIDERE, N. J.

MODEL: 84-CT-24	DRAWING NUMBER: A-10037
-----------------	-------------------------

PLENUM

STEEL

WELDED

AIR PLENUM SIG. L.S.

© 1970 FLEX-FLEEN CORPORATION
 FOR CONSTRUCTION
 CHICAGO, ILL.

93 6994

RECORD PRINT
 PROJECT 68

PLEASE DETAIL LAYOUT DETAILS
 SUBJECTS FOR PROJECTS

- PROJECT 42-7-313
- PROJECT 33-2-209
- PROJECT 33-2-217
- PROJECT 33-6-294
- PROJECT 33-6-294

MARK	REVISION	DATE BY
		DCR-184
FLEX-FLEEN CORPORATION SUBSIDIARY OF RESEARCH - CONTROL INC. 407 S. DEARBORN ST. CHICAGO, ILLINOIS 60606		
SCALE N.T.S.	CD NO. 1	DATE 12-17-71
		PROJ. NO. 3-33-2-9
RESEARCH - CONTROL (CORPORATION)		
DRAWING NO. 93-6994-131		
MODEL EXPLORATION MEET. FRAMES. PART 1		

DRAWING NUMBER
 93-6994-131