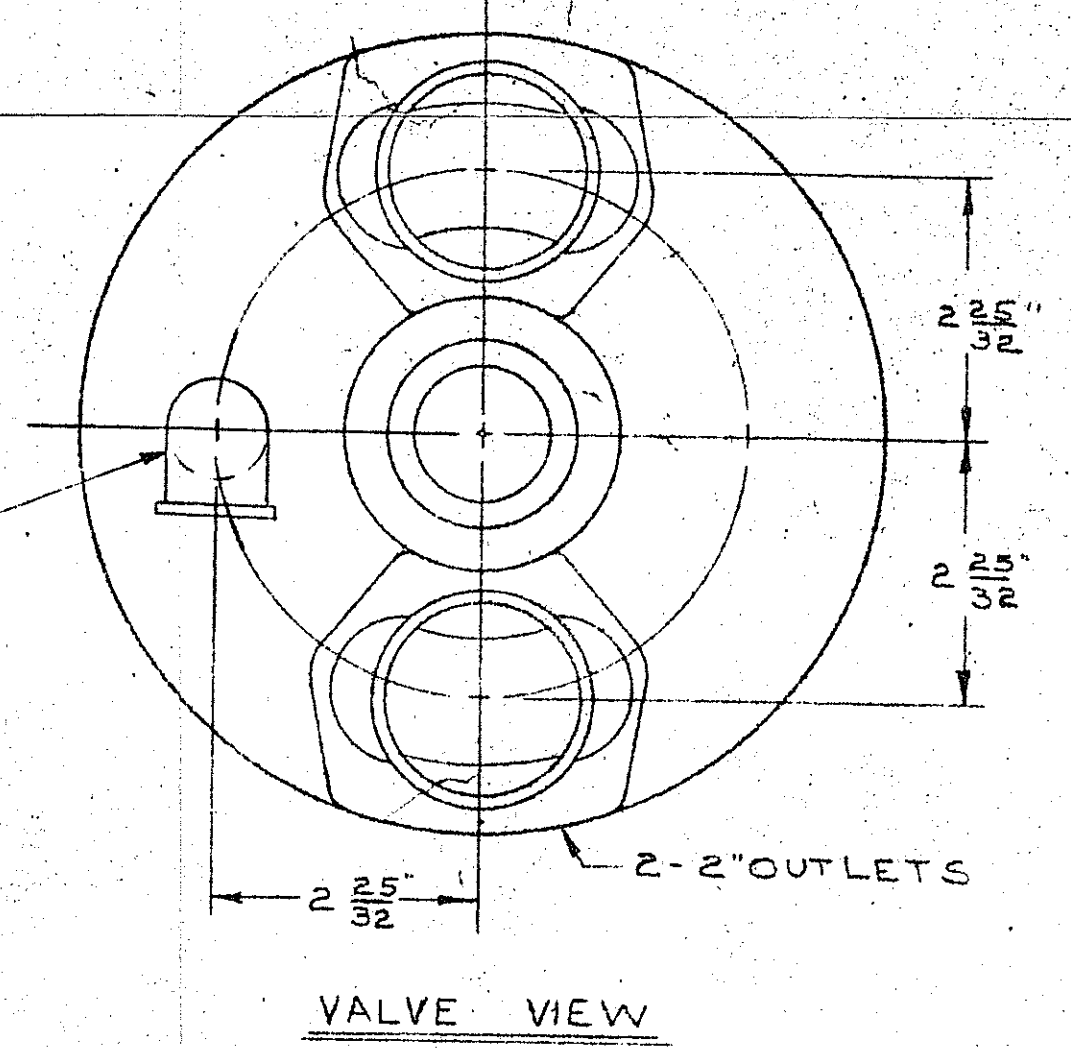
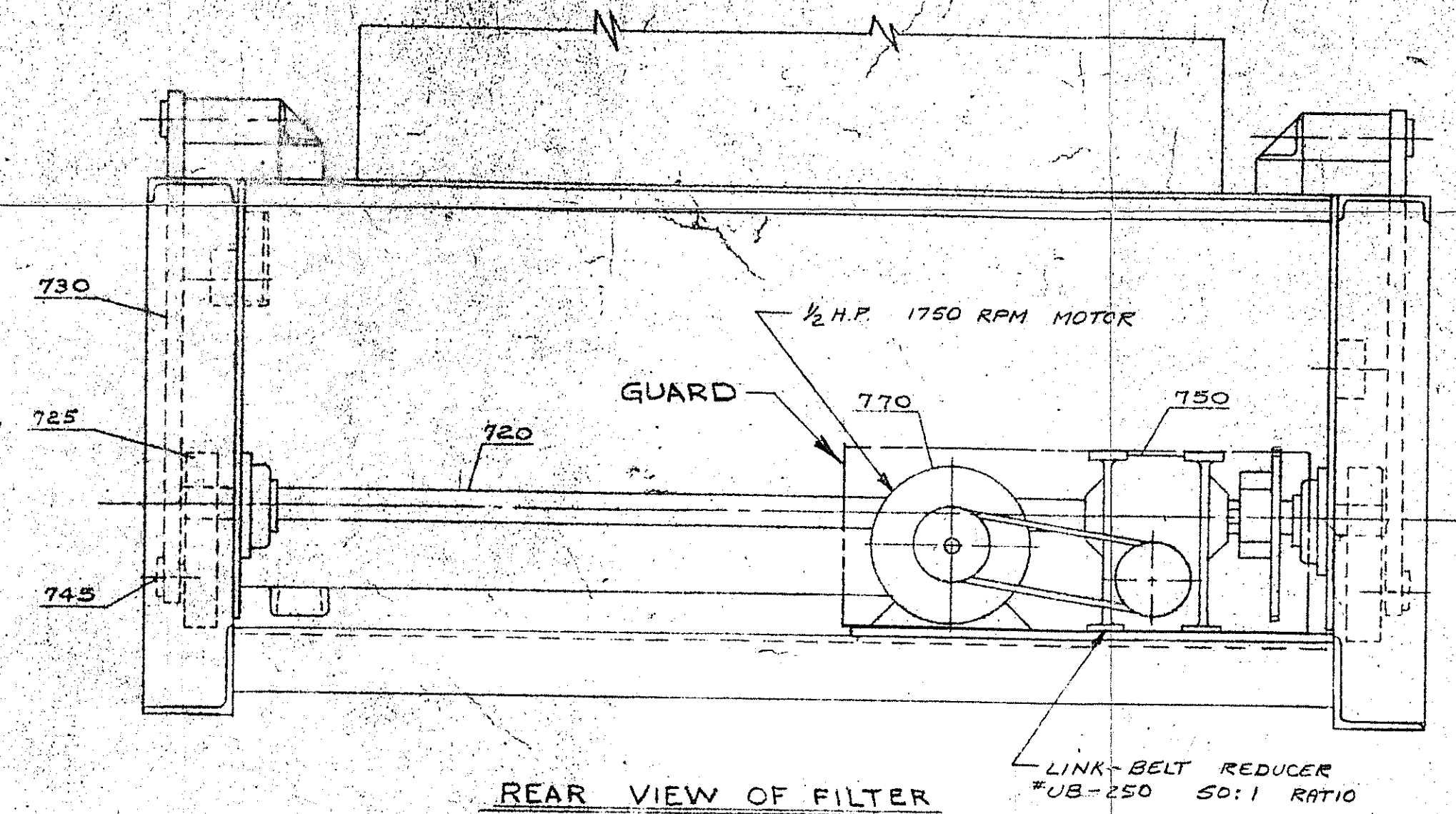
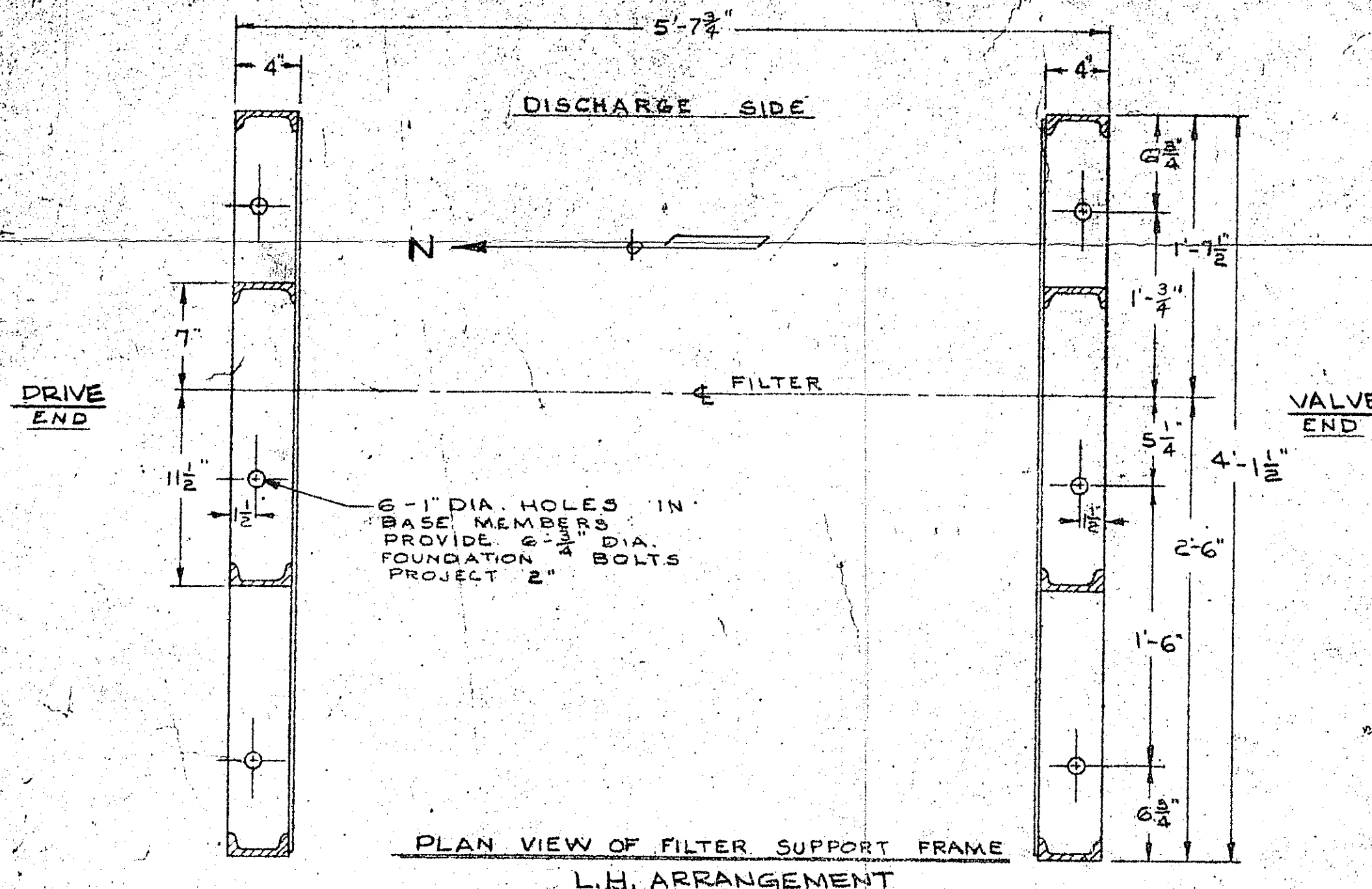
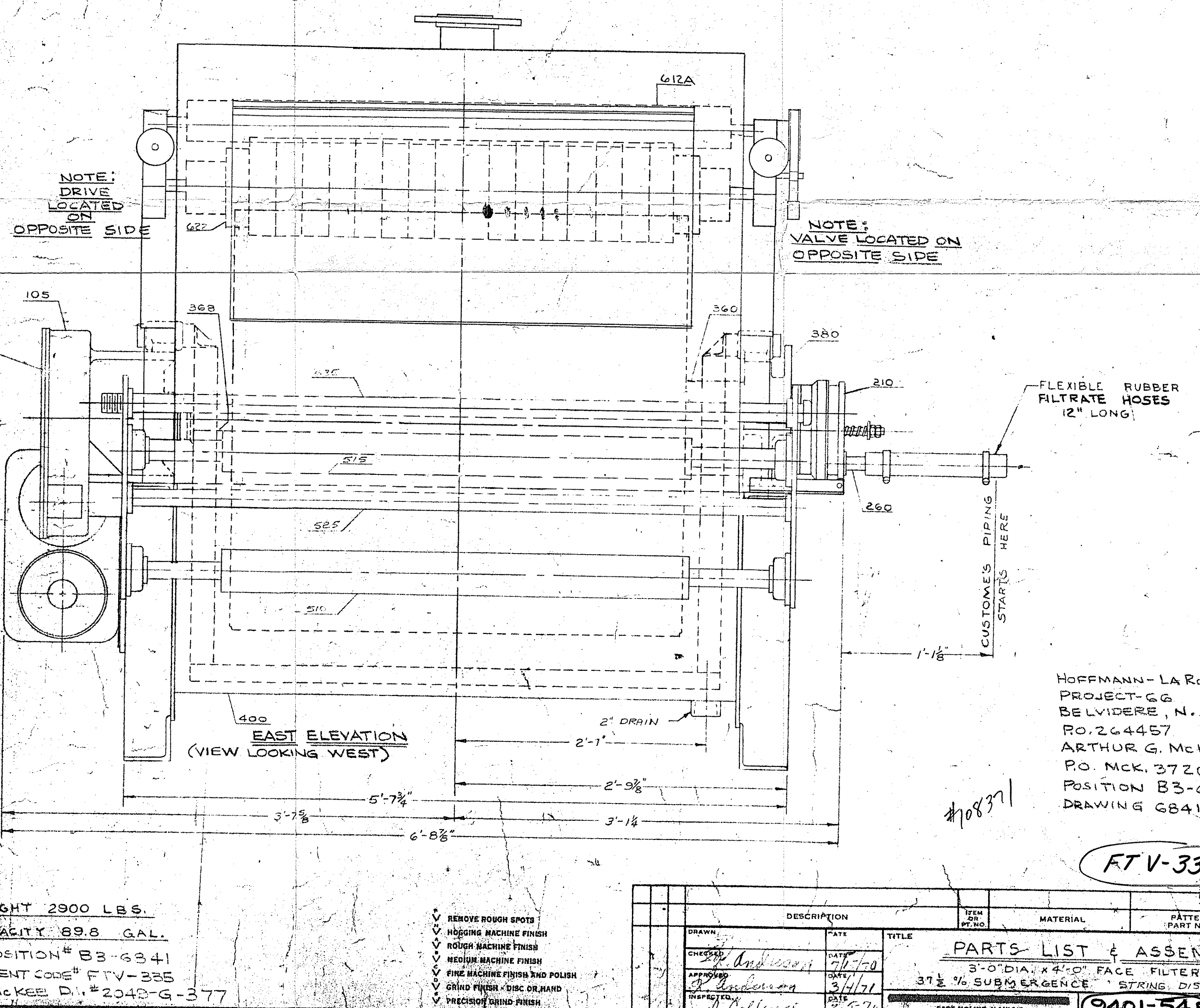
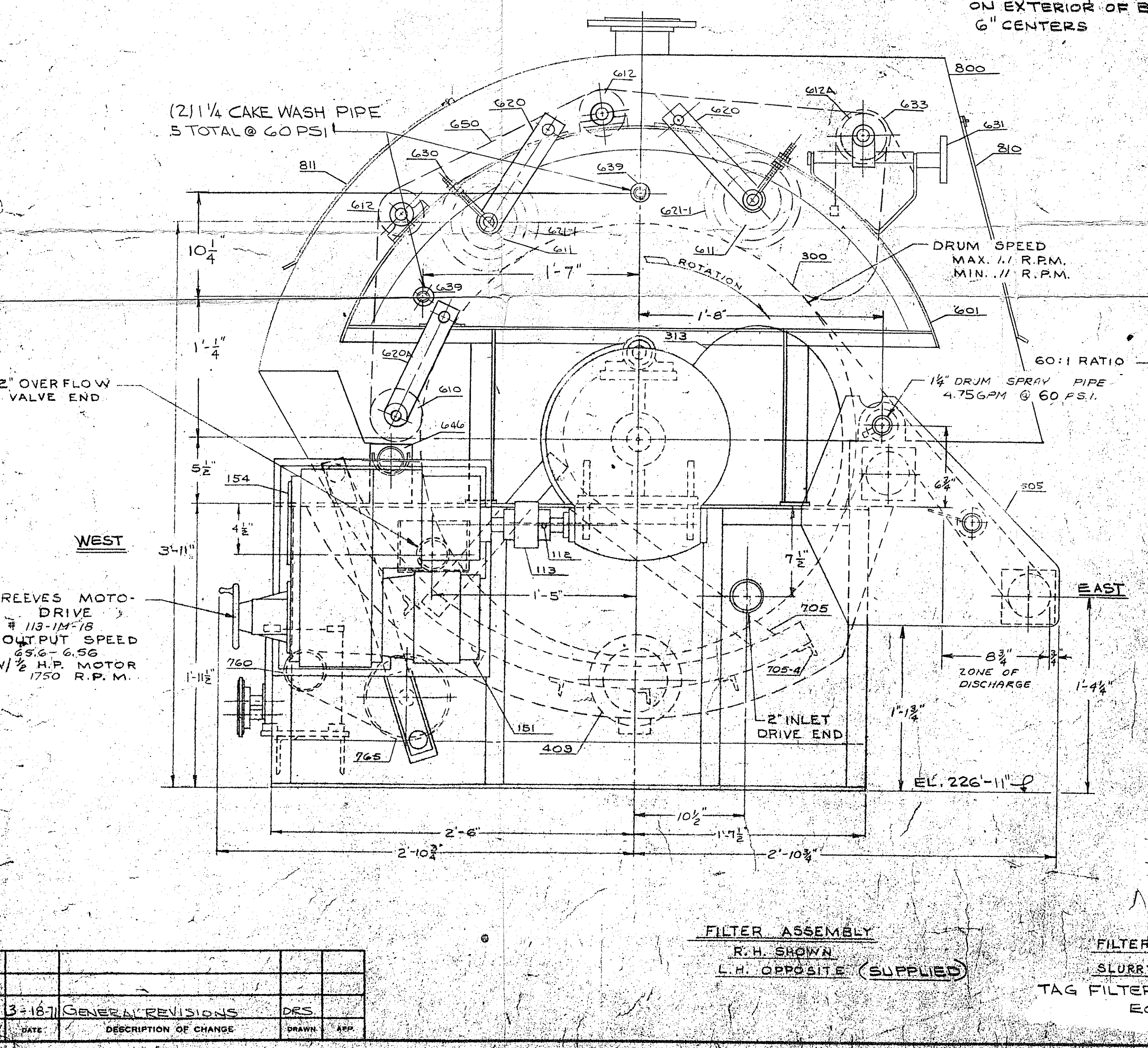


D

UNLESS OTHERWISE SPECIFIED FRACTIONAL DIMENSIONS HELD TO 1/64, DECIMAL DIMENSIONS HELD TO .005



INSULATION PINS ARE FURNISHED ON EXTERIOR OF BASIN ON APPROX. 6" CENTERS



FILTER ASSEMBLY R.H. SHOWN L.H. OPPOSITE (SUPPLIED)

FILTER WEIGHT 2900 LBS. SLURRY CAPACITY 89.8 GAL. TAG FILTER: POSITION # B3-6341 EQUIPMENT CODE # FTV-335 MCKEE D. # 2042-G-377

- REMOVE ROUGH SPOTS
- HOBBS MACHINE FINISH
- ROUGH MACHINE FINISH
- MEDIUM MACHINE FINISH
- FINE MACHINE FINISH AND POLISH
- GRIND FINISH - DISC OR HAND
- PRECISION GRIND FINISH

DESCRIPTION	ITEM NO.	MATERIAL	PATTERN OR PART NUMBER
PARTS LIST & ASSEMBLY			
3'-0" DIA. X 4'-0" FACE FILTER			
37 1/2 % SUBMERGENCE STRING DISCHARGE			
EAST MOLINE, ILLINOIS			

DATE: 3/1/71

DATE: 3-5-71

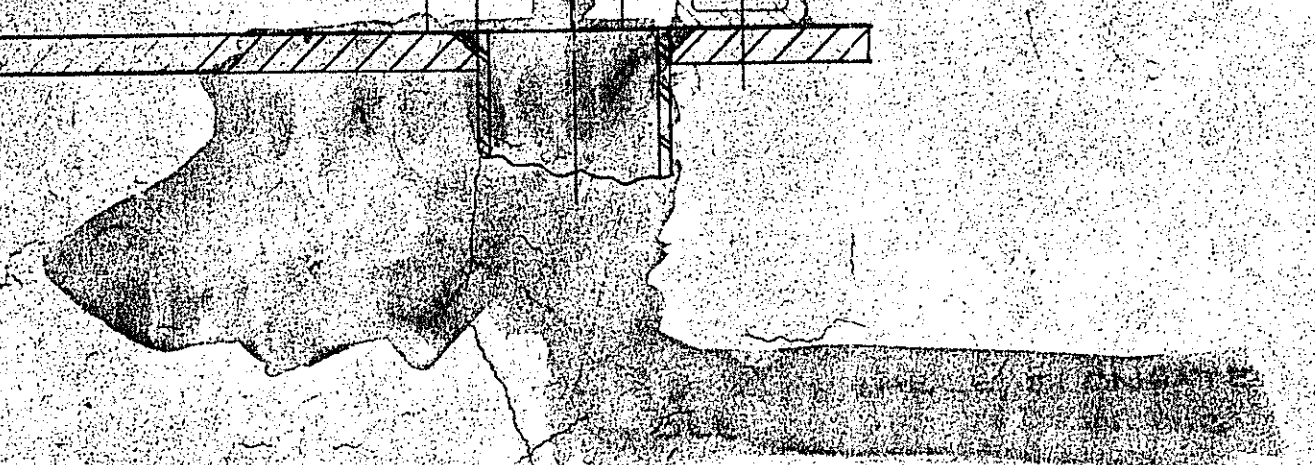
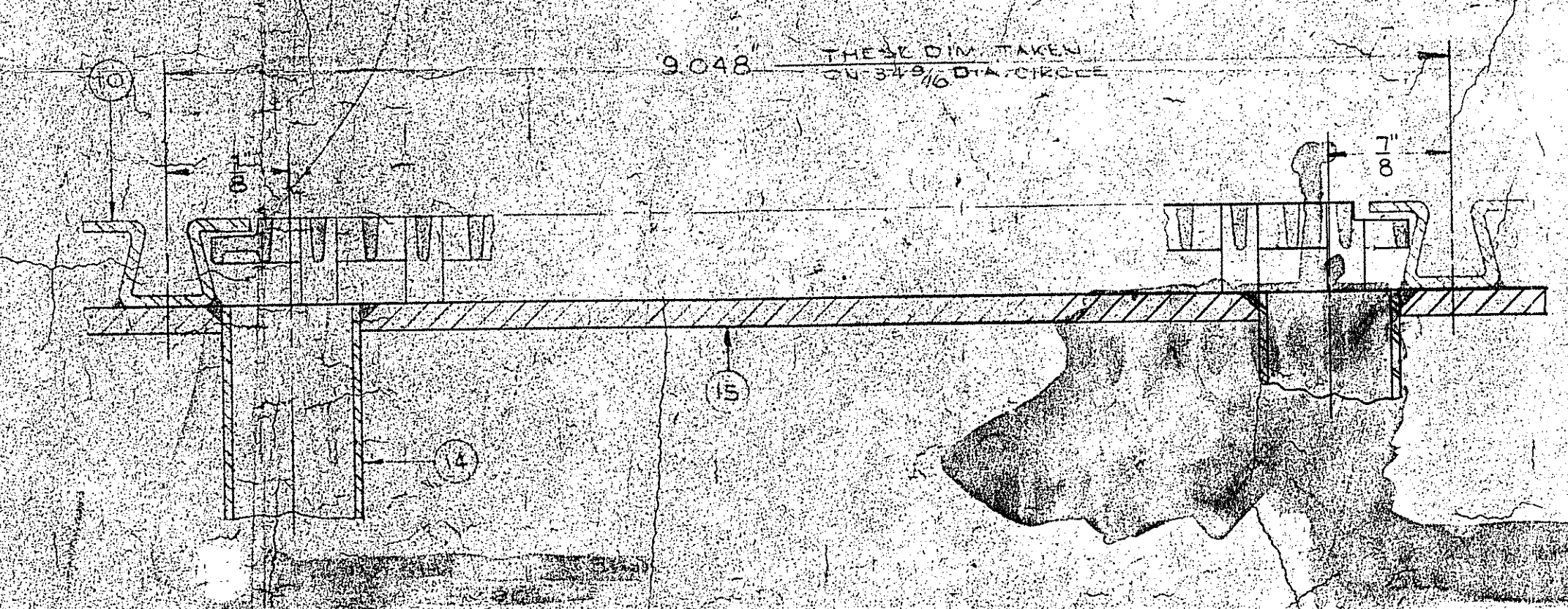
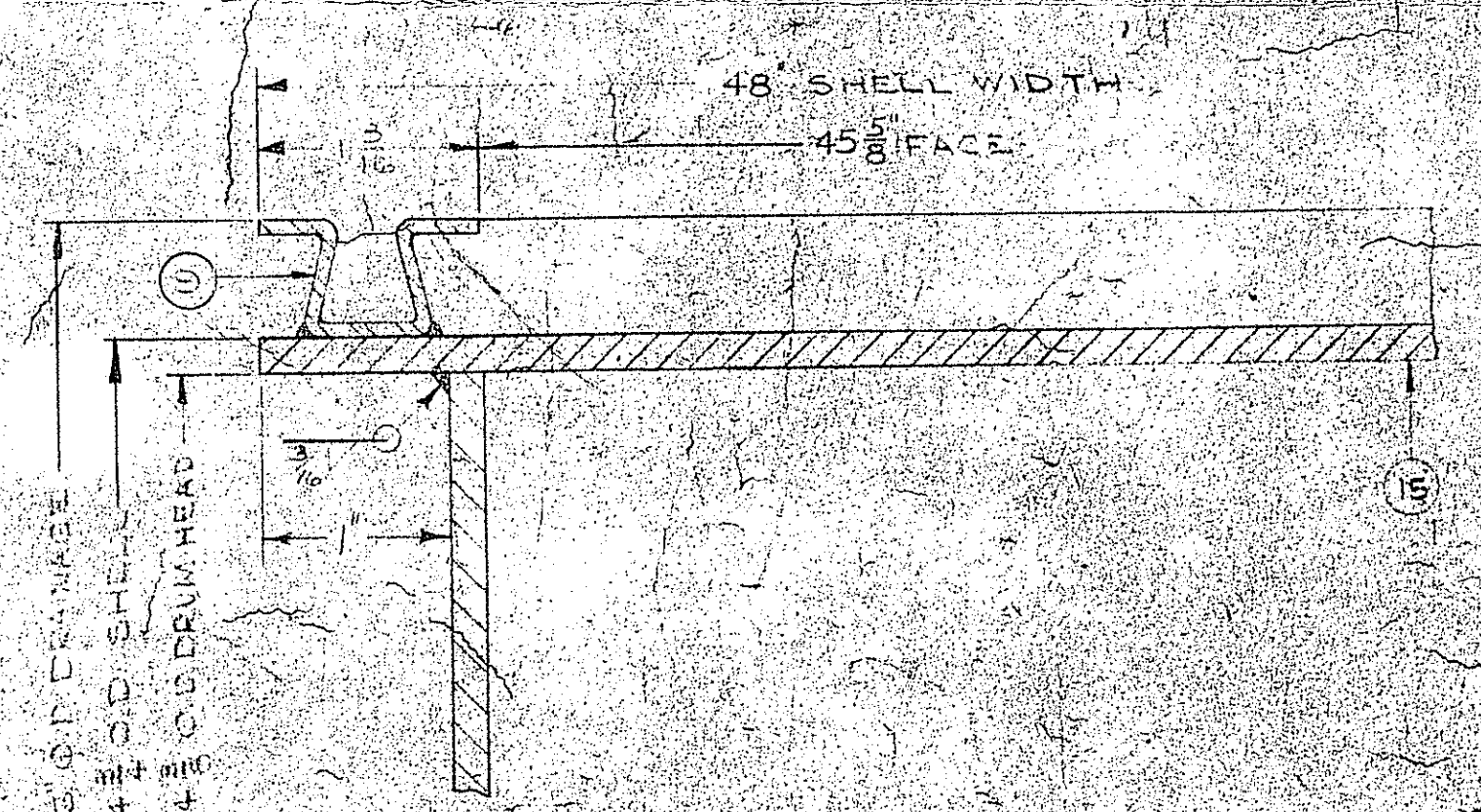
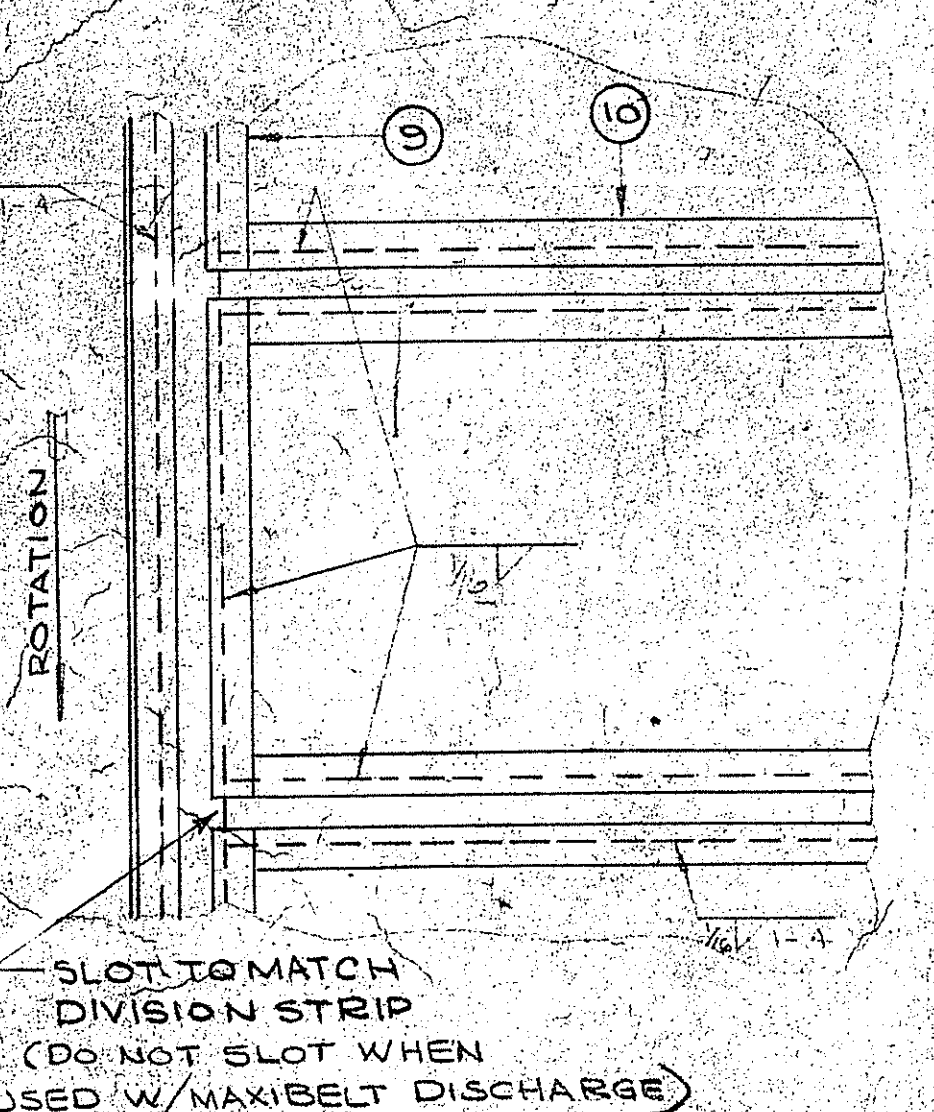
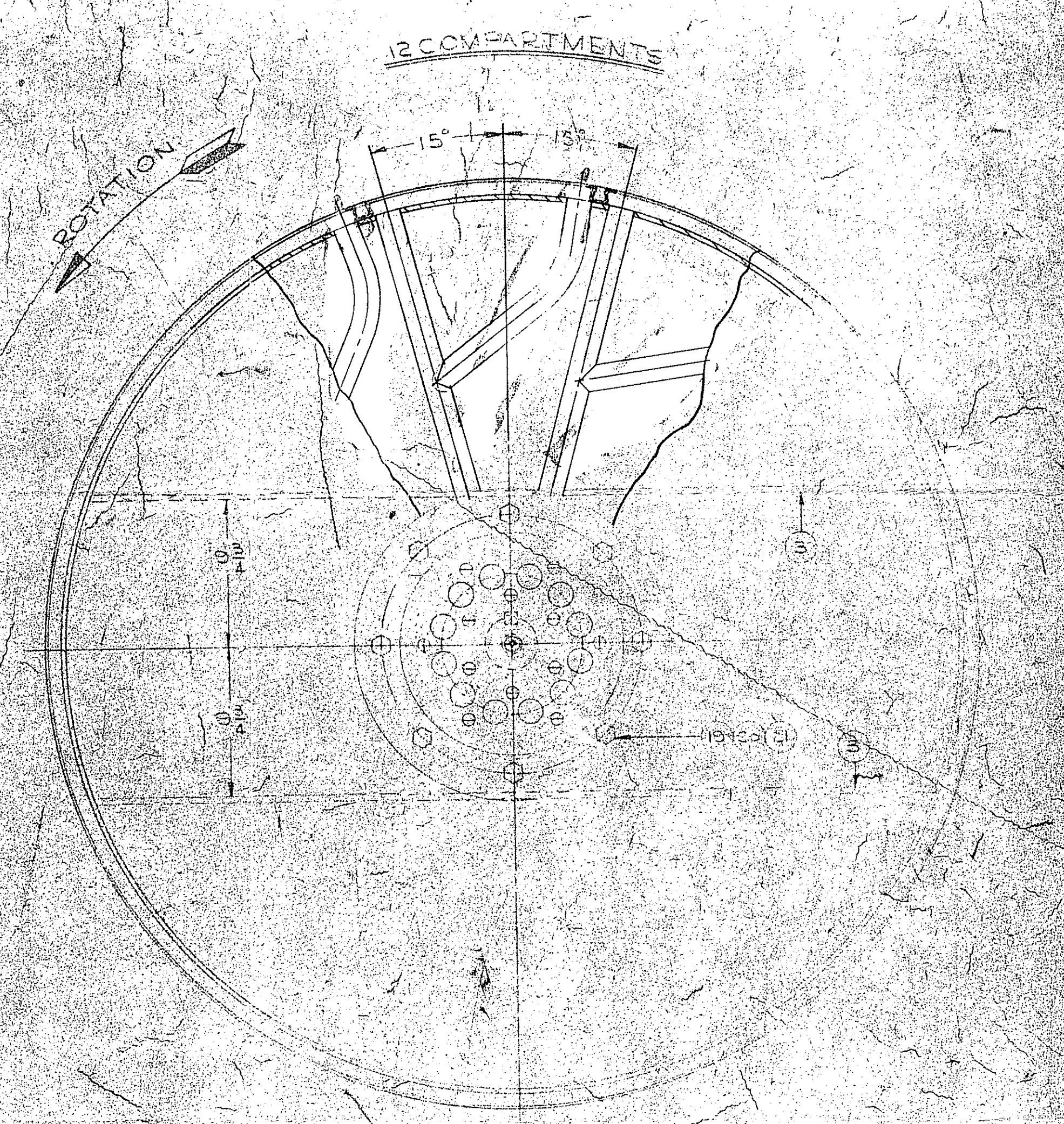
9401-549 D

HOFFMANN - LA ROCHE
PROJECT-66
BELVIDERE, N. J.
RO. 264457
ARTHUR G. MCKEE
P.O. MCK. 3726-17
POSITION B3-6341
DRAWING 6841-1

FTV-335

NO.	DATE	DESCRIPTION OF CHANGE	DRAWN	APP.
13-167		GENERAL REVISIONS	DRS	

UNLESS OTHERWISE SPECIFIED, FRACTIONAL DIMENSIONS HELD TO 1/64" DECIMAL DIMENSIONS HELD TO ± .001



RETAIN THIS DWG FOR OUR FILES

NO.	DATE	DESCRIPTION OF CHANGE	DRAWN	APP.
3	3-23-71	REVISED END SEAL STRAP SLOT	R.E.	
4	1-25-75	REMOVED NOTE IN SECTION A-A	RKW	
5	2-2-76	1/2\"/>		

① SHOWN
② OPPOSITE

- ✓ REMOVE RAUGH SPOTS
- ✓ BROGUE MACHINE FINISH
- ✓ ROUGH MACHINE FINISH
- ✓ MEDIUM MACHINE FINISH
- ✓ FINE MACHINE FINISH AND POLISH
- ✓ GRIND FINISH - RICE OR HAND
- ✓ PRECISION GRIND FINISH

FTV-335
B3-6841

DESIGNER J. SEAN'S	DATE 3-3-66	TITLE DRUM ASSEMBLY	MATERIAL	PATTERNS OR PART NUMBER
CHECKED	DATE 3-21-66	3-0" DIA X 4-0" FACE FILTER		
APPROVED	DATE 6-16-66	AMERICAN MACHINE AND METALS, INC. EAST MOENE, ILLINOIS		D330-476 D