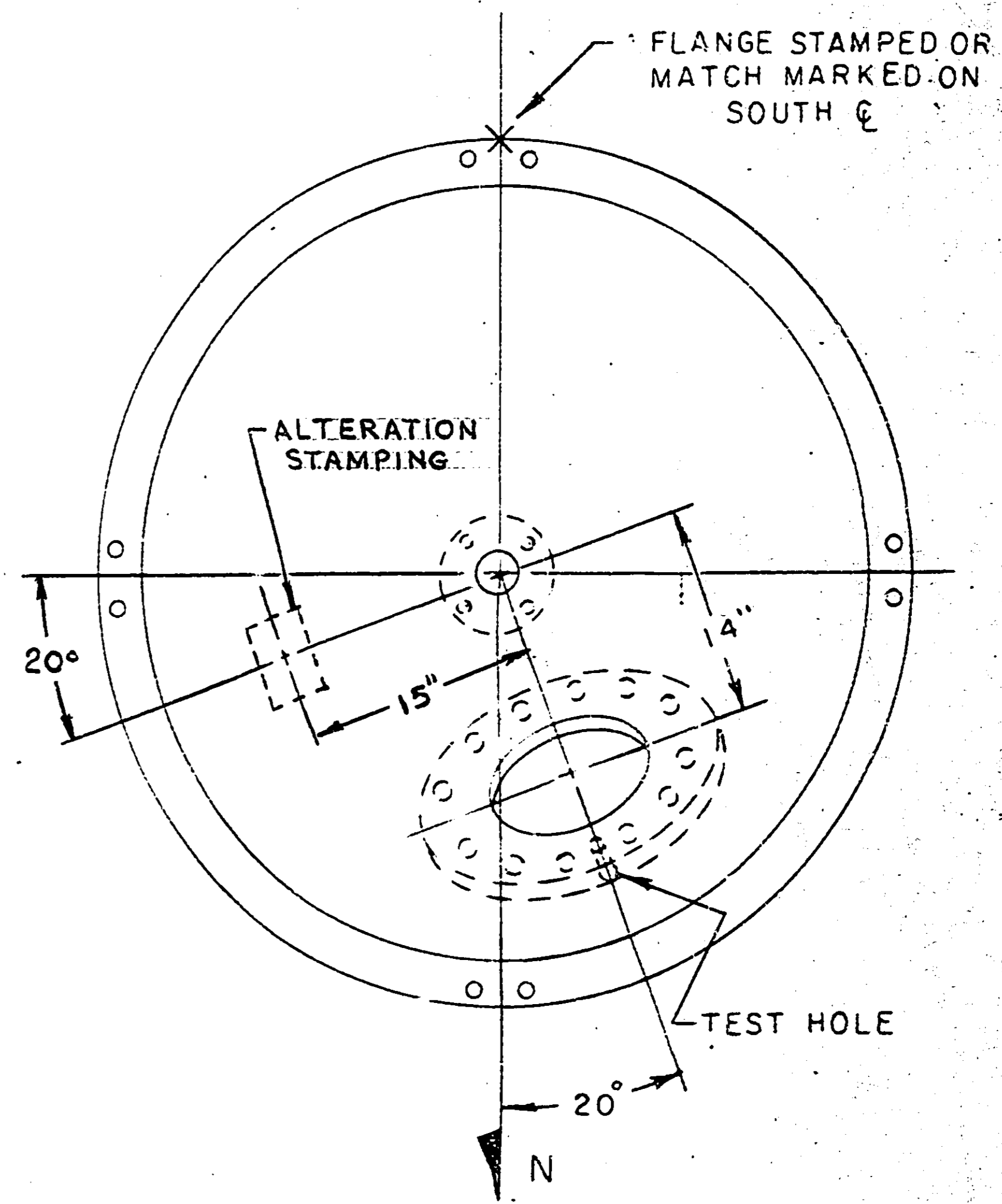


TEST HOLE

(1) NEW 12\"/>

NOTES:

1. ALTERATION TO BE IN ACCORDANCE WITH A.S.M.E. P.V. CODE, SECT. VIII, DIV. 1, 1983 ED. & ADDENDAS TO SUMMER '84 & NATIONAL BOARD RULES FOR ALTERATIONS & REPAIRS TO PRESSURE VESSELS.
2. ALTERATION STAMP REQUIRED.
3. DESIGN PRESSURE: 75 P.S.I.G. & FULL VAC.
DESIGN TEMPERATURE: 200° F. CORROSION ALLOWANCE: 1/16"
HYDROSTATIC TEST WELDS: 120 P.S.I.G. (LOCALLY).
4. ALL STAINLESS STEEL PLATE TO BE: A.S.M.E. SA-240, T-316L.
CARBON STEEL STUDDING OUTLET TO BE: A.S.M.E. SA-285, GR.C PLATE.
CARBON STEEL COVER TO BE: A.S.M.E. SA-515, GR.70 PLATE.
BOLTING TO BE: A.S.M.E. SA-193, GR. B-7 W/ SA-194, CL-2H HEX. NUTS.
5. GRIND INSIDE WELDS SMOOTH & FLUSH. REMOVE ALL SLAG & WELD SPATTER FROM WELDS.
6. POWER WIRE BRUSH CARBON STEEL PARTS & PAINT ONE COAT "CONLUX" LINIC RICH PRIMER.
7. VESSEL MFG. BY: NORTHWEST COPPER WORKS, INC. PORTLAND, OR.
SERIAL NO. 50250 NAT'L. BOARD NO. 1507
H.I.F. POS. NO. B214-X6605 EQUIP. CODE: EVP-23000.



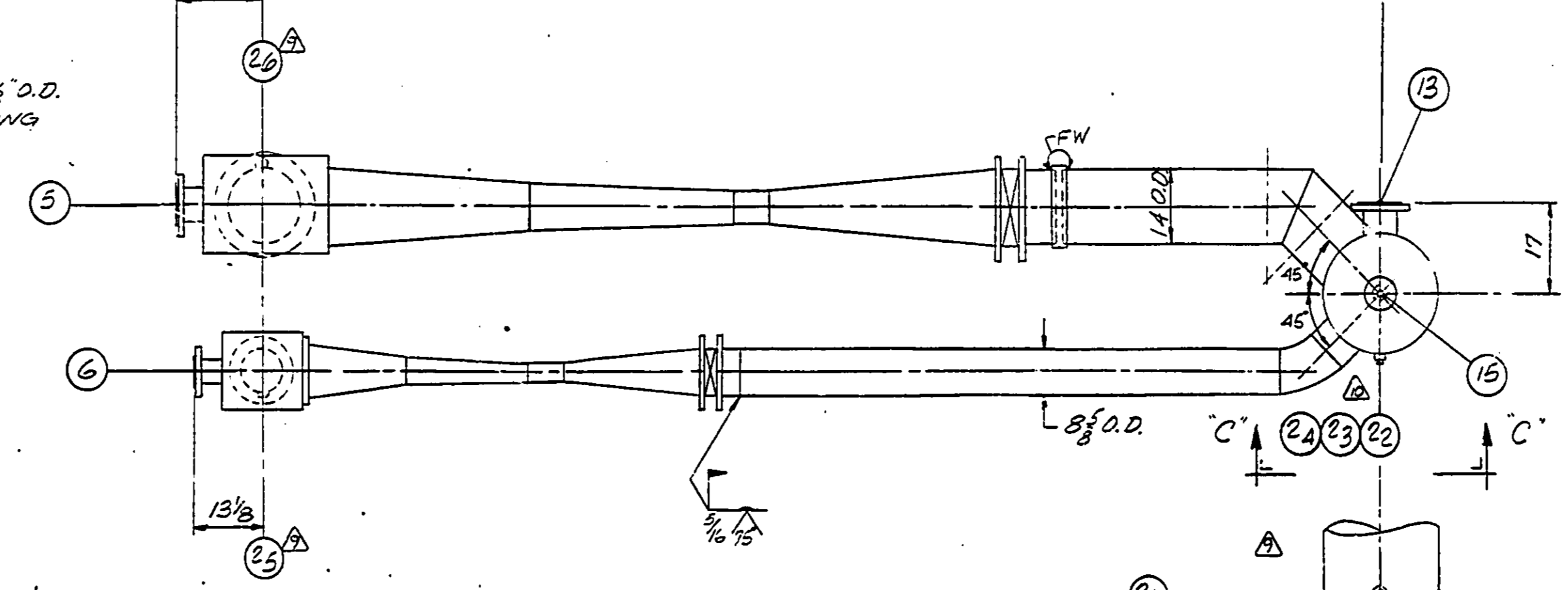
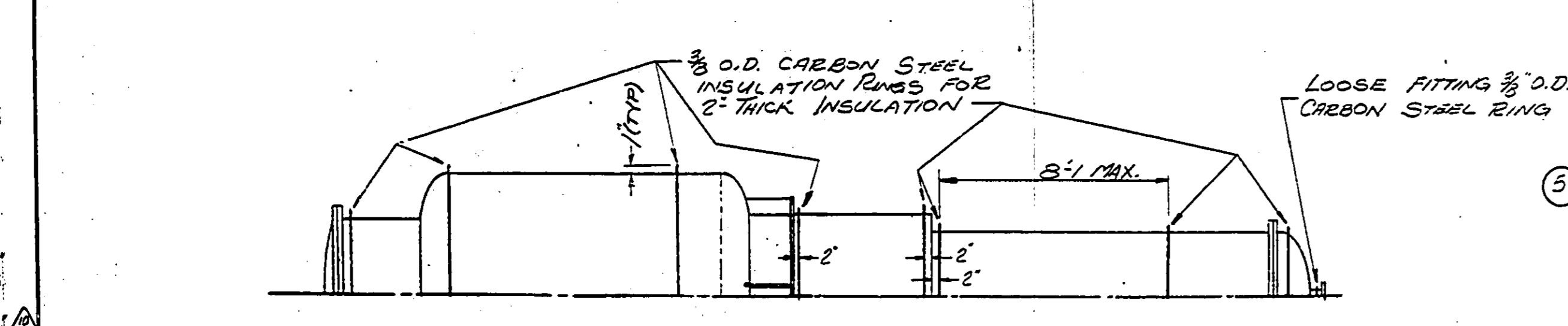
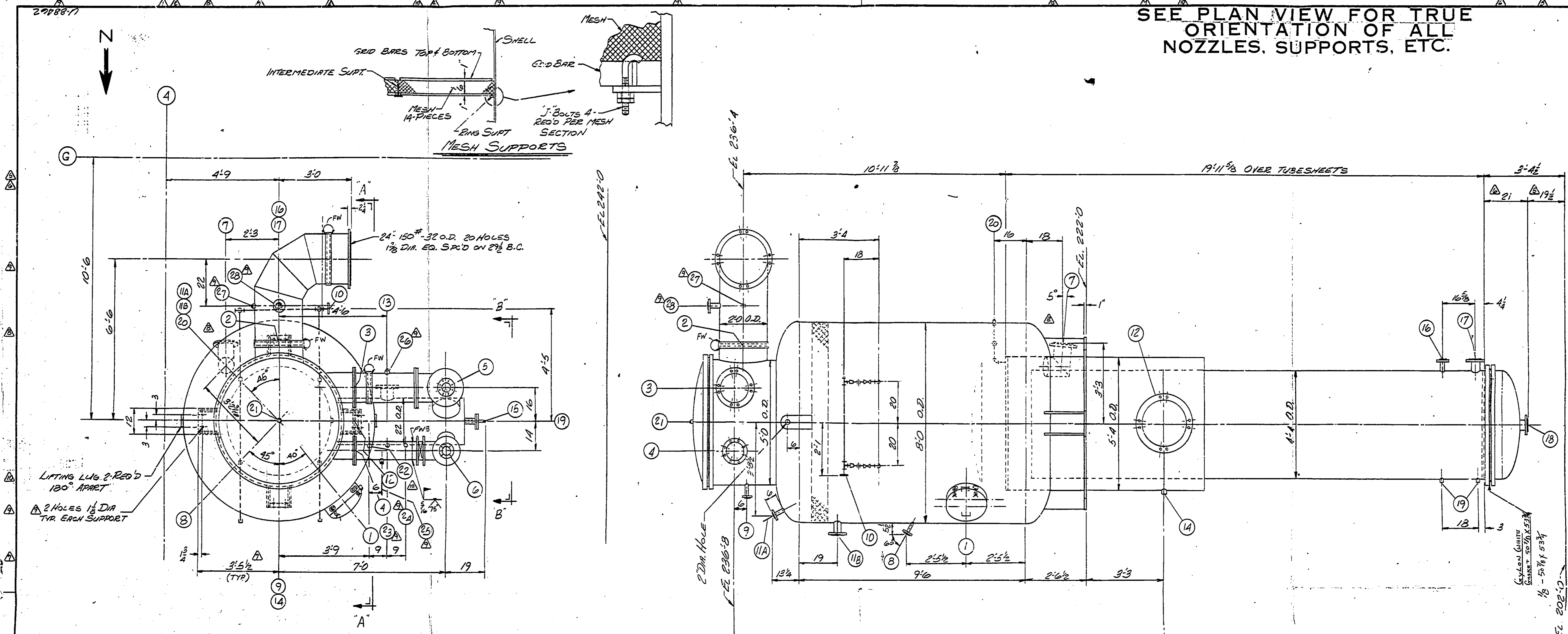
PLAN VIEW

"AS FABRICATED"
CERTIFIED DRAWING
 UNIT FABRICATED IN STRICT ACCORDANCE WITH THIS DRAWING.
ROCKAWAY TANK, INC.
 U.S. 46 AND LEE AVE.
 DOVER, NEW JERSEY
 J. Walsh 7-24-86

EVP-23000

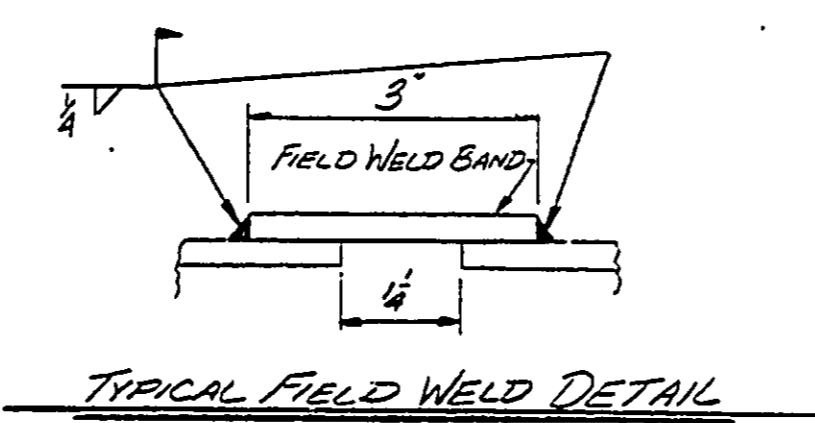
DESIGNER	DATE	BY	APPROVED
SPECO 5-6-86	7-21-86	J.W.	J.W.
SCALE	MATERIAL		T-316L
3/8" = 1"	CUST. FILE		H
P.C. NUMBER	REFERENCE		SK-10-21-85
B-330578-A	JOB NO.		R-7261
	DRAWING NUMBER		RT-3-304-B
	NEW 12" HANDHOLE IN EVAPORATOR BOTT.HD.		

SEE PLAN VIEW FOR TRUE ORIENTATION OF ALL NOZZLES, SUPPORTS, ETC.



CUSTOMER - HOFFMANN-LAROCHE INC
 PROJECT - 110-2216
 LOCATION - BLDG. 214
 EQUIP NAME -
 P.O. NO - E283758 B
 POSITION 12 -
 EQUIP CODE NO - 2214-X6605
 EIP - 23000
 EIA - 23009, 23010

NOTES:
 ALL NOZZLES FOR CUSTOMER'S CONNECTIONS TO BE 150° ANSI DRILLING UNLESS OTHERWISE NOTED
 FW - INDICATES FIELD WELD
 FW3 INDICATES FIELD WELD WITH 3" ALLOWED FOR TRIM
 ALL FIELD WELDS BY CUSTOMER
 ALL PARTS IN CONTACT WITH THE VAPOR, LIQUID OR CONDENSATE OF THE PROCESS WILL BE FABRICATED OF TYPE 316L STAINLESS STEEL
 GASKETS - CHELCOCK GYDON
 WEIGHTS:
 (INCLUDE HEATER, VAPOR BODY, VAPOR PIPING AND THERMO COMPRESSOR'S)
 EMPTY - 39,700 LB
 FULL OF WATER - 101,600 LB
 OPERATING - 59,000 LB



Part	Description
1	1/2" 20 MIDDLE HANGER
2	1/2" 20 NECK VAPOR DISCHARGE (CONV. WELD)
3	1/2" 20 NOZZLE 150° VAPOR OUTLET
4	1/2" 20 NOZZLE 150° STEAM INLET (1" x 1/2")
5	1/2" 20 NOZZLE 150° STEAM INLET (1" x 1/2")
6	1/2" 20 NOZZLE 150° STEAM INLET (1" x 1/2")
7	1/2" 20 NOZZLE 150° STEAM INLET (1" x 1/2")
8	1/2" 20 NOZZLE 150° STEAM INLET (1" x 1/2")
9	1/2" 20 NOZZLE 150° STEAM INLET (1" x 1/2")
10	1/2" 20 NOZZLE 150° STEAM INLET (1" x 1/2")
11	1/2" 20 NOZZLE 150° STEAM INLET (1" x 1/2")
12	1/2" 20 NOZZLE 150° STEAM INLET (1" x 1/2")
13	1/2" 20 NOZZLE 150° STEAM INLET (1" x 1/2")
14	1/2" 20 NOZZLE 150° STEAM INLET (1" x 1/2")
15	1/2" 20 NOZZLE 150° STEAM INLET (1" x 1/2")
16	1/2" 20 NOZZLE 150° STEAM INLET (1" x 1/2")
17	1/2" 20 NOZZLE 150° STEAM INLET (1" x 1/2")
18	1/2" 20 NOZZLE 150° STEAM INLET (1" x 1/2")
19	1/2" 20 NOZZLE 150° STEAM INLET (1" x 1/2")
20	1/2" 20 NOZZLE 150° STEAM INLET (1" x 1/2")
21	1/2" 20 NOZZLE 150° STEAM INLET (1" x 1/2")
22	1/2" 20 NOZZLE 150° STEAM INLET (1" x 1/2")
23	1/2" 20 NOZZLE 150° STEAM INLET (1" x 1/2")
24	1/2" 20 NOZZLE 150° STEAM INLET (1" x 1/2")
25	1/2" 20 NOZZLE 150° STEAM INLET (1" x 1/2")
26	1/2" 20 NOZZLE 150° STEAM INLET (1" x 1/2")
27	1/2" 20 NOZZLE 150° STEAM INLET (1" x 1/2")
28	1/2" 20 NOZZLE 150° STEAM INLET (1" x 1/2")
29	1/2" 20 NOZZLE 150° STEAM INLET (1" x 1/2")
30	1/2" 20 NOZZLE 150° STEAM INLET (1" x 1/2")
31	1/2" 20 NOZZLE 150° STEAM INLET (1" x 1/2")
32	1/2" 20 NOZZLE 150° STEAM INLET (1" x 1/2")
33	1/2" 20 NOZZLE 150° STEAM INLET (1" x 1/2")
34	1/2" 20 NOZZLE 150° STEAM INLET (1" x 1/2")
35	1/2" 20 NOZZLE 150° STEAM INLET (1" x 1/2")
36	1/2" 20 NOZZLE 150° STEAM INLET (1" x 1/2")
37	1/2" 20 NOZZLE 150° STEAM INLET (1" x 1/2")
38	1/2" 20 NOZZLE 150° STEAM INLET (1" x 1/2")
39	1/2" 20 NOZZLE 150° STEAM INLET (1" x 1/2")
40	1/2" 20 NOZZLE 150° STEAM INLET (1" x 1/2")
41	1/2" 20 NOZZLE 150° STEAM INLET (1" x 1/2")
42	1/2" 20 NOZZLE 150° STEAM INLET (1" x 1/2")
43	1/2" 20 NOZZLE 150° STEAM INLET (1" x 1/2")
44	1/2" 20 NOZZLE 150° STEAM INLET (1" x 1/2")
45	1/2" 20 NOZZLE 150° STEAM INLET (1" x 1/2")
46	1/2" 20 NOZZLE 150° STEAM INLET (1" x 1/2")
47	1/2" 20 NOZZLE 150° STEAM INLET (1" x 1/2")
48	1/2" 20 NOZZLE 150° STEAM INLET (1" x 1/2")
49	1/2" 20 NOZZLE 150° STEAM INLET (1" x 1/2")
50	1/2" 20 NOZZLE 150° STEAM INLET (1" x 1/2")
51	1/2" 20 NOZZLE 150° STEAM INLET (1" x 1/2")
52	1/2" 20 NOZZLE 150° STEAM INLET (1" x 1/2")
53	1/2" 20 NOZZLE 150° STEAM INLET (1" x 1/2")
54	1/2" 20 NOZZLE 150° STEAM INLET (1" x 1/2")
55	1/2" 20 NOZZLE 150° STEAM INLET (1" x 1/2")
56	1/2" 20 NOZZLE 150° STEAM INLET (1" x 1/2")
57	1/2" 20 NOZZLE 150° STEAM INLET (1" x 1/2")
58	1/2" 20 NOZZLE 150° STEAM INLET (1" x 1/2")
59	1/2" 20 NOZZLE 150° STEAM INLET (1" x 1/2")
60	1/2" 20 NOZZLE 150° STEAM INLET (1" x 1/2")
61	1/2" 20 NOZZLE 150° STEAM INLET (1" x 1/2")
62	1/2" 20 NOZZLE 150° STEAM INLET (1" x 1/2")
63	1/2" 20 NOZZLE 150° STEAM INLET (1" x 1/2")
64	1/2" 20 NOZZLE 150° STEAM INLET (1" x 1/2")
65	1/2" 20 NOZZLE 150° STEAM INLET (1" x 1/2")
66	1/2" 20 NOZZLE 150° STEAM INLET (1" x 1/2")
67	1/2" 20 NOZZLE 150° STEAM INLET (1" x 1/2")
68	1/2" 20 NOZZLE 150° STEAM INLET (1" x 1/2")
69	1/2" 20 NOZZLE 150° STEAM INLET (1" x 1/2")
70	1/2" 20 NOZZLE 150° STEAM INLET (1" x 1/2")
71	1/2" 20 NOZZLE 150° STEAM INLET (1" x 1/2")
72	1/2" 20 NOZZLE 150° STEAM INLET (1" x 1/2")
73	1/2" 20 NOZZLE 150° STEAM INLET (1" x 1/2")
74	1/2" 20 NOZZLE 150° STEAM INLET (1" x 1/2")
75	1/2" 20 NOZZLE 150° STEAM INLET (1" x 1/2")
76	1/2" 20 NOZZLE 150° STEAM INLET (1" x 1/2")
77	1/2" 20 NOZZLE 150° STEAM INLET (1" x 1/2")
78	1/2" 20 NOZZLE 150° STEAM INLET (1" x 1/2")
79	1/2" 20 NOZZLE 150° STEAM INLET (1" x 1/2")
80	1/2" 20 NOZZLE 150° STEAM INLET (1" x 1/2")
81	1/2" 20 NOZZLE 150° STEAM INLET (1" x 1/2")
82	1/2" 20 NOZZLE 150° STEAM INLET (1" x 1/2")
83	1/2" 20 NOZZLE 150° STEAM INLET (1" x 1/2")
84	1/2" 20 NOZZLE 150° STEAM INLET (1" x 1/2")
85	1/2" 20 NOZZLE 150° STEAM INLET (1" x 1/2")
86	1/2" 20 NOZZLE 150° STEAM INLET (1" x 1/2")
87	1/2" 20 NOZZLE 150° STEAM INLET (1" x 1/2")
88	1/2" 20 NOZZLE 150° STEAM INLET (1" x 1/2")
89	1/2" 20 NOZZLE 150° STEAM INLET (1" x 1/2")
90	1/2" 20 NOZZLE 150° STEAM INLET (1" x 1/2")
91	1/2" 20 NOZZLE 150° STEAM INLET (1" x 1/2")
92	1/2" 20 NOZZLE 150° STEAM INLET (1" x 1/2")
93	1/2" 20 NOZZLE 150° STEAM INLET (1" x 1/2")
94	1/2" 20 NOZZLE 150° STEAM INLET (1" x 1/2")
95	1/2" 20 NOZZLE 150° STEAM INLET (1" x 1/2")
96	1/2" 20 NOZZLE 150° STEAM INLET (1" x 1/2")
97	1/2" 20 NOZZLE 150° STEAM INLET (1" x 1/2")
98	1/2" 20 NOZZLE 150° STEAM INLET (1" x 1/2")
99	1/2" 20 NOZZLE 150° STEAM INLET (1" x 1/2")
100	1/2" 20 NOZZLE 150° STEAM INLET (1" x 1/2")

3	FEB 5, 1985 TP	1	JAN 3, 1985
4	FEB 22, 1985 TP	2	JAN 25, 1985

"CONFIDENTIAL"
 This information is the property of Signal Swenson Division, UOP Inc., and is strictly confidential. Disclosure to anyone outside of your company, reproduction, transmission or use of this information is prohibited without written permission from Signal Swenson Division, UOP Inc., Harvey, Illinois.

Signal Swenson Division
 15700 Lathrop Avenue, Harvey, IL 60426
 Phone: 312-331-5500 • Telex 25 3274
 UOP Inc.

REQ - 84247	TITLE - GENERAL ARRANGEMENT OF LTY THERMOCOMPRESSOR EVAPORATOR UNIT
DR. TP DATE 1-25-85	FOR - HOFFMANN LAROCHE INC NUTLEY, NEW JERSEY
CH. TRCN DATE 2-8-85	SCALE 1/2" = 1'-0"
TR. DATE	APPROVED REA
APPROVED REA	U-38462

EIP-23000

CUST ORDER NO E-283758B

S-473