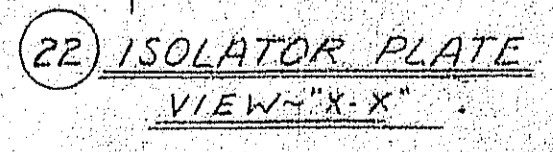
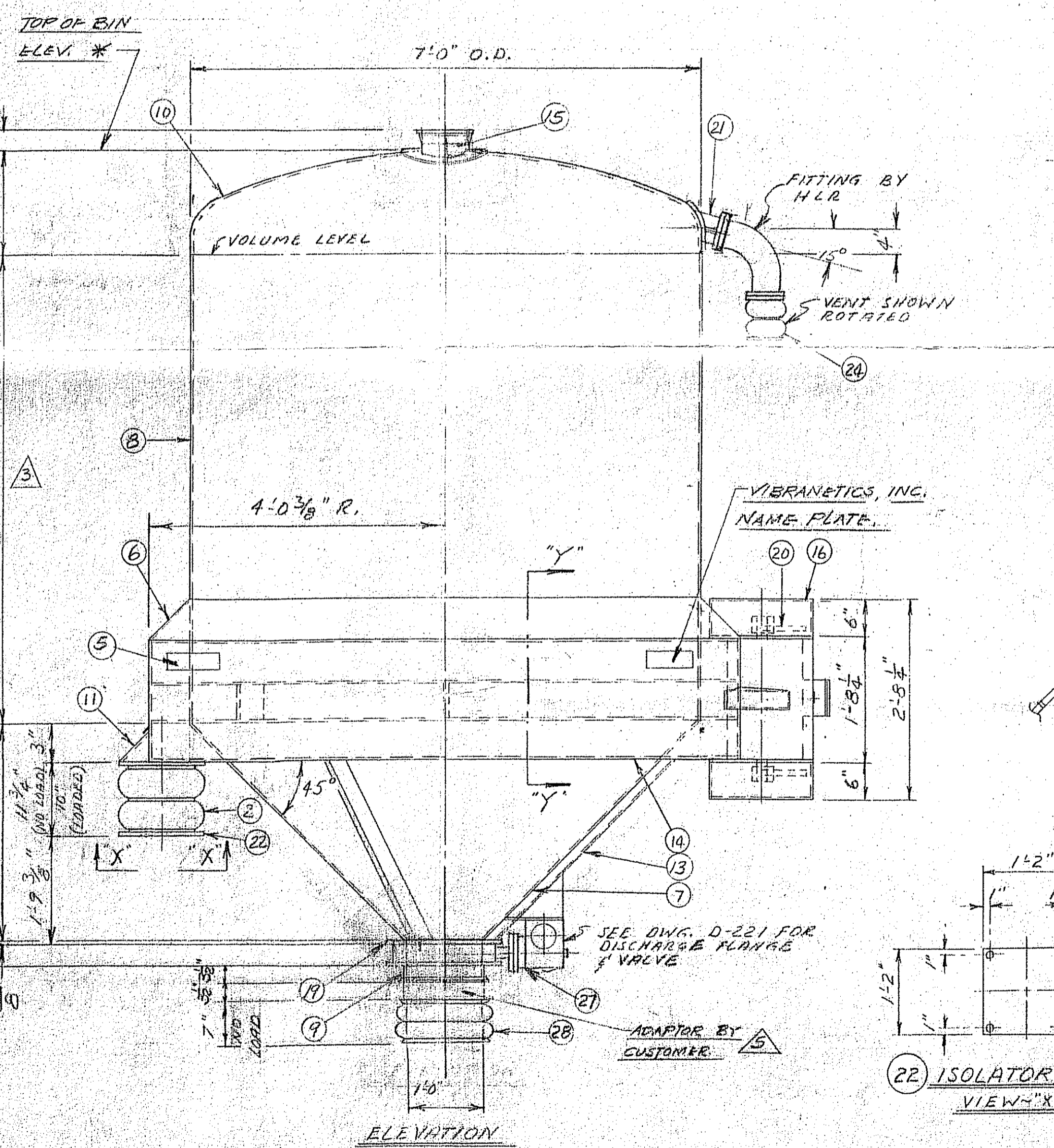
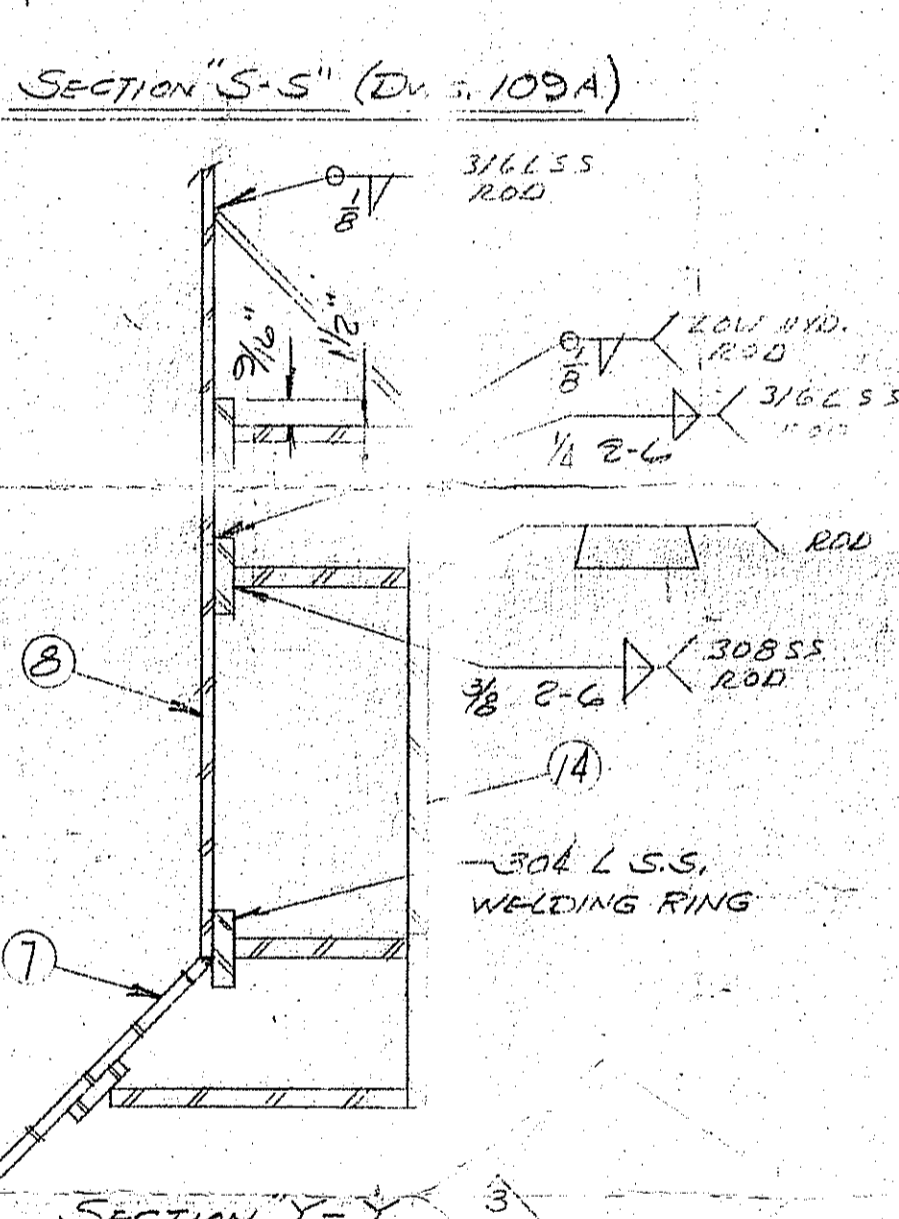
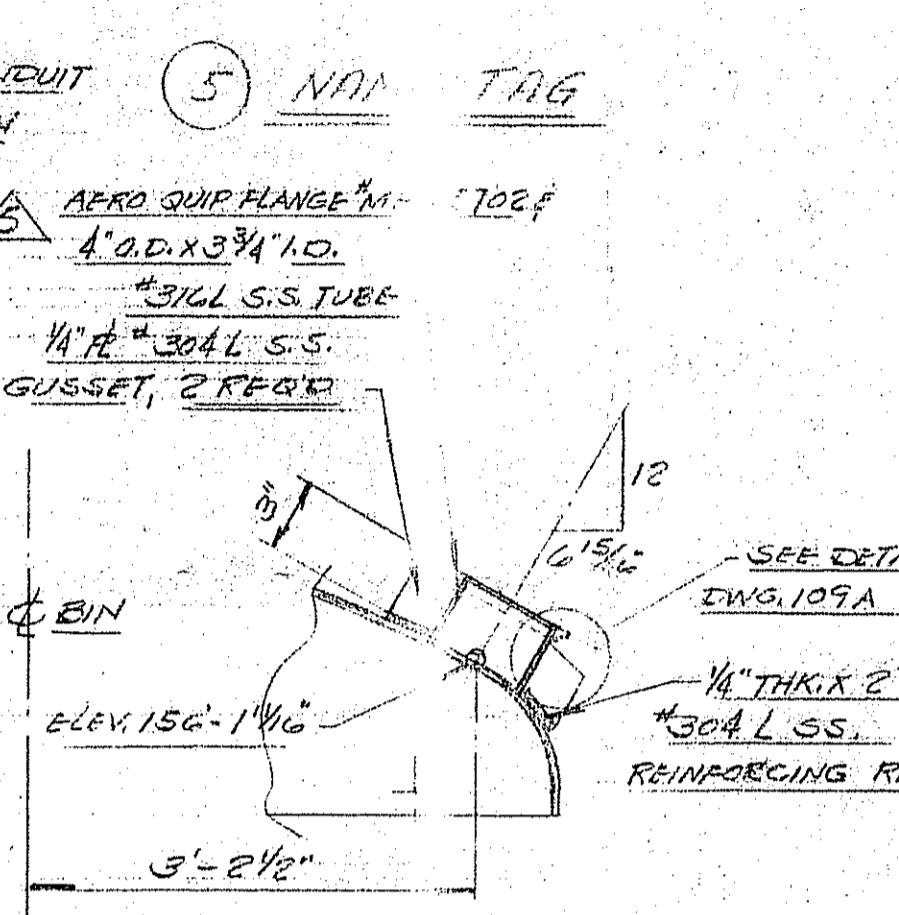


MANUF. - VIB. METRICS, INC.
 FABR. - ENF. HASS
 P.O. # 3727
 POSITION NO. *
 EQUIP. CODE NO. *
 SERIAL NO. *
 DESIGN TEM. - 75 °F.
 PRE. - 150 P.S.I. (MAX.)
 CAPA. - 300 CU. FT.
 DATE OF MAN. *
 TAG



ITEM	COMPONENT	QUAN.	SPECIFICATIONS	DWG. NO.	PART NO.
1	VIBRATORY EXCITOR	1	VEH-10030 20000# MAX. FORCE		
2	ISOLATOR	3	VIM-21 (LIQUID MOUNT WITH SNUGGER)		
3	GROUNDING LUG	1	1/2" # 12 GA. WIRE	D-218	
4					
5	NAME TAG	1	# 1 GA. S.S.	D-109	
6	DUST DEFLECTOR	1	# 1/4 GA. # 304 L.S.S.	D-218	
7	CONE SECTION	1	1/4" # 316 L.S.S.	D-217	
8	VERTICAL SHELL	1	1/4" # 316 L.S.S.	D-217	
9	BOTTOM RING	1	1/4" # 316 L.S.S. # / P.O. # 3727-22-T-346	D-221	
10	SHELL TOP	1	ASME F.F.D. HEAD # 316 L.S.S.	D-109A	
11	ISOLATOR BRKT.	3	3/8" # 316 L.S.S.	D-218	
12	MOTOR BRKT.	1	1/2" # 316 L.S.S.	D-217	
13	STIFFENER	3	2" X 2" X 1/4" # 304 L.S.S.	D-221	
14	STIFFENER RING	1	3/8" # 316 L.S.S.	D-217	
15	CIP OPENING	1	8" O.D. # 316 L.S.S. / FL. MEM. 5702	D-109A	
16	ECCENTRIC WT. COVER	2	# 1/4 GA. 14 S.	D-219	
17	MANHOLE WITH COVER	1	18" DIA. # 316 L.S.S.	D-226	
18	RUPTURE DISC CONNECTION	1	24" I.D. FLANGE # 316 L.S.S. 1 1/2" THK.	D-109A	
19	DISCHARGE FLANGE	1	1/2" # 316 L.S.S.	D-221	
20	ECCENTRIC WEIGHT	2	ADD (D) 1/2" (3) 1/4" # 1/3" MAX.	D-225	200-20
21	VENT AIR OUTLET	1	3/4" DIA. PIPE # 316 L.S.S.	D-109A	
22	ISOLATOR PLATE	3	1/2" THK X 2" W # 304 L.S.S.	B-365	100-22-4
23	RUPTURE DISC FLEX. CONN.	1	24" / P.O. # 3727-39-T-347	D-220	
24	FLEXIBLE SANITARY CONN.	1	/ P.O. # 3727-40-T-348	D-227	
25	DISCHARGE GATE	1	12" DIA. / P.O. # 3727-22-T-346	D-221	
26					
27	VALVE & OPERATOR	1	/ P.O. # 3727-22-T-346		
28	PRODUCT OUTLET	1	12" / P.O. # 3727-40-T-348	D-227	

- UNIT - VB-1093 4" 5"
- UNIT - VB-1094 4" 5"
- UNIT - VB-1095 (3) 4"
- UNIT - VB-1096 (3) 4"
- UNIT - VB-1097 (3) 4"
- UNIT - VB-1098 (3) 4"

NOTES:
 (1) ALL BIN COMPONENTS TO WITHSTAND AN EXPLOSION PRESSURE UP TO 150 P.S.I.
 (2) ALL PARTS IN CONTACT WITH THE PRODUCT SHALL BE TYPE 316 L.S.S. ON THE OUTSIDE, ALL CARBON STEEL PARTS WELDED TO THE BIN SHALL HAVE A STRIP OF 304 L.S.S. BETWEEN THEM. NO CARBON STEEL PART CAN BE WELDED DIRECTLY TO THE BIN.
 (3) PROTECT BINS FROM IRON CONTAMINATION DURING FABRICATION.
 (4) BIN DESIGNED PER ASME CODE SECTION VIII LATEST EDITION. STAMP NOT REQUIRED.

NOTE:
 ITEMS: 9, 23, 29, 25, 27 & 28 ARE SUPPLIED WITH ANOTHER P.O.

CUSTOMER: HOFFMANN-LAROCHE, INC.
 PLANT: CORCORAN ACID PLANT (PROJECT 66)
 LOCATION: BELVIDERE, N.J.
 CONTRACTOR: ARTHUR G. MCKEE & CO.
 CONTRACT NO. 3727
 TAG NO. T-306
 POSITION NOS. 83-6204, 83-6205, 83-6240, 83-6241, 83-8401, 83-8402
 TAG NO. *

SERIAL NO.	S.O. NO.	ITEM NO.	TAG OR POSITION NO.	BIN ELEV.
VB-1093	1107	1	83-6204	175'-2"
VB-1094	1107	2	83-6205	175'-2"
VB-1095	1108	5	83-6240	150'-11"
VB-1096	1109	6	83-6241	150'-11"
VB-1097	1110	9	83-8401	150'-5 1/2"
VB-1098	1110	9	83-8402	156'-3 1/2"

NOTES:
 (5) SUPER FRENCH FINISH OR EQUAL ON ALL INSIDE SURFACES. WITH WELDS GROUND FLUSH WITH UNIFORM STRIPE.
 (6) OUTSIDE FINISH AS FOLLOWS:
 (A) ALL STAINLESS STEEL "SUPER FRENCH" OR EQUAL WITH ALL S.S. WELDS CLEANED WITH UNIFORM STRIPE.
 (B) ALL MILD STEEL SHALL BE SPPE-SG6 SANDBLAST CLEANED & PRIMED WITH 2 COATS PRUFOTE RED PRIMER.
 (7) ALL BOLTS ON S.S. MEMBERS TO BE S.S. #302 OR #304 & CARBON PLATED ON MILD STEEL MEMBERS.
 (8) WELDS WILL BE W/UT STOPPED (SEE LINE STARTER) & FINISH BY OTHERS.
 (9) 6 UNIT - REQ'D - SERIAL NOS. VB-1093 & VB-1094 ON SO # 1077. SERIAL NOS. VB-1095 ON S.O. # 1108. SERIAL NOS. VB-1096 ON SO # 1107. SERIAL NOS. VB-1097 & VB-1098 ON S.O. # 1110.
 (10) ALL OUTSIDE S.S. SURFACES ARE TO BE PAPER PROTECTED BY FABRICATOR, FOR SHIPMENT.

THIS DRAWING CERTIFIED CORRECT 1116-71 VIBRANETICS, INC.

DYNAMIC REACTIONS		MISCELLANEOUS INFORMATION		PRODUCT CHARACTERISTICS		DESIGN INFORMATION		MOTOR SPECIFICATION	
VERTICAL REACTION	39130 LBS.	MATERIAL SOURCE	CONVEYOR (PNEUMATIC)	PRODUCT	PHARMACEUTICAL POWDER	D.F.		H.P.	3
HORIZONTAL REACTION	8000 LBS.	DISCHARGE TO		DENSITY	50 #/FT. ³ MAX.	Wt		R.P.M.	1200
V.R. / MOUNT	13043 LBS.	UPPER BIN DIA.		RATE	25.5 TO 30.4 T.P.D.	Wt		FRAME	256T
H.R. / MOUNT	2667 LBS.	UPPER BIN HEIGHT		TEMP.	AMBIENT	GROSS WT.	5700	PHASE	3
MOUNTING ARRANGEMENT		UPPER BIN SLOPE		MOISTURE %	1 (MAX.)	M.R.		CYCLE	60
W/UT STOPPED	1000 CELLS	MAT DEPTH		PRESSURE	150 PSI (MAX. DESIGN)	STROKE		VOLTAGE	230/46
CELL VOLT. REACTION I	4.5 LBS @ 1190 CPM			PRESSURE	ATMOSPHERIC (OPERATING)	AUGER R.P.M.		AMP. I.D. @ 46	
CELL VOLT. REACTION II	333 LBS @ 1190 CPM			MESH	-200	CAPACITY	300 FT. ³	ENCLOSURE	612 CB.F.

REV.	DATE	DESCRIPTION	REFERENCE DWGS.
9	1-3-72	DESIGN CHANGE	
8	11-16-71	NOTE 10 ADDED	
7	8-1-71	DWG CHANGE ITEM 18	
6	8-25-71	CUSTOMER CHANGE	
5	1-20-71	CUSTOMER CHANGE	
4	2-7	NOTE CHANGE & DWG. UPDATED	
3	8-10	APPROVAL CHANGE	
2	1-21	DWG. UPDATED	
1	4-5-71	DWG. UPDATED	

DRAWN - FEW 12-18-70
 CHECKED -
 ENGINEER - GDD
 SCALE 3/4" = 1"
 FILE NO. - AVE-70-12-23
 P.O. NO. - 3727-18-7302
 SERIAL NO. - SEE NOTE 9
 S.O. NO. - SEE NOTE 5
 DWG. NO. D-109
 REY. No. 9

VIBRANETICS, INC.
 300 CU. FT. VIBRATORY BIN
 HOFFMANN-LAROCHE, INC.

EQUIP. CODE NO. H-P-D-671-1