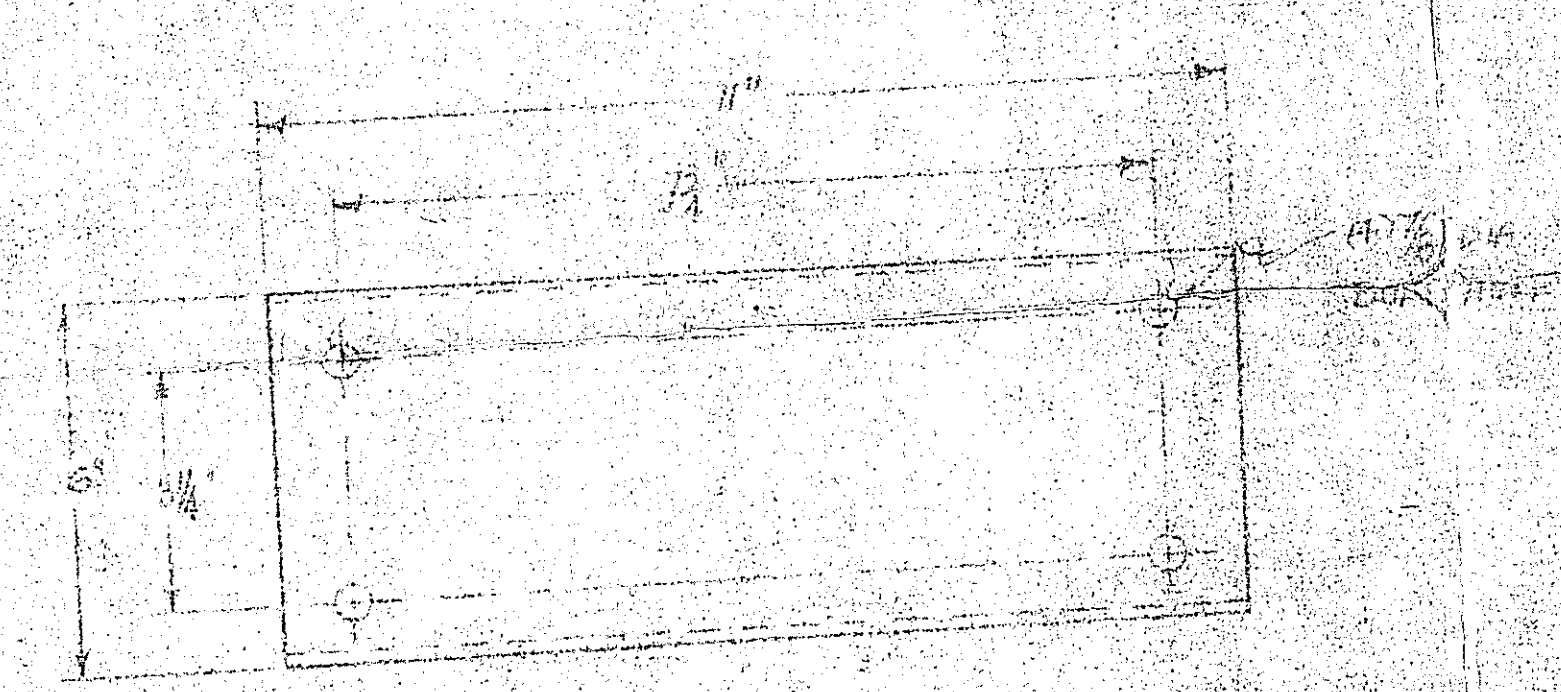
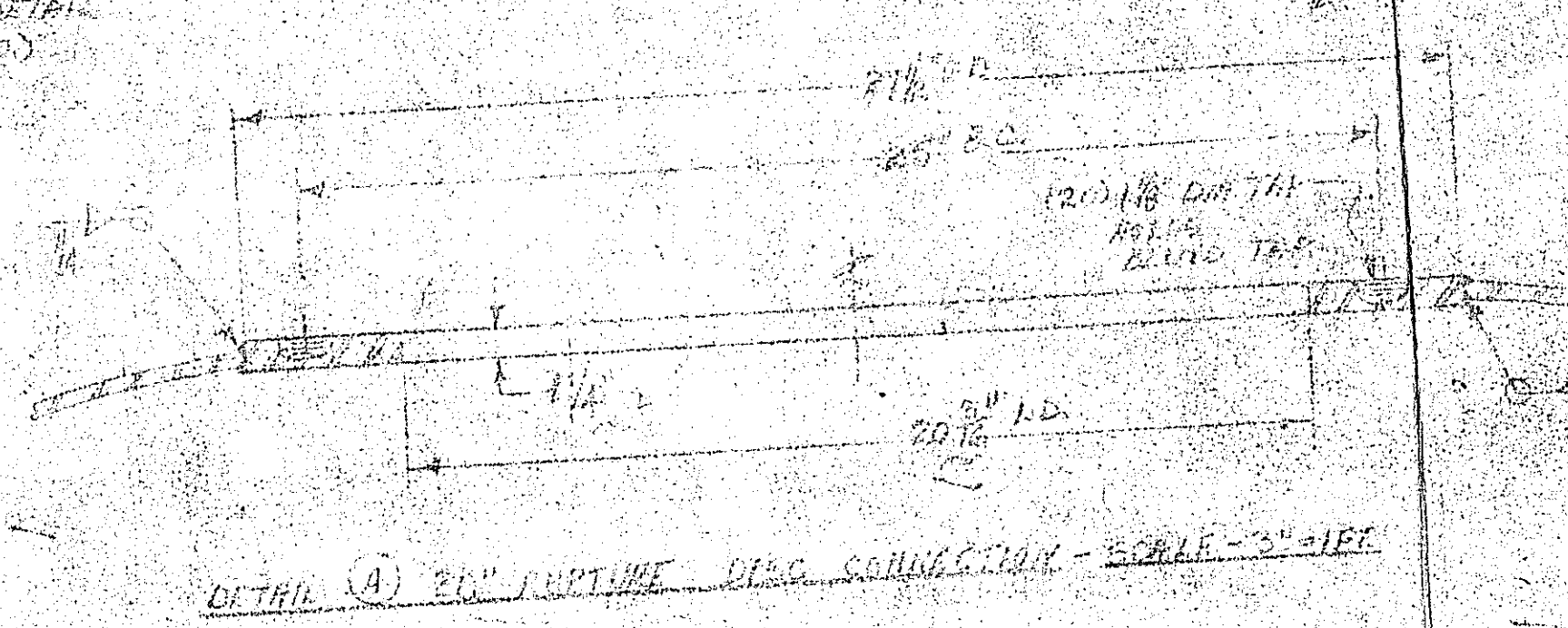
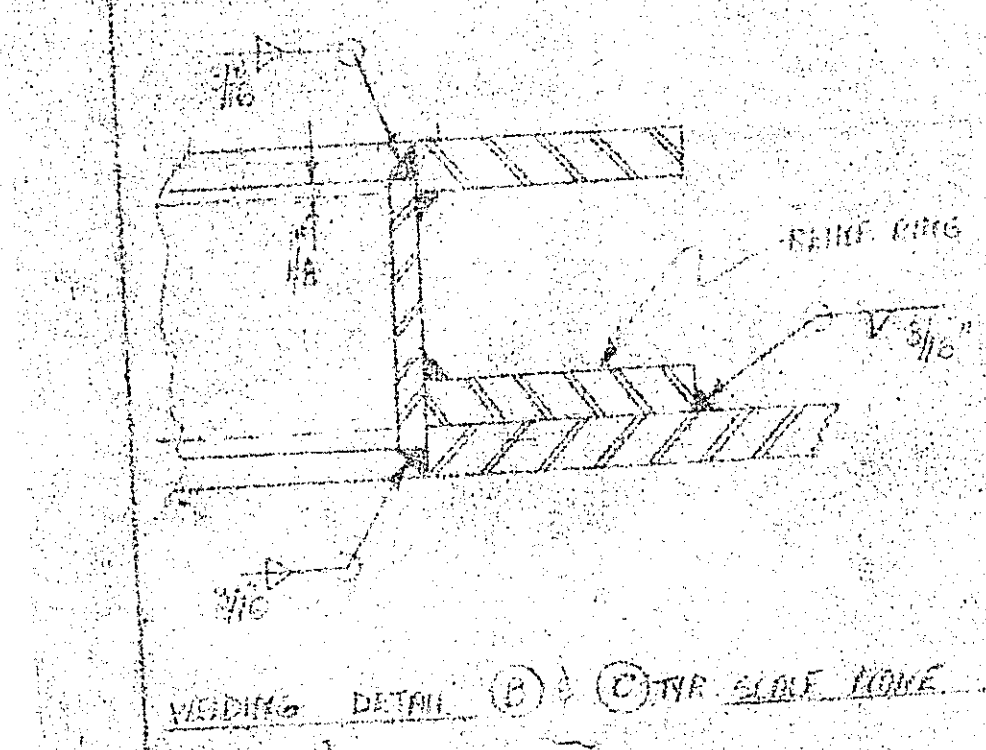
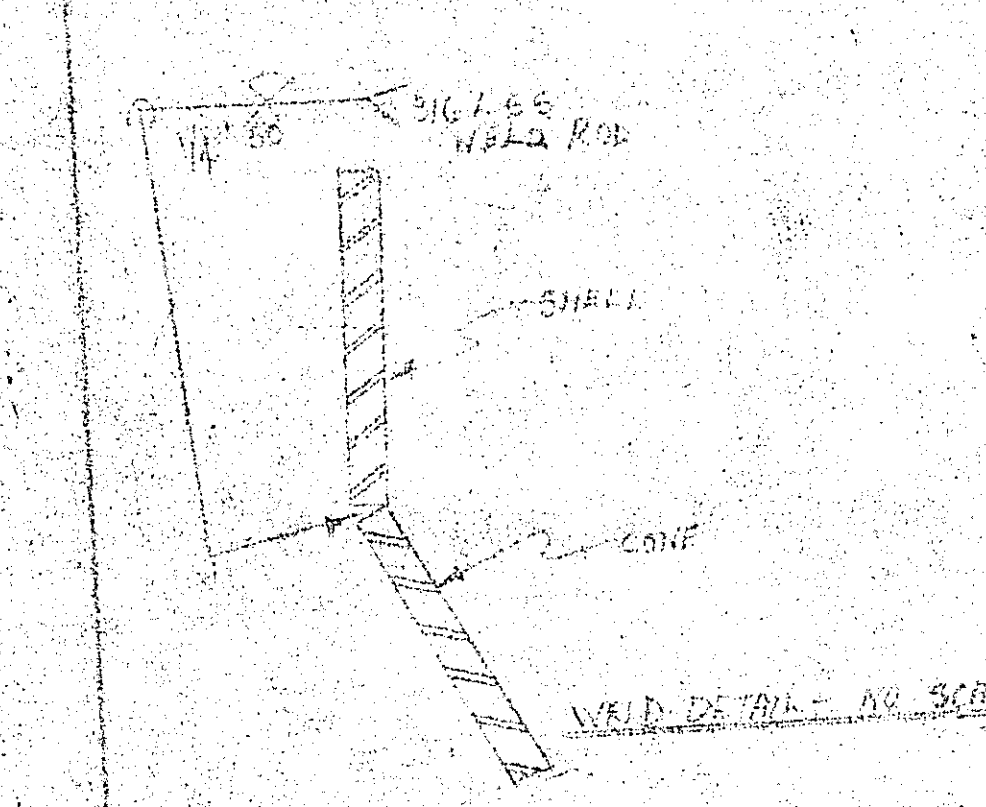
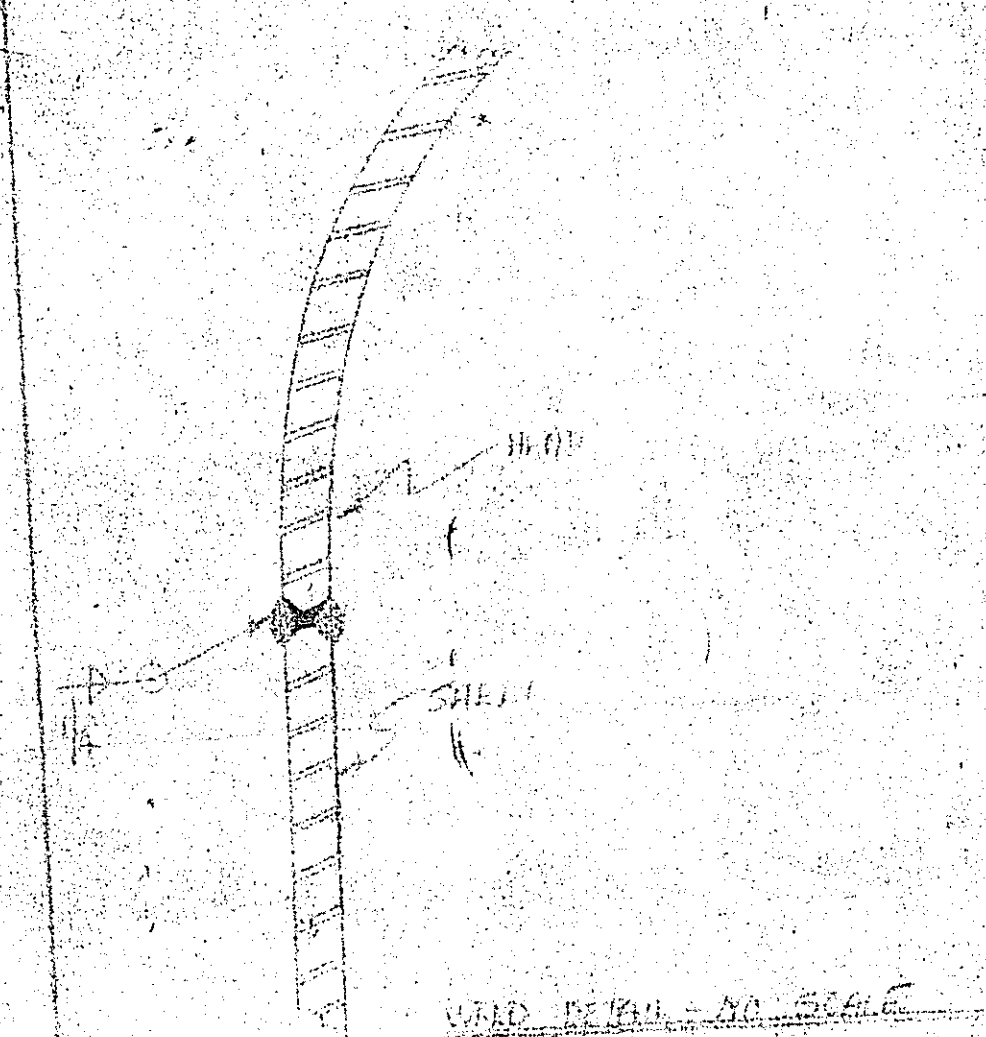


- NOTES**
- EXTREME CARE MUST BE EXERCISED IN WELDING AND FINISHING TO PREVENT NON CONTAMINATION DEL. ADHESIONS. WIRELS AND BRUSHES SHALL BE KEPT AND PRESERVED FOR USE ON THIS JOB.
  - WELD JOINTS - MUST BE KEPT CLEAN AND PROTECTED FROM THE PRODUCT. SHALL BE 3/8" TYPE SIGL.
  - ALL OPENINGS SHALL BE PROTECTED FOR SHIPMENT. COVER OPENINGS WITH PROTECTIVE CAPS AND SEMI, SO NO DIRT OR PARTICLES WILL GET INTERIOR.
  - PROTECT INTERIOR FROM SCRATCHES.



**CERTIFIED FOR**  
 PROJECT 66  
 NO. # 371-3T  
 DATE 7/1/71

PROJECT 66 PROJECT NO. 66-6930  
**GENERAL NOTES**  
 QUANTITIES DESIGNATED FOR 37-54 IN TEMP. 75° F.  
 OPERATING PRESS. 150 PSIG  
 SURVIVING CARK PRESSURE AT VIBRATION SHOCK TESTS  
 INTERIOR ALL PARTS IN CONTACT WITH THE PRODUCT SHALL BE 3/8" TYPE SIGL.  
 COVER OPENINGS WITH PROTECTIVE CAPS AND SEMI, SO NO DIRT OR PARTICLES WILL GET INTERIOR.  
 PROTECT INTERIOR FROM SCRATCHES.  
 COIL: 15% CARB. STEEL  
 STAINLESS STEEL  
 WELDING: AS PER SPEC  
 PAINTING: MIL-C-171, SURFACES PAINTED  
 FINISH: 150  
 CAPACITY: OPERATING - 6,100 GALS.  
 FULL - 7,500 GALS.  
 ESTIMATED WEIGHT: EMPTY - 1,500 LB.  
 OPERATING - 4,600 LB.

**PRINTS MADE**  
 JUN 10 1971  
 MCNEE & CO.  
 CHICAGO, ILL.

RET. DWS NO. 545-200-511 (HOFFMANN-LE ROCHE) PROJECT 66

MARK	NO.	SIZE	DATE
A	1	20"	7/1/71
B	1	18"	7/1/71
C	1	18"	7/1/71
D	1	18"	7/1/71
E	1	18"	7/1/71
S	2	18"	7/1/71

**HPD-384 B3-6930**  
 HOFFMANN-LE ROCHE  
 PROJECT 66  
 NO. # 371-3T  
 POS. NO. 65-6930  
 MS REF. DWS NO. 630-1702

1.51  
 1.00  
 1.2  
 1.25  
 1.4  
 1.5

X108326