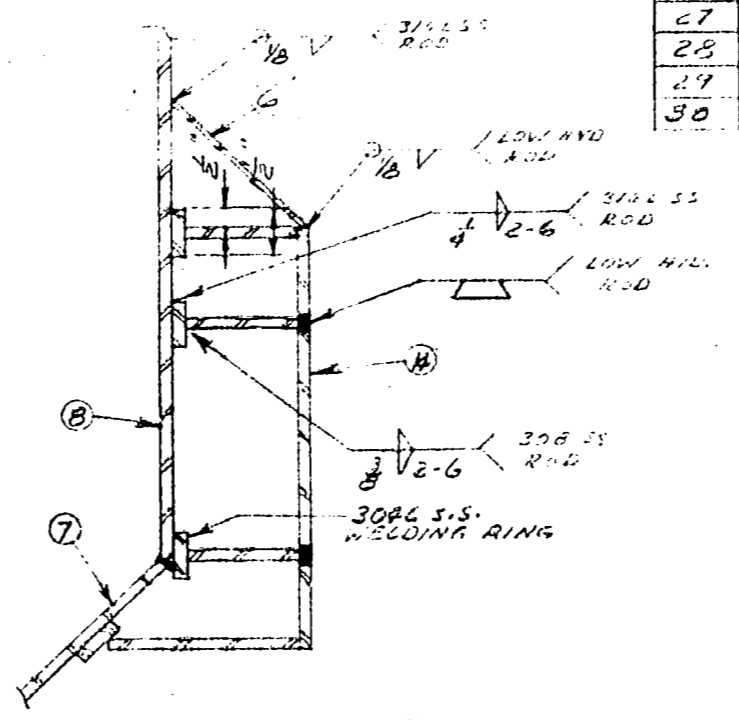
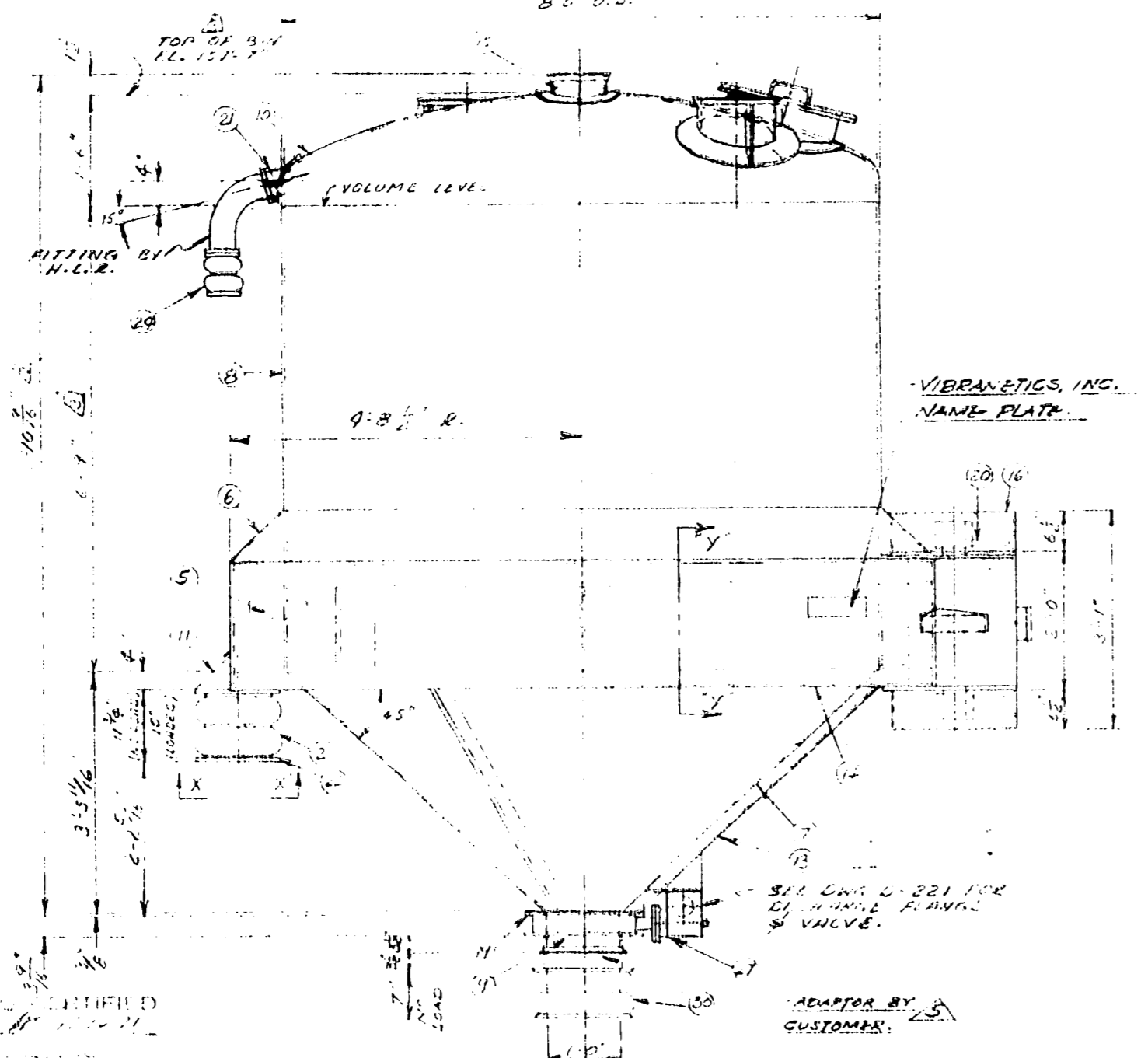
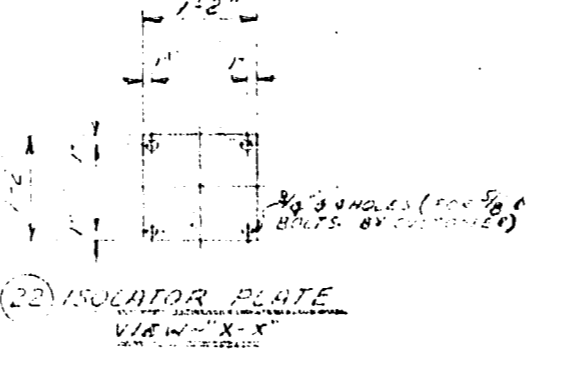


MANUF: VIBRANETICS, INC.  
 FABR: EXPERT-HAAS  
 P.O. # 3727 12-T-306  
 POSITION # 83-CB13  
 GROUP CODE NO.  
 SPE. NO. VE-1045  
 DESIGN TEMP. 75°F  
 PRESS. 150 P.S.I. (MAX)  
 CAPACITY 400 CU. FT.  
 DATE OF MANUF. -

10 (5" NAME PLATE)



SECTION - "Y-Y" (A)



ITEM	DESCRIPTION	QTY	ITEM NO.	QTY	ITEM NO.
1	ISOLATOR	1	10	1	10
2	ISOLATOR	1	11	1	11
3	ISOLATOR	1	12	1	12
4	ISOLATOR	1	13	1	13
5	ISOLATOR	1	14	1	14
6	ISOLATOR	1	15	1	15
7	ISOLATOR	1	16	1	16
8	ISOLATOR	1	17	1	17
9	ISOLATOR	1	18	1	18
10	ISOLATOR	1	19	1	19
11	ISOLATOR	1	20	1	20
12	ISOLATOR	1	21	1	21
13	ISOLATOR	1	22	1	22
14	ISOLATOR	1	23	1	23
15	ISOLATOR	1	24	1	24
16	ISOLATOR	1	25	1	25
17	ISOLATOR	1	26	1	26
18	ISOLATOR	1	27	1	27
19	ISOLATOR	1	28	1	28
20	ISOLATOR	1	29	1	29
21	ISOLATOR	1	30	1	30

NOTE:  
 ITEMS 9, 21, 22, 25, 27 & 30  
 ARE SUPPLIED WITH  
 ANOTHER P.O.

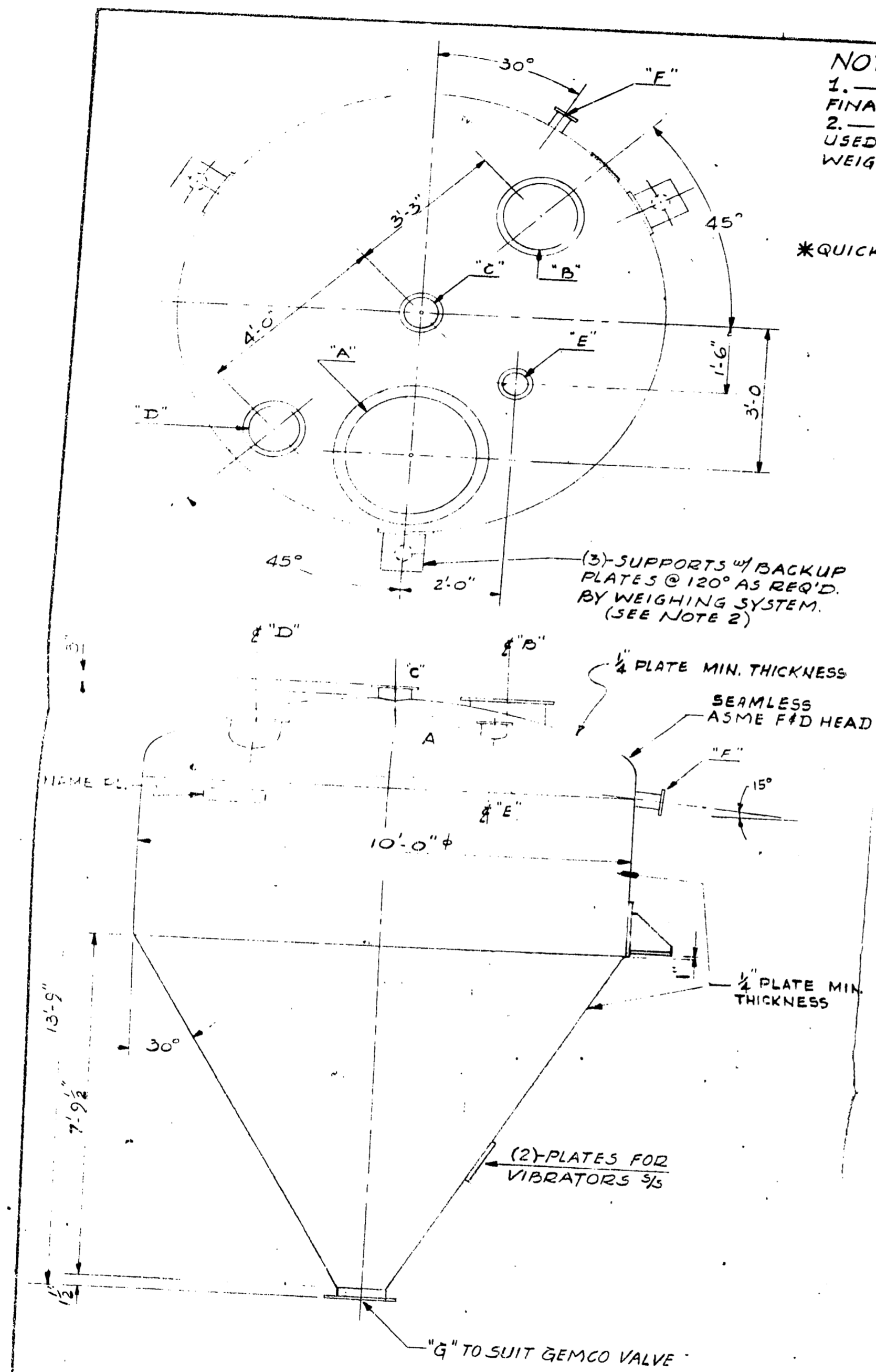
PRINTS MADE  
 JAN 14 1972  
 MCKEE & CO.  
 CHICAGO, ILL.

1. ALL DIMENSIONS ARE IN INCHES UNLESS OTHERWISE SPECIFIED.  
 2. ALL DIMENSIONS ARE TO CENTER UNLESS OTHERWISE SPECIFIED.  
 3. ALL DIMENSIONS ARE TO FACE UNLESS OTHERWISE SPECIFIED.  
 4. ALL DIMENSIONS ARE TO CENTER UNLESS OTHERWISE SPECIFIED.  
 5. ALL DIMENSIONS ARE TO FACE UNLESS OTHERWISE SPECIFIED.  
 6. ALL DIMENSIONS ARE TO CENTER UNLESS OTHERWISE SPECIFIED.  
 7. ALL DIMENSIONS ARE TO FACE UNLESS OTHERWISE SPECIFIED.  
 8. ALL DIMENSIONS ARE TO CENTER UNLESS OTHERWISE SPECIFIED.  
 9. ALL DIMENSIONS ARE TO FACE UNLESS OTHERWISE SPECIFIED.  
 10. ALL DIMENSIONS ARE TO CENTER UNLESS OTHERWISE SPECIFIED.

DYNAMIC REACTIONS		MISCELLANEOUS INFORMATION		PRODUCT CHARACTERISTICS		DESIGN INFORMATION		MOTOR SPECIFICATIONS		DESIGN CHANGES		DRAWN	
VERTICAL REACTION	500 LBS	MATERIAL SOURCE	CONVEYOR (MATERIAL)	PRODUCT	CONVEYOR (MATERIAL)	D.P.		H.P.	5	1-1-72	DESIGN CHANGE	1-1-72	SCALE
HORIZONTAL REACTION	100 LBS	DISCHARGE TO	CONVEYOR (MATERIAL)	DENSITY	20 #/CU. FT.	Wt		R.P.M.	1200	7-1-72	DATE	7-1-72	ENGINEER
U.S. THROUGH	1722	UPPER BIN DIA.	36"	RATE	25.5 TO 30.5 T.P.D.	Wt		PHASE	3PH	5-1-72	CUSTOMER CHANGE	5-1-72	SCALE
U.S. THROUGH	1722	UPPER BIN HEIGHT	18"	TEMP.	75°F	GROSS WT.	7350	PHASE	3	4-1-72	CUSTOMER CHANGE	4-1-72	SCALE
U.S. THROUGH	1722	UPPER BIN SLOPE	15°	MOISTURE %	1.0 (MAX)	M.E.		CYCLE	160	3-1-72	CUSTOMER CHANGE	3-1-72	SCALE
U.S. THROUGH	1722	UPPER BIN SLOPE	15°	PRESSURE	150 P.S.I. (MAX)	STROKE	1/8"	VOLTAGE	230/110	2-1-72	CUSTOMER CHANGE	2-1-72	SCALE
U.S. THROUGH	1722	UPPER BIN SLOPE	15°	MOISTURE %	1.0 (MAX)	AUGER R.P.M.	1200	AMP.	5.0	1-1-72	CUSTOMER CHANGE	1-1-72	SCALE
U.S. THROUGH	1722	UPPER BIN SLOPE	15°	MOISTURE %	1.0 (MAX)	CAPACITY	400 CU. FT.	ENCLOSURE	2-1-72	1-1-72	CUSTOMER CHANGE	1-1-72	SCALE

VIBRANETICS, INC.

D-110 B36919



NOTES: —  
 1. — ORIENTATION OF CONNECTIONS TO BE FINALIZED ON VENDORS APPROVAL PRINT.  
 2. — SUPPORTS MUST BE DESIGNED TO BE USED WITH LOAD CELLS OR OTHER APPROVED WEIGHING SYSTEM.

\*QUICK DISCONNECT — TYP. FLANGES

(3) SUPPORTS w/ BACKUP PLATES @ 120° AS REQ'D. BY WEIGHING SYSTEM. (SEE NOTE 2)

1/4" PLATE MIN. THICKNESS  
 SEAMLESS ASME F14 HEAD

1/4" PLATE MIN. THICKNESS

(2) PLATES FOR VIBRATORS 3/8"

"G" TO SUIT GEMCO VALVE

ESB

Project: 66 Project No. 1610-2022 Eng. WTD  
 GENERAL NOTES Flowsheet No. 00203

CONDITIONS:  
 Design Press: \_\_\_\_\_ Vessel Jacket Coil  
 Operating Press: 0 PSIG 75° PSIG \_\_\_\_\_ PSIG \_\_\_\_\_ PSIG  
 Bursting Check Pressure At Ultimate Strength = 150 PSIG  
 MATERIALS:  
 Shell & Heads: 316 L 1/4" THICK  
 Jacket: \_\_\_\_\_  
 Coil: \_\_\_\_\_  
 Bolting: 3/8"  
 Gaskets: TEFLON ENVELOPE OR WHITE NEOPRENE  
 Supports: 3/8" LUGS w/ 3/8" BACKUP PL.

CORROSION ALLOWANCE: (Thickness)  
 Shell: 0" Jacket: \_\_\_\_\_ Top Head: 0" Bottom Head: 0"  
 Jacket Head: \_\_\_\_\_ Coil: \_\_\_\_\_

CONSTRUCTION:  
 Code: ASME  
 Stress Relief: \_\_\_\_\_ Radiograph  
 Testing: HYDROSTATIC  
 Inspection: BY CONT.  
 Stamping: NOT REQ'D

NOZZLE PROJECTION: \_\_\_\_\_ Inches

PAINTING: \_\_\_\_\_  
 to be applied to any alum. or S/S surfaces.

INSULATION SUPPORTS: Are not required.  
 CAPACITY: Operating 0-5700 Gal. Pull \_\_\_\_\_ Gal.  
 Full 3700 Gal.

ESTIMATED WEIGHT:  
 Empty 6,000 Lb. Pull of H<sub>2</sub>O \_\_\_\_\_ Lb.  
 Operating 31,000 Lb. Pull of Product \_\_\_\_\_ Lb.

REMARKS:  
 REFERENCE DRAWINGS

Mark	No. Req'd	Size	Rating	Facing	Remarks
M					
L					
K					
J					
H					
G	1	12"			PRODUCT OUTLET
P	1	4"			AIR OUTLET
E	1	6"			PRODUCT INLET
D	1	12"			" "
C	1	8"			C.I.P.
B	1	18"			MANHOLE
A	1	32"			RUPTURE DISC CONNECTION

PRINT MADE  
 FEB 17 1971  
 ARTHUR G. MCKEE & CO.  
 CHICAGO, ILLINOIS

No.	Description	Made by	Appr. by
2	REDESIGNED FITTING FOR CONSTRUCTION	ESB	WJF
1	RELEASED FOR BID ENGINEERING DEPT.	ESB	WJF

Fitting Schedule  
 HOFFMAN-LA ROCHE INC  
 MUTLEY, NEW JERSEY

VESSEL SPECIFICATION  
 Title: 500 P#3 STORAGE BIN

Appr. by Date: \_\_\_\_\_  
 Prepd. by Date: \_\_\_\_\_

Scale: 1/2"=1'-0" Blg. No. 214 Drawing No. SSK-66C-604

This drawing and the information it contains are the property of Hoffman-La Roche, Inc. It is not to be copied or traced, nor is the information to be obtained in any way.