

GENERAL NOTES

CONDITIONS:	Vessel	Jacket	Coil
Design Press:	PSIG - 75	PSIG	PSIG
Operating Press:	PSIG - AMB	PSIG	PSIG

BURSTING CHECK PRESSURE AT ULTIMATE STRENGTH = 150 PSIG

MATERIALS:
 Shell & Heads: 316L 1/4" R MIN.
 Jacket:
 Coil:
 Bolting: S/S
 Gaskets: TEFLON ENVELOPE OR WHITE NEOPRENE
 Supports: S/S LUGS WITH S/S BACKUP PLATE

CORROSION ALLOWANCE: (Thickness)
 Shell: 0 Top Head: 0 Bottom Head: 0
 Jacket: Jacket Head: Coil:

CONSTRUCTION:
 Code: ASME Radiograph
 Stress Relief:
 Testing: HYDROSTATIC
 Inspection: BY GONT
 Stamping: NOT REQ'D.

NOZZLE PROJECTION: Inches

PAINTING: ~~Paint to be applied to all surfaces.~~
 to be applied to any alum. or S/S surfaces.

INSULATION SUPPORTS: Are not required.
 CAPACITY: Operating 0-3000 Gal. 0-100 % Full
 Full 3000 Gal.

ESTIMATED WEIGHT:
 Empty 4000 Lb. Full of H₂O 25000 Lb.
 Operating 25700 Lb. Full of Product 25700 Lb.

REMARKS:

REFERENCE DRAWINGS

Mark	No. Req'd	Size	Rating	Facing	Remarks
* F	1	4"			AIR OUTLET
* E	2	4"			PRODUCT INLET
D	1	12"			PRODUCT OUTLET
* C	1	8"			CIP
B	1	18"			MANHOLE
A	1	28"	150#	FF	RUPTURE DISC CONNECTION

PRINT MADE
 FEB 17 1971
 ARTHUR G. MEE & CO.
 CHICAGO, ILLINOIS

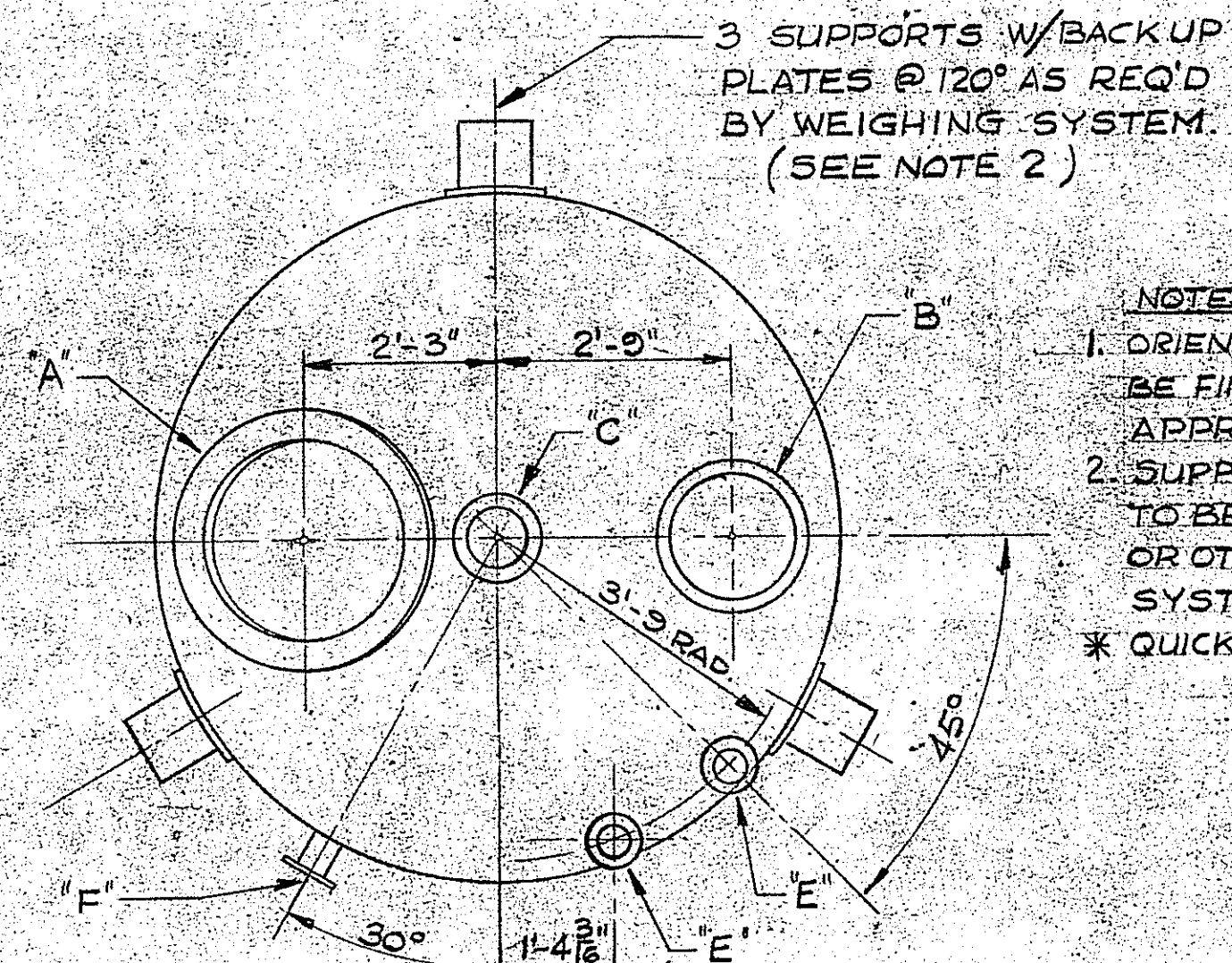
Fitting Schedule

HOFFMANN-LA ROCHE INC.
 MUTLEY, NEW JERSEY (STB-65)

VESSEL SPECIFICATION

Appr. by Date	Proc.	Eng.	Title: S/S STORAGE BIN 400 FT ³
Prep. by Date			#108322
K. OHLSON 2-10-71			Pos. No. B3-6917 No. Req'd 1
Scale: 1/2" = 1'-0"	Bldg. No. 214	Drawing No. SSK-66C-609	

No.	Description	Made by	Appr. by
3	REPAIRS ISSUED	EDS	VJB
2	FOR CONST	2/11/71	
1	RELEASED FOR BID	ENGINEERING DEPT	



- NOTES:
- ORIENTATION OF CONNECTIONS TO BE FINALIZED ON VENDORS APPROVAL PRINT
 - SUPPORTS MUST BE DESIGNED TO BE USED WITH LOAD CELLS OR OTHER APPROVED WEIGHING SYSTEM.
- * QUICK DISCONNECT - TYP. FLANGES

