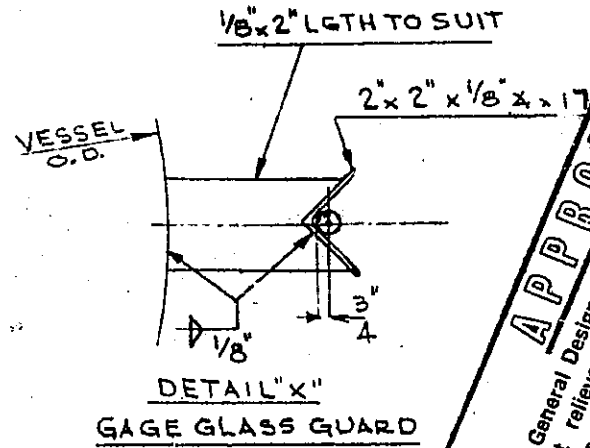
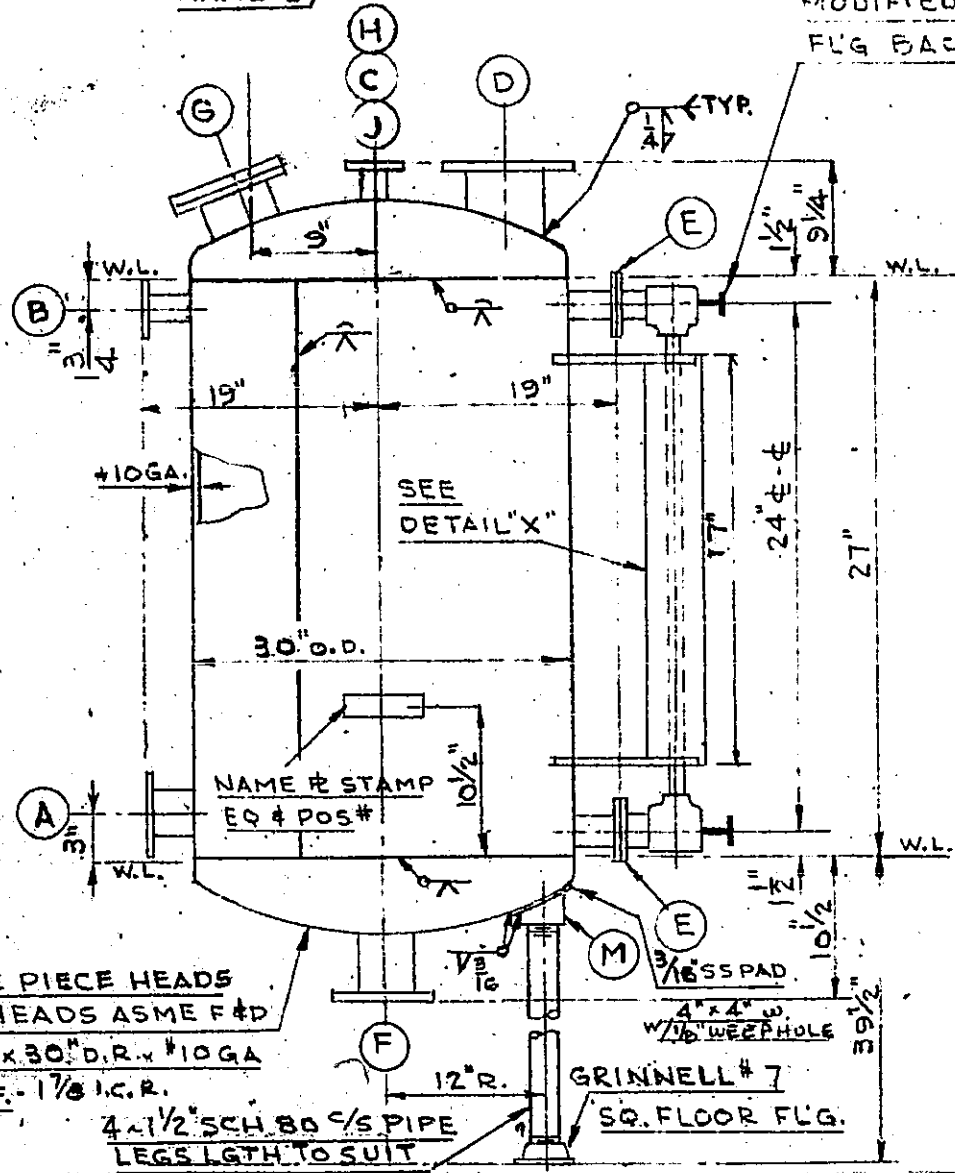


NO	REQ	SIZE	RATING	FACING	REMARKS
A	1	3"	150#	V.S.	LEVEL CONN
B	1	1"		R.F.	WATER LAYER INLET
C	1	2"		V.S.	VENT
D	1	6"		V.S.	M.L. INLET SOLVENTS
E	2	1/2"		R.F.	GAGE GLASS CONN
F	1	4"		V.S.	BOTTOM OUTLET
G	1	6"		F.F.	HAND HOLE W/O SIGHT GLASS
H	1	1"	150"	R.F.	PH RETURN
M	4	1 1/2"	3000"	COUP	C/S
J	1	2"	150"	V.S.	SPARE W/GASKET & BLIND FLG.

ALL NOZZ FLGS - BOLT HOLES STRAD TANKE

GAGE GLASS - ERNST GAGE Co.
 FIG B ES CAT# 3010
 MODIFIED W/150# - 1/2" R.F. SCR.
 FLG BACKWELDED STR



APPROVED

Checked for General Design & Controlling Dimensions Only. This Approval does not relieve the vendor of Responsibility for Correctness of Design, Details and Dimensions.

ARTHUR G. MCKEE & CO.
 BY: *Shannon*
 CLEVELAND OFFICE
 Date: 10/21/70

MATERIAL

SHELL & HEADS - A 240 TYPE-316
 NOZZLES - A-312-316/A-181
 BOLTING - A 325-CAD PLATED
 GASKETS - J.M. #76 OR EQ. - 1/16"
 SUPPORT LEGS - C/S SCH 80 PIPE A-53
 NOZZLES UNDER 2" TO BE SCH 45 5/8" 316 WITH 150# S.O.F.-R.F.

FINISH

S/S - CLEAN INSIDE & OUTSIDE PER SPEC 55 PC-SP 2 & BUFF #80 GRIT OUTSIDE
 C/S - ALL EXTERIOR CARBON STEEL SURFACES TO BE PAINTED WITH PRUF COAT P-50 DRY FILM THK 2.0 MILS MIN. - CLOSE OPENINGS

WT EMPTY - 350# FLOODED - 1300#
 1-REQ'D INSPECTION BY H.L.R. NO S.R.-XRAY-CORRALL.
 H.L.R.-CGO1 & ASME CODE NO STAMP
 DESIGN - 14.5 P.S.I.G. @ 150°F
 HYDROTEST - 23 P.S.I.G.

ENIVEL ENGINEERING CORPORATION
 CLIFTON **B3-5603** NEW JERSEY

HOFFMANN-LA ROCHE INC.
 PO - E 262754-B PROJECT-66
 PO # B3-5603. EQ NO - XTB-355
 CONT: ARTHUR G MCKEE & CO.
 CONT-3726-PO- MCK-3726-22-55#1
 MCKEE DWG- 5603-1

SURGE TANK
 100 GAL
 S/S-316
 POS. # B3-5603

SCALE	BY	DATE	APP'D	DATE	ORDER	DRAWING NO.
3/4"=1'-0"	ALH	6/70	A	6/70	70235	70235-A