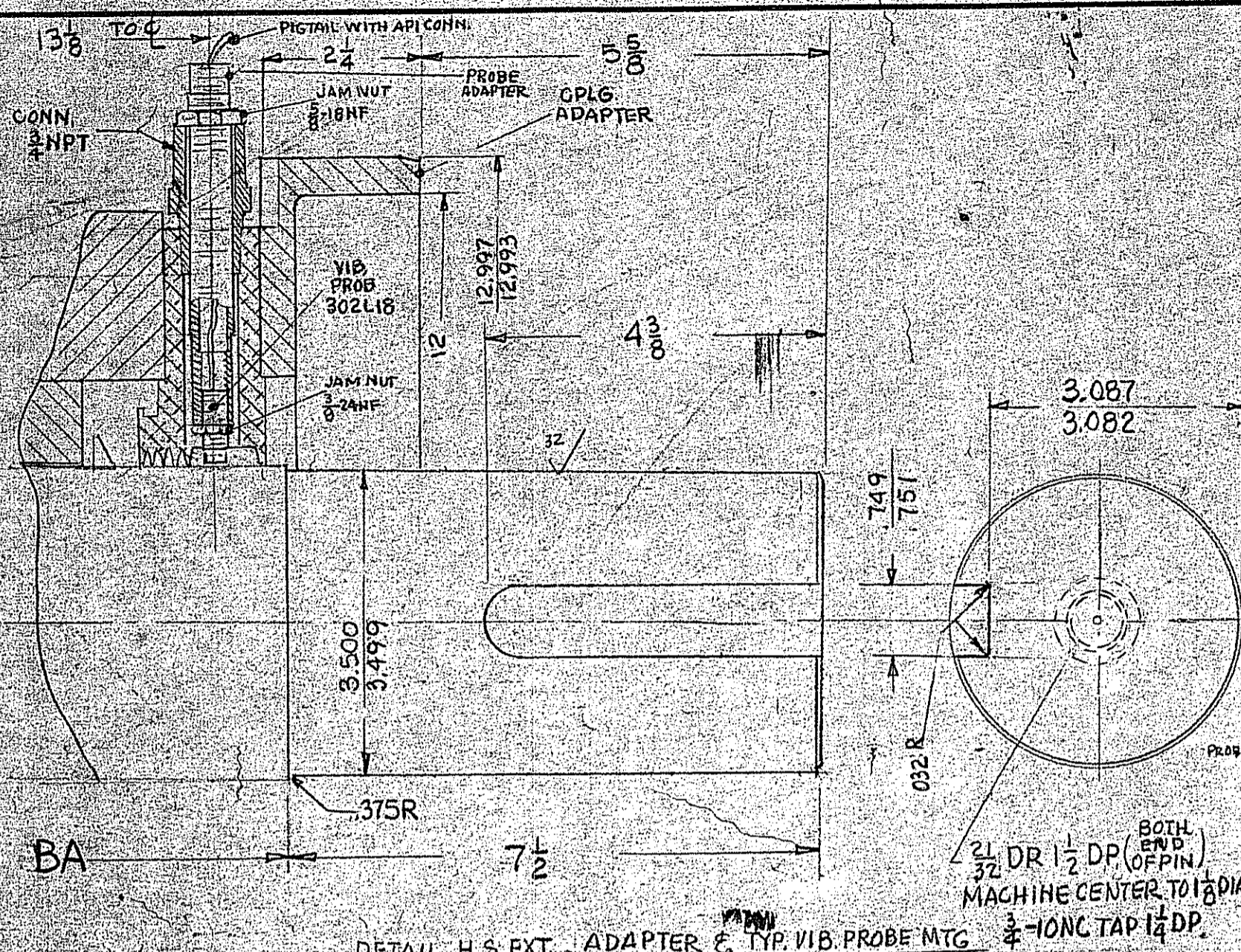


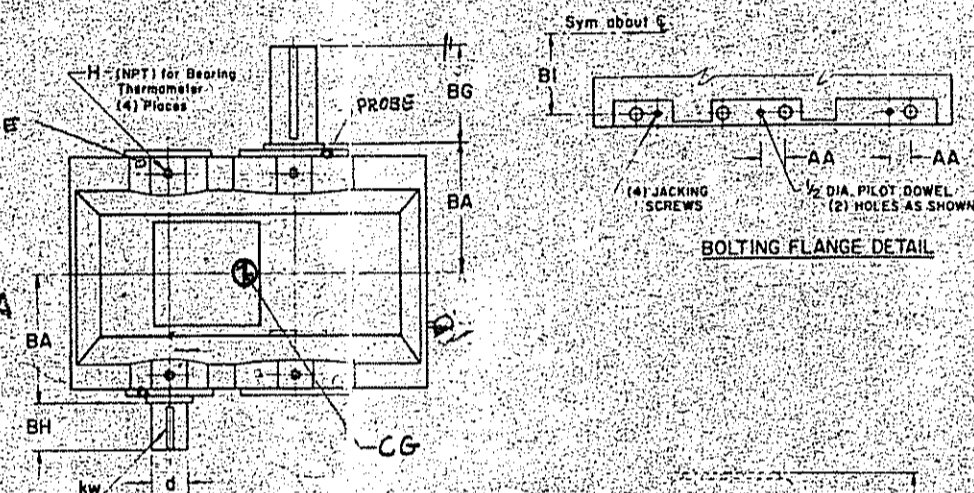
BREAK ALL SHARP CORNERS



WESTERN GEAR CORPORATION

PROPRIETARY

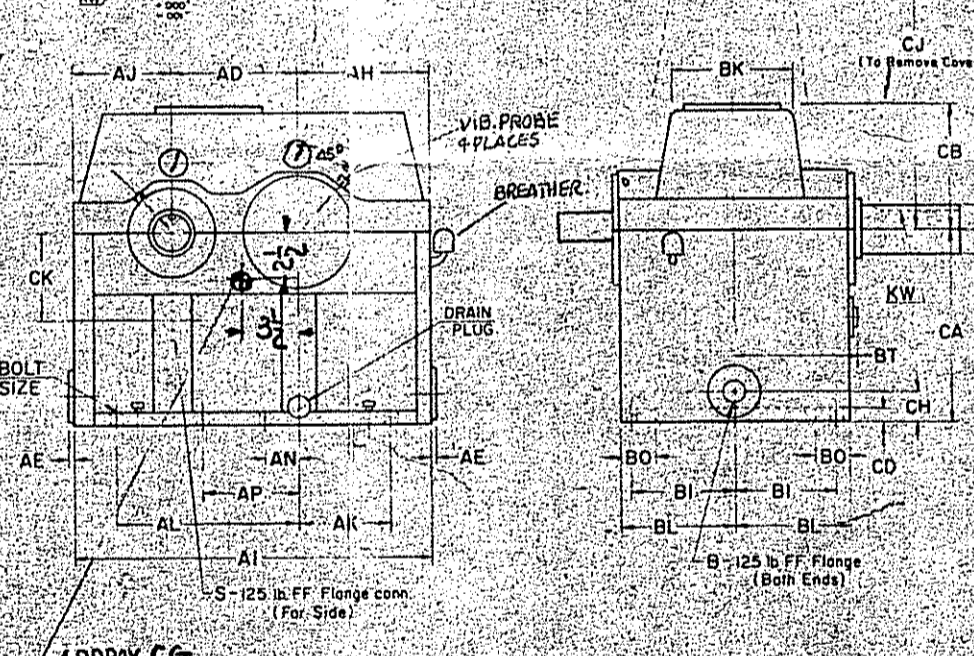
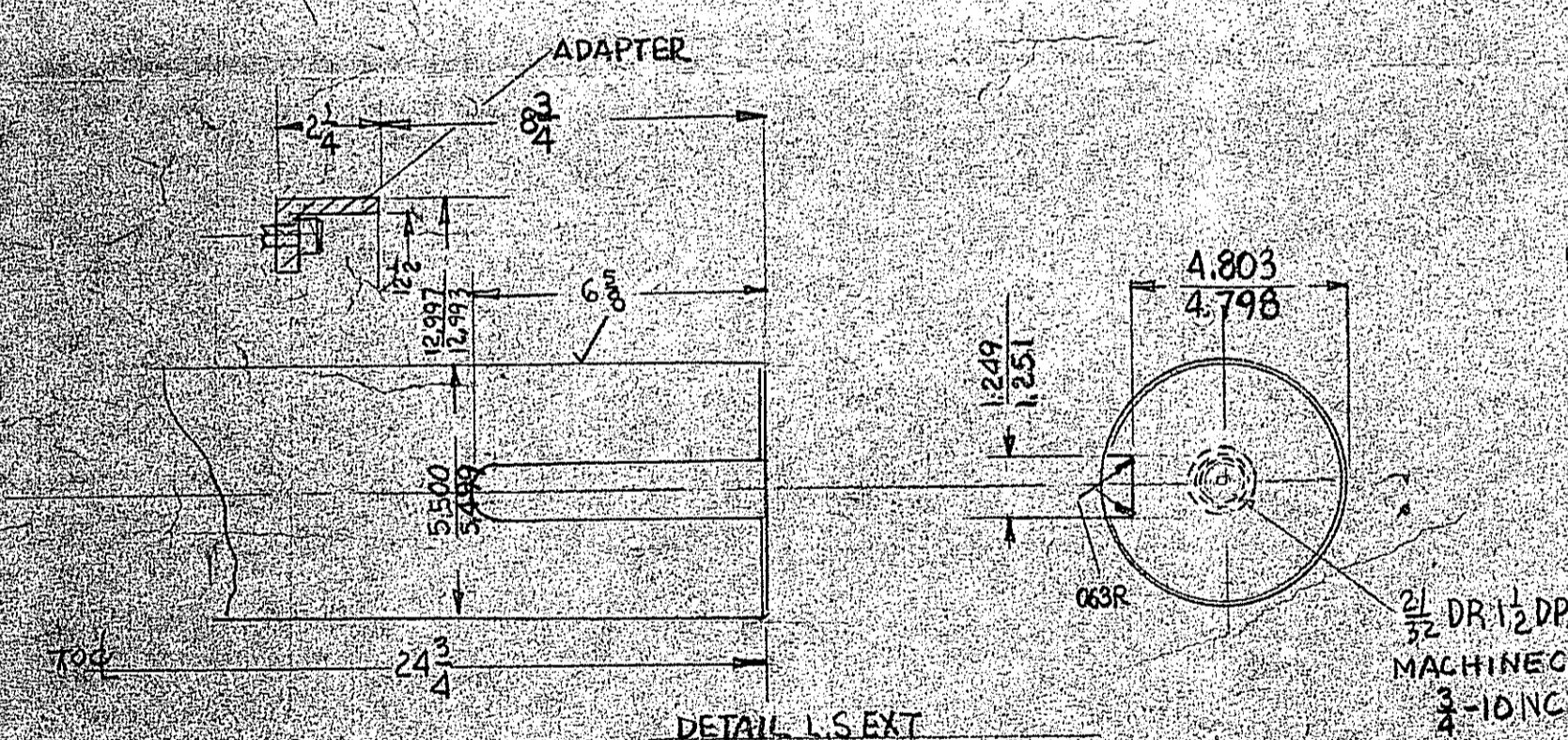
All information contained in or disclosed by this document is considered confidential and proprietary by Western Gear Corporation. All design, manufacturing, use, reproduction, and all sales rights are expressly reserved by and to Western Gear Corporation and communication of this information to others is prohibited without the prior written consent of Western Gear Corporation.



OPTIONAL ACCESSORIES

QTY.	ITEM
4	Thermometer MOELLER #4900-S-4 (0°-100°F) WITH 3/16" D ST. STL WELLS
1	Thermocouple
	Oil Heaters
	Soleplates (leveling screws) Shim pack (1/8" total ca.)
	Alignment dowels Hold-down bolts & washers
1	H.S. Coupling Guard Adapter (steel) SEE DETAIL
1	L.S. Coupling Guard Adapter (steel)
	Low Pressure Switch
	High Temperature Switch
	Bearings (special)
	Auxiliary Pump
4	PROVISIONS FOR MTG. & PROBE 304L-R-18 AM 1 AT EACH BRG

MAINTENANCE WEIGHTS
TOP COVER = 565 LBS
L.S. GEAR SHAFT ASS'Y = 1774 LBS



NYO #034-35400
EB-2994/5

Customer INGERSOLL RAND CO. Cust. P. O. # 744399 WCC # 120-60473
Frame Size 4115 No. Furn. 1 Ratio 1.47837 Serial No. 3022
Assembly No. 1B Service factor 1.3 Material hardness factor 2.15
Estimated efficiency at rated load & speed 98.1% with 150 SSU oil at 100 degrees F. and inlet oil temperature 110 degrees F. (min.) 15 to 25 PSIG.
Oil to unit 22 GPM
Prime mover ELECTRIC MOTOR H.P. 3000 RPM 1795.2
Driven Machine CENTRIFUGAL COMPRESSOR BHP 8587.8 RPM 8587.8
Mass elastic drawing No. M/E C4115-10 API DATA SHEET

L.S. Coupling (turn by cust. WGC (mtd. by cust. WGC Prime mover half bored KW
H.S. Coupling (turn by cust. WGC (mtd. by cust. WGC Driven mach. half bored KW
NOTES: MINIMUM OIL PRESSURE BEFORE STARTING: 15 PSI.
MAXIMUM OPERATING TEMP.: 180 degrees F. BRGS.: 150 degrees F. SUME
Filtration: 25 microns (max.)
Heat rejection from unit 114500 BTU/hr.
Lube pump capacity GPM at PSIG

DIMENSIONS IN INCHES

FRAME SIZE	AA	AD	AE	AH	AI	AJ	AK	AL	AN	AP	B	BA	BG	BI	BK	BL	BN	BO	BT	CA	CB	CD	CH	CJ	CK	H (NPT)	P (NPT)	S (NPT)	2 25 (NPT)	RATIO AND LOWER	RATIOS 225 TO 5062	5062 (NPT)	RATIO AND HIGHER	D	KW	BOLT SIZE	LBS. WT. FAB. CAST IRON
4104	16	48	1	86	104	44	24	1	14	54	44	44	54	58	2	58	9	54	1	34	30	32	1	1	1	1	1	1	1	1	1	1	1	1	1	1	140
4105	18	54	1	98	118	54	30	1	16	64	54	54	64	68	2	64	11	64	1	38	34	36	1	1	1	1	1	1	1	1	1	1	1	1	1	1	220
4106	20	60	1	108	130	60	36	1	18	72	60	60	72	76	2	72	14	72	1	42	38	40	1	1	1	1	1	1	1	1	1	1	1	1	1	1	330
4107	22	66	1	118	142	66	42	1	20	84	66	66	84	88	2	84	18	84	1	46	42	44	1	1	1	1	1	1	1	1	1	1	1	1	1	1	440
4108	24	72	1	128	158	72	48	1	22	96	72	72	96	100	2	96	22	96	1	50	46	48	1	1	1	1	1	1	1	1	1	1	1	1	1	600	
4109	26	78	1	138	170	78	54	1	24	108	78	78	108	112	2	108	26	108	1	54	50	52	1	1	1	1	1	1	1	1	1	1	1	1	1	830	
4110	28	84	1	148	182	84	60	1	26	120	84	84	120	124	2	120	30	120	1	58	54	56	1	1	1	1	1	1	1	1	1	1	1	1	1	1000	
4111	30	90	1	158	196	90	66	1	28	132	90	90	132	136	2	132	34	132	1	62	58	60	1	1	1	1	1	1	1	1	1	1	1	1	1	1200	
4112	32	96	1	168	210	96	72	1	30	144	96	96	144	148	2	144	38	144	1	66	62	64	1	1	1	1	1	1	1	1	1	1	1	1	1	1500	
4113	34	102	1	178	224	102	78	1	32	156	102	102	156	160	2	156	42	156	1	70	66	68	1	1	1	1	1	1	1	1	1	1	1	1	1	1800	
4114	36	108	1	188	238	108	84	1	34	168	108	108	168	172	2	168	46	168	1	74	70	72	1	1	1	1	1	1	1	1	1	1	1	1	1	2200	
4115	38	114	1	198	252	114	90	1	36	180	114	114	180	184	2	180	50	180	1	78	74	76	1	1	1	1	1	1	1	1	1	1	1	1	1	3000	
4116	40	120	1	208	266	120	96	1	38	192	120	120	192	196	2	192	54	192	1	82	78	80	1	1	1	1	1	1	1	1	1	1	1	1	1	4000	
4118	44	132	1	228	294	132	108	1	42	216	132	132	216	220	2	216	62	216	1	90	86	88	1	1	1	1	1	1	1	1	1	1	1	1	1	5000	
4120	48	144	1	248	322	144	120	1	46	240	144	144	240	244	2	240	70	240	1	98	94	96	1	1	1	1	1	1	1	1	1	1	1	1	1	6500	
4122	52	156	1	268	350	156	132	1	50	264	156	156	264	268	2	264	78	264	1	106	102	104	1	1	1	1	1	1	1	1	1	1	1	1	1	8200	
4124	56	168	1	288	378	168	144	1	54	288	168	168	288	292	2	288	86	288	1	114	110	112	1	1	1	1	1	1	1	1	1	1	1	1	1	10000	
4126	60	180	1	308	406	180	156	1	58	312	180	180	312	316	2	312	94	312	1	122	118	120	1	1	1	1	1	1	1	1	1	1	1	1	1	12000	
4128	64	192	1	328	434	192	168	1	62	336	192	192	336	340	2	336	102	336	1	130	126	128	1	1	1	1	1	1	1	1	1	1	1	1	1	15000	
4130	68	204	1	348	462	204	180	1	66	360	204	204	360	364	2	360	110	360	1	138	134	136	1	1	1	1	1	1	1	1	1	1	1	1	1	18000	
4133	72	216	1	368	490	216	192	1	70	384	216	216	384	388	2	384	118	384	1	146	142	144	1	1	1	1	1	1	1	1	1	1	1	1	1	23000	
4136	76	228	1	388	518	228	204	1	74	408	228	228	408	412	2	408	126	408	1	154	150	152	1	1	1	1	1	1	1	1	1	1	1	1	1	28000	
4140	80	240	1	408	546	240	216	1	78	432	240	240	432	436	2	432	134	432	1	162	158	160	1	1	1	1	1	1	1	1	1	1	1	1	1	30000	

VERTICAL (SPLIT LINE TO BASE)
THERMAL EXPANSION PER DEGREE ABOVE AMBIENT = .000151 IN/IN
100° " = .0151 "
HORIZONTAL (BETWEEN CENTERS)
THERMAL EXPANSION PER DEGREE ABOVE AMBIENT = .000098 IN/IN
100° " = .0098 "
H.S. SHAFT (L TO EXT)
THERMAL EXPANSION PER DEGREE ABOVE AMBIENT = .000136 IN/IN
100° " = .0136 "
L.S. SHAFT (L TO EXT)
THERMAL EXPANSION PER DEGREE ABOVE AMBIENT = .000156 IN/IN
100° " = .0156 "

POWER TRANSMISSION PRINTED

SEP 3 1978

DIVISION CALIF.

Certified by WRP date 11-30-70

QTY.	ITEM	REVISION	DATE	BY
1	6-11-71 D	ADDED CG		
1	7-71 D	WAS B.V.D.M. PROBE WAS 302L-18		
1	4-21-71 C	BREATHING MEMBER WAS AGH-CROFT		
1	4-27-71 C	DIM WAS (1) 3/4 TO TOP HOLE WAS B.V.D.		
1	4-12-71 B	REPLT WAS 4150/6141 2 INPT WAS 1750/RAT WAS 1199 OUTP WAS 8575		
1	12-11-70 A	W/BLGTE 4 IN FRM 000 PLEGS		
1	12-11-70 A	RATIO WAS 1.47837		
1	12-11-70 A	INPT RPM WAS 1775 OUTP WAS 8520		

LIMITS AND STANDARDS UNLESS SHOWN OTHERWISE:	SCALE	DATE	CHECKED BY	DATE
MACHINING TOLERANCES:				
ANGLE ± 1°				
DECIMAL ± .010				
FRACTIONAL ± 1/32				
RADII ". ± .032				
FINISH 125 R.M.S.				
CHAMFER "C" 1/16 X 45°				
GRINDING ALLOW. .015				
CAST TOLERANCES:				
± 1/32 PER FOOT				
1/4 CORNER RADII				
1/4 FILLET RADII				

WESTERN GEAR CORPORATION	OUTLINE DIMENSIONS
4115	4115
DRAWN BY <u>WRR</u>	DATE <u>11-30-70</u>
CHECKED BY <u>WRP</u>	DATE <u>11-30-70</u>
SIZE <u>D</u>	SCALE <u>1:1</u>
EST. ROOM WT. <u> </u>	EST. FINISHED WT. <u> </u>
BY <u>D</u>	DATE <u>11-30-70</u>