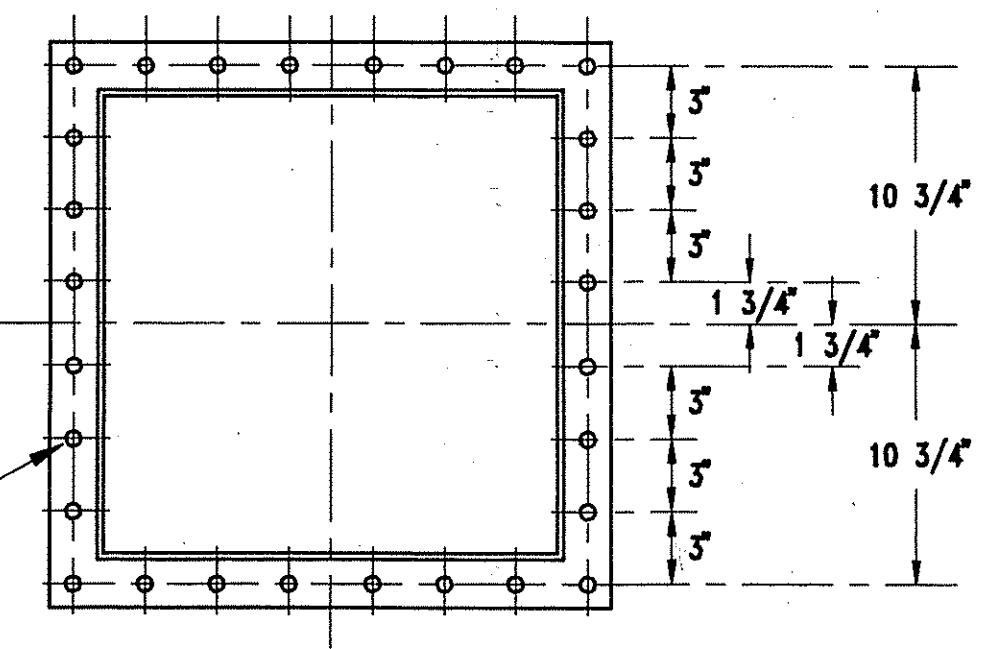


CONVEYOR: 8-M-304  
 8-M-306  
 8-M-308  
 F.A. NO. 812-290  
 812-291  
 812-292  
 P.O. NO. X72421  
 PADDLE RPM. 61  
 MOTOR HP. 7 1/2

P.O.# X72421	TOTAL WEIGHTS INCLUDING MOTOR			SPEED PROBE PICKUP			
CONVEYOR	EMPTY WT.	OPERATING WT.	SHIPPING WT.	TAG N.O.	F.A. N.O.	A	B
8-M-304	2480	3824	2500	405-SSL-29859	812-290	8'-4 1/2"	3'-5 7/8"
8-M-306	2086	2786	2135	405-SSL-29860	812-291	3'-6 7/8"	1'-5 9/16"
8-M-308	2269	3269	2320	405-SSL-29861	812-292	5'-9 3/4"	3'-7"

NOTES:  
 1. ALL INTERNAL TROUGH WELDS TO BE GROUND TO CEMA III FINISH.  
 2. PAINT - ALL EXTERNAL CARBON STEEL SURFACES TO BE SANDBLASTED TO A COMMERCIAL FINISH AND IMMEDIATELY FOLLOWED BY ONE COAT OF PPG EPOXY PRIMER, 2.0 MILS THICKNESS, FOLLOWED BY ONE COAT OF PPG EPOXY #97-56, 2.0 MILS THICK.

5/8" DIA. THRU (28) PLC'S  
 DRILL PATTERN SAME ON ALL (4) SIDES.



ITEM	REQ'D	MAT'L	DRAWING NO.	DESCRIPTION
101	1	316 L		CONVEYOR 8-M-304, TWIN SHAFT PADDLE CONVEYOR
102	1	316 L		CONVEYOR 8-M-306, TWIN SHAFT PADDLE CONVEYOR
103	1	316 L		CONVEYOR 8-M-308, TWIN SHAFT PADDLE CONVEYOR
104	3	A-36		SYNCHRONIZING GEAR BOX
105	6			BEARINGS, FLG. MOUNTED, HUB CITY FC350 x 2 11/16"
106	6			BEARINGS, FLG. MOUNTED, HUB CITY EFC4 x 2 15/16"
107	6			BEARINGS, FLG. MOUNTED, BROWNING SFB1000 x 2 15/16"
108	6			PACKING BOX AND GLAND
109	3			SHEAR PIN SPROCKET, BROWNING S80R45 WITH SHEAR PIN HUB & 7/32" SHEAR PIN NECK DIA.
110	3			DRIVE SPROCKET, BROWNING NO. 80B45 BORED FOR 2.125" DIA. SHAFT
111	10 ft			1" PITCH, J80 RIVETED ROLLER CHAIN
112	3			GEAR REDUCER & MOTOR, EURODRIVE MODEL R83-28.77:1 WITH LP ADAPTOR AND 7 1/2 HP 1750 RPM EXPLOSION PROOF MOTOR, CLASS I GROUP D CLASS II GROUP F&G. MOTOR POSITION BB. MOTOR TO BE U.S. MOTORS, CORRO - DUTY ENERGY EFFICIENT, PER CIBA-GEIGY MOTOR SPEC 109.03.37 REV 8
113	3	A-36		CHAIN DRIVE GUARD, OIL BATH TYPE
114	3			SPEED PICKUP PROBE INCL. GEAR, DYNALCO #M-139
115	1			1 1/2" HALF COUPLING
116	3			3/4" COUPLINGS FOR CHAIN GUARD OIL BATH

TOLERANCE UNLESS OTHERWISE NOTED		DATE	BY	DESCRIPTION	BY	DATE
FABRICATIONS	MACHINED SURFACES	05-09-90	A WESTERBERG	GAULD		
UNDER 6"-0"	2 PLACES ±.010"			#1, 2, & 3 NAPITSA PADDLE CONVEYORS (8-M-304, 306, 308)		
± 1/16"	3 PLACES ±.003"					
OVER 6"-0"	FRACTIONS ± 1/64"					