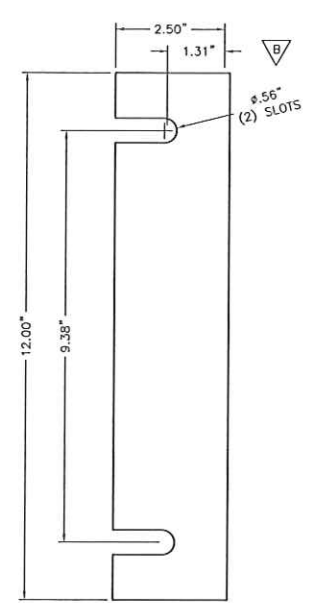
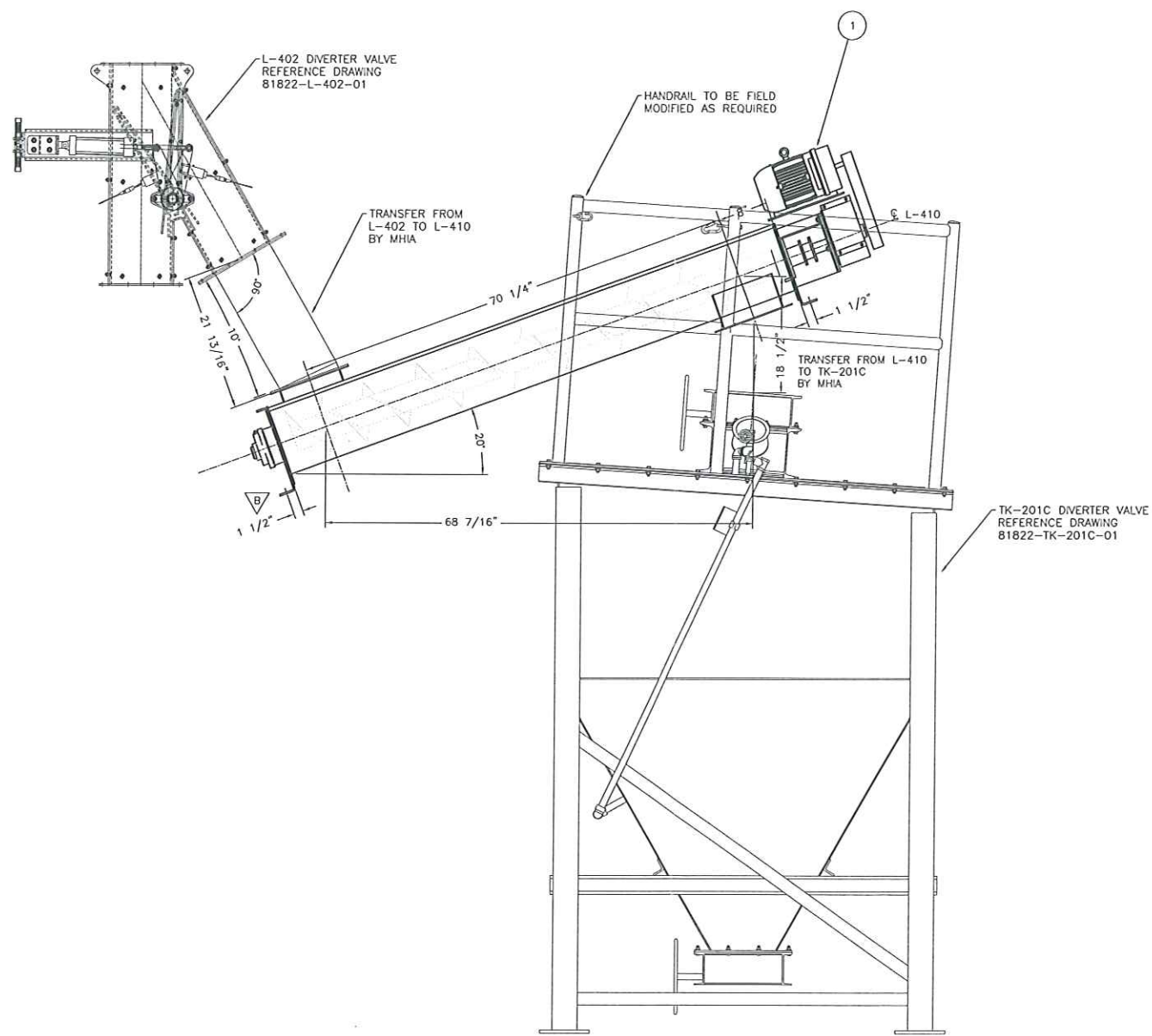


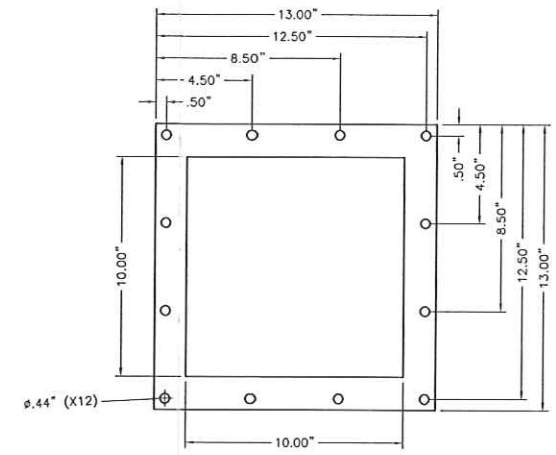
EQUIPMENT LIST				
ITEM	QTY	DESCRIPTION	DRAWING	WEIGHT
1	1	L-410 FINISHER1 CYCLONE SCREW FEEDER	L-410	-
			TOTAL WEIGHT	-



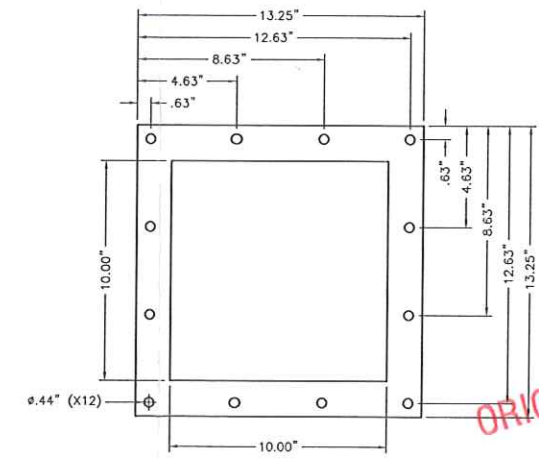
CONVEYOR SUPPORT CONNECTION
1/2" = 1"



L-410 EMERGENCY COAL SCREW CONVEYOR
SCALE: 1" = 1' 0"
(1) REQ'D



L-410 INLET FLANGE
1/4" = 1"



L-410 OUTLET FLANGE
1/4" = 1"

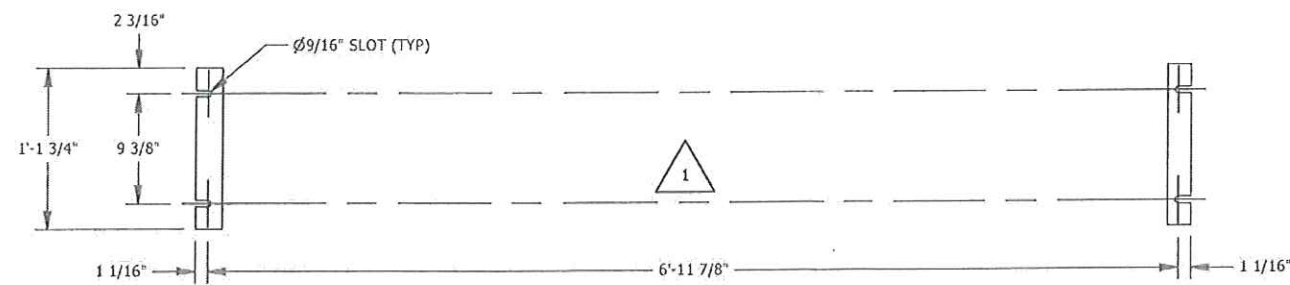
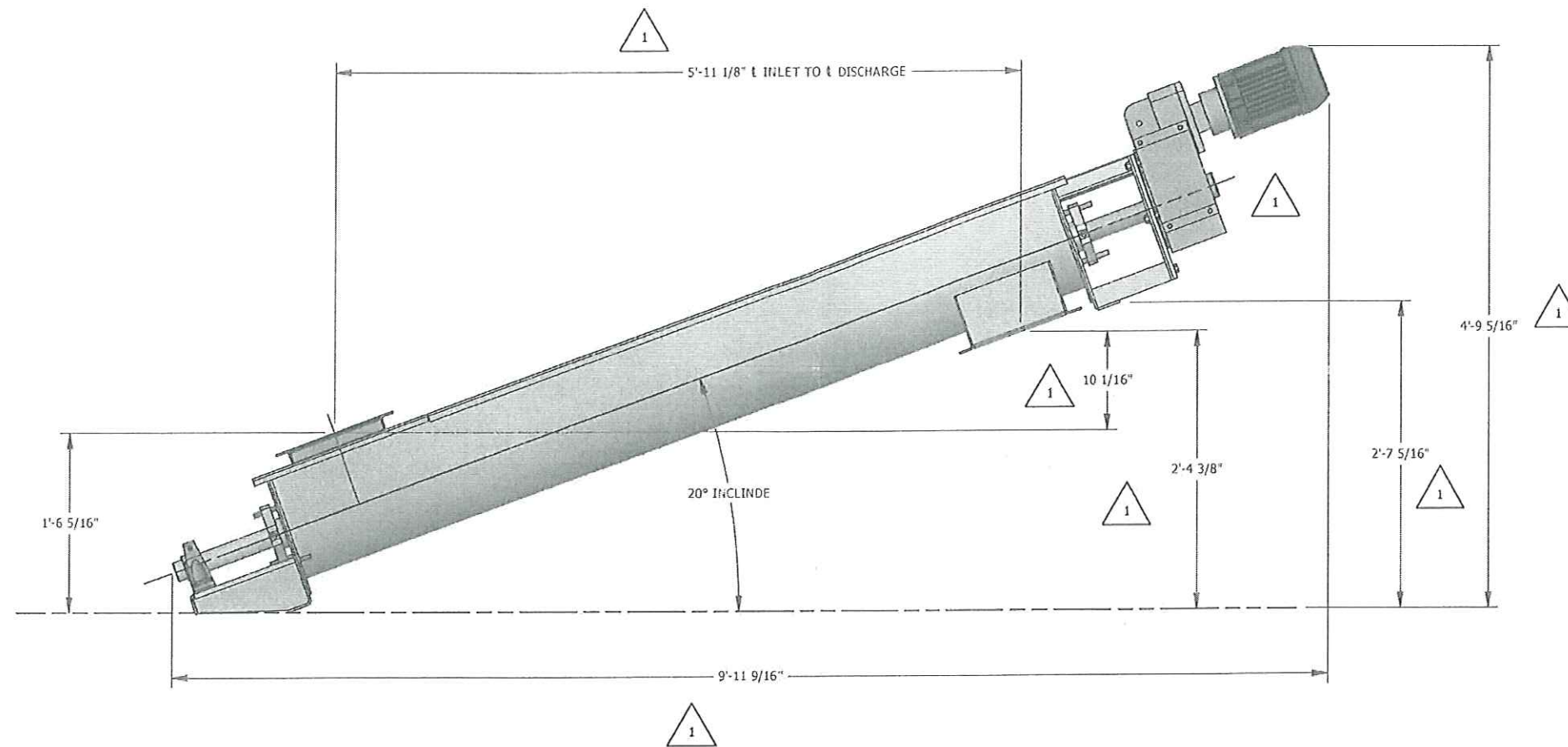
ORIGINAL DOCUMENT
NOV 12 2013

ZONE	REV	ECN	DESCRIPTION	DATE	BY
-	B	-	CORRECTED MOUNTING PAD DIMS	9-23-2013	AMP
-	A	-	GENERAL NOTE AND MOUNTING	8-20-2013	JTL



DO NOT SCALE DRAWING		CAD FILE NUMBER 81822-L-410-01 REV B		JOB NO. 81822	
THIS PRINT IS THE PROPERTY OF INNOVATIVE PROCESSING SOLUTIONS AND IS LOANED TO YOU SUBJECT TO RETURN OR REPAIR. UNLESS OTHERWISE AGREED TO IN WRITING BY INNOVATIVE PROCESSING SOLUTIONS, ITS CONTENTS ARE CONFIDENTIAL AND MUST NOT BE COPIED OR SUBMITTED TO ANY THIRD PARTY FOR USE OR REPRODUCTION.					
UNLESS OTHERWISE SPECIFIED, DIMENSIONS ARE IN INCHES AND TOLERANCES ARE:		DATE 9/23/13		SCALE NOTED	
ANGLES: ± 1°		DWG NO. 81822-L-410-01		SHEET 1 OF 1	
FRACTIONS: 1/16"		DESIGNED BY JTL		CHECKED BY JTL	
X: ± .02		DRAWN BY -		REV B	
XX: ± .01		SURFACE ROUGHNESS 250			
XXX: ± .005					

106993



#106993

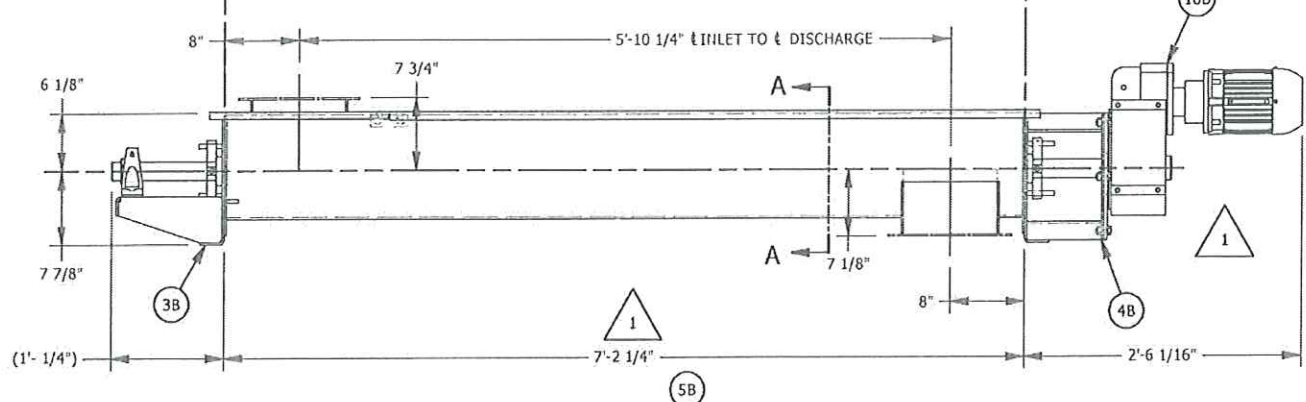
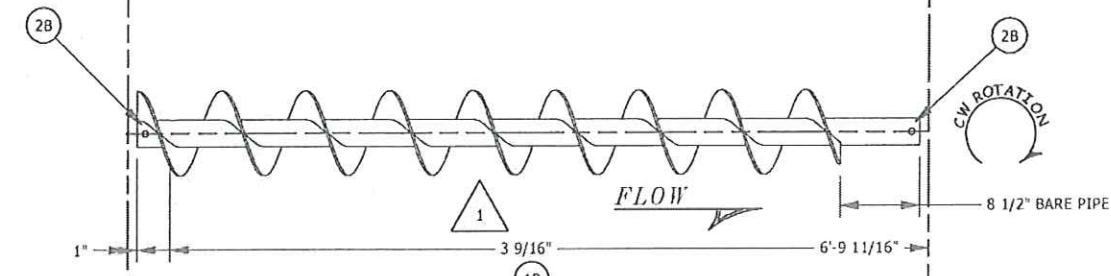
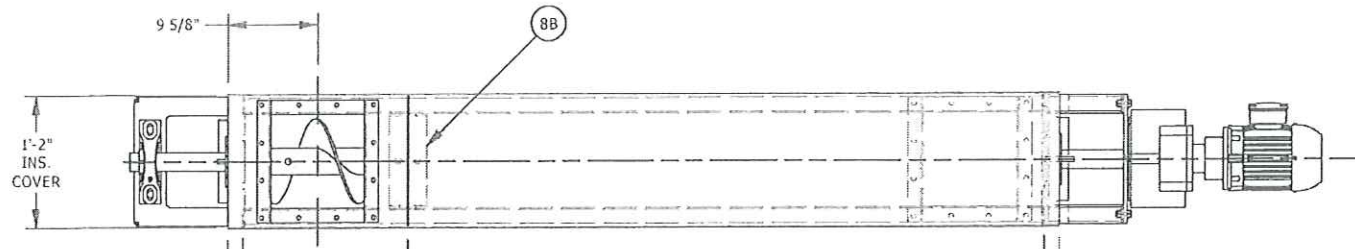
FULL RELEASE 10/07/13

REV	DATE	DESIGNER	DESCRIPTION
1	09/30/13	LAM	REVISED PER CUSTOMER COMMENTS
			DESCRIPTION
			REVISIONS

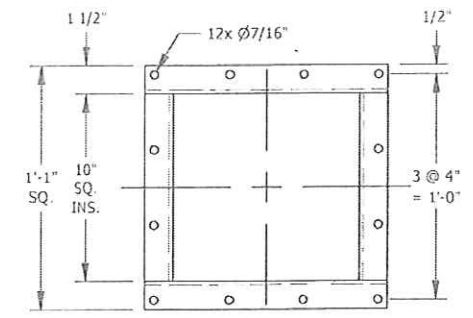
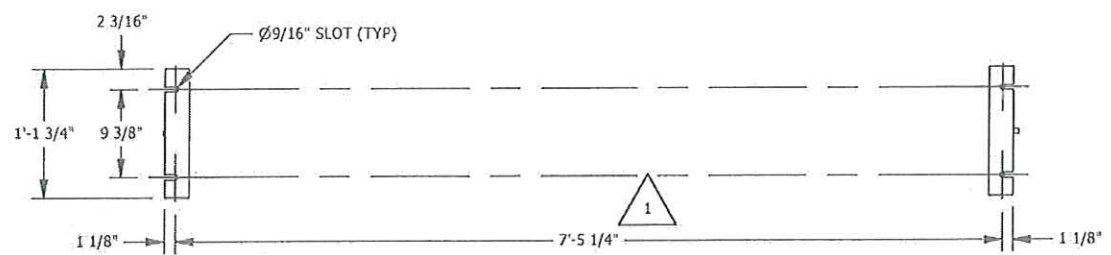
TAG#: L-410	
WEIGHT: 750 LBS.	
CUSTOMER	SHIP TO:
INNOVATIVE PROCESSING SOLUTION 129 FRANKLIN STREET AURORA, IN 47001	STEDMAN 108 INDIANA AVENUE AURORA, IN 47001

	KWS MANUFACTURING CO., LTD. 3041 CONVEYOR DRIVE BURLESON, TX 76028 Phone: (817) 295-2247 Fax: (817) 447-8528 Website: www.kwsnfg.com Email: sales@kwsnfg.com			
	9" DIA. INCLINED SCREW CONVEYOR GENERAL ARRANGEMENT			
DESIGNER LAM	P.M. APH	CHECKED BY am	CREATION DATE 9/8/2013	DRAWING NO. 0088171-01

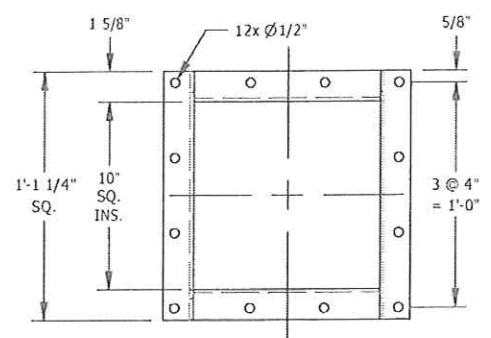
NOTE: THIS DRAWING AND ALL DESIGNS, DETAILS, INVENTIONS AND DEVELOPMENTS ARE CONFIDENTIAL AND THE EXCLUSIVE PROPERTY OF KWS MANUFACTURING CO., LTD. ANY REUSE, REPRODUCTION, COPIED, LOANED OR USED WITHOUT PERMISSION, IT MUST BE RETURNED OR DESTROYED AND SUBJECT TO THE ABOVE CONDITIONS AND EXCEPT ON WORK AUTHORIZED BY KWS MANUFACTURING CO., LTD.



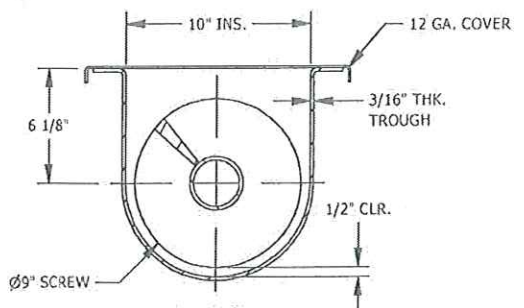
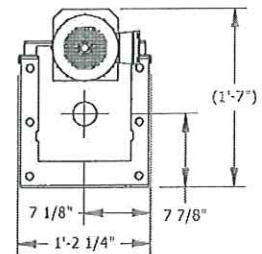
CONVEYOR INSTALLS @ 20° INCLINE



INLET FLANGE PATTERN



DISCHARGE FLANGE PATTERN



SECTION A-A

BILL OF MATERIALS				
ITEM	QTY	*	DESCRIPTION	REV
B	ONE		9" DIA. X 7'-2 1/4" LG. INCLINED SCREW CONVEYOR TO CONVEY 64.37 CFH OF 46.6 PCF UNIFORMLY FED QUENCHED COAL AT APPROXIMATELY 30% TROUGH LOADING. SHOP ASSEMBLED AND CONSISTING OF:	1
1B	1		SPL, 9" DIA. X 1/4" THK. (304SS) X 9" PITCH X 7'-1/4" LG. RIGHT HAND, SECTIONAL SCREW, SKIP WELDED TO A 2 1/2" SCH 40 PIPE (304SS). BUSHED AND DRILLED BOTH ENDS FOR A 2" DIA. 2-BOLT COUPLING. DISCHARGE END TO HAVE 8 1/2" OF BARE PIPE.	1
2B	4		C82-212-HT, 5/8" DIA. X 3 5/8" LG. (GRADE 5)(ZINC-PLATED CARBON STEEL) COUPLING BOLT WITH LOCK NUT.	
3B	1		TEPO92U-BB-WF-SGSS, 9" DIA. X 2" DIA. X 1/4" THK. (C.S.) PEDESTAL U-TROUGH END WITH FOOT, STUDDED FOR SEAL AND FITTED WITH:	
	2		SGS2-G, 2" DIA. ZINC-PLATED CARBON STEEL SPLIT GLAND SEAL WITH GRAPHITE PACKING	
	1		EBP2-BB, 2" DIA. BALL BEARING 2-BOLT PILLOW BLOCK.	
	1		PES2, 2" DIA. X 18" LG. (C-1045) 2-BOLT PEDESTAL END SHAFT.	
	1		2" DIA. EXCLUDER RING (PN 0200-11983 SSW)	
4B	1		TEBH92U-WF-SGSS, 9" DIA. X 2" DIA. X 1/4" THK. (C.S.) U-TROUGH END BULKHEAD WITH FOOT, FITTED WITH:	1
	1		SGS2-G, 2" DIA. ZINC-PLATED CARBON STEEL SPLIT GLAND SEAL WITH GRAPHITE PACKING	1
	1		QDSMW68B14-2-2B-BH, 2" DIA. (C-1045) 2-BOLT DRIVE SHAFT.	1
	1		TEBHDP9MW68-A1, 9" BULKHEAD DRIVE PLATE FOR A QUANTIS MW68 REDUCER.	
5B	1		TUF9316, 9" DIA. X 3/16" THK. (C.S.) X 7'-2 1/4" LG. FORMED FLANGE U-TROUGH WITH 1/4" THK. (C.S.) PLATE END FLANGES.	1
	1		DSP9316UP-T316, 10" INS. SQ. X 3/16" THK. (C.S.) DISCHARGE SPOUT.	
6B	1		COV9GAU-FL, 9" X 10 GA. (C.S.) X 1'-7 1/4" LG. FLANGED COVER FOR U-TROUGH, BOLTED ON ALL FOUR SIDES ON 6" CENTERS, FITTED WITH:	
	1		ISF9, 10" SQ. INSIDE X 3/16" THK. (C.S.) INLET.	
7B	1		COV9GAU-FL, 9" X 12GA. (C.S.) X 5'-10 1/8" LG. FLANGED COVER FOR U-TROUGH BOLTED ON APPROX. 12" CENTERS.	1
8B	1		BB9-R, 9" X 1/4" THK (C.S.) X 4" WIDE BATTEN BAR, WITH (2) 3/8"-16 UNC RIV-NUT.	
9B	LOT		3/16" THK. FDA RED SILICONE SPONGE COVER AND FLANGE CONNECTION GASKET, AND ZINC PLATED CARBON STEEL ASSEMBLY BOLTS.	
10B	1		2HP, 24 RPM, CLASS II SCREW CONVEYOR DRIVE MOUNTED @ 12 O'CLOCK BY KWS CONSISTING OF:	1
	1		(1) DODGE QUANTIS MW683CN140TC CLASS II REDUCER WITH C-FACE ADAPTOR 140TC, RATIO 72.54:1, POSITION A1, 1.5" DIA HOLLOW BORE, B-14 MOUNT, FIXING ELEMENT, SHAFT KEYS AND LESS 2" DIA. DRIVE SHAFT.	1
	1		(1) WEG, 2 HP, 1750 RPM 3/60/230-460V C-FACE 140-TC MOTOR IEEB41.	1

REFERENCE DRAWING 0088171-GN FOR GENERAL NOTES

TAG#: L-410
 WEIGHT: 750 LBS.
 CUSTOMER
 INNOVATIVE PROCESSING SOLUTION
 129 FRANKLIN STREET
 AURORA, IN 47001

SHIP TO:
 STEDMAN
 108 INDIANA AVENUE
 AURORA, IN 47001

KWS Design Engineering Manufacturing

KWS MANUFACTURING CO., LTD.
 3041 CONVEYOR DRIVE
 BURLESON, TX 76028
 Phone: (817) 295-2247
 Fax: (817) 447-8528
 Website: www.kwsnfg.com
 Email: sales@kwsnfg.com

9" DIA. INCLINED SCREW CONVEYOR				
DESIGNER LAM	P.M. APM	CHECKED BY <i>am</i>	CREATION DATE 9/8/2013	DRAWING NO. 0088171-B

FULL RELEASE 10/07/13

REV	DATE	DESIGNER	DESCRIPTION
1	09/30/13	LAM	REVISED PER CUSTOMER COMMENTS

NOTE: THIS DRAWING AND ALL DESIGN, DETAIL, INVENTIONS AND/OR COMPONENTS CO-OWNED ARE CONFIDENTIAL AND THE EXCLUSIVE PROPERTY OF KWS MANUFACTURING CO., LTD. WHICH RESERVES ALL PATENT AND OTHER RIGHTS. IT IS NOT TO BE PRINTED, PHOTOGRAPHED, COPIED, LAMINATED OR USED WITHOUT PERMISSION. IT MUST BE RETURNED ON REQUEST AND USED SUBJECT TO THE ABOVE CONDITIONS AND ONLY ON WORK AUTHORIZED BY KWS MANUFACTURING CO., LTD.